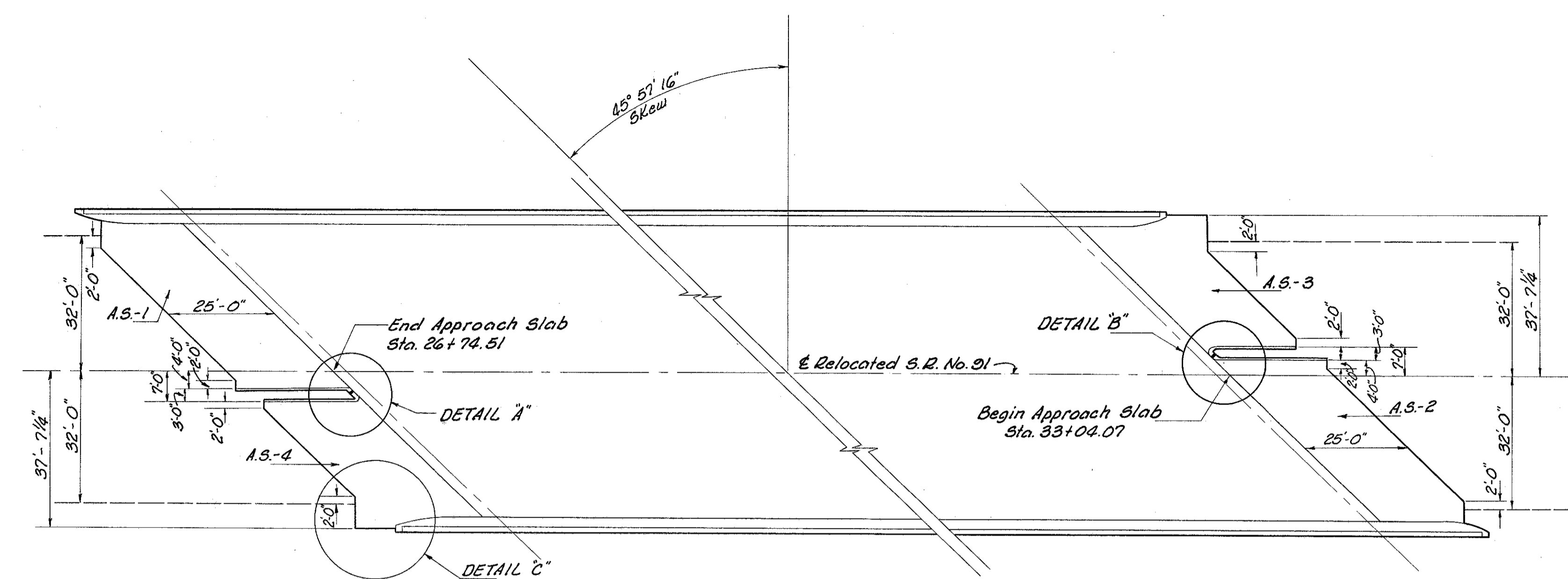
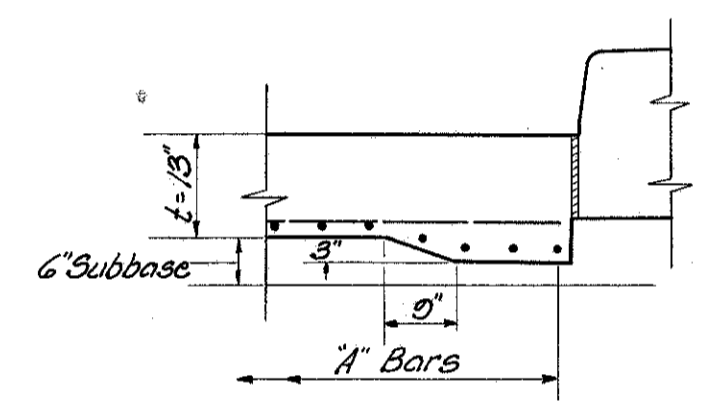


LAKE COUNTY  
LAK-1-2.16

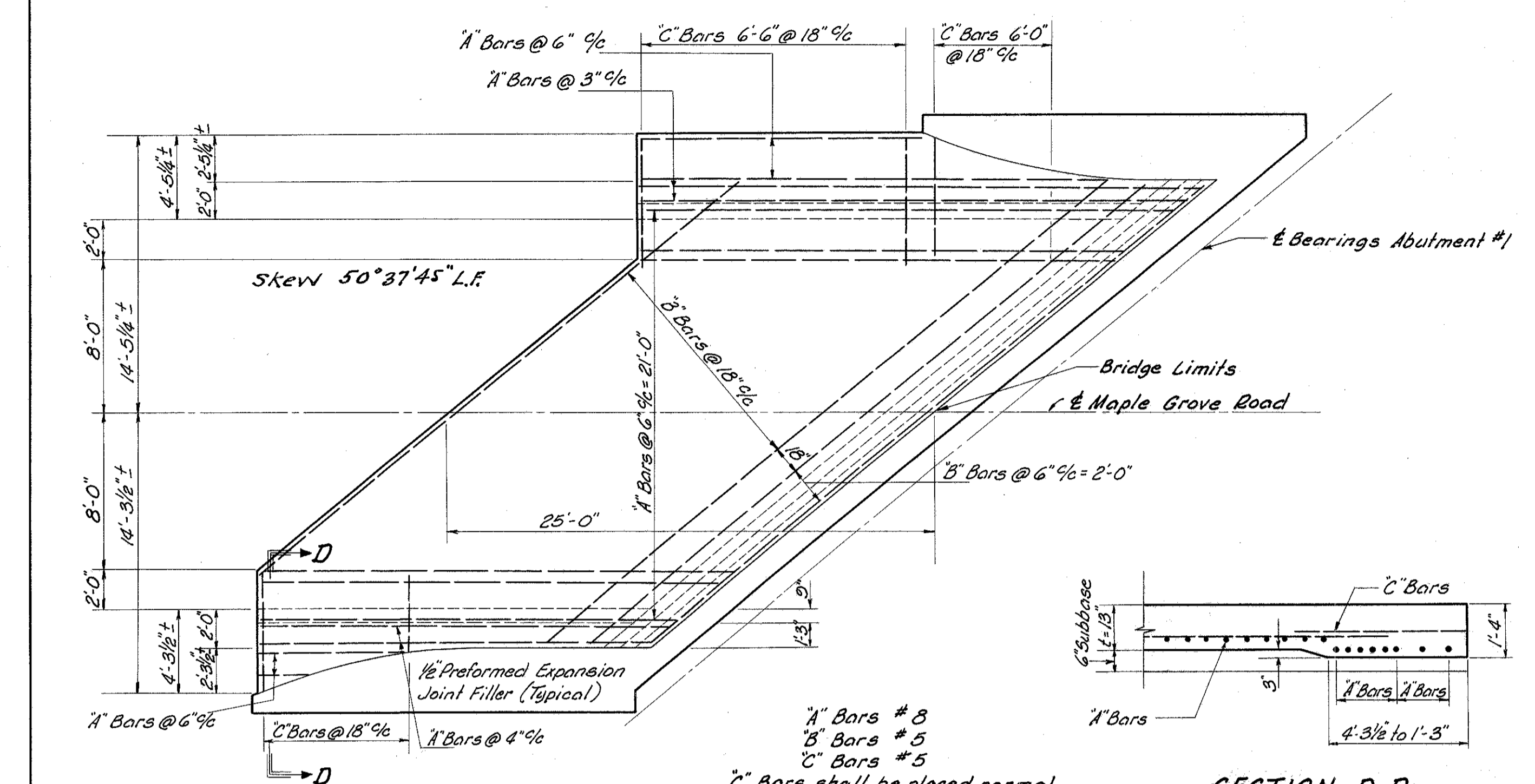


APPROACH SLAB LAYOUT PLAN  
STATE ROUTE NO. 91

Note: A Bars #8  
B Bars #5  
C Bars #5

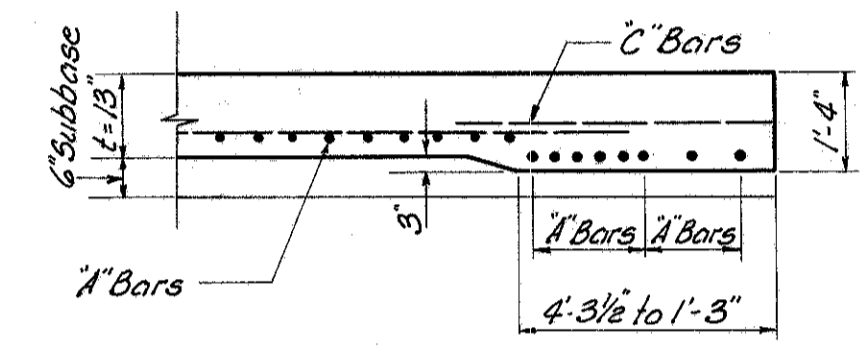


SECTION A-A

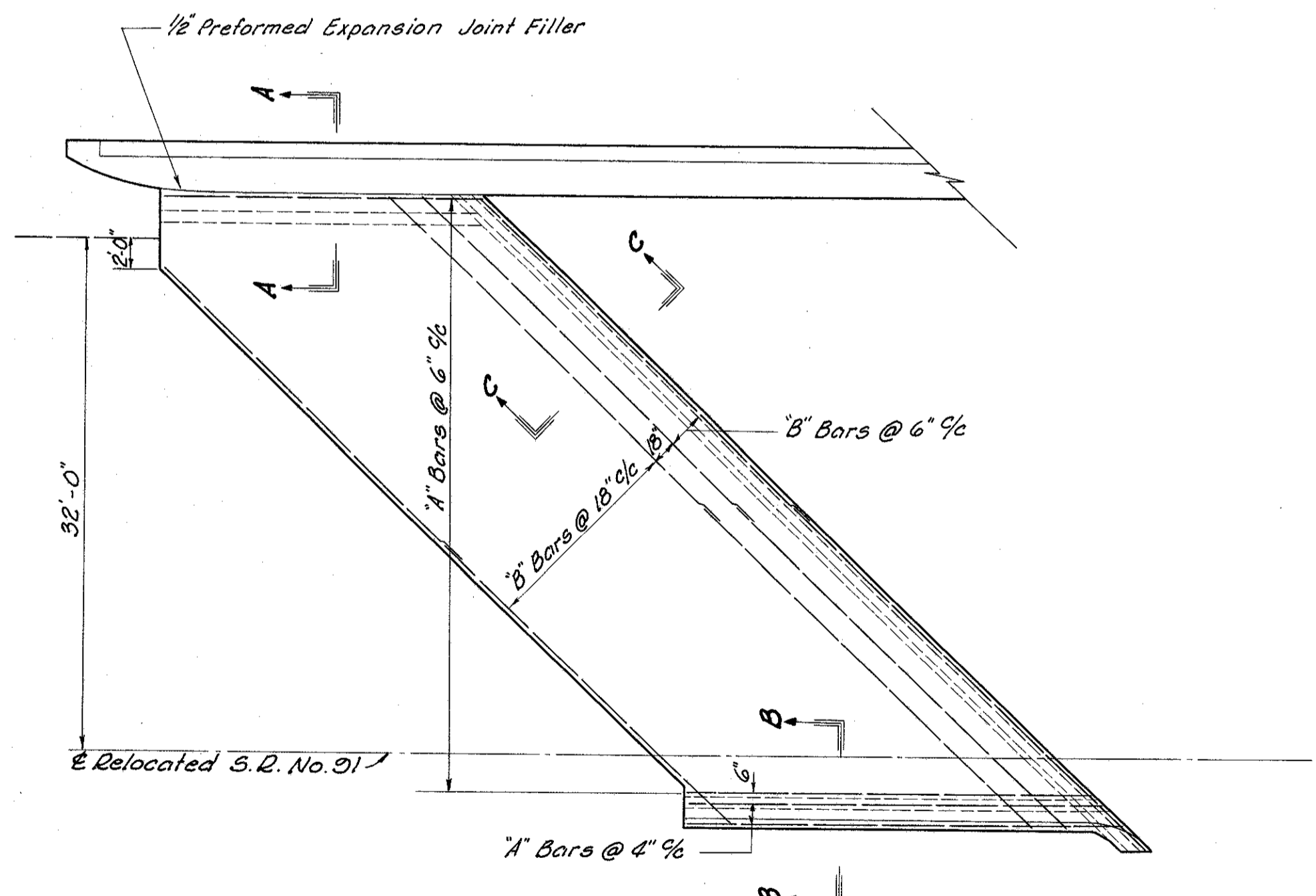


APPROACH SLAB DETAIL  
MAPLE GROVE ROAD

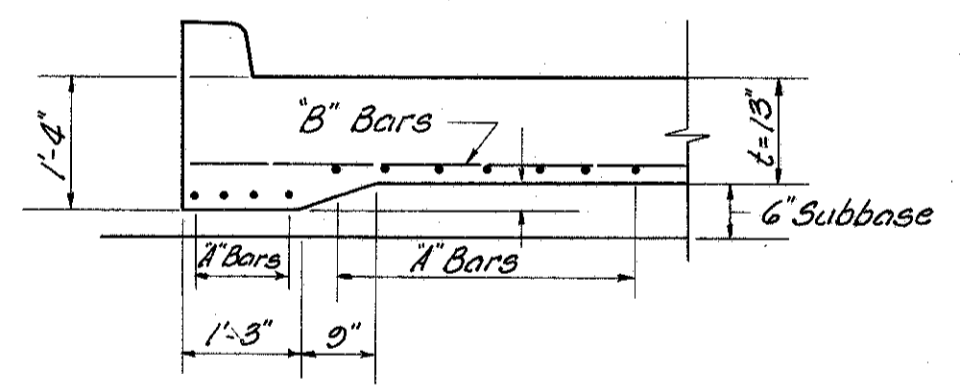
A Bars #8  
B Bars #5  
C Bars #5  
C Bars shall be placed normal to centerline of roadway



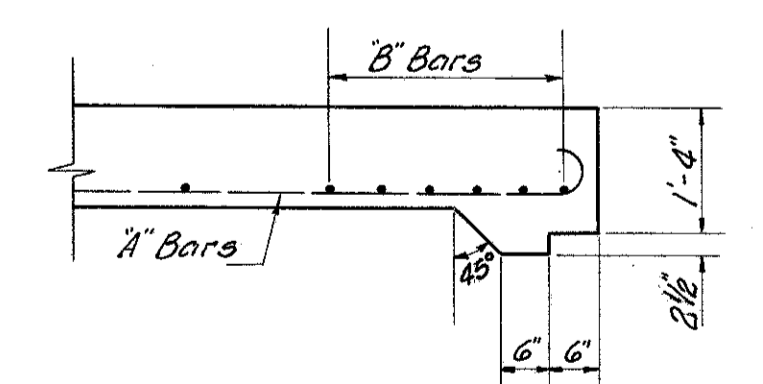
SECTION D-D



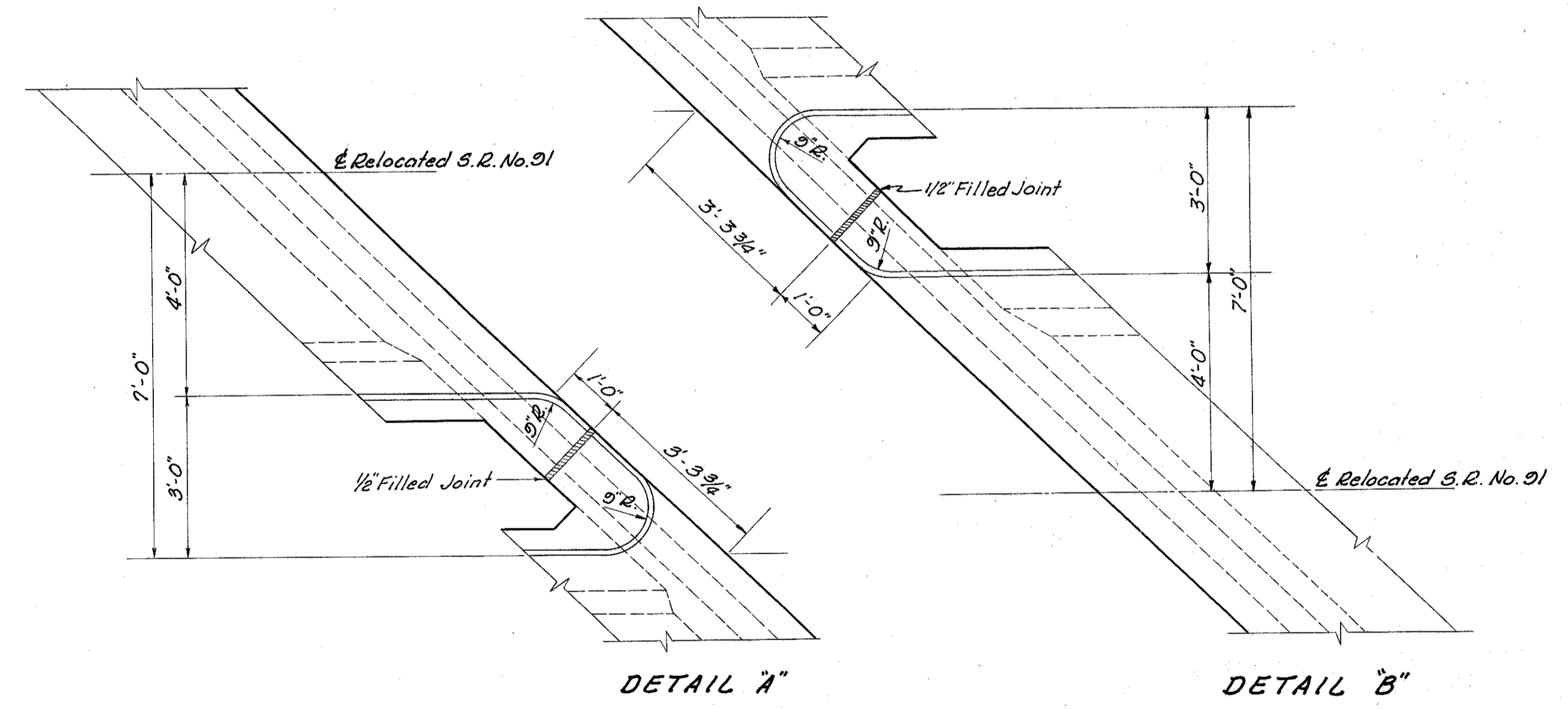
APPROACH SLAB A.S.-1  
A.S.-2, A.S.-3 & A.S.-4 Similar



SECTION B-B

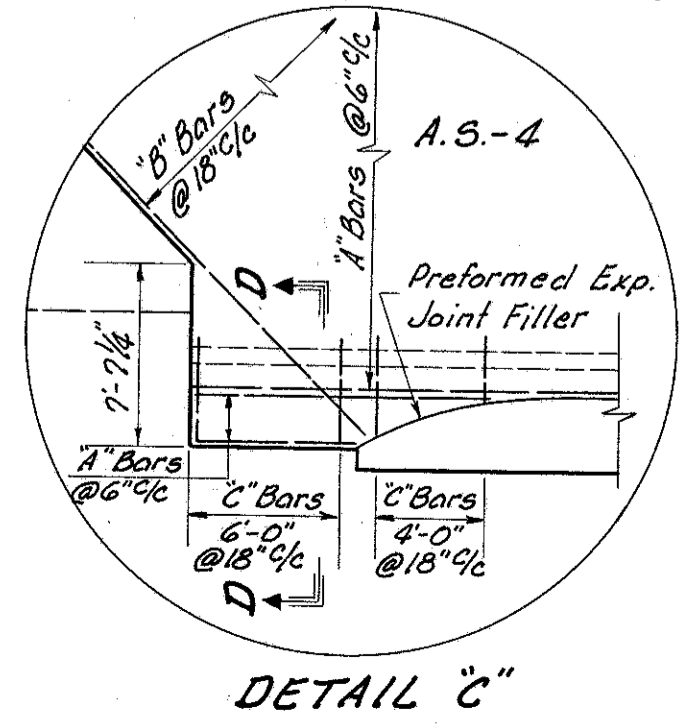


SECTION C-C

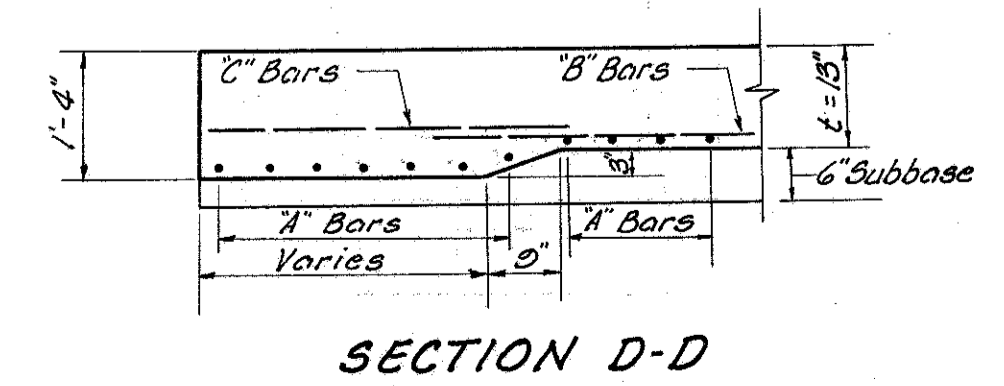


DETAIL A

DETAIL B



DETAIL C



SECTION D-D

Note:  
Refer to Standard Drawing AS-1-54 for Typical Sections and Details of Approach Slabs. Standards to be modified as necessary to accommodate Reinforcing Plan as shown. Concrete to be Class C. Preformed Expansion Joint Filler shall be included in the bid price for Item 1-7 Reinforced Concrete Approach Slab.

MICHAEL BAKER, JR., CONSULTING ENGINEERS  
ROCHESTER, PENNSYLVANIA

STATE OF OHIO  
DEPARTMENT OF HIGHWAYS  
STATE HIGHWAY NO. 1  
C-43

TYPICAL APPROACH SLAB DETAILS

Designed	Drawn	Traced	Checked	Reviewed	Date	Revised
G.W.	P.W.M.	A.L.H.	B.P.			