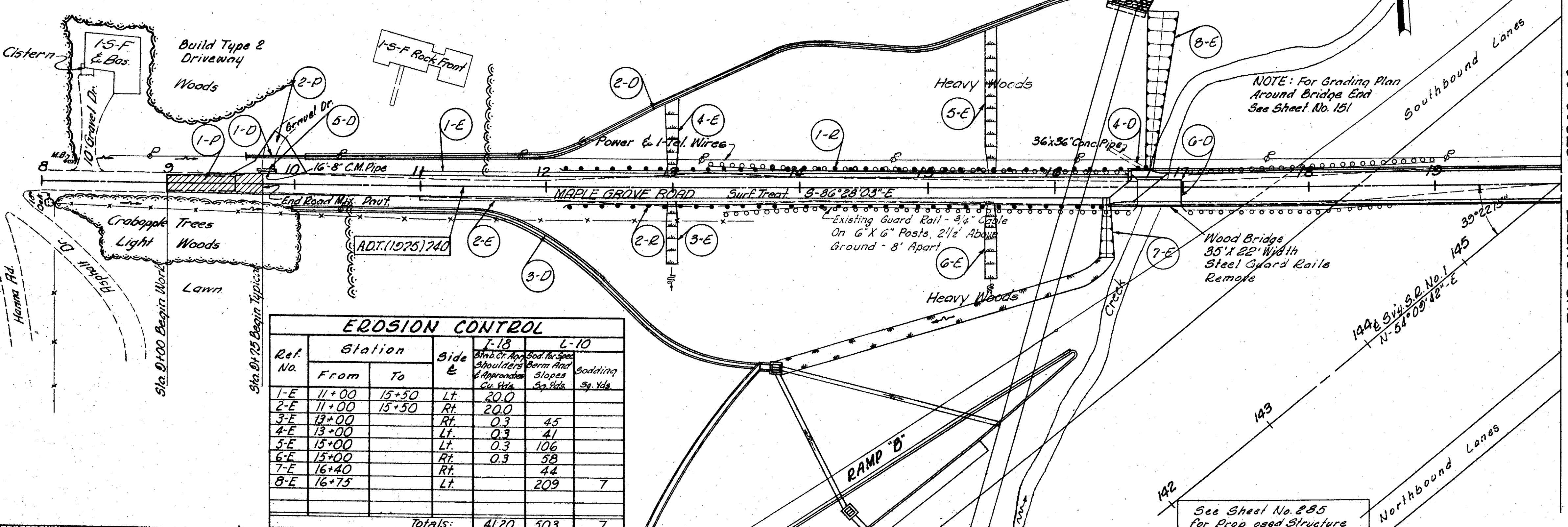


LAKE COUNTY
LAK-I-2.16

TYPICAL SECTION OF
EXISTING MAPLE GROVE ROAD
STA. 9+00

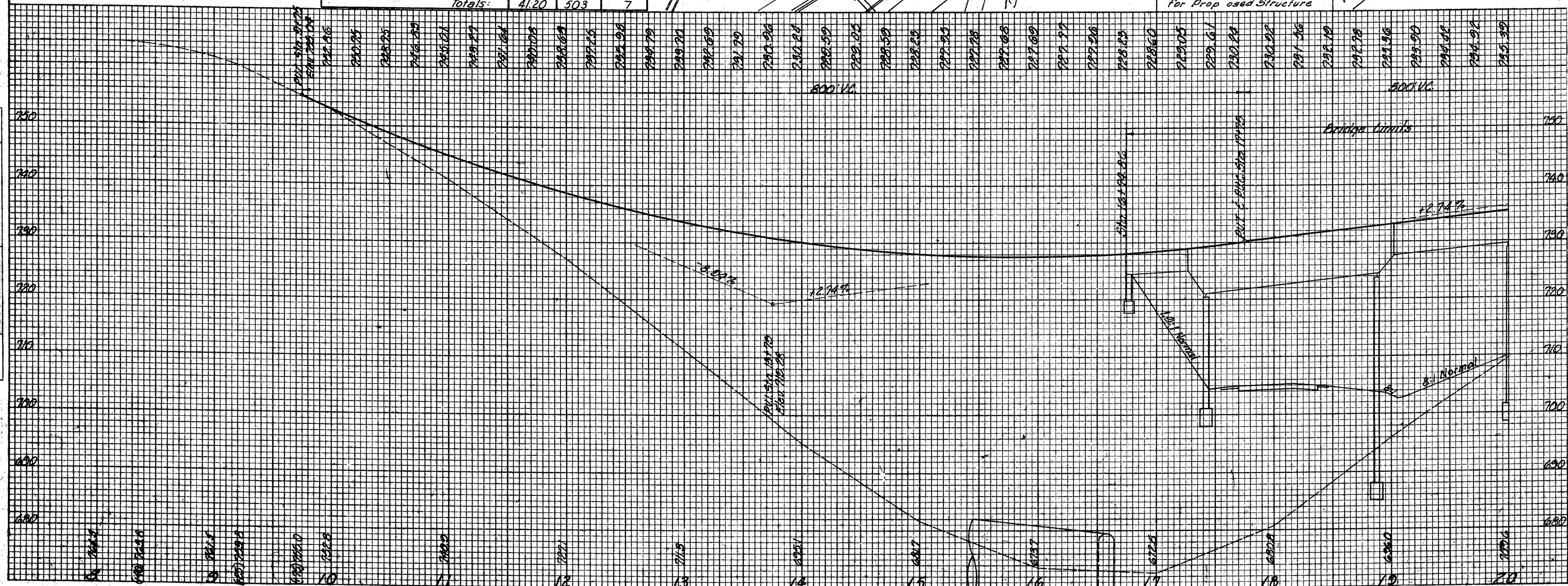


Ref. No.	Station		Side	1-18		L-10	
	From	To		Shoulders & Approaches	Berm And Slopes	Sodding	Sq. Yds.
1-E	11+00	15+50	Lt.	20.0			
2-E	11+00	15+50	Rt.	20.0			
3-F	13+00			0.3	4.5		
4-E	13+00		Lt.	0.3	4.1		
5-E	15+00		Lt.	0.3	10.6		
6-E	15+00		Rt.	0.3	5.8		
7-E	16+40		Rt.		4.4		
8-E	16+75		Lt.		20.9		7
Totals:				41.20	50.3	7	

Ref. No.	Station		Side	1-15	
	From	To		Grd. Rail	Dist. 2-A
1-R	12+14.26	16+76.76	Lt.	462.5	
2-R	12+17.23	16+42.23	Rt.	425.0	
Totals				887.5	

Ref. No.	Station		Side	7-35		8-10	
	From	To		Asphaltic Conc. Surf. Course	Asph. Base Course		
1-P	9+00	9+75	Rt.	3.24	23		
2-P	9+80		Lt.				
Totals				3.24	23		

Ref. No.	Station	Side	1-18		L-10		
			Removal	Structure	Sq. Yds.	Sq. Yds.	
1-18	11+00	Lt.	665		222		
1-18	13+00	Rt.	407		136		
1-18	15+00	Lt.					
1-18	15+00	Rt.					
1-18	16+40	Rt.					
1-18	16+75	Lt.					
1-18	16+75	Rt.					
Totals				1072	358		



This sheet supersedes sheet No. 239 4-6-60 P.E.C.

MICHAEL BAKER, JR., CONSULTING ENGINEERS
ROCHESTER, PENNSYLVANIA

STATE OF OHIO
DEPARTMENT OF HIGHWAYS
STATE HIGHWAY NO. 1
C-43

MAPLE GROVE RD. PLAN & PROFILE
STA. 8+00 TO STA. 20+00

Designed	Drawn	Traced	Checked	Reviewed Date	Revised
B.P.	H.G.	A.L.H.	R.E.F.		