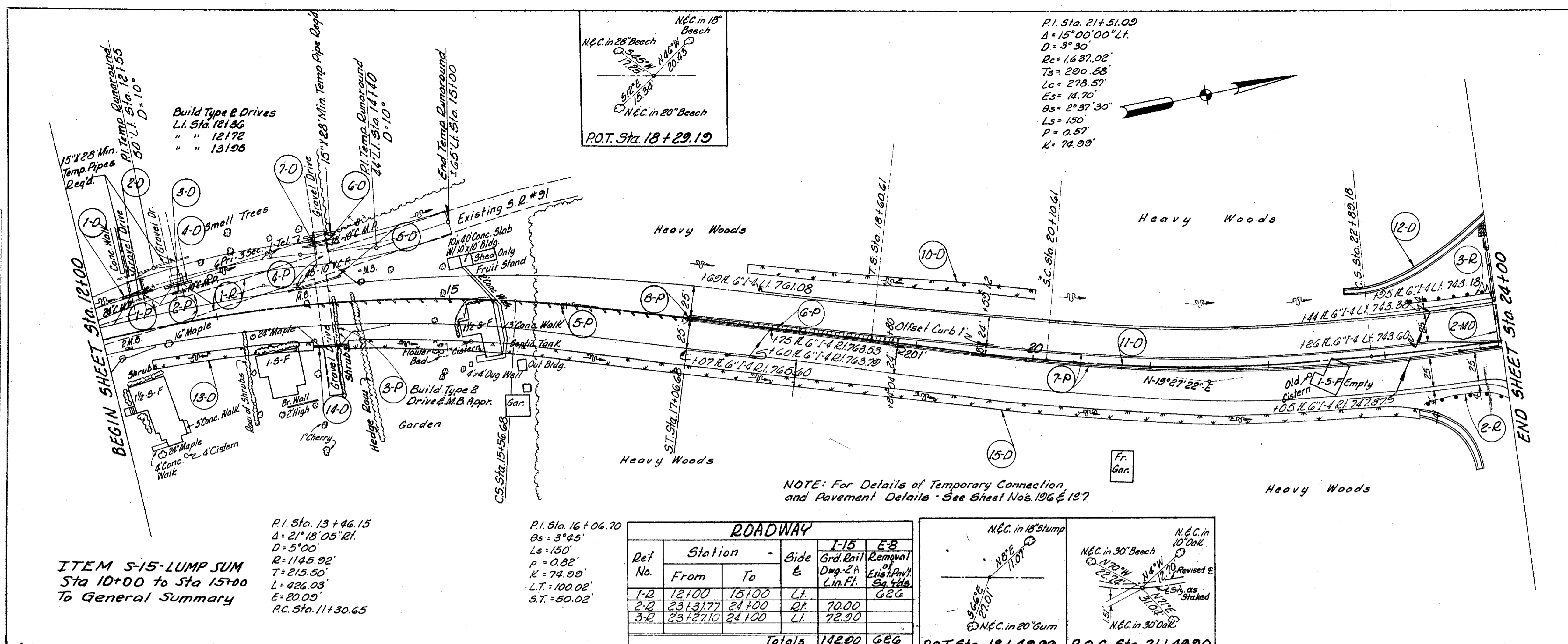


FINAL SURVEY PLOTTED, NOTE BOOK AREAS CHECKED

ORIGINAL SURVEY PLOTTED, NOTE BOOK AREAS CHECKED

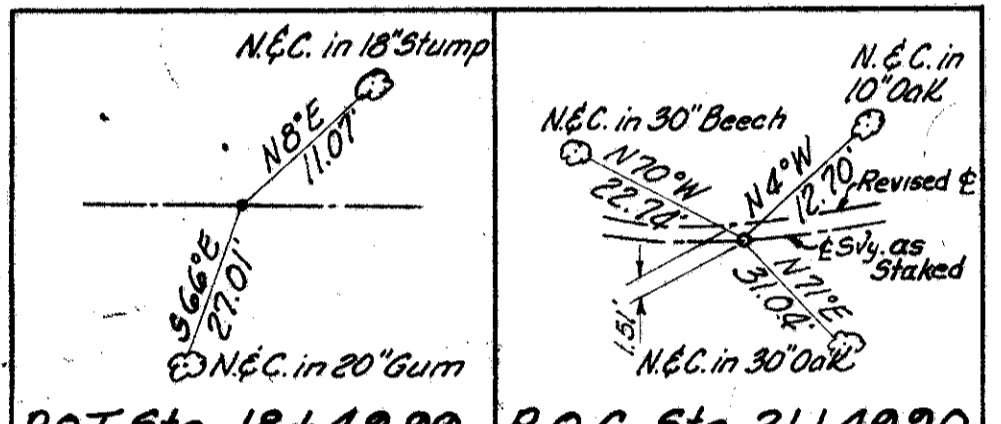


ITEM S-15-LUMP SUM
Sta 10+00 to Sta 15+00
To General Summary

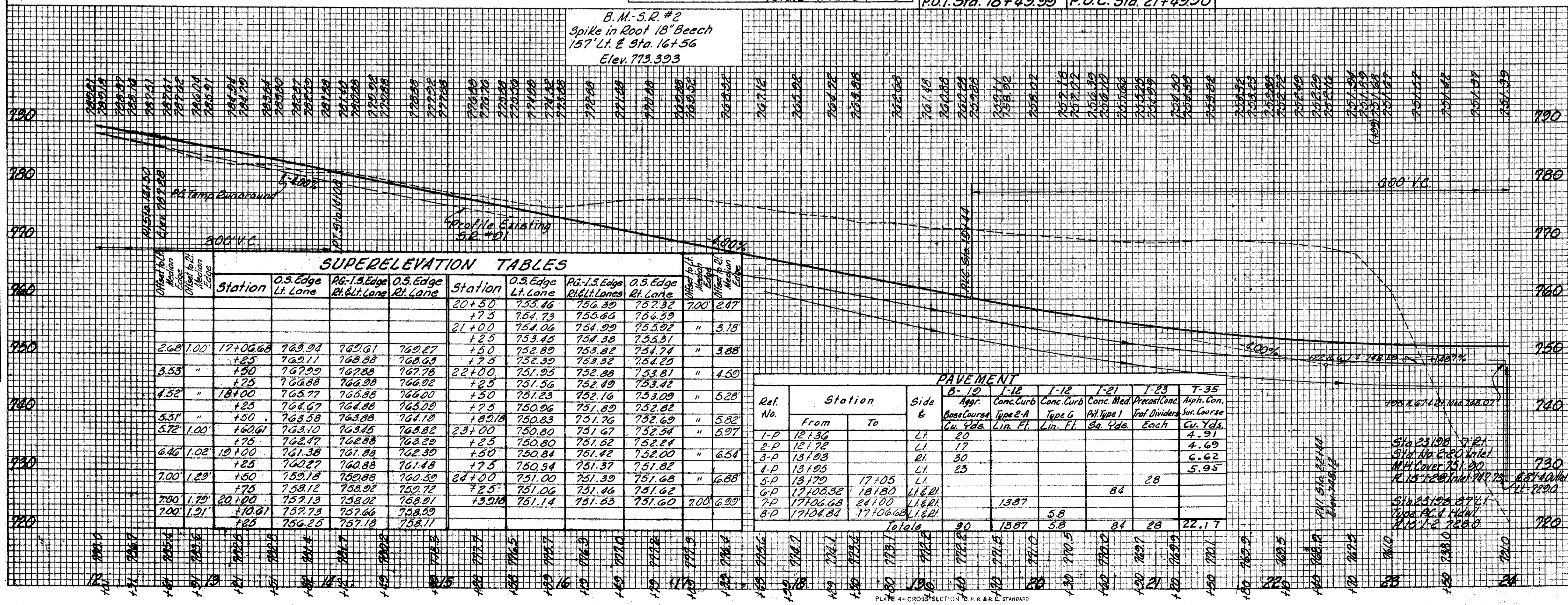
P.I. Sta. 13+46.15
Δ = 21°18'05" Rt.
D = 5'00"
R = 1145.92'
T = 215.50'
L = 426.03'
E = 20.09'
P.C. Sta. 11+30.65

P.I. Sta. 16+06.70
Δs = 3°45'
Ls = 150'
P = 0.82'
K = 74.99'
L.T. = 100.02'
S.T. = 50.02'

ROADWAY					
Det No.	Station		Side &	Grd. Rail Lin. Ft.	Removal of Dmg. Pavt. Sq. Yds.
	From	To			
1-R	12100	15100	Lt.	70.00	626
2-R	2313177	24100	Rt.	70.00	
3-R	2312710	24100	Lt.	72.90	
Totals				142.90	626



NOTE: For Details of Temporary Connection and Pavement Details - See Sheet Nos. 196 & 197



Station	0.5 Edge			Pg.-1.5 Edge			0.5 Edge		
	Lt. Lane	Rt. Lt. Lane	Rt. Lane	Lt. Lane	Rt. Lt. Lane	Rt. Lane	Lt. Lane	Rt. Lt. Lane	Rt. Lane
20+50	755.46	756.39	757.32	755.46	756.39	757.32	755.46	756.39	757.32
21+00	754.06	754.99	755.92	754.06	754.99	755.92	754.06	754.99	755.92
22+00	751.95	752.88	753.81	751.95	752.88	753.81	751.95	752.88	753.81
23+00	750.80	751.67	752.54	750.80	751.67	752.54	750.80	751.67	752.54
24+00	751.06	751.46	751.62	751.06	751.46	751.62	751.06	751.46	751.62

Ref. No.	Station		Side &	Base Course	Type 2A	Type G	Type 1	Type 1	Type 1	Type 1	Type 1
	From	To									
1-P	12136	17105	Lt.	20							
2-P	12172	17105	Lt.	17							
3-P	13198	17105	Rt.	30							
4-P	13195	17105	Lt.	25							
5-P	13179	17105	Lt.								
6-P	17105.32	18180	Lt.								
7-P	17106.68	24100	Lt.								
8-P	17108.84	17106.68	Lt.								
Totals				90	1387	58	84	28	22.17		

Station	From		Side &	To	Eliminated	Cu. Yds.
	From	To				
20+00	231198	24100	Lt.	20100	4.3	
1-0	12138	23190	Lt.	23190	4.69	
2-0	12138	24100	Lt.	24100	6.62	
3-0	12138	13174	Lt.	13174	5.95	
4-0	12173	20105	Lt.	20105		
5-0	12173	21100	Lt.	21100		
6-0	13195	17100	Lt.	17100		
7-0	13195	17100	Lt.	17100		
8-0	13195	17100	Lt.	17100		
9-0	13195	17100	Lt.	17100		
10-0	17100	20100	Lt.	20100		
11-0	17100	23190	Lt.	23190		
12-0	17100	24100	Lt.	24100		
13-0	17100	13174	Lt.	13174		
14-0	17100	20105	Lt.	20105		
15-0	17100	21100	Lt.	21100		
16-0	17100	17100	Lt.	17100		

This sheet supersedes sheet No. 193 4-6-60 P.E.C.

MICHAEL BAKER, JR., CONSULTING ENGINEERS
ROCHESTER, PENNSYLVANIA

STATE OF OHIO
DEPARTMENT OF HIGHWAYS
STATE HIGHWAY NO. 1
C-43
STATE ROUTE NO. 91 RELOCATION
STA. 12+00 TO STA. 24+00

Designed	Drawn	Traced	Checked	Reviewed	Date	Revised
H.V.	A.L.H.	K.A.	B.P.			