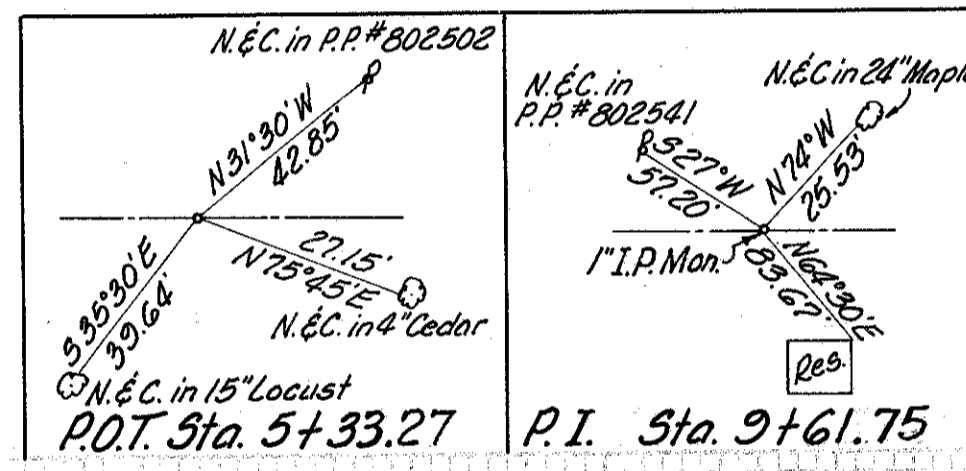
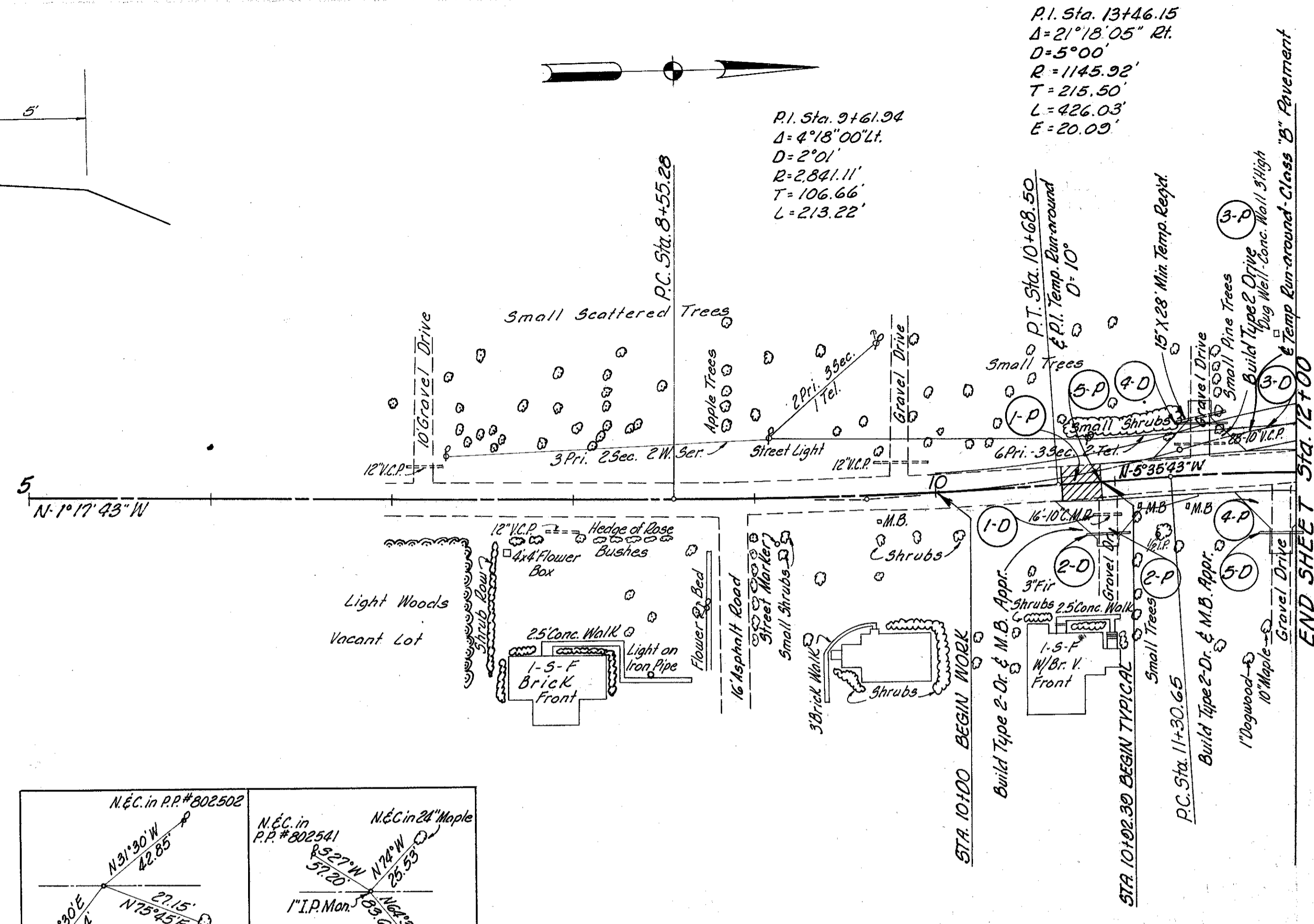
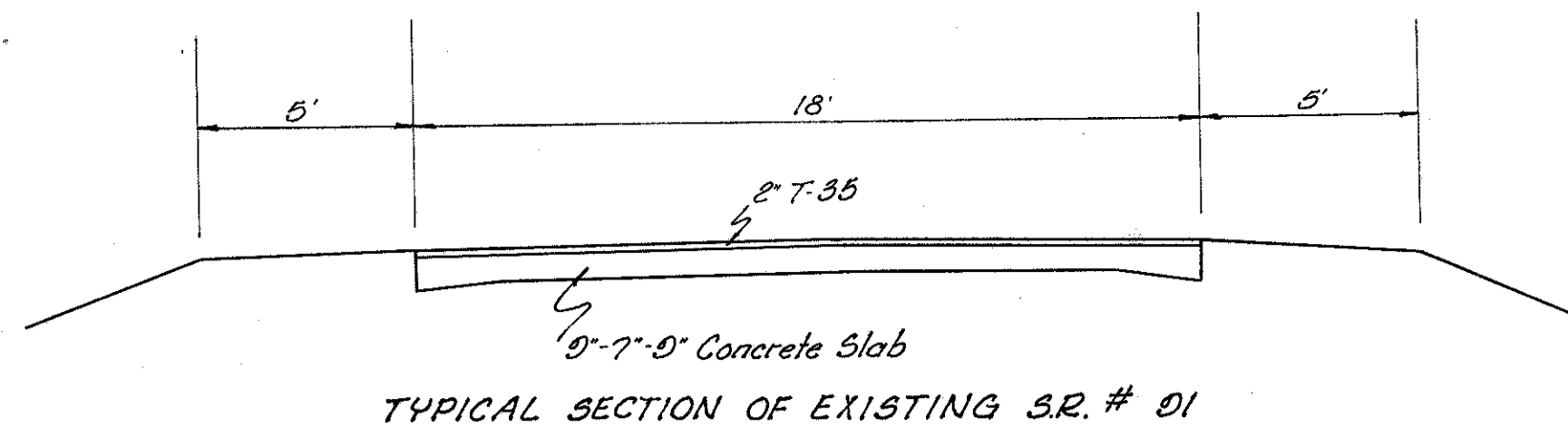
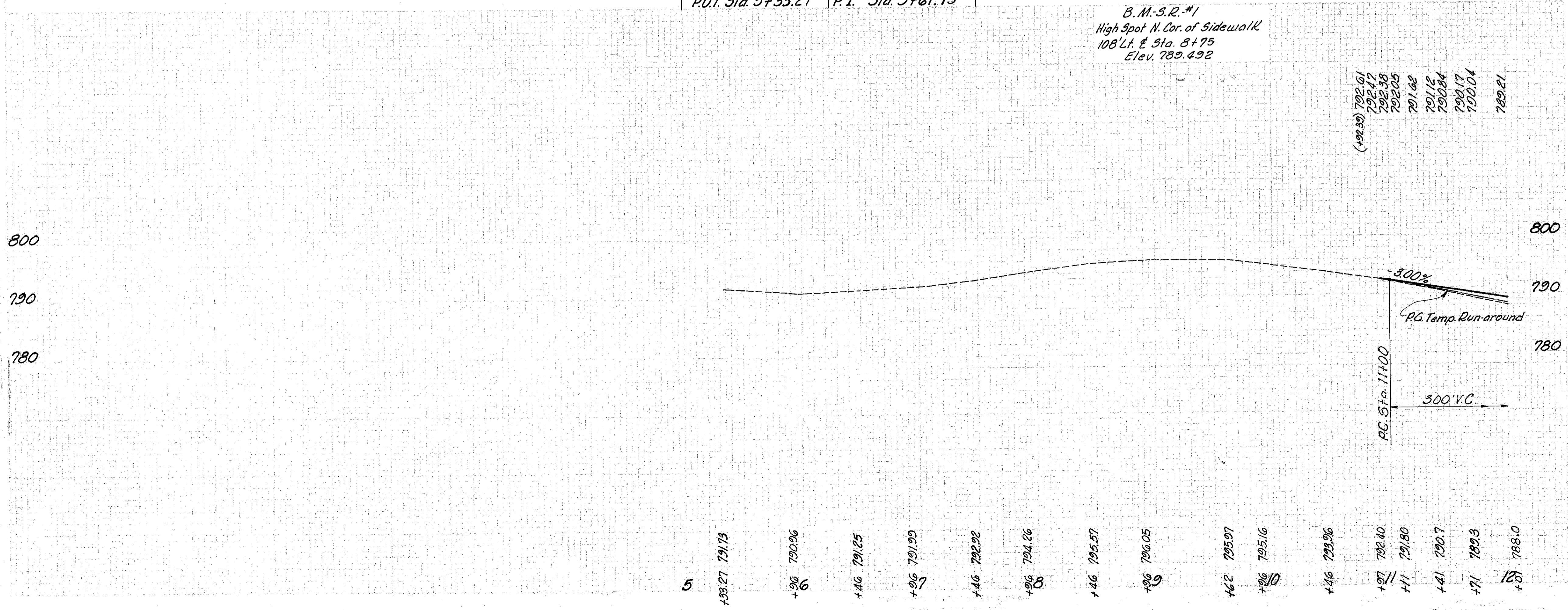


LAKE COUNTY
LAK-I-2.16



NOTE: For Details of Temporary Conn. and Edge Elevations, See Sheet No. 196

B.M.-S.R.#1
High Spot N. Cor. of Sidewalk
108' Lt. & Sta. 8+75
Elev. 789.492



ROADWAY				
Ref. No.	Station		Side &	E-B Removal of Exst. Pavt. Sq. Yds.
	From	To		
1-2	10+00.00	12+00	Lt.	215
Total				215

PAVEMENT						
Ref. No.	Station		Side &	T-35 Conc. Surf. Course Cu. Yds.	B-19 Base Course Cu. Yds.	B-35 Sealing Vertical Face of Exst. Pavt. Lin. Ft.
	From	To				
1-P	101.70	101.92.30	Lt.	1.13		
2-P	101.93		Rt.	4.32	22	
3-P	111.92		Lt.	4.69	12	
4-P	111.91		Rt.	4.99	22	18
5-P	101.92.30		Lt.			
Totals				15.13	58	18

See Sheet Ref. No.	Station	Side &	DRAINAGE			
			I-1		I-2	
			From	To	From	To
	101.03	Rt.	16			
	101.93	Lt.	28			
	111.48	Lt.	26			
	111.91	Rt.		12+00		
	111.00	Rt.				
Totals			26	52	30	30

MICHAEL BAKER, JR., CONSULTING ENGINEERS
ROCHESTER, PENNSYLVANIA

STATE OF OHIO
DEPARTMENT OF HIGHWAYS
STATE HIGHWAY NO. 1
C-43
STATE ROUTE NO. 91 RELOCATION
STA. 5+00 TO STA. 12+00

Designed	Drawn	Traced	Checked	Reviewed Date	Revised
H.V.V.	A.L.H.	K.A.	B.P.		