

LAKE COUNTY  
LAK-1-2.16

ROADWAY & PAVEMENT					
Ref. No	Station		Side &	I-15	I-12
	From	To		Grd. Rail Dug 2-A Lin. Ft.	Conc. Curb Special Lin. Ft.
1-R	114+00	81+22.5	LT.	425.0	
2-R	9+00	13+25	RT.	325.0	
3-R	12+23.34	13+50	LT.	125.0	
1-P	4+63.97	11+14	RT.		654.00
Totals				875.0	654.00

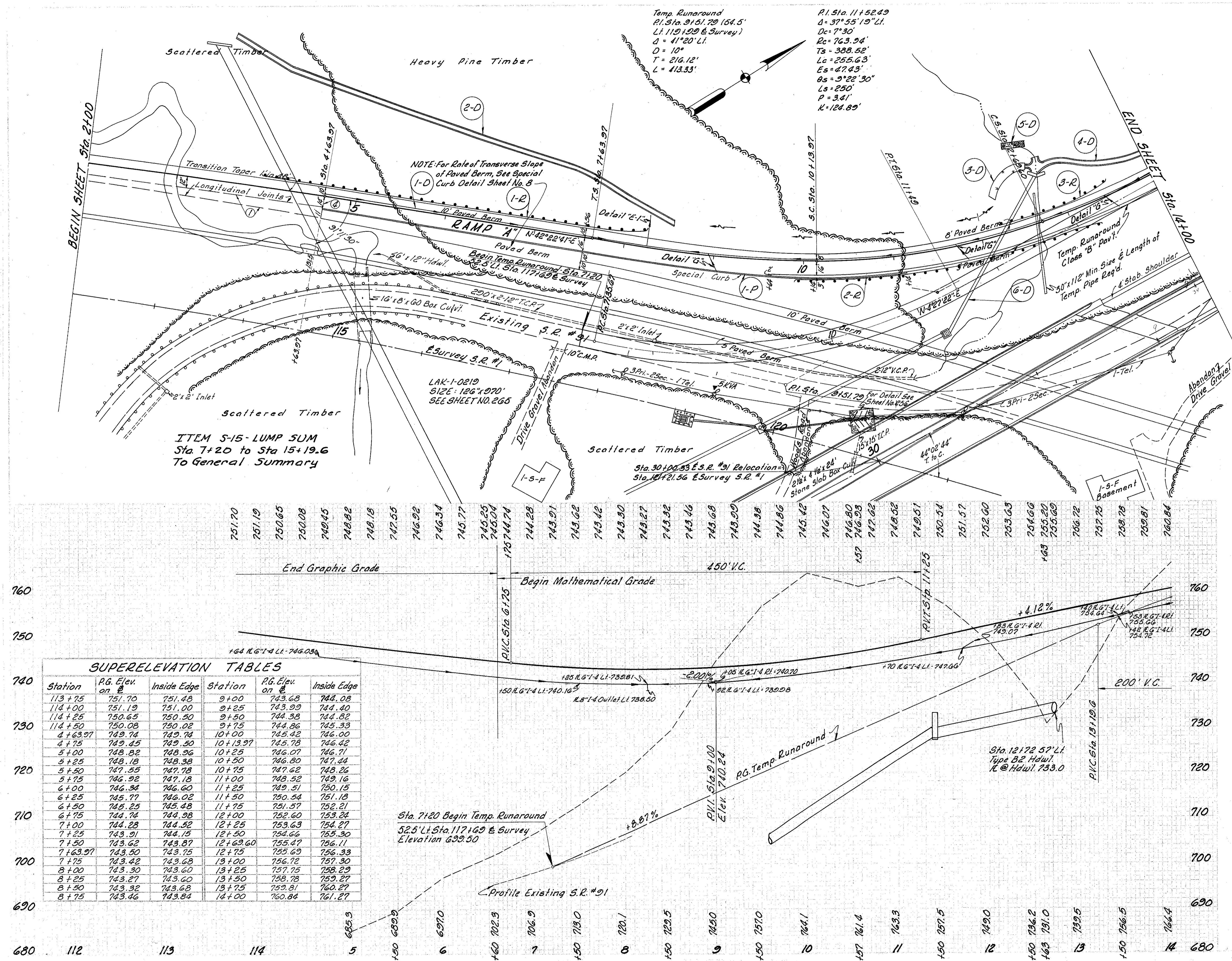
- ~ LEGEND ~
- ① Standard Longitudinal Joint
  - ② Standard Key Joint Without Tie Bars
  - ③ Expansion Joint Without Dowels (Loc. on radial lines)
  - ④ Expansion Joint With Dowels

See Sheet Ref. No.	Station	From	To	Excavation		Underdrain		Pipe Culverts		Underdrain		Excavation		Underdrain		Pipe Culverts		Underdrain	
				Excavation	Side	Excavation	Side	Excavation	Side	Excavation	Side	Excavation	Side	Excavation	Side	Excavation	Side	Excavation	Side
256	1-D	4+64	14+00																
33	2-D	113+50	81+50																
161	3-D	12+25	12+50																
260	5-D	12+50	14+00																
	6-D	12+24																	
Totals																			

MICHAEL BAKER, JR., CONSULTING ENGINEERS  
ROCHESTER, PENNSYLVANIA

STATE OF OHIO  
DEPARTMENT OF HIGHWAYS  
STATE HIGHWAY NO. 1  
C-43  
S.R. NO. 91 INTERCHANGE RAMP "A"  
STA. 2+00 TO STA. 14+00

Designed	Drawn	Traced	Checked	Reviewed	Date	Revised
H.V.	J.S.H.	A.L.H.	B.P.			



ITEM S-15- LUMP SUM  
Sta 7+20 to Sta 15+19.6  
To General Summary

NOTE: For Rate of Transverse Slope of Paved Berm, See Special Curb Detail Sheet No. 8

Temp. Runaround  
P.I. Sta. 9+51.20 (54.5'  
Lt. 119+20 @ Survey)  
Δ = 41°20' Lt.  
D = 10°  
T = 216.12'  
L = 413.33'

P.I. Sta. 11+52.43  
Δ = 37°55'19" Lt.  
Dc = 7°30'  
Rc = 763.94'  
Ts = 388.52'  
Lc = 255.63'  
Es = 47.43'  
Os = 9°22'30"  
Ls = 250'  
P = 3.41'  
K = 124.89'

Station	R.G. Elev. on E	Inside Edge	Station	R.G. Elev. on E	Inside Edge
113+75	751.70	751.48	9+00	743.68	744.08
114+00	751.19	751.00	9+25	743.99	744.40
114+25	750.65	750.50	9+50	744.38	744.82
114+50	750.08	750.02	9+75	744.86	745.33
4+63.97	749.74	749.74	10+00	745.42	746.00
4+75	749.45	749.50	10+19.97	745.78	746.42
5+00	748.82	748.96	10+25	746.07	746.71
5+25	748.18	748.38	10+50	746.80	747.44
5+50	747.55	747.78	10+75	747.62	748.26
5+75	746.92	747.18	11+00	748.52	749.16
6+00	746.34	746.60	11+25	749.51	750.15
6+25	745.77	746.02	11+50	750.54	751.18
6+50	745.25	745.48	11+75	751.57	752.21
6+75	744.74	744.98	12+00	752.60	753.24
7+00	744.28	744.52	12+25	753.63	754.27
7+25	743.91	744.15	12+50	754.66	755.30
7+50	743.62	743.87	12+63.60	755.47	756.11
7+63.97	743.50	743.75	12+75	755.69	756.33
7+75	743.42	743.68	13+00	756.72	757.30
8+00	743.30	743.60	13+25	757.75	758.29
8+25	743.27	743.60	13+50	758.78	759.27
8+50	743.32	743.68	13+75	759.81	760.27
8+75	743.46	743.84	14+00	760.84	761.27