

LAKE COUNTY
LAK-I-2.16

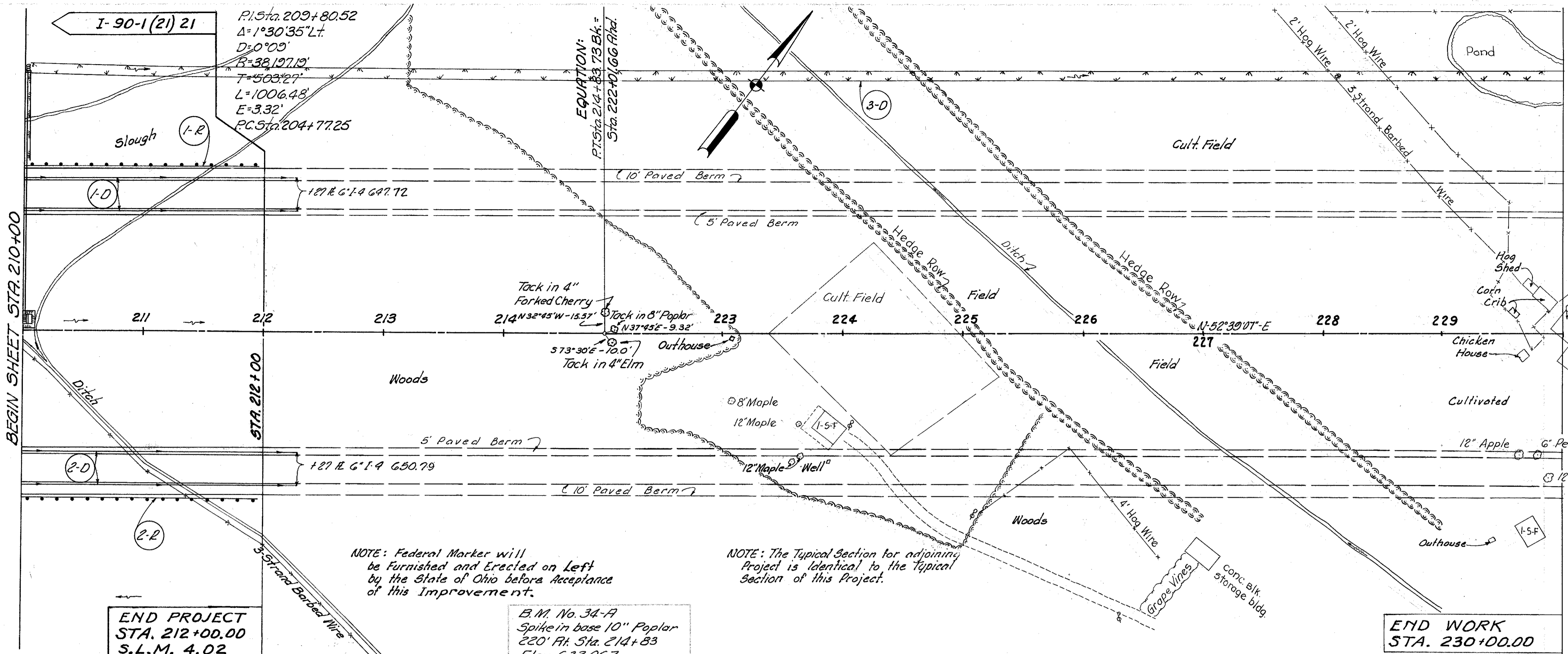
ROADWAY				
Ref. No.	Station		Side &	I-15 Ord. Rail Dwg. 2A Lin. Ft.
	From	To		
I-R	210+00	211+05.76	LA	195.05
I-R	210+00	211+06.59	2A	197.50
Total				392.55

See Sh. No.	Station	Side &	DRAINAGE				Totals
			I-4		L-10		
			From	To	From	To	
	I-D	210+00	212+87	LI	459		
	I-R	210+00	212+87	2A	459		
	I-D	210+00	230+00	LI	1136		
						3098	1136

MICHAEL BAKER JR., CONSULTING ENGINEERS
ROCHESTER, PENNSYLVANIA

STATE OF OHIO
DEPARTMENT OF HIGHWAYS
STATE HIGHWAY NO 1
C-43
PLAN AND PROFILE
STA. 210+00 TO STA. 229+00

Designed	Drawn	Traced	Checked	Reviewed	Date	Revised
B.P.	A.L.H.	K.A.	REF.			



NOTE: Federal Marker will be furnished and erected on left by the State of Ohio before acceptance of this improvement.

NOTE: The Typical Section for adjoining Project is identical to the Typical Section of this Project.

END PROJECT
STA. 212+00.00
S.L.M. 4.02

B.M. No. 34-A
Spike in base 10" Poplar
220' FH Sta. 214+83
Elev. 632.067

END WORK
STA. 230+00.00

Station	North Bound Lanes	South Bound Lanes	Station	North Bound Lanes	South Bound Lanes
210	658.42	652.60	215	652.10	646.28
211	657.03	652.39	216	651.71	645.89
212	657.46	652.81	217	651.32	645.50
213	656.29	652.08	218	650.93	645.11
214	656.54	651.88	219	650.54	644.72
215	656.10	651.74	220	650.15	644.33
216	655.67	651.63	221	649.76	643.94
217	655.26	651.53	222	649.37	643.55
218	654.86	651.45	223	648.98	643.16
219	654.47	651.45	224	648.59	642.77
220	654.09	651.09	225	648.20	642.38
221	653.71	650.71	226	647.81	641.99
222	653.32	650.32	227	647.42	641.60
223	653.05	650.05	228	647.03	641.21
224	652.70	650.00	229	646.64	640.82
225	652.38	649.85			
226	652.08	649.70			
227	651.78	649.40			
228	651.51	649.10			
229	651.15	648.80			
230	650.92	648.50			
231	650.67	648.20			
232	650.45	647.90			
233	650.25	647.60			
234	650.00	647.30			
235	649.77	647.00			
236	649.59	646.70			
237	649.41	646.40			
238	649.25	646.10			
239	649.07	645.80			
240	648.94	645.50			
241	648.77	645.20			
242	648.60	644.90			
243	648.45	644.60			
244	648.30	644.30			
245	648.15	644.00			
246	648.00	643.70			
247	647.85	643.40			
248	647.70	643.10			
249	647.55	642.80			
250	647.40	642.50			
251	647.25	642.20			
252	647.10	641.90			
253	646.95	641.60			
254	646.80	641.30			
255	646.65	641.00			
256	646.50	640.70			
257	646.35	640.40			
258	646.20	640.10			
259	646.05	639.80			
260	645.90	639.50			
261	645.75	639.20			
262	645.60	638.90			
263	645.45	638.60			
264	645.30	638.30			
265	645.15	638.00			
266	645.00	637.70			
267	644.85	637.40			
268	644.70	637.10			
269	644.55	636.80			
270	644.40	636.50			
271	644.25	636.20			
272	644.10	635.90			
273	643.95	635.60			
274	643.80	635.30			
275	643.65	635.00			
276	643.50	634.70			
277	643.35	634.40			
278	643.20	634.10			
279	643.05	633.80			
280	642.90	633.50			
281	642.75	633.20			
282	642.60	632.90			
283	642.45	632.60			
284	642.30	632.30			
285	642.15	632.00			
286	642.00	631.70			
287	641.85	631.40			
288	641.70	631.10			
289	641.55	630.80			
290	641.40	630.50			
291	641.25	630.20			
292	641.10	629.90			
293	640.95	629.60			
294	640.80	629.30			
295	640.65	629.00			
296	640.50	628.70			
297	640.35	628.40			
298	640.20	628.10			
299	640.05	627.80			
300	639.90	627.50			

NOTE: The Contractor shall provide adequate cut outs for I-4 Underdrains (Payment included in unit price bid for I-4 underdrains)

EQUATION: P.T. Sta. 214+83.73 Bk. = 222+01.66 Ah.

North Bound Lanes
660
650
640
630
620
610

North Bound Lanes
660
650
640
630
620
610