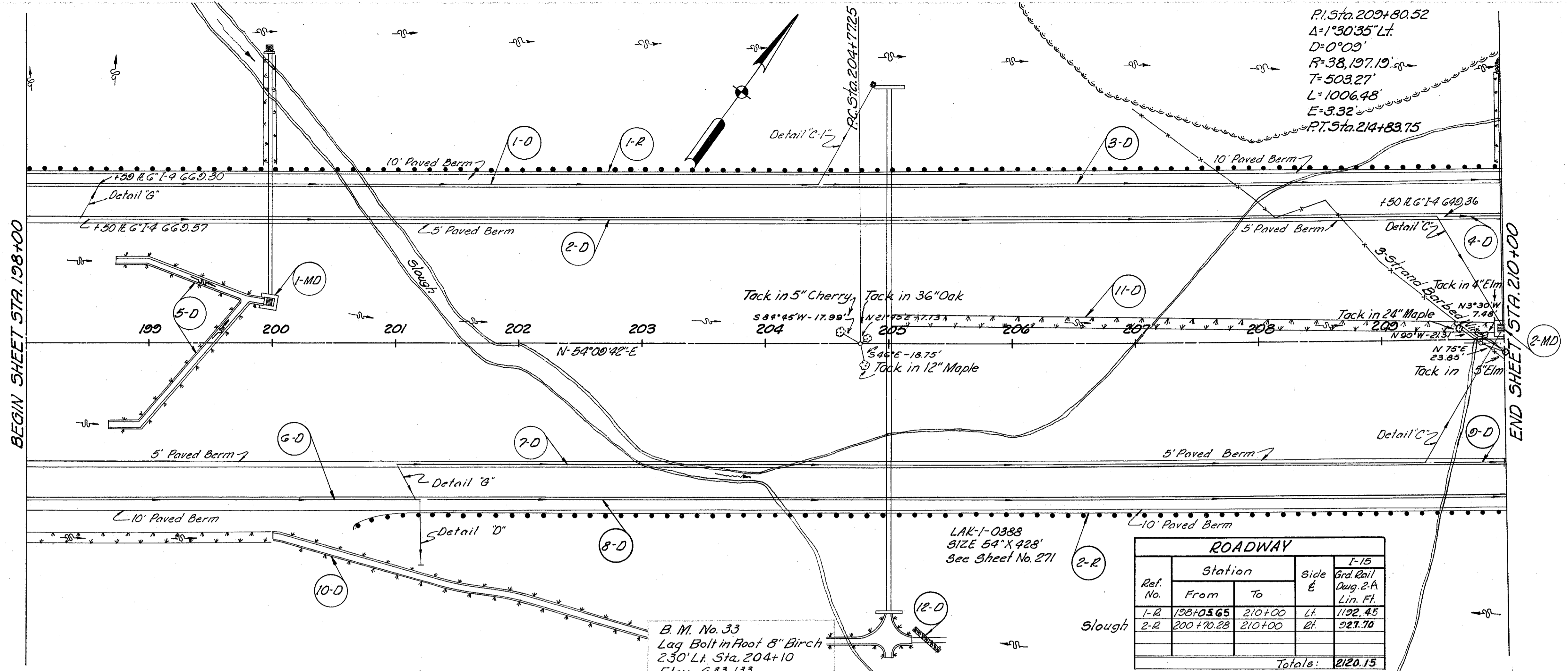
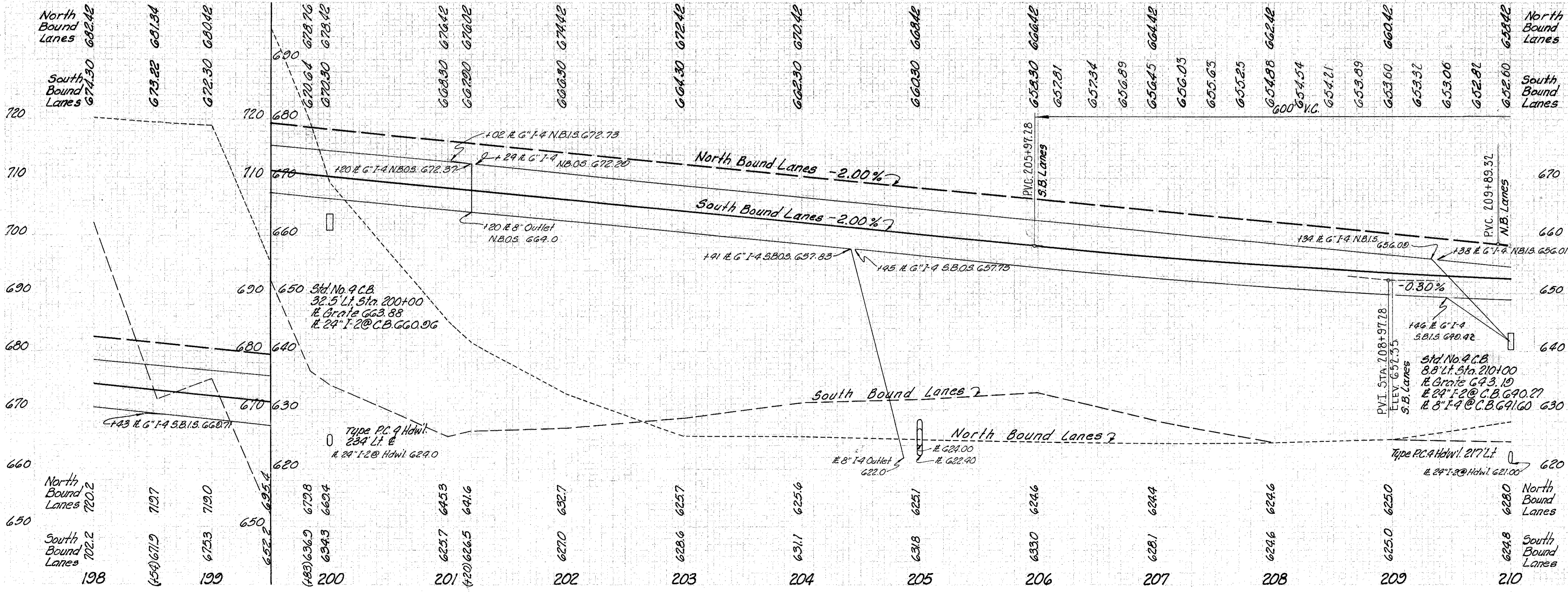


LAKE COUNTY  
LAK-1-2.16



$P.I. Sta. 209+80.52$   
 $\Delta = 1^{\circ}30'35'' Lt.$   
 $D = 0^{\circ}09'$   
 $R = 38,197.19'$   
 $T = 503.27'$   
 $L = 1006.48'$   
 $E = 3.32'$   
 $P.T. Sta. 214+83.75$

ROADWAY				
Ref. No.	Station		Side	I-15 Grd. Rail Dug 2-A Lin. Ft.
	From	To		
1-R	198+05.65	210+00	Lt.	1192.45
2-R	200+70.28	210+00	Rt.	921.70
Totals:				2120.15



See Sheet No.	Ref. No.	Station	Side	Excavation		Structure		Pipe		Specials		Totals
				From	To	Excav.	Structure	Excav.	Structure	Excav.	Structure	
141	1-MD	200+00	Lt.	200+00	200+00	2	1	1	1	1	1	1
149	2-MD	210+00	Lt.	210+00	210+00	2	1	1	1	1	1	1
256	1-D	198+50	Lt.	198+50	210+00	1	1	1	1	1	1	1
256	2-D	198+50	Lt.	198+50	210+00	1	1	1	1	1	1	1
198	3-D	200+50	Lt.	200+50	210+00	1	1	1	1	1	1	1
198	5-D	198+70	Lt.	198+70	200+00	1	1	1	1	1	1	1
256	6-D	198+00	Rt.	198+00	210+00	1	1	1	1	1	1	1
256	7-D	201+00	Rt.	201+00	210+00	1	1	1	1	1	1	1
142	8-D	209+58	Rt.	209+58	210+00	1	1	1	1	1	1	1
142	10-D	198+00	Rt.	204+90	209+90	1	1	1	1	1	1	1
260	12-D	205+00	Rt.	205+00	209+90	1	1	1	1	1	1	1
				Totals:		4	118	148	140	446	379	40

MICHAEL BAKER JR., CONSULTING ENGINEERS  
ROCHESTER, PENNSYLVANIA

STATE OF OHIO  
DEPARTMENT OF HIGHWAYS  
STATE HIGHWAY NO. 1  
C-43  
PLAN AND PROFILE  
STA. 198+00 TO STA. 210+00

Designed	Drawn	Traced	Checked	Reviewed	Date	Revised
B.P.	A.L.H.	K.L.G.	R.E.F.			