

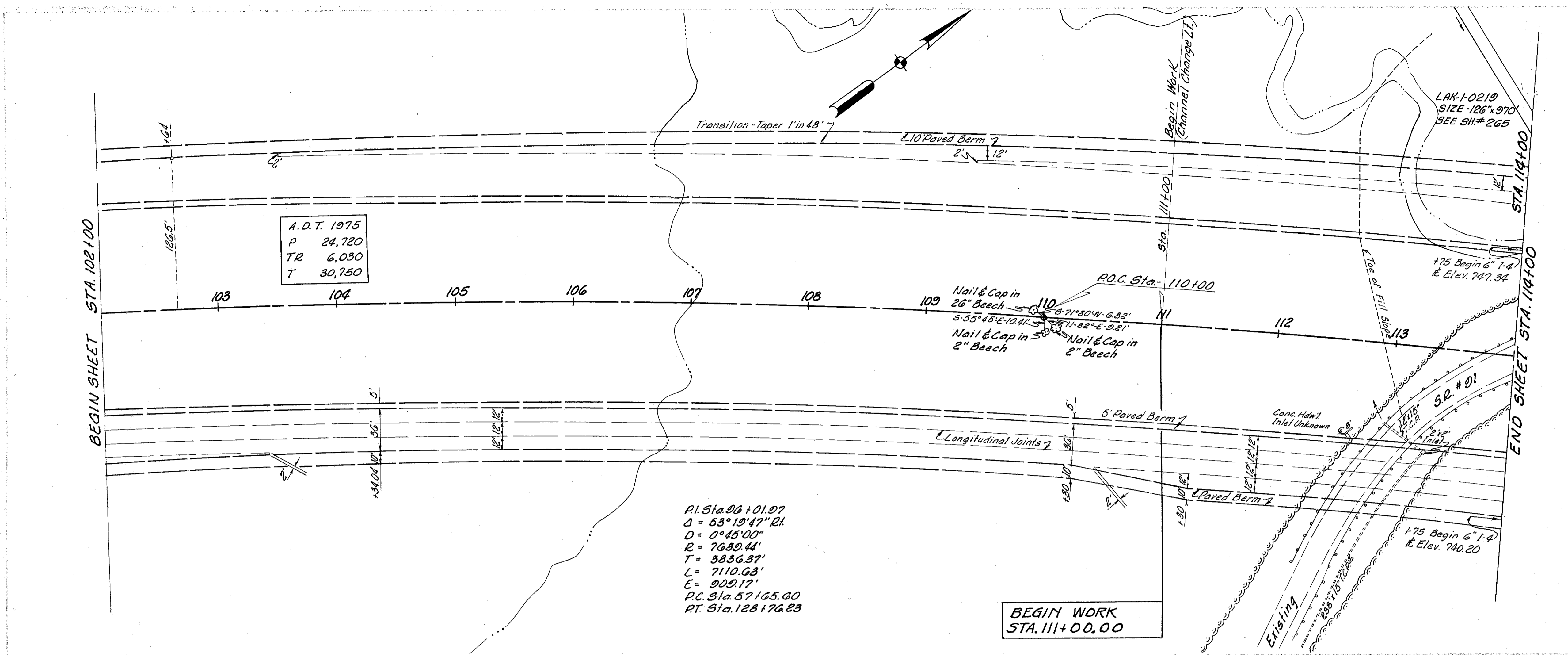
FED. RD. DIVISION	STATE	PROJECT
2	OHIO	I-1103 (19)

20  
312

LAKE COUNTY  
LAK-I-2.16

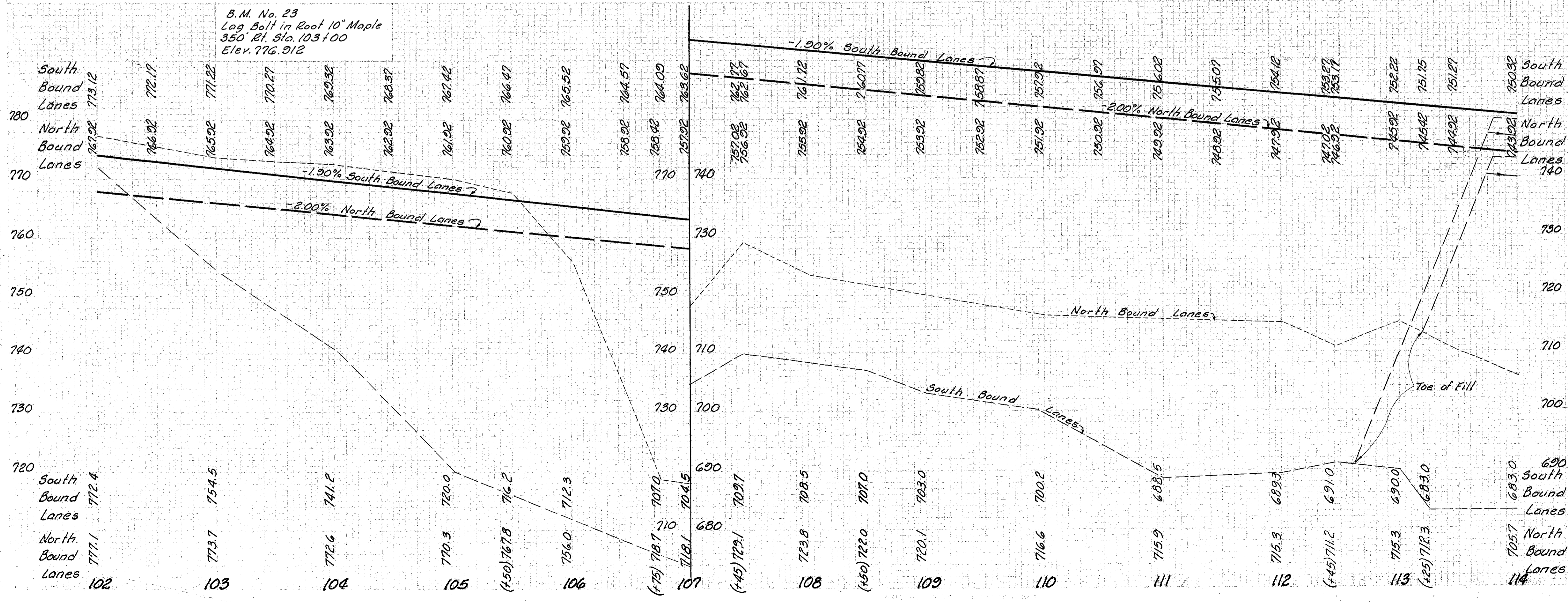
Note: The Typical Section for adjoining Project is identical to the Typical Section of this Project.

UTILITY OWNERSHIP  
CLEVELAND ELECTRIC ILLUMINATING CO.  
75 PUBLIC SQUARE BUILDING  
CLEVELAND 1, OHIO  
OHIO BELL TELEPHONE CO.  
820 W. SUPERIOR AVE.  
CLEVELAND 13, OHIO



P.I. Sta. 96+01.97  
 $\Delta = 53^\circ 19' 47'' 21$   
 $D = 0^\circ 45' 00''$   
 $R = 7639.44'$   
 $T = 3336.37'$   
 $L = 7110.63'$   
 $E = 909.17'$   
 P.C. Sta. 57+65.60  
 P.T. Sta. 128+76.23

BEGIN WORK  
STA. 111+00.00



MICHAEL BAKER JR., CONSULTING ENGINEERS  
ROCHESTER, PENNSYLVANIA

STATE OF OHIO  
DEPARTMENT OF HIGHWAYS  
STATE HIGHWAY NO. 1  
C-43  
PLAN AND PROFILE  
STA. 102+00 TO STA. 114+00

Designed	Drawn	Traced	Checked	Reviewed Date	Revised
B.P.	A.L.H.	K.L.G.	REF.		