

~ CURVE DATA S.R.#91 RELOCATION ~

P.I. Sta. 9+61.94 Δ=4°18'00" Lt. D=2°01' R=2,841.11' T=106.66' L=213.22'	P.I. Sta. 21+51.09 Δ=15°00'00" Lt. D=3°30' Rc=1,637.02' Ts=290.58' Lc=278.57' Es=14.70' θs=2°37'30" Ls=150' P=0.57' K=74.99'	P.I. Sta. 39+00.00 Δ=3°45'45" Rt. D=1°00' R=5,729.58' T=188.19' L=376.25' E=3.09'	P.I. Sta. 44+16.60 Δ=3°20'30" Lt. D=1°00' R=5,729.58' T=167.13' L=334.17' E=2.44'
---	--	---	---

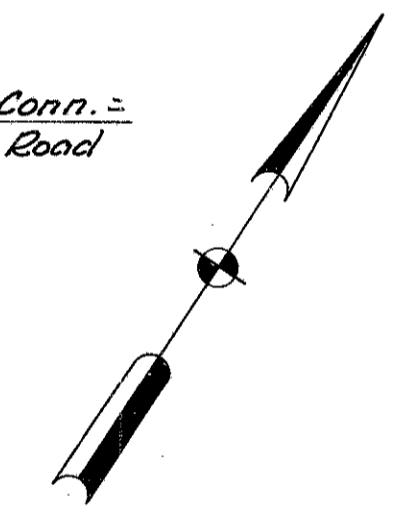
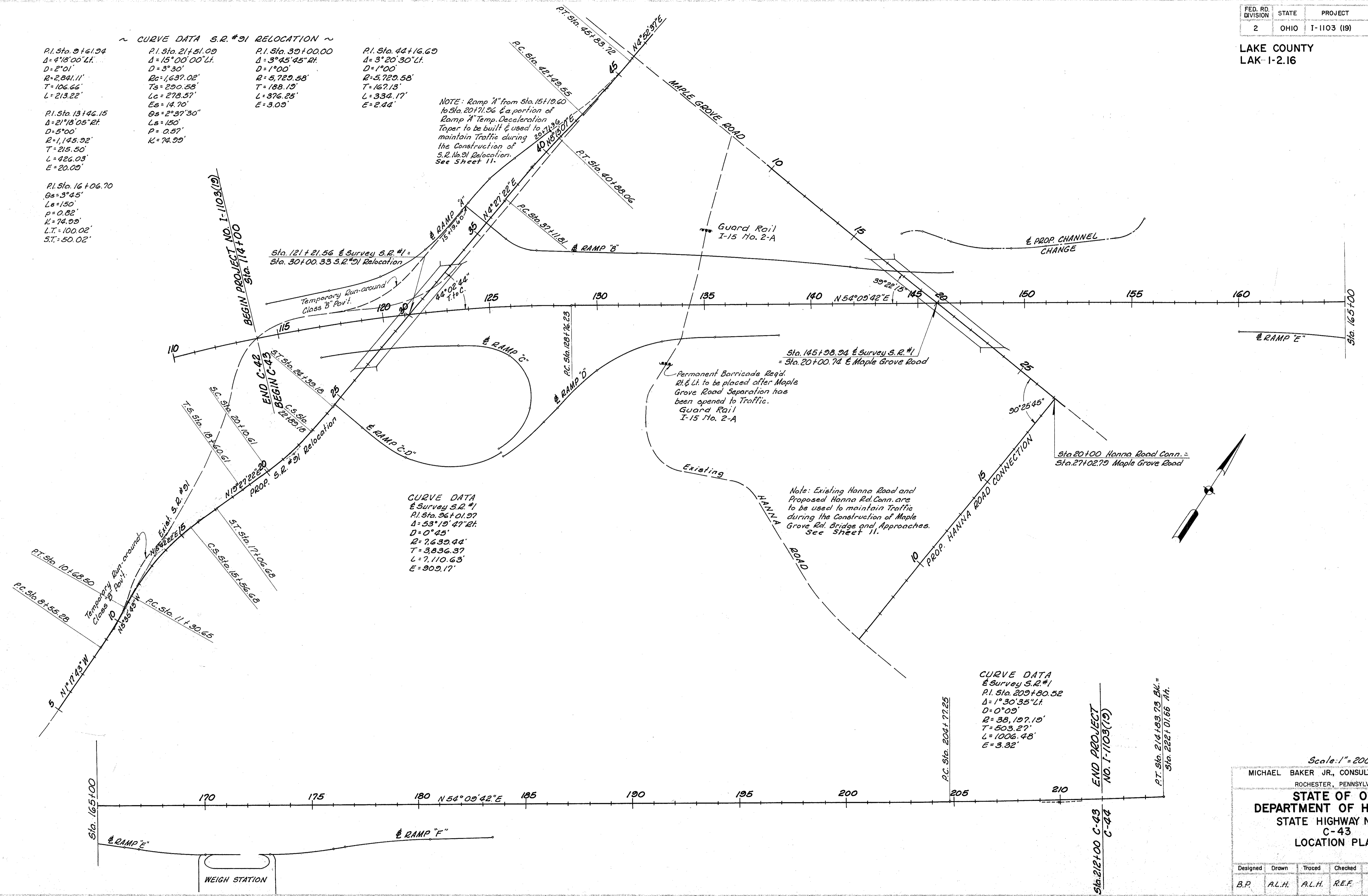
P.I. Sta. 13+46.15
Δ=2°18'05" Rt.
D=5°00'
R=1,145.92'
T=215.50'
L=426.03'
E=20.00'

P.I. Sta. 16+06.70
θs=9°45'
Ls=150'
P=0.82'
K=74.99'
L.T.=100.02'
S.T.=50.02'

NOTE: Ramp "A" from Sta. 15+19.60 to Sta. 20+71.96 & a portion of Ramp "A" Temp. Deceleration Taper to be built & used to maintain Traffic during the Construction of S.R. No. 91 Relocation. See Sheet 11.

CURVE DATA
S. Survey S.R.#1
P.I. Sta. 96+01.97
Δ=53°19'27" Rt.
D=0°45'
R=7,639.44'
T=3,836.37'
L=7,110.63'
E=909.17'

CURVE DATA
S. Survey S.R.#1
P.I. Sta. 209+30.52
Δ=1°30'35" Lt.
D=0°09'
R=38,197.10'
T=503.27'
L=1006.48'
E=3.32'



Scale: 1" = 200'

MICHAEL BAKER JR., CONSULTING ENGINEERS
ROCHESTER, PENNSYLVANIA

STATE OF OHIO
DEPARTMENT OF HIGHWAYS
STATE HIGHWAY NO. 1
C-43
LOCATION PLAN

Designed	Drawn	Traced	Checked	Reviewed Date	Revised
B.P.	ALH.	ALH.	R.E.F.		