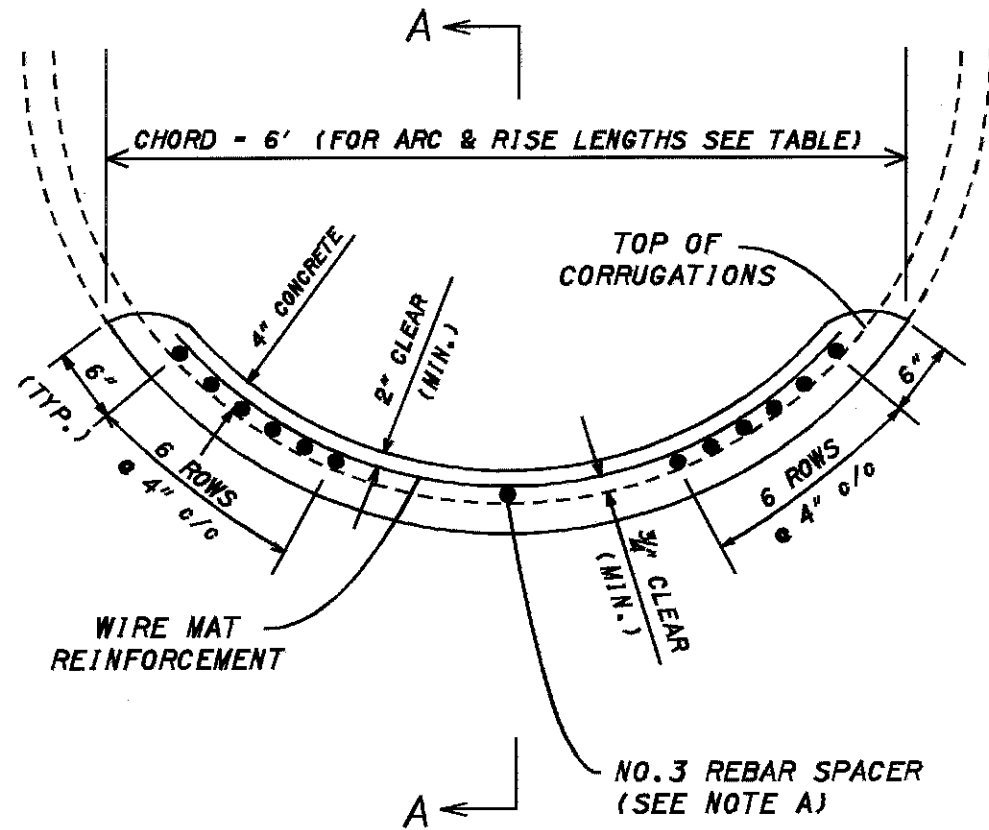


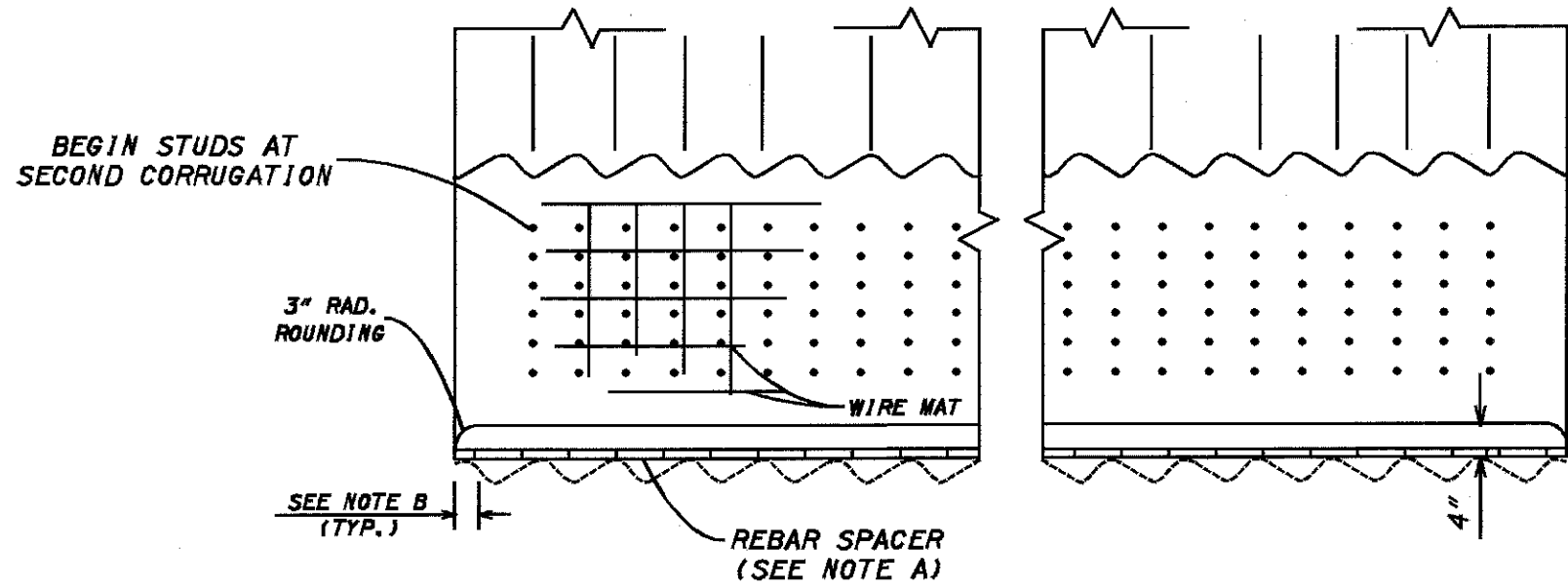
DETAIL SHEET



**TYPICAL SECTION
CULVERT INVERT RESTORATION**

NOTE A - WELD ALL REBAR TO TOP OF EVERY THIRD CORRUGATION EACH SIDE OF THE REBAR WITH A 1/4" FILLET WELD, 1/4" LONG.

NOTE B - END PROPOSED REBAR AND WIRE MAT 3" FROM THE END OF THE EXISTING C.M.P. CULVERT.



SECTION A-A

CULVERT CHORD/ARC TABLE

DIAMETER INCHES	REPAIR CHORD	REPAIR ARC LENGTH	RISE	A° _C	MAT ARC WIDTH *
96"	6'	6.78'	1.35'	97.0°	6.11'

* MAT ARC WIDTH - APPROXIMATE CONCRETE REPAIR ARC MINUS 8"

NOTE: TABLE VALUES ARE CALCULATED, CONTRACTOR MUST VERIFY VALUES WITH ACTUAL MEASUREMENTS

PLOT SUBMITTED: 08-JAN-1998 14:25

90-17869s.dgn

PLOTTED BY: dst ipkov

DESIGNED
DMS
CHECKED
LDH

CULVERT RESTORATION DETAILS

LAKE COUNTY
LAK-90-17.86

26
26