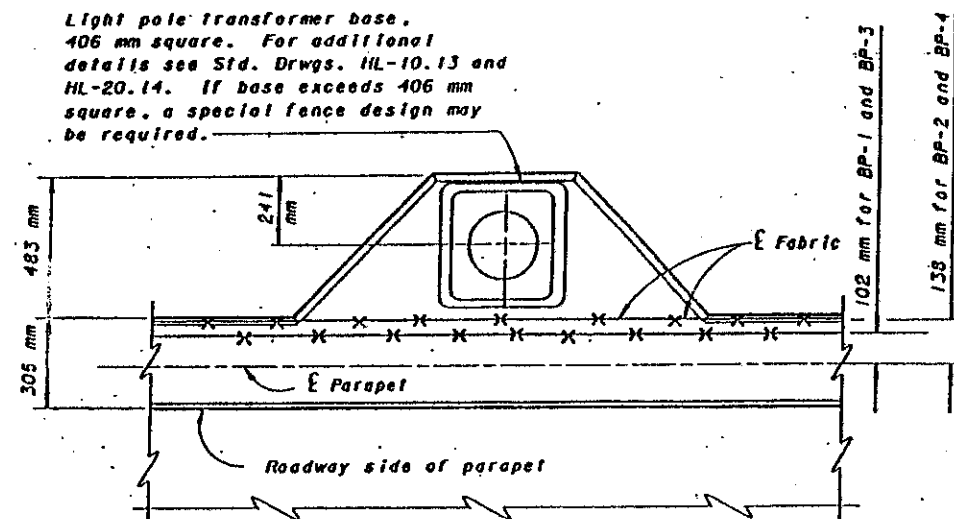


POST SECTION PS-1

(3650 mm CURVED FENCE)

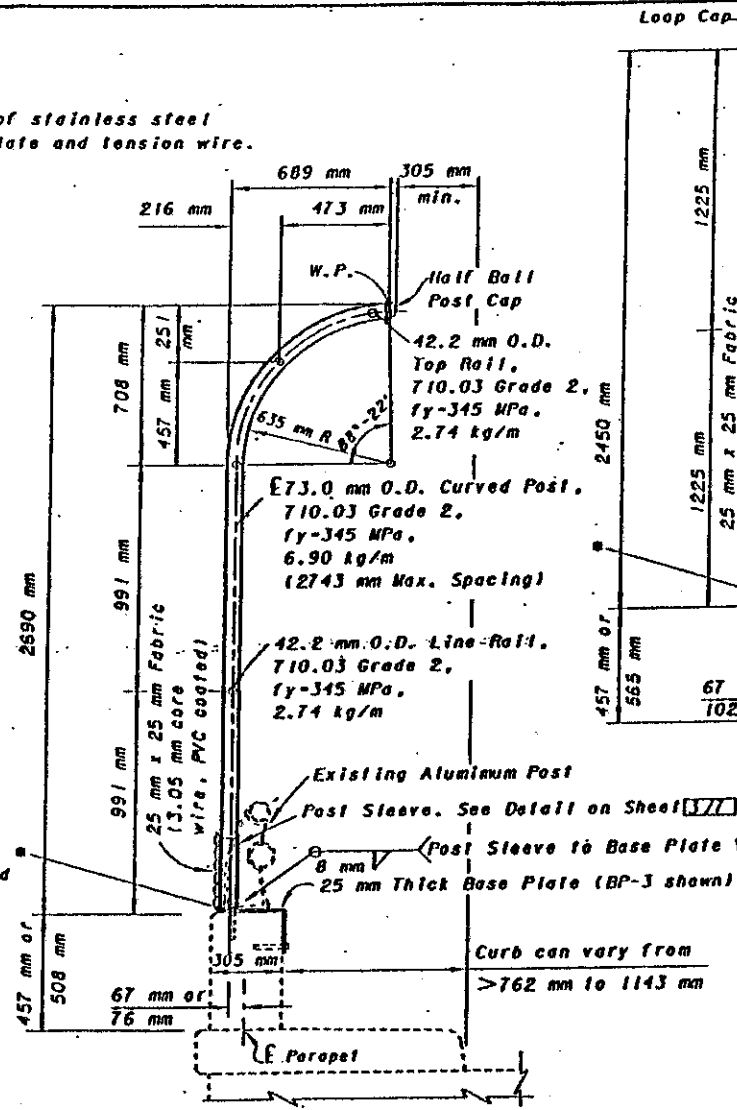
Notes: For Post Sections PS-1 and PS-2, see project plans for sidewalk, parapet and fence post dimensions. Begin fabric at Base Plate. (Maximum gap between fabric and concrete parapet = 25 mm)

Light pole transformer base, 406 mm square. For additional details see Std. Drwgs. HL-10.13 and HL-20.14. If base exceeds 406 mm square, a special fence design may be required.



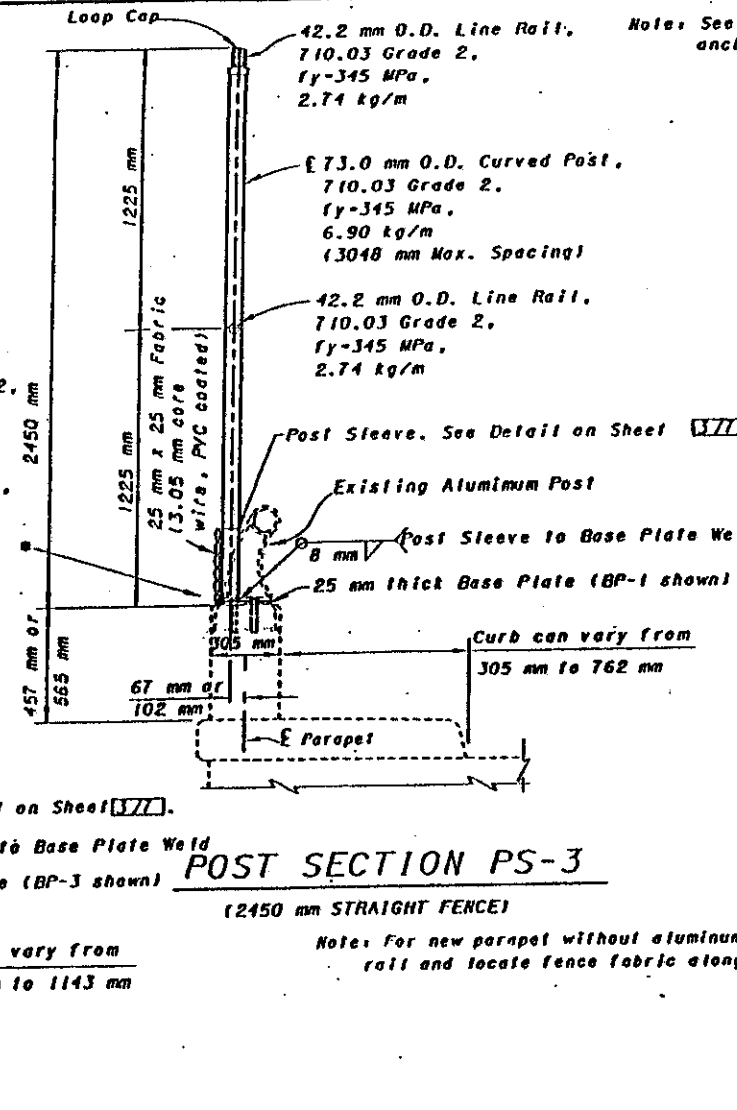
FENCE DETAILS AT TYPICAL LIGHT POLE PILASTER

(EXISTING ALUMINUM RAIL(S) NOT SHOWN)



POST SECTION PS-2

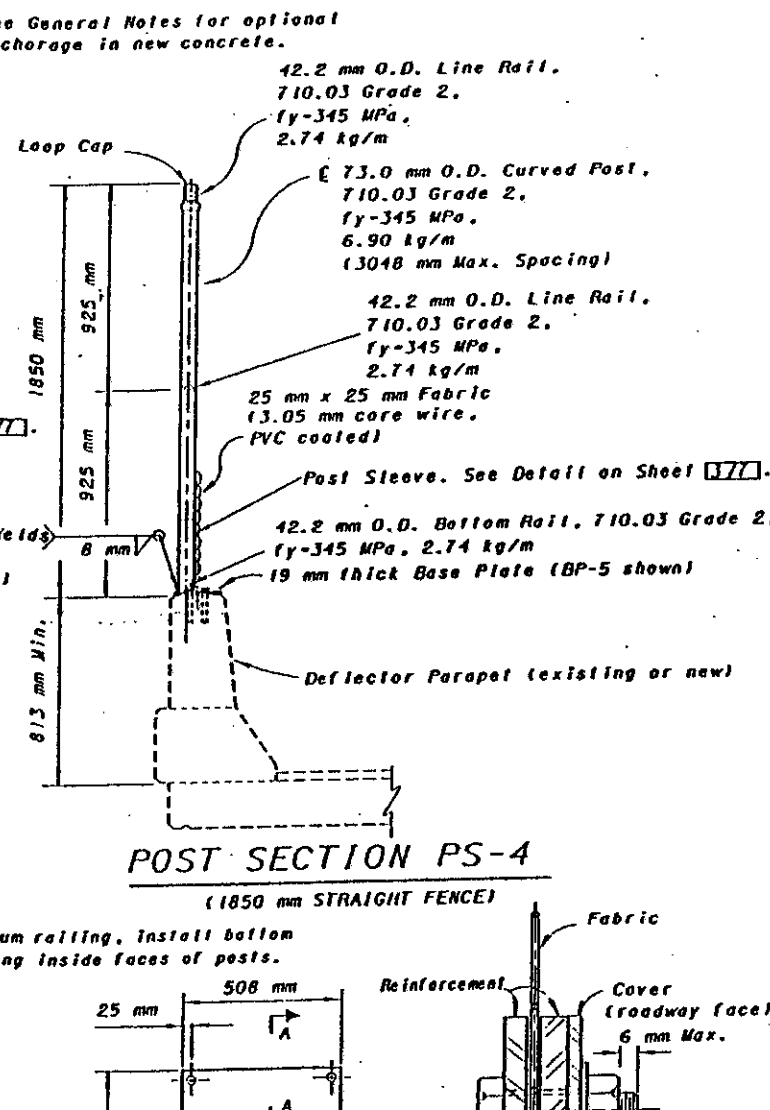
(3050 mm CURVED FENCE)



POST SECTION PS-3

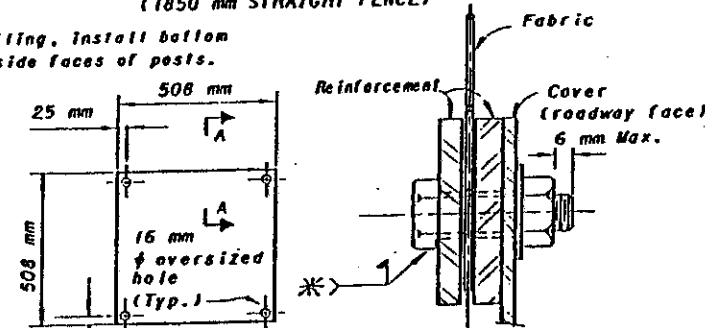
(2450 mm STRAIGHT FENCE)

Note: For new parapet without aluminum railing, install bottom rail and locate fence fabric along inside faces of posts.



POST SECTION PS-4

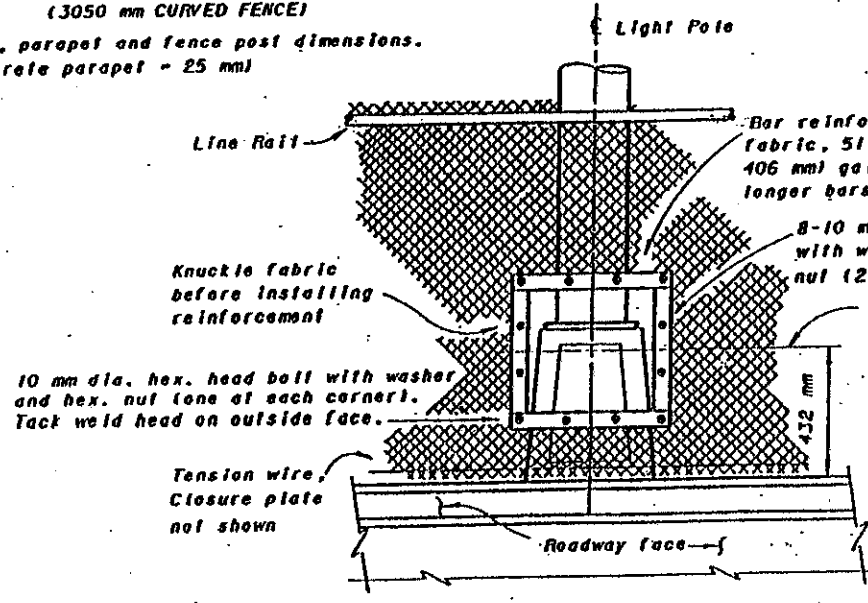
(1850 mm STRAIGHT FENCE)



SECTION A-A

(Showing corner ball)

ACCESS COVER



ACCESS OPENING AT LIGHT POLE

(COVER NOT SHOWN)

Note: See General Notes for optional anchorage in new concrete.

DESIGN AGENCY: BUREAU OF BRIDGES AND STRUCTURAL DESIGN
 STATE OF OHIO DEPARTMENT OF TRANSPORTATION
 PROJECT NO. 2-20-95
 DRAWING NO. VPF-1-50M
 CHECKED: RLD WFF/LMW
 PREPARED: JCR
 REVISED: GJ/RJS
 STANDARD DRAWING: VANDAL PROTECTION FENCE POST SECTIONS AND DETAILS
 DATE: 5/7