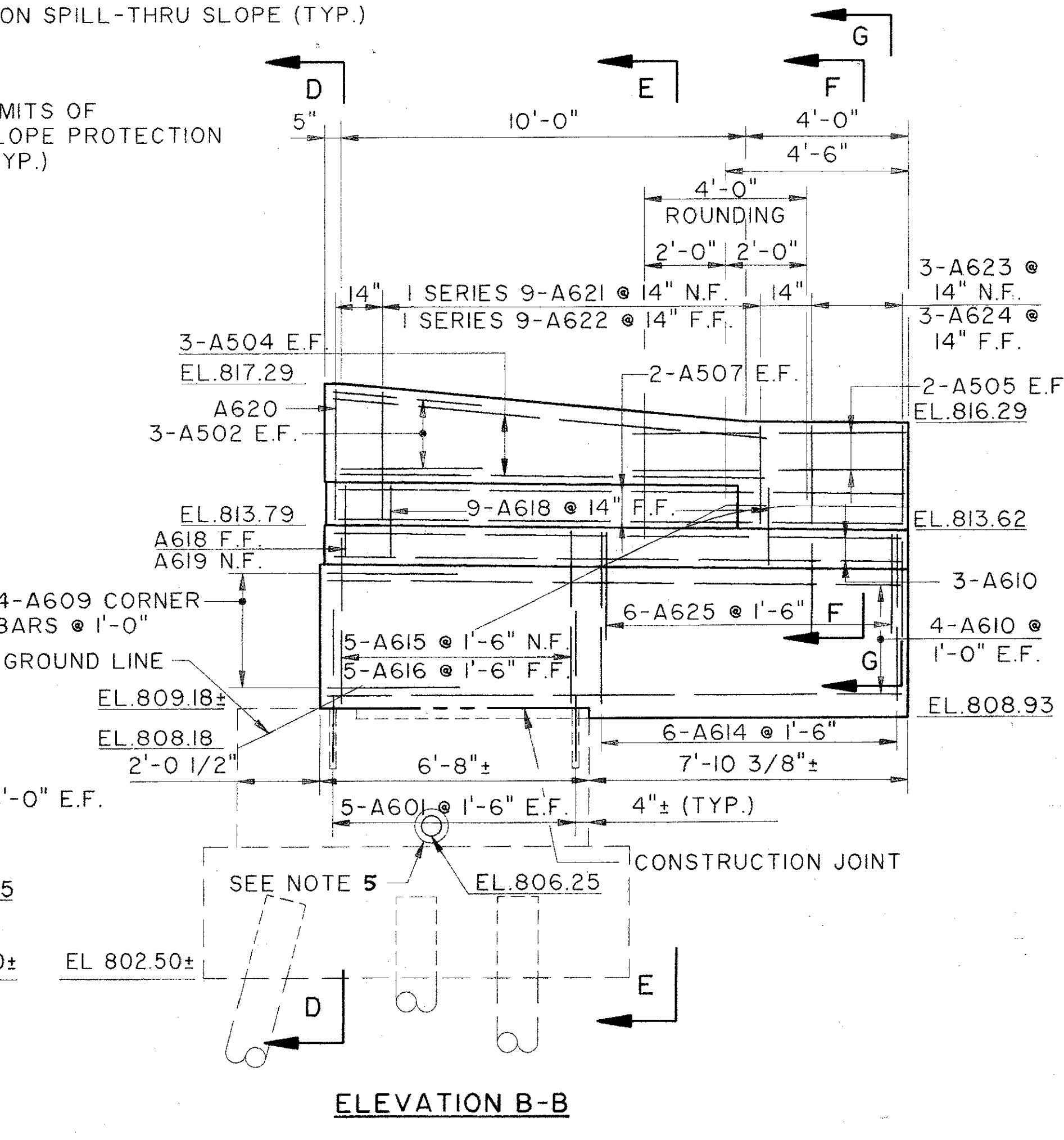
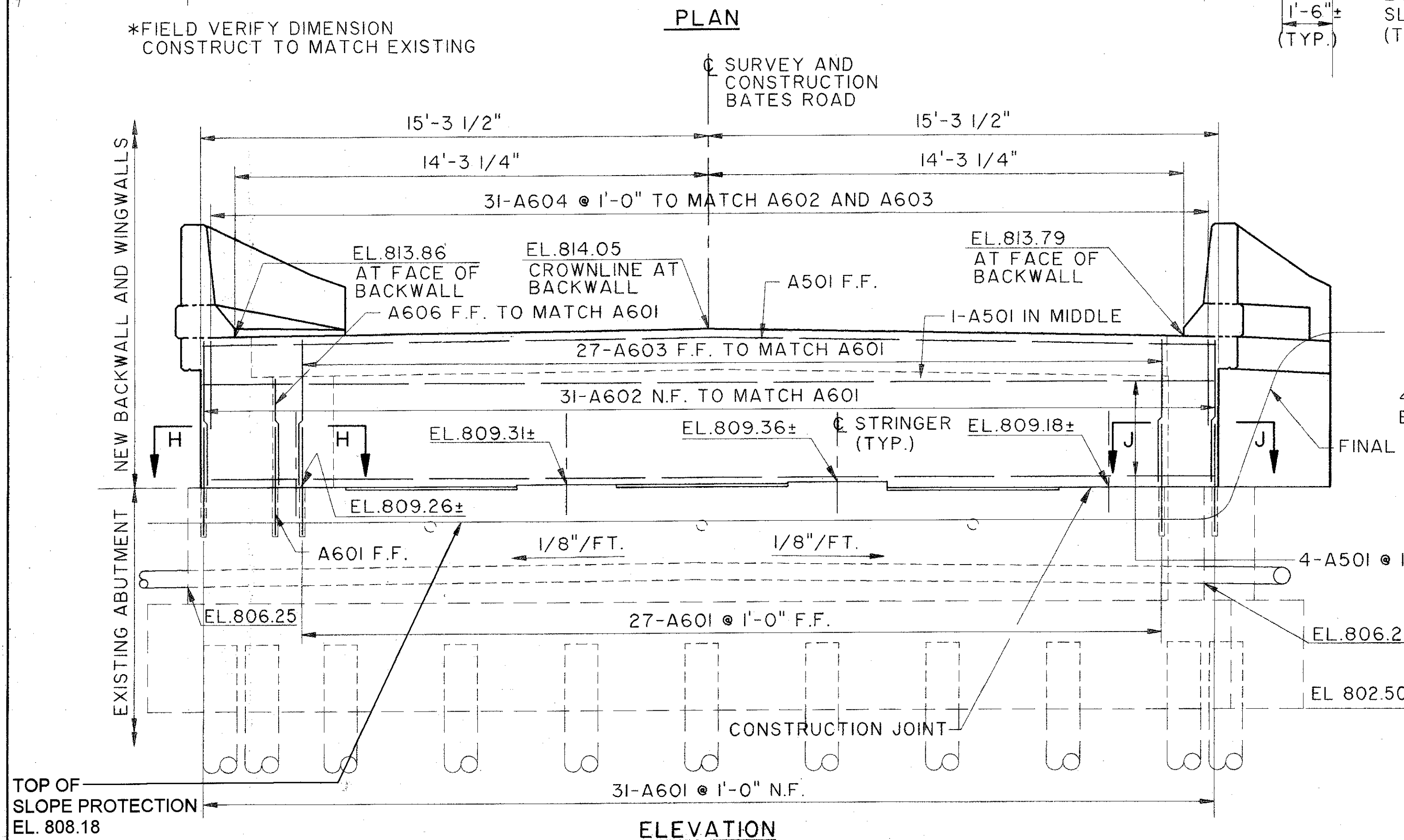
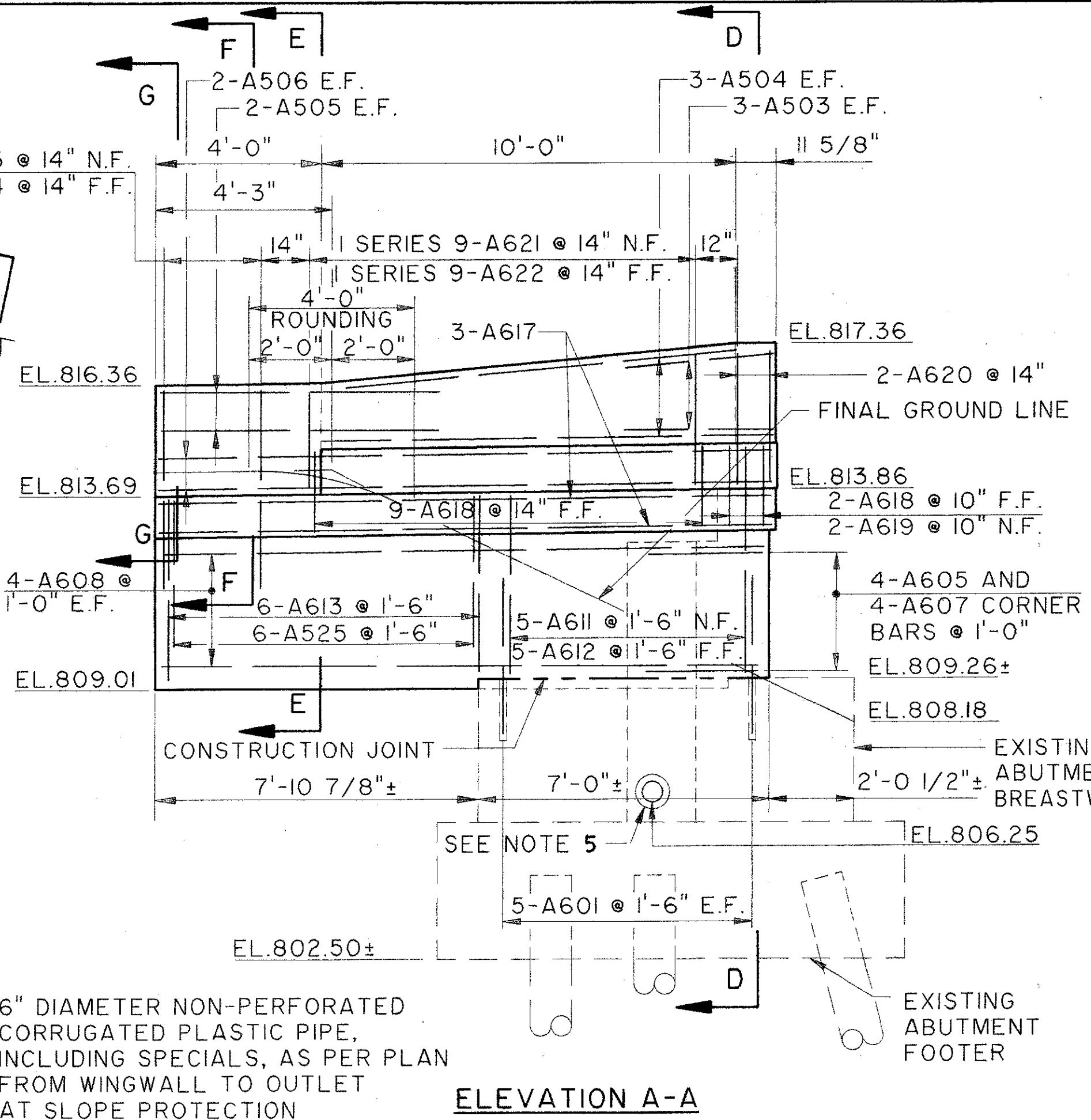
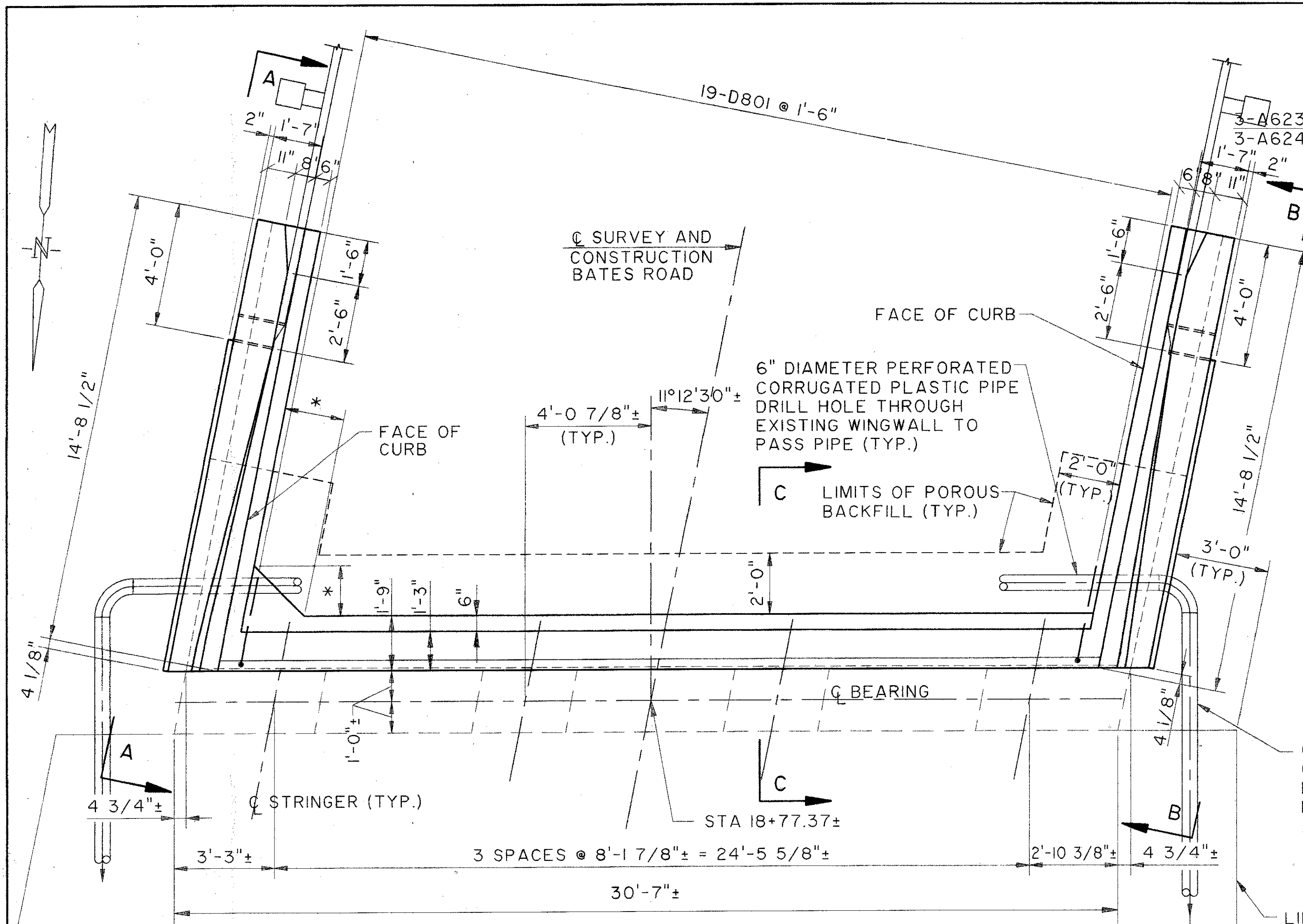


NOTES:

- BACKWALL CONCRETE: IN ADDITION TO THE PROVISIONS OF 511.08, BACKWALL CONCRETE ABOVE THE OPTIONAL CONSTRUCTION JOINT AT THE APPROACH SLAB SEAT SHALL NOT BE PLACED UNTIL AFTER THE DECK CONCRETE IN THE SPAN ADJACENT TO THE ABUTMENT HAS BEEN PLACED.
- INSTALLATION OF SEAL: DURING INSTALLATION OF THE SUPPORT/ARMOR FOR THE SUPERSTRUCTURE SIDE OF THE EXPANSION JOINT SEAL, THE SEATING OF BEAMS ON BEARINGS SHALL BE CAREFULLY OBSERVED TO ASSURE THAT POSITIVE BEARING IS MAINTAINED. PROPER VERTICAL FIT OF THE SUPPORT/ARMOR ON THE BEAMS SHALL BE ACHIEVED BY POSITIONING OF THE BEVEL FILL PLATES RATHER THAN BY CLAMPING FORCE.
- ALL REINFORCING STEEL FOR REAR ABUTMENT SHALL BE PREFIXED "RA".
- DOWEL HOLES SHALL BE LOCATED TO MISS EXISTING REBAR AND WEEPHOLES.
- THE COST OF DRILLING HOLES IN THE EXISTING WINGWALL AND PATCHING AFTER THE ABUTMENT DRAIN INSTALLATION SHALL BE INCLUDED WITH ITEM 518 6" NON-PERFORATED CORRUGATED PLASTIC PIPE, INCLUDING SPECIALS, AS PER PLAN.
- FOR ABUTMENT AND WINGWALL SECTIONS SEE SHEET 46/52.
- ABBREVIATIONS:
E.F. = EACH FACE
N.F. = NEAR FACE
F.F. = FAR FACE
@ = AT
TYP. = TYPICAL
- FOR SECTION H-H AND J-J SEE SHEET 46/52.
- ALL REINFORCING STEEL FOR REAR ABUTMENT SHALL BE PREFIXED "RA".
- FOR CONNECTION DETAILS OF BRIDGE TERMINAL ASSEMBLY TYPE I AT PARAPET ENDS SEE STANDARD CONSTRUCTION DRAWING GR-3.1M.



THE OSBORN ENGINEERING COMPANY 44/52
CONSULTING ENGINEERS
CLEVELAND, OHIO 44114

REAR ABUTMENT DETAILS
BRIDGE NO. LAK-90-2776
BATES ROAD OVER I-90

DESIGNED	DRAWN	TRACED	CHECKED	REVIEWED	DATE	OHIO
LYH	BFG		JRS	GA	2/94	ODOT 52499

File Name: K:\01\02007\0108\STRUCT\01859757
 Plot Scale: 1/8" = 1'-0"
 Drawn By/Date: JN / 04-27-94 (15:35)

BATES ROAD