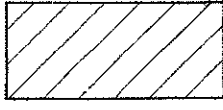
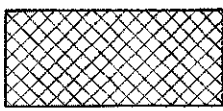
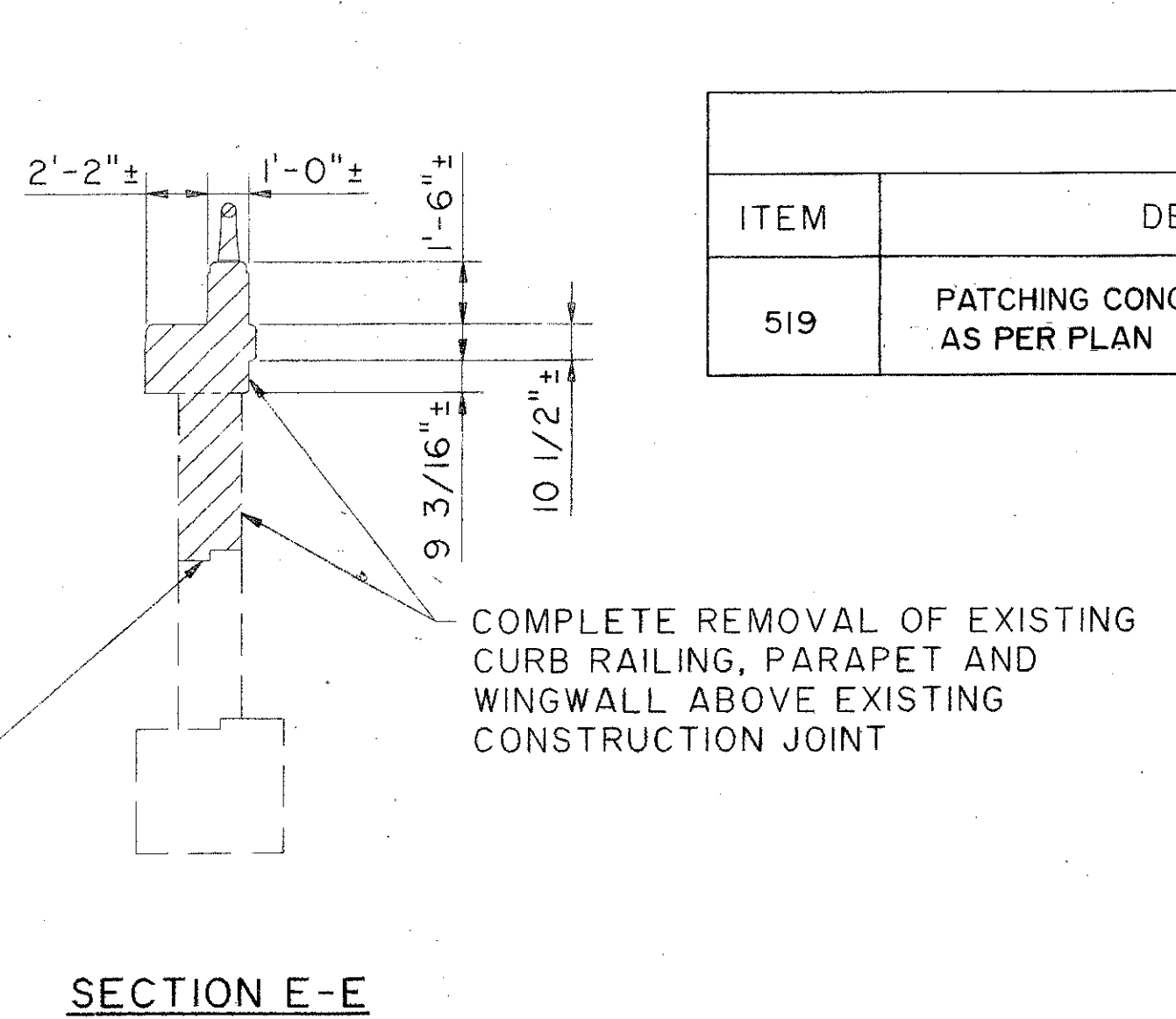
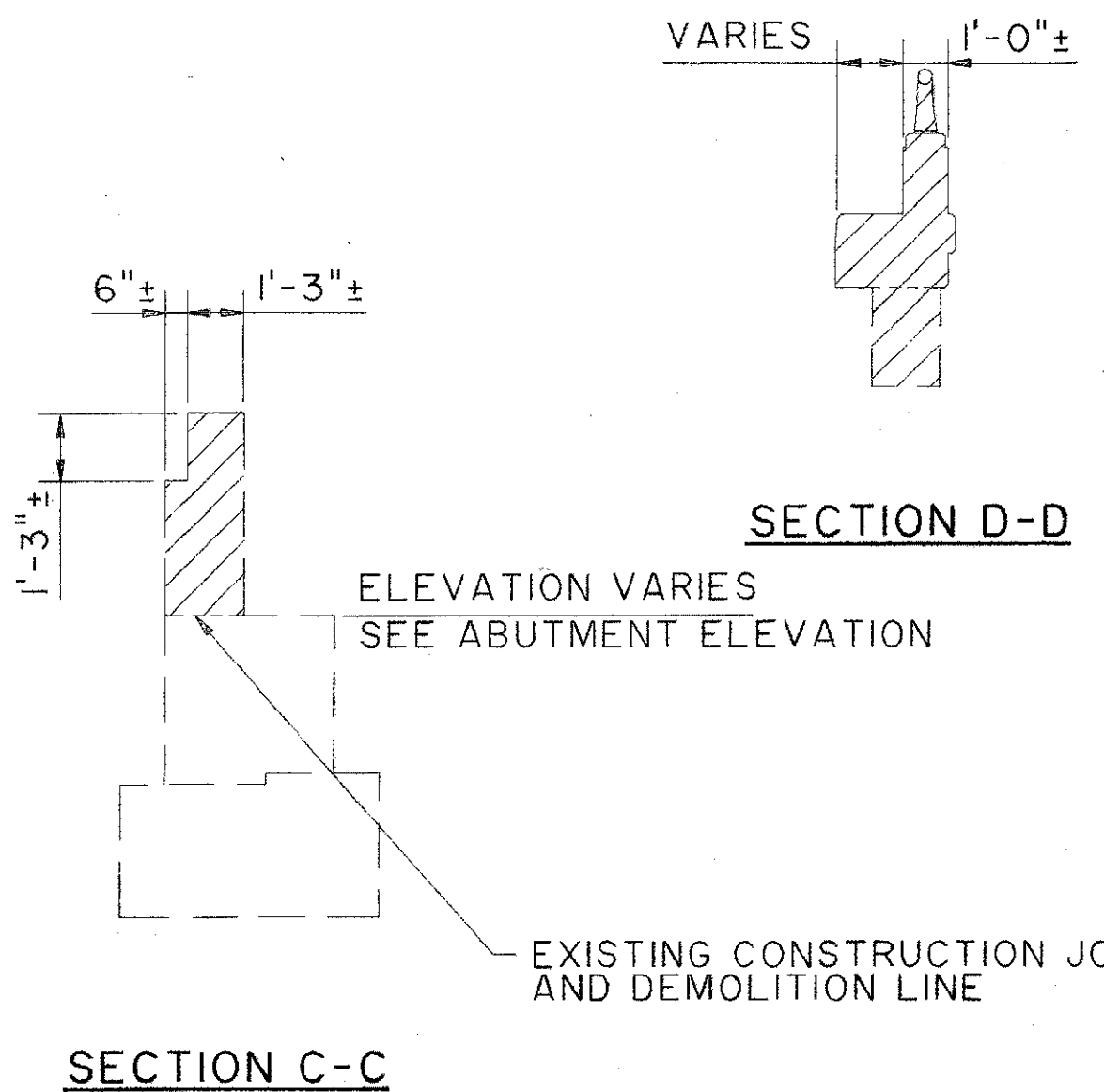
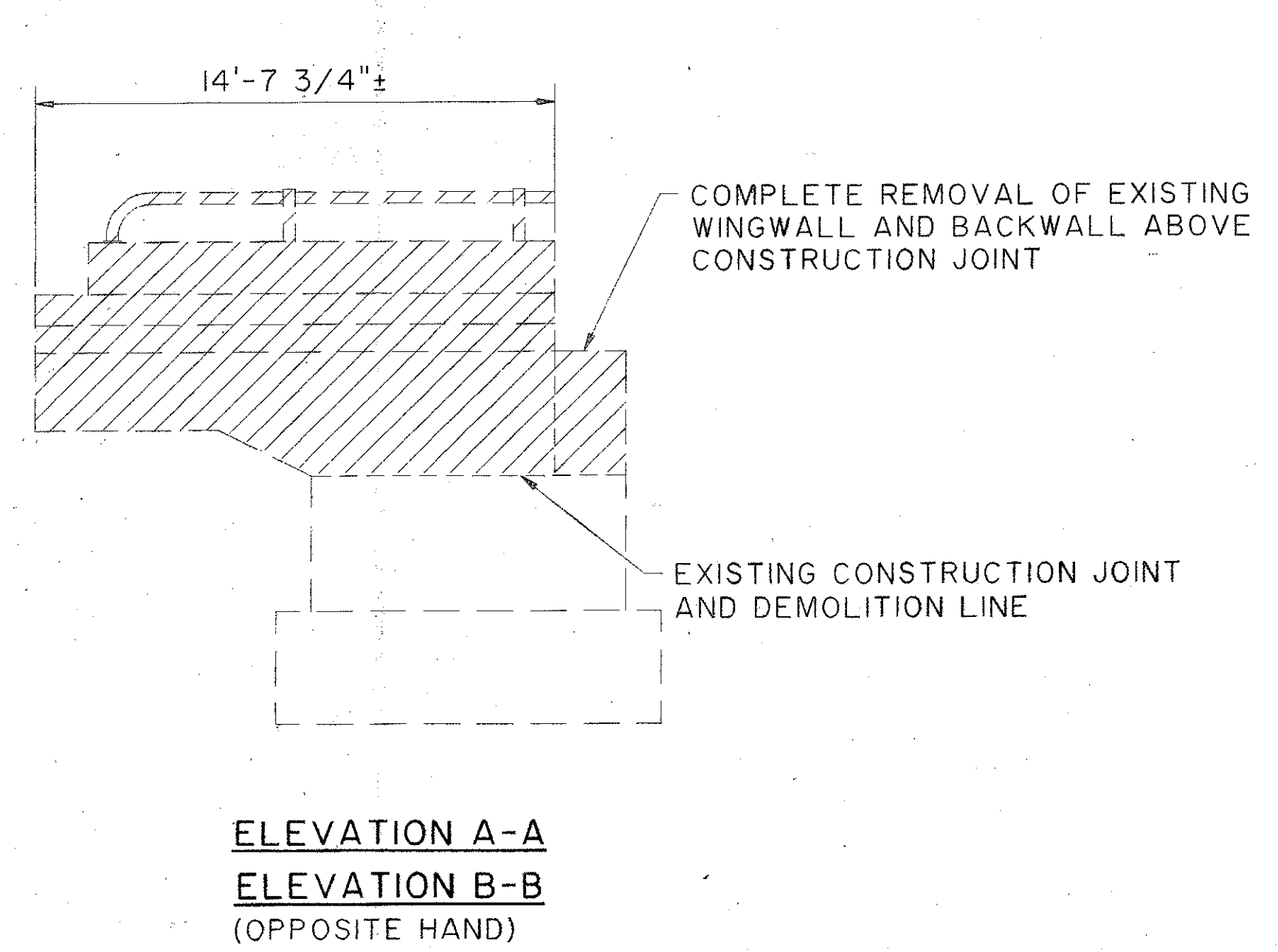
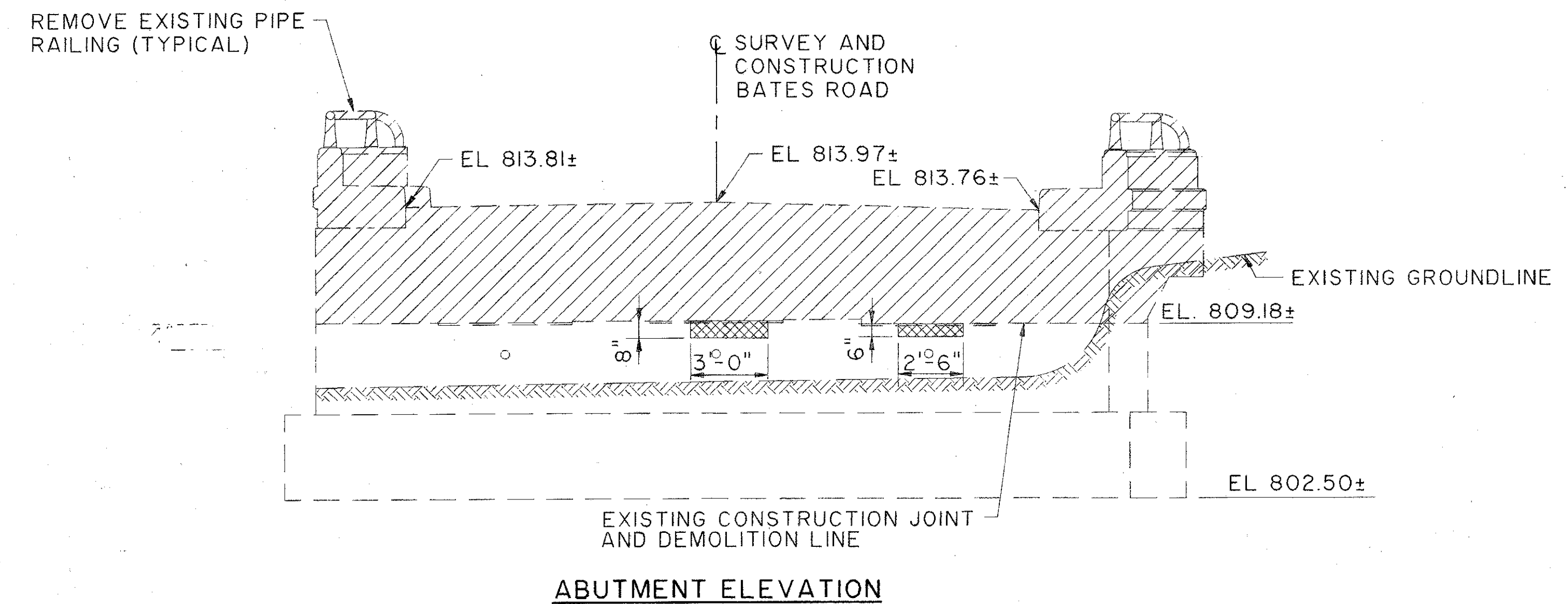
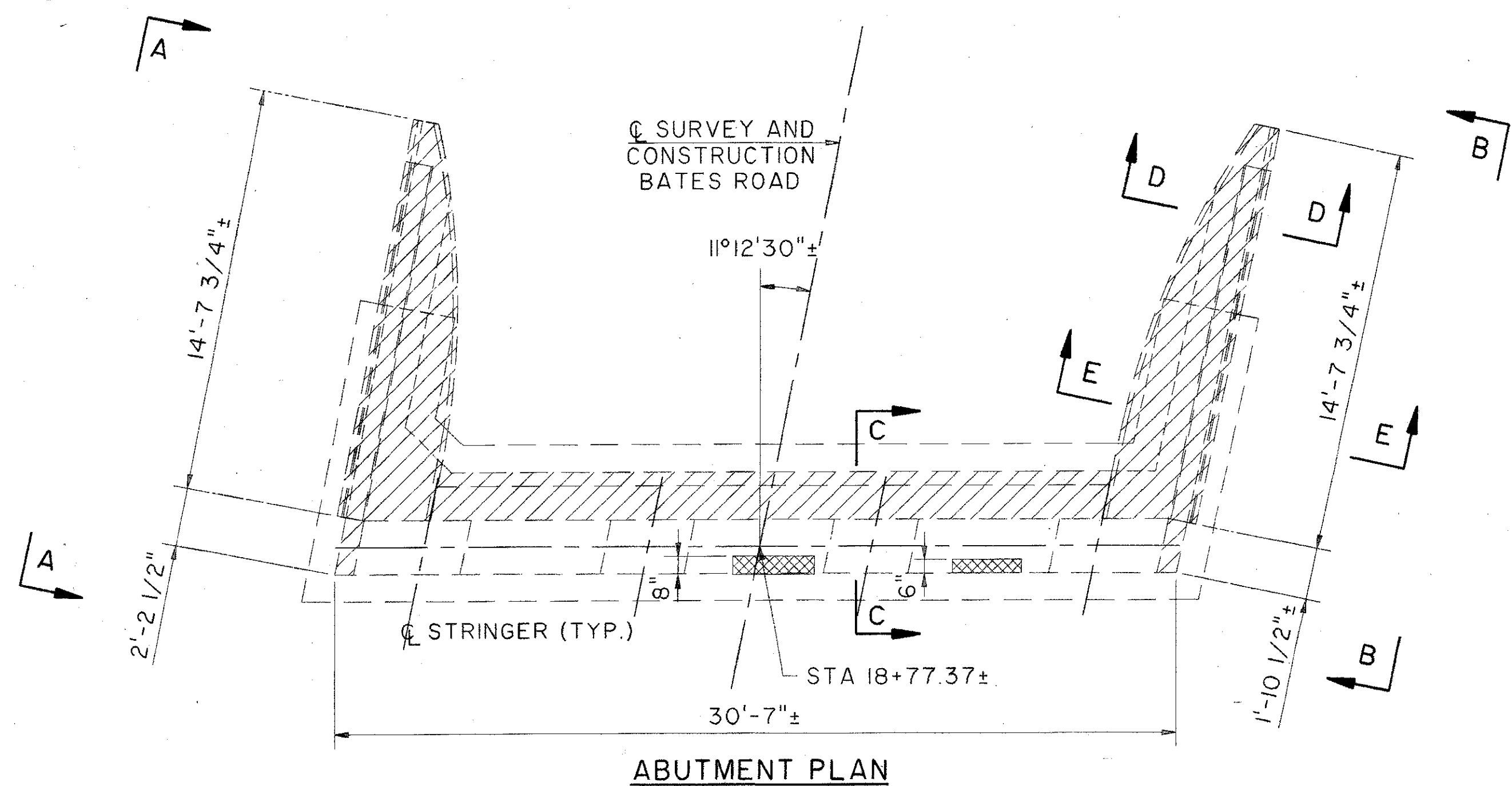


LEGEND

-  ITEM 202, PORTIONS OF STRUCTURE REMOVED, AS PER PLAN
-  ITEM 519, PATCHING CONCRETE STRUCTURES, AS PER PLAN

NOTES:

1. CONSTRUCTION JOINT PREPARATION: REMOVE CONCRETE TO A ROUGH SURFACE. PRIOR TO CONCRETE PLACEMENT, ABRASIVELY CLEAN JOINT SURFACE TO REMOVE LOOSE DISINTEGRATED CONCRETE THEN, THE JOINT SURFACE AND ANY EXPOSED REINFORCING STEEL SHALL BE THOROUGHLY CLEANED OF ALL DIRT, DUST, OR OTHER FOREIGN MATERIAL BY THE USE OF WATER, AIR UNDER PRESSURE, OR OTHER METHODS THAT PRODUCE SATISFACTORY RESULTS. CONCRETE BONDING SURFACES SHALL BE WET WITHOUT FREE WATER AS CONCRETE IS PLACED.
2. SUBSTRUCTURE CONCRETE REMOVAL SHALL BE BY MEANS OF APPROVED PNEUMATIC HAMMERS EMPLOYING POINTED AND BLUNT CHISEL TOOLS. HYDRAULIC HOE-RAM TYPE HAMMERS WILL NOT BE PERMITTED. THE WEIGHT OF THE HAMMER SHALL NOT BE MORE THAN 35 POUNDS FOR REMOVAL WITHIN 18 INCHES OF PORTIONS TO BE PRESERVED. OUTSIDE THE 18 INCH LIMIT A HAMMER HEAVIER THAN 35 POUNDS, BUT NOT TO EXCEED 90 POUNDS, MAY BE USED AT THE APPROVAL OF THE ENGINEER. PNEUMATIC HAMMERS SHALL NOT BE PLACED IN DIRECT CONTACT WITH REINFORCING STEEL THAT IS TO BE RETAINED IN THE REBUILT STRUCTURE.
3. FOR NEW BACKWALL AND CONCRETE PARAPET REPLACEMENT DETAILS, SEE SHEETS 44/52 AND 46/52.
4. ALL ELEVATIONS SHOWN WITH REFERENCE TO THE EXISTING ABUTMENTS ARE APPROXIMATE.



ESTIMATED QUANTITIES			
ITEM	DESCRIPTION	QUANTITY	
		MEASURED	ESTIMATED
519	PATCHING CONCRETE STRUCTURES, AS PER PLAN	7 SF	21 SF

THE OSBORN ENGINEERING COMPANY 42/52
CONSULTING ENGINEERS
CLEVELAND, OHIO 44114

REAR ABUTMENT DEMOLITION AND REPAIRS
BRIDGE NO. LAK-90-2776
BATES ROAD OVER I-90

DESIGNED	DRAWN	TRACED	CHECKED	REVIEWED	DATE	REVISED
LYH	BFG		JRS	GA	2/94	6/17/94

File Name: K:\001\0007\0185\STRUCT\0185031
 Plot Scale: 1"=48'
 Drawn By/Date: Brc / 05-15-94 (10:3)

BATES ROAD