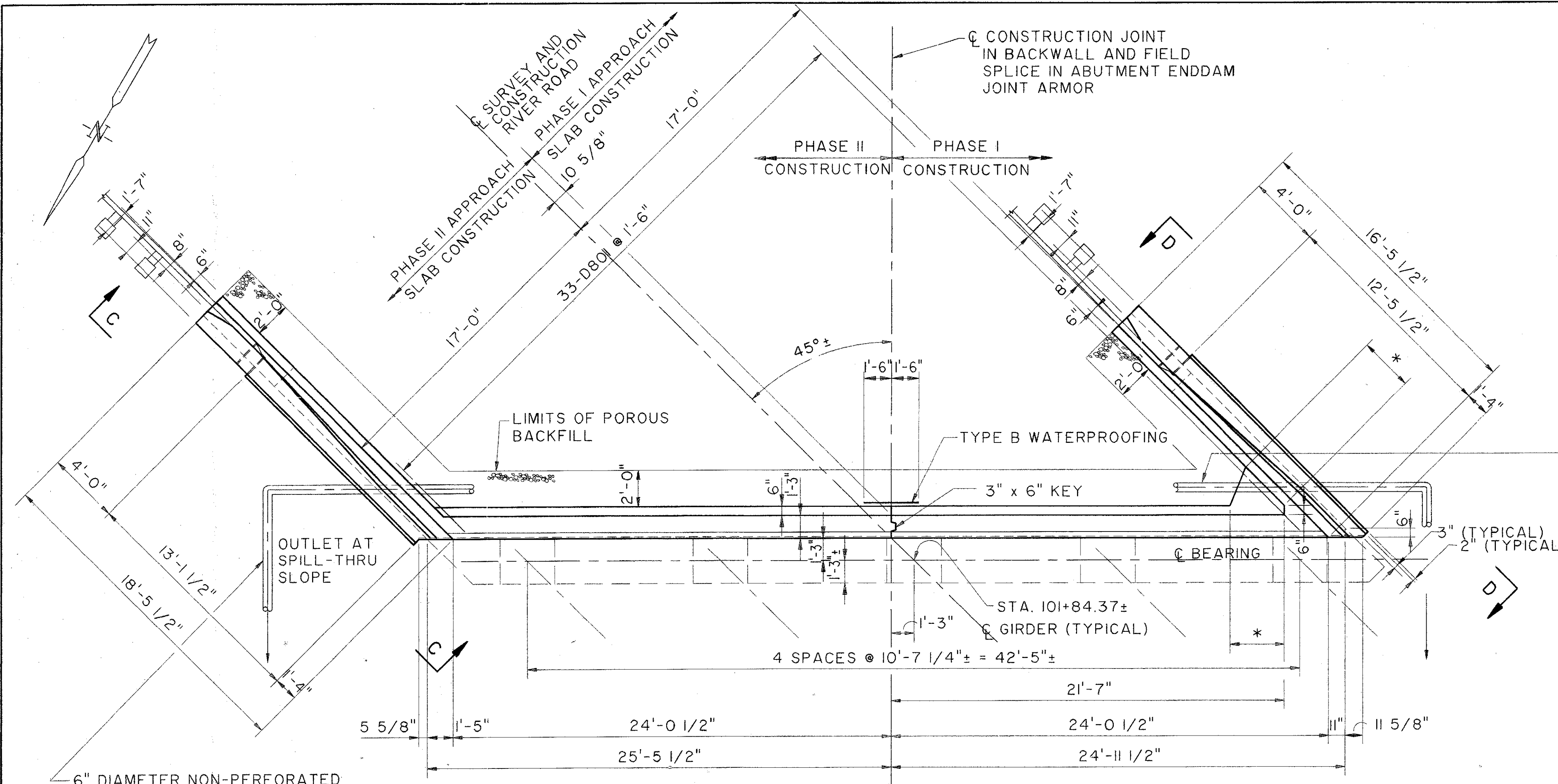


NOTES:

1. ALL REINFORCING STEEL FOR FORWARD ABUTMENT SHALL BE PREFIXED "FA".
2. FOR ADDITIONAL NOTES SEE SHEET 26/52.
3. FOR ABUTMENT AND WINGWALL SECTIONS AND ELEVATIONS SEE SHEETS 29/52 AND 30/52.

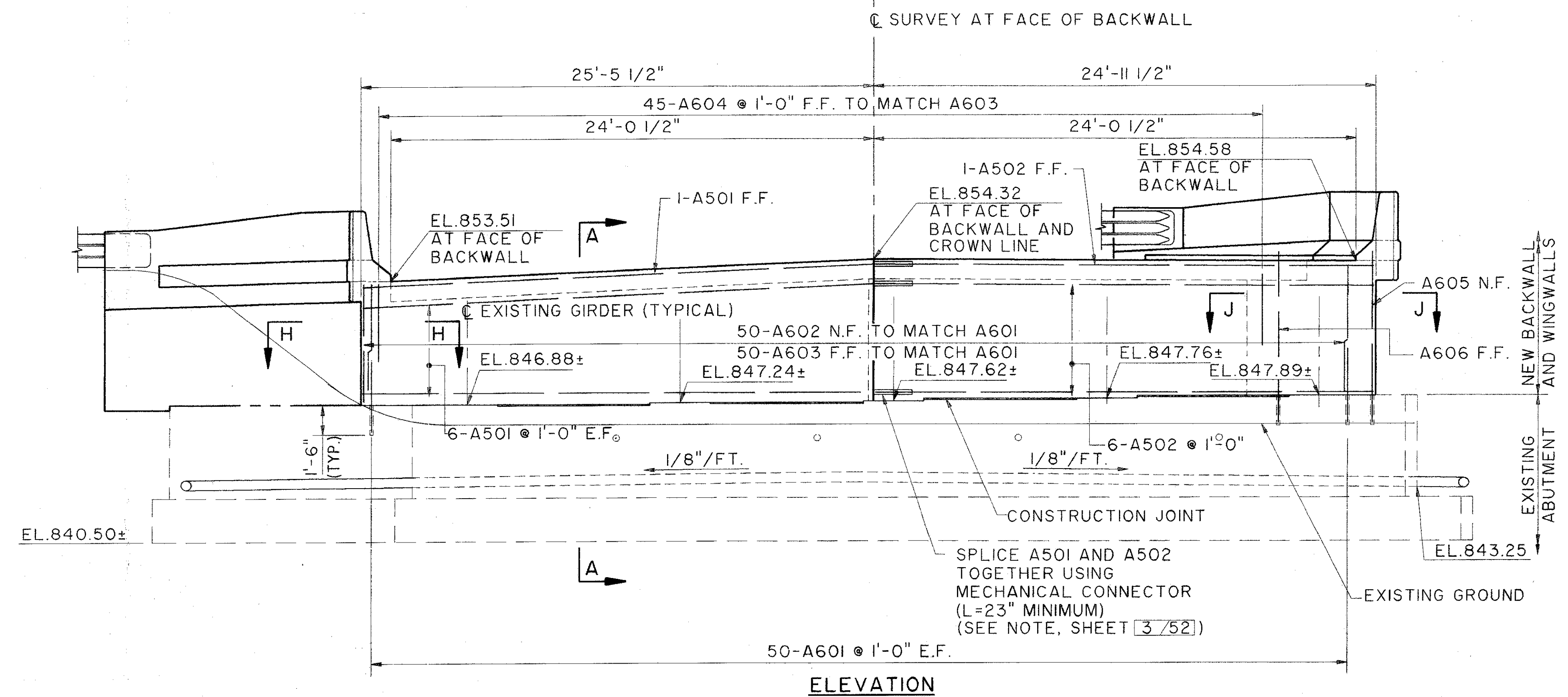


6" DIAMETER PERFORATED CORRUGATED PLASTIC PIPE BETWEEN WINGWALLS DRILL HOLE THROUGH EXISTING WINGWALL TO PASS PIPE. (TYPICAL)

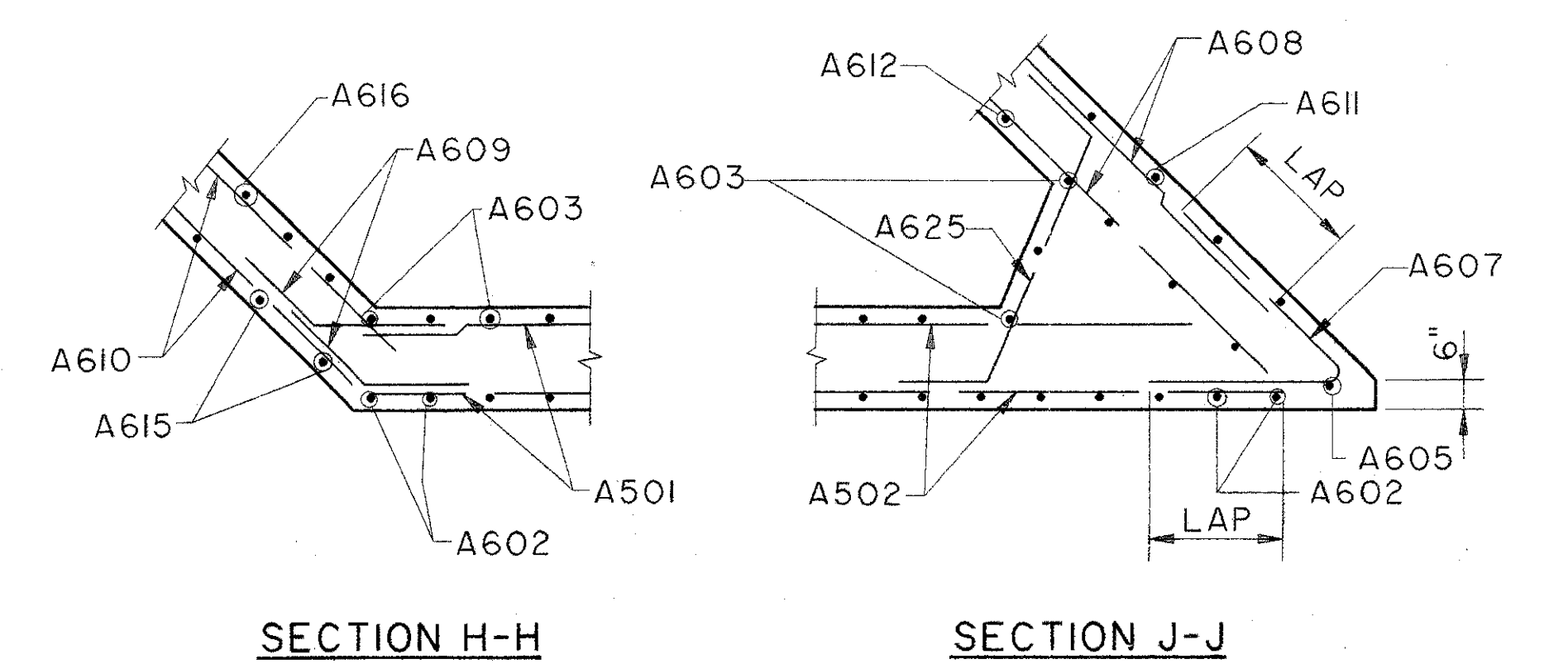
6" DIAMETER NON-PERFORATED CORRUGATED PLASTIC PIPE INCLUDING SPECIALS, FROM WINGWALL TO OUTLET AT SPILL-THRU SLOPE. (TYPICAL BOTH ENDS)

*FIELD VERIFY EXISTING DIMENSION

PLAN



ELEVATION



SECTION H-H

SECTION J-J

Electronic: K:\A\1\0001\0186\STRUCT\01855737
 Drawn By: JAC / 04-27-94 (150)
 Date: 04/27/94

THE OSBORN ENGINEERING COMPANY 28/52					
CONSULTING ENGINEERS CLEVELAND, OHIO 44114					
FORWARD ABUTMENT					
BRIDGE NO. LAK-90-2515 RIVER ROAD OVER I-90					
LAKE COUNTY					OHIO
DESIGNED	DRAWN	TRACED	CHECKED	REVIEWED	DATE
LYH	BFG		JRS	GA	2/94
					REVISED

RIVER ROAD