

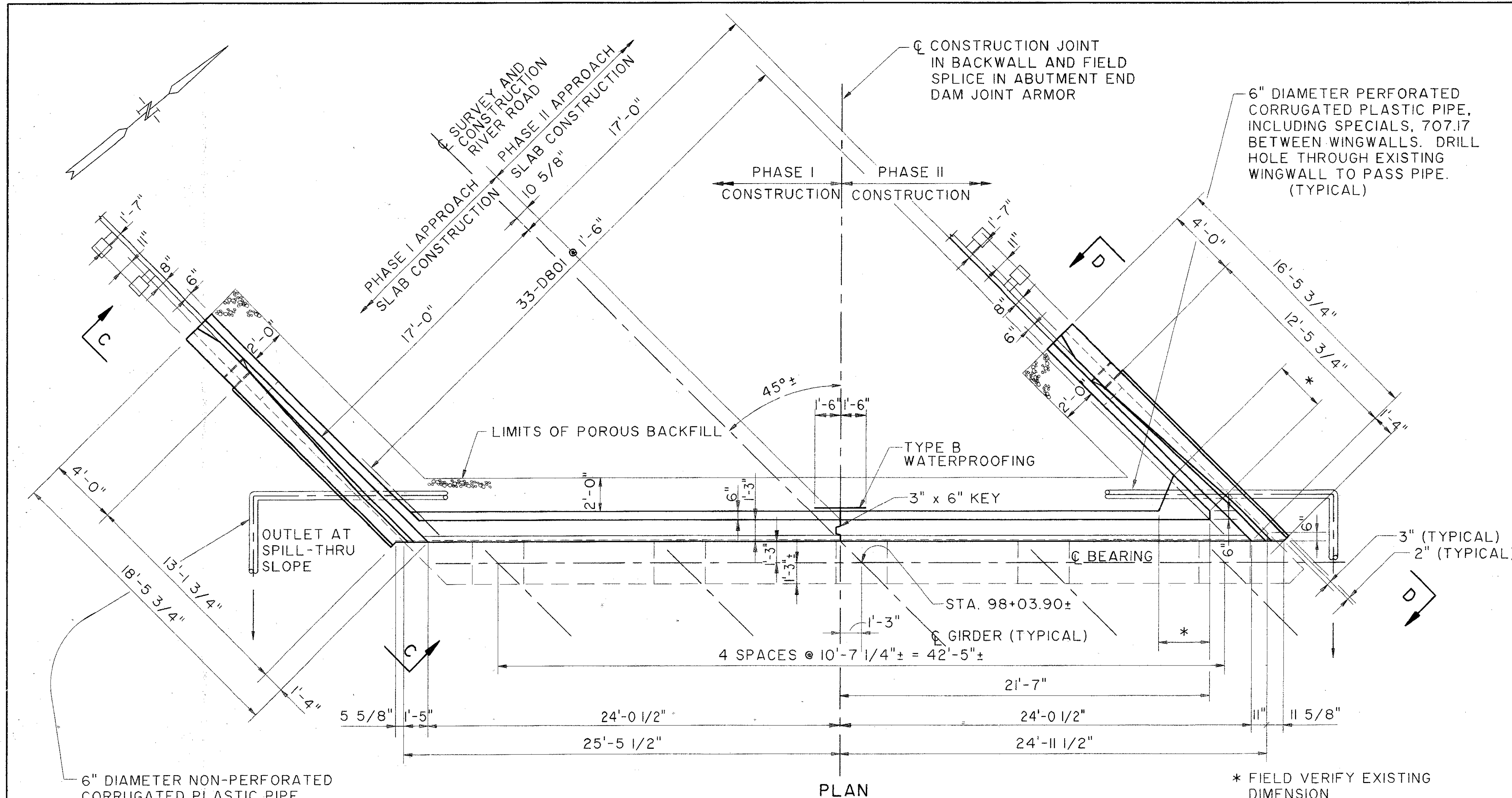
LAKE COUNTY
LAK-90-17.42/25.15/27.76

NOTES:

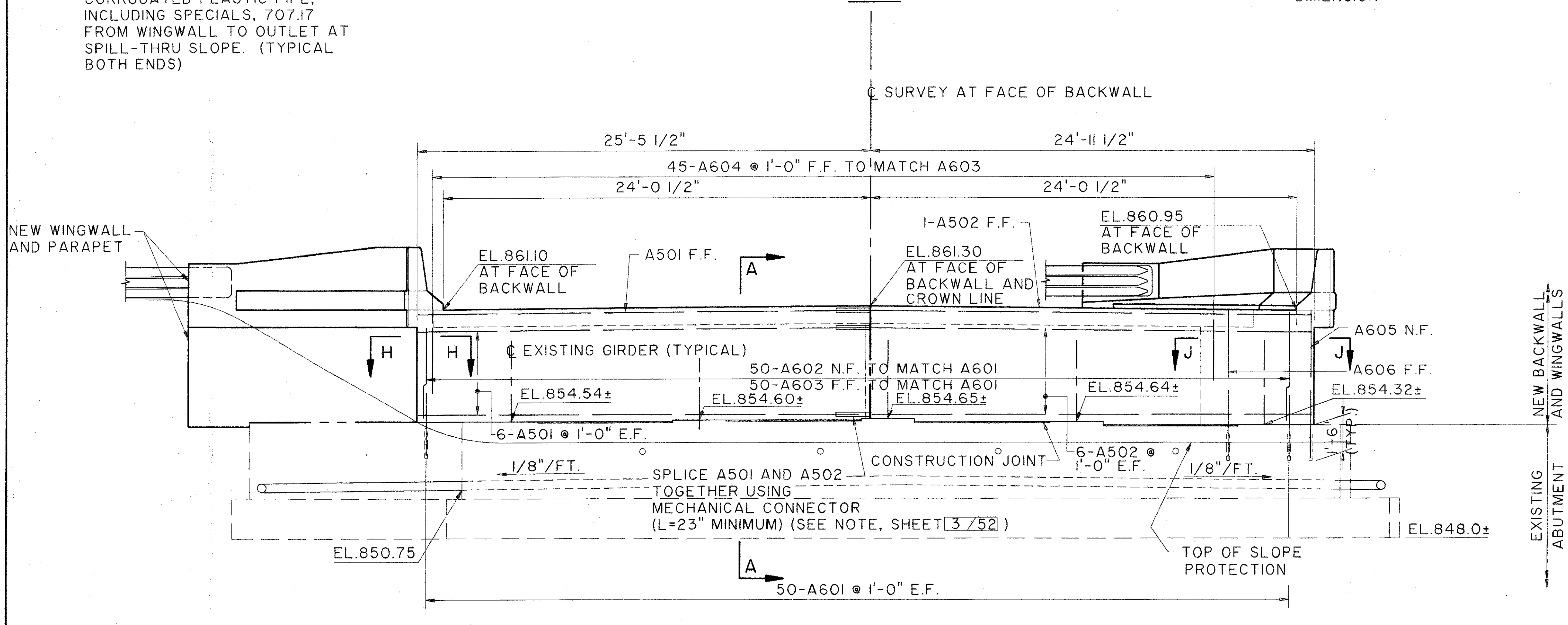
- BACKWALL CONCRETE: IN ADDITION TO THE PROVISIONS OF 511.08, BACKWALL CONCRETE ABOVE THE OPTIONAL CONSTRUCTION JOINT AT THE APPROACH SLAB SEAT SHALL NOT BE PLACED UNTIL AFTER THE DECK CONCRETE IN THE SPAN ADJACENT TO THE ABUTMENT HAS BEEN PLACED.
- THE CONSTRUCTION OF THE ABUTMENTS SHALL BE IN STAGES. FOR DETAILED DESCRIPTION OF STAGE CONSTRUCTION SEE SHEET 36/52.
- ALL REINFORCING STEEL FOR REAR ABUTMENT SHALL BE PREFIXED "RA".
- DOWEL HOLES SHALL BE LOCATED TO MISS EXISTING REBAR AND WEEPHOLES.
- THE COST OF DRILLING HOLES IN THE EXISTING WINGWALL AND PATCHING AFTER THE ABUTMENT DRAIN INSTALLATION SHALL BE INCLUDED WITH ITEM 518 6" NON-PERFORATED CORRUGATED PLASTIC PIPE, INCLUDING SPECIALS, AS PER PLAN.
- FOR ABUTMENT AND WINGWALL SECTIONS AND ELEVATIONS SEE SHEETS 27/52 AND 30/52.
- TYPE B WATERPROOFING SHALL EXTEND FROM LOWER CONSTRUCTION JOINT TO APPROACH SLAB SEAT.
- FOR CONNECTION DETAILS OF BRIDGE TERMINAL ASSEMBLY TYPE I AT PARAPET ENDS SEE STANDARD CONSTRUCTION DRAWING GR-3.1M.

ABBREVIATIONS

- E.F. EACH FACE
N.F. NEAR FACE
F.F. FAR FACE
EL. ELEVATION
⊙ SPACED AT



PLAN



ELEVATION

THE OSBORN ENGINEERING COMPANY 26/52
CONSULTING ENGINEERS
CLEVELAND, OHIO 44114

REAR ABUTMENT
BRIDGE NO. LAK-90-2515
RIVER ROAD OVER I-90

DESIGNED	DRAWN	TRACED	CHECKED	REVIEWED	DATE	OHIO
LYH	BFG		JRS	GA	2/94	ODOT 52489

File: P:\9001\9001\9001\STRUCT\01853735
 Plot: 01853735.dwg
 Drawn By: Date: 2/94 / 04-27-94 (14-4)

RIVER ROAD