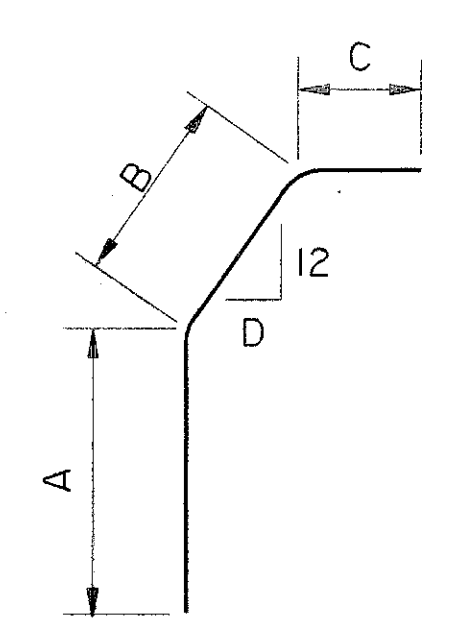
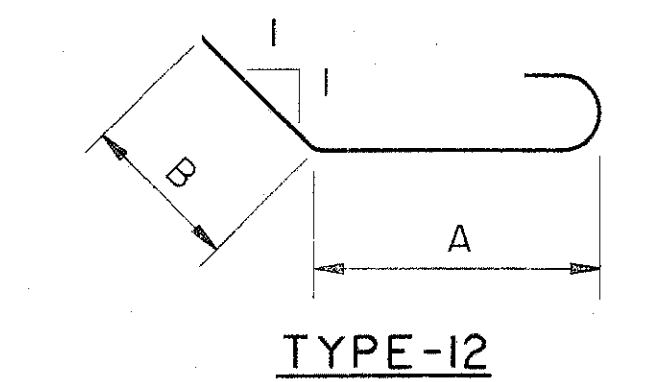
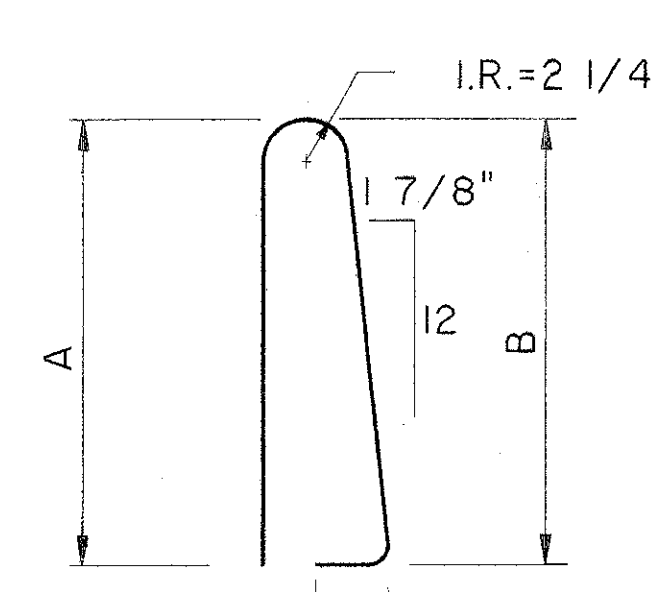
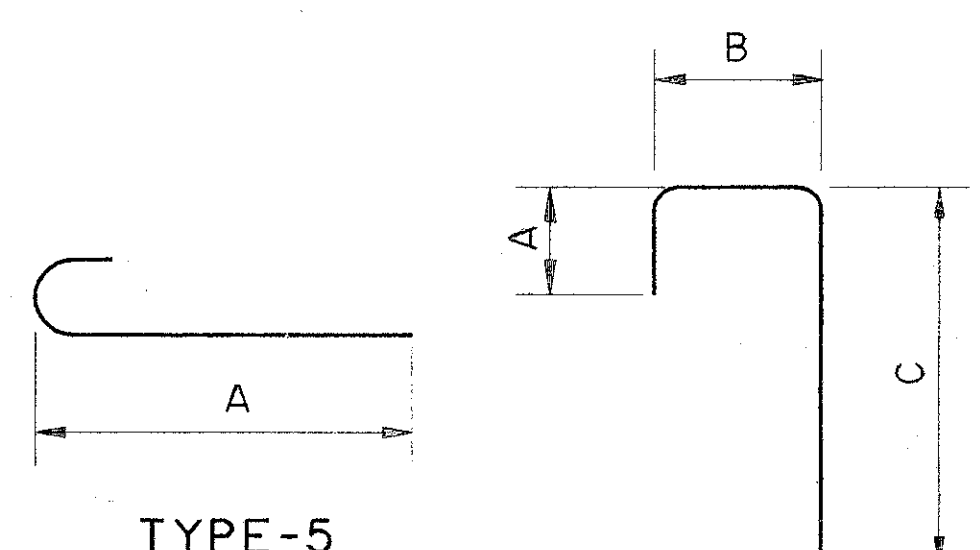
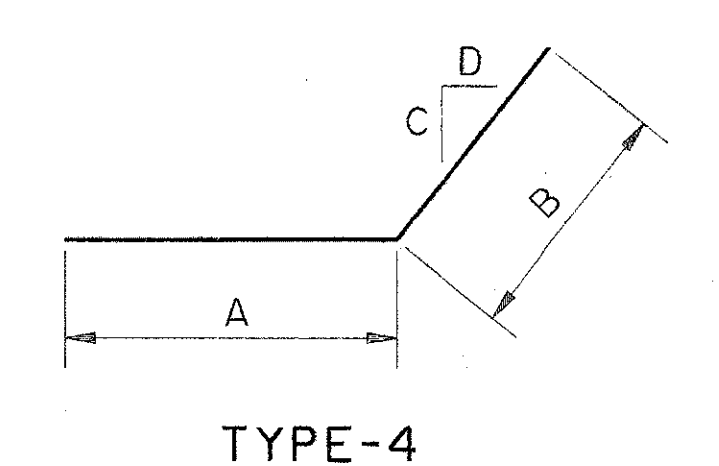
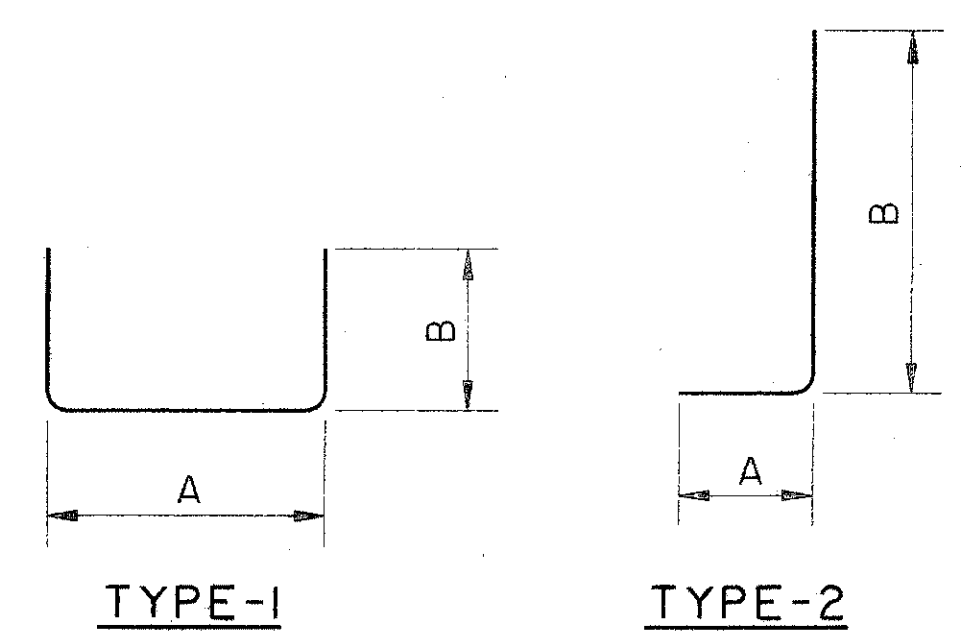


MARK	NO.	LENGTH	TYPE	SERIES INCR.	WEIGHT	A	B	C	D
REAR ABUTMENT									
RA501*	7	27'-10"	STR		203				
RA502*	8	27'-0"	STR		245				
RA503	12	7'-8"	STR		96				
RA504	12	10'-0"	STR		125				
RA505	8	5'-10"	STR		49				
RA506	4	17'-3"	STR		72				
RA507	4	19'-4"	STR		81				
RA508*	7	28'-10"	STR		211				
RA509*	6	25'-0"	STR		156				
RA601	127	4'-6"	STR		858				
RA602	55	9'-4"	6		771	2'-9"	11"	6'-0"	
RA603	49	5'-1"	STR		374				
RA604	55	5'-1"	1		420	1'-5"	2'-0"		
RA605	1	7'-11"	STR		12				
RA606	3	6'-0"	STR		27				
RA607	6	6'-0"	14		54	3'-0"	3'-0"	12"	12"
RA608	12	15'-3"	STR		275				
RA609	6	6'-0"	4		54	3'-0"	3'-0"		
RA610	12	19'-8"	STR		334				
RA611	5	6'-2"	STR		45				
RA612	4	8'-0"	2		48	1'-9"	6'-5"		
RA613	7	12'-10"	1		135	1'-2"	6'-0"		
RA614	5	13'-2"	1		99	1'-2"	6'-2"		
RA615	9	6'-1"	STR		82				
RA616	9	7'-11"	2		107	1'-9"	6'-4"		
RA617	6	17'-3"	STR		155				
RA618	28	3'-0"	7		126	1'-4"	10"	10"	8 1/2"
RA619	10	3'-5"	2		51	1'-9"	1'-10"		
RA620	10	7'-0"	11		105	3'-0"	3'-3"	8 1/2"	
RA621	2 SERIES OF 9	5'-7" TO 4'-10"	2	1 1/8"	141	1'-9"	4'-0" TO 3'-3"		
RA622	2 SERIES OF 9	4'-8" TO 3'-11"	5	1 1/8"	115	4'-0" TO 3'-3"			
RA623	6	5'-0"	2		45	1'-9"	3'-5"		
RA624	6	5'-2"	STR		47				
RA625	6	9'-0"	17		81	2'-0"	5'-0"	2'-0"	
RA626	12	5'-1"	2		92	1'-9"	3'-6"		
RA627	6	19'-4"	STR		172				
D801	33	4'-11"	12		433	2'-7"	1'-5"		
TOTAL WEIGHT FOR REAR ABUTMENT					6498				
FORWARD ABUTMENT									
FA501*	8	23'-7"	STR		197				
FA502*	7	23'-11"	STR		175				
FA503	6	5'-1"	STR		32				
FA504	12	10'-0"	STR		125				
FA505	8	5'-10"	STR		49				
FA506	4	16'-9"	STR		70				
FA507	4	20'-0"	STR		83				
FA508*	6	22'-7"	STR		111				
FA509*	7	25'-0"	STR		143				
FA510	6	8'-4"	STR		52				

MARK	NO.	LENGTH	TYPE	SERIES INCR.	WEIGHT	A	B	C	D
FORWARD ABUTMENT									
FA601	118	4'-6"	STR		798				
FA602	48	9'-7"	6		691	2'-9"	11"	6'-3"	
FA603	42	5'-5"	STR		342				
FA604	48	5'-1"	1		366	1'-5"	2'-0"		
FA605	1	7'-11"	STR		12				
FA606	3	5'-3"	STR		24				
FA607	6	4'-0"	14		36	2'-0"	2'-0"		
FA608	12	15'-6"	STR		279				
FA609	6	4'-0"	4		36	3'-0"	3'-0"	12"	12"
FA610	18	20'-0"	STR		541				
FA611	5	6'-1"	STR		46				
FA612	4	7'-11"	2		48	1'-9"	6'-4"		
FA613	6	12'-6"	1		113	1'-2"	5'-10"		
FA614	5	12'-4"	1		93	1'-2"	5'-9"		
FA615	9	6'-4"	STR		85				
FA616	9	8'-2"	2		100	1'-9"	6'-7"		
FA617	6	16'-9"	STR		151				
FA618	27	3'-0"	7		182	1'-4"	10"	10"	8 1/2"
FA619	9	3'-5"	2		46	1'-9"	1'-10"		
FA620	9	7'-0"	11		95	3'-0"	3'-3"	8 1/2"	
FA621	2 SERIES OF 9	5'-7" TO 4'-10"	2	1 1/8"	141	1'-9"	4'-0" TO 3'-3"		
FA622	2 SERIES OF 9	4'-8" TO 3'-11"	5	1 1/8"	115	4'-0" TO 3'-3"			
FA623	6	5'-0"	2		45	1'-9"	3'-5"		
FA624	6	5'-2"	STR		47				
FA625	6	9'-0"	17		81	2'-0"	5'-0"	2'-0"	
FA626	12	5'-1"	2		94	1'-9"	3'-6"		
FA627	6	20'-0"	STR		180				
D801	33	4'-11"	12		433	2'-7"	1'-5"		
TOTAL WEIGHT FOR FORWARD ABUTMENT					6269				

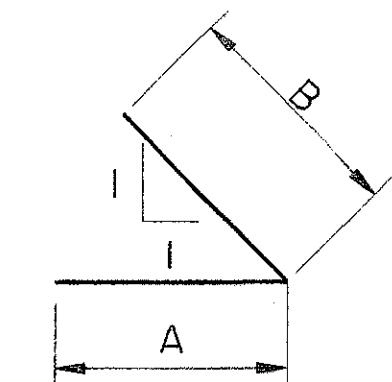
NOTE: BARS DENOTED BY * ARE SPLICED USING MECHANICAL CONNECTORS.

LAKE COUNTY
 LAK-90-17.42/25.15/27.76

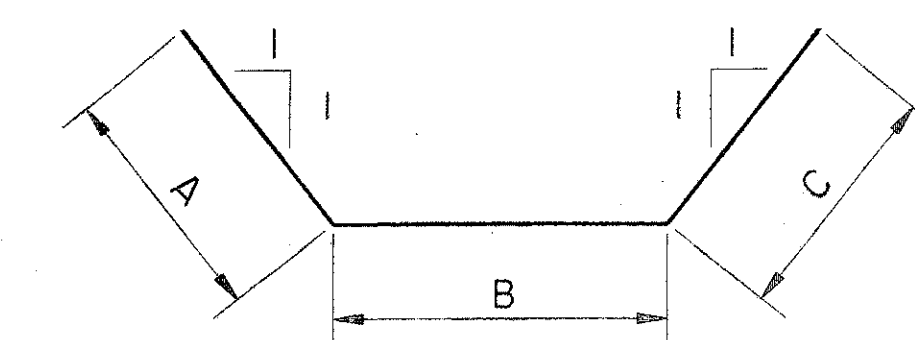


TYPE-7

TYPE-11



TYPE-14



TYPE-17

NOTES:
 I. FOR NOTES SEE SHEET 20/52.

THE OSBORN ENGINEERING COMPANY 19/52
 CONSULTING ENGINEERS
 CLEVELAND, OHIO 44114

REINFORCING SCHEDULE
REAR AND FORWARD ABUTMENT
 BRIDGE NO. LAK-90-1742
 S.R. 86 OVER I-90

LAKE COUNTY OHIO
 DESIGNED: LYH DRAWN: BFG TRACED: JRS CHECKED: GA REVIEWED: DATE: 2/94 REVISIONS:

File name: K:\VOL1\0007\0185\STRUCT\0185576
 Drawn By: Date: 02-21-94 (05:26)

S. 86