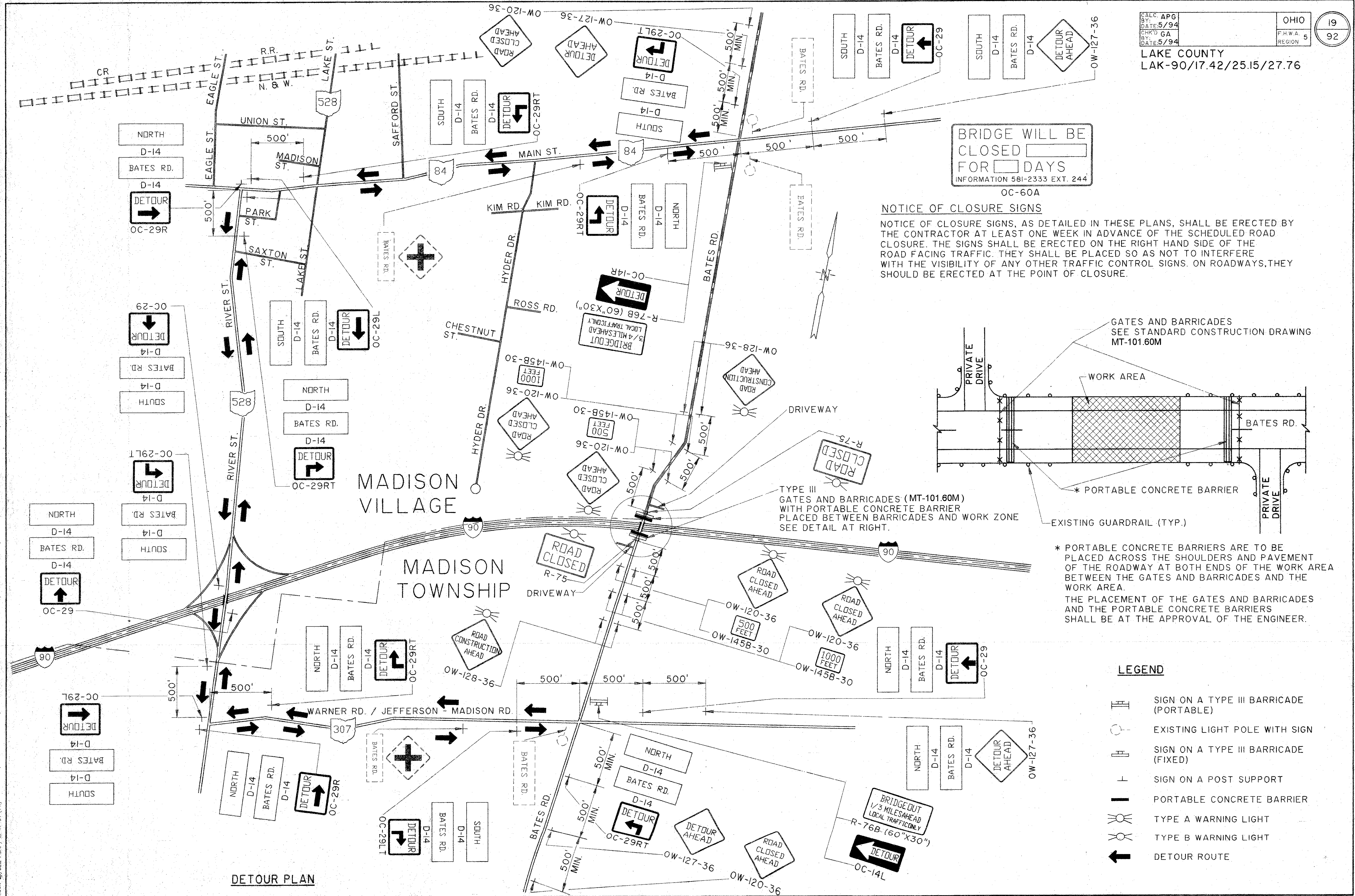


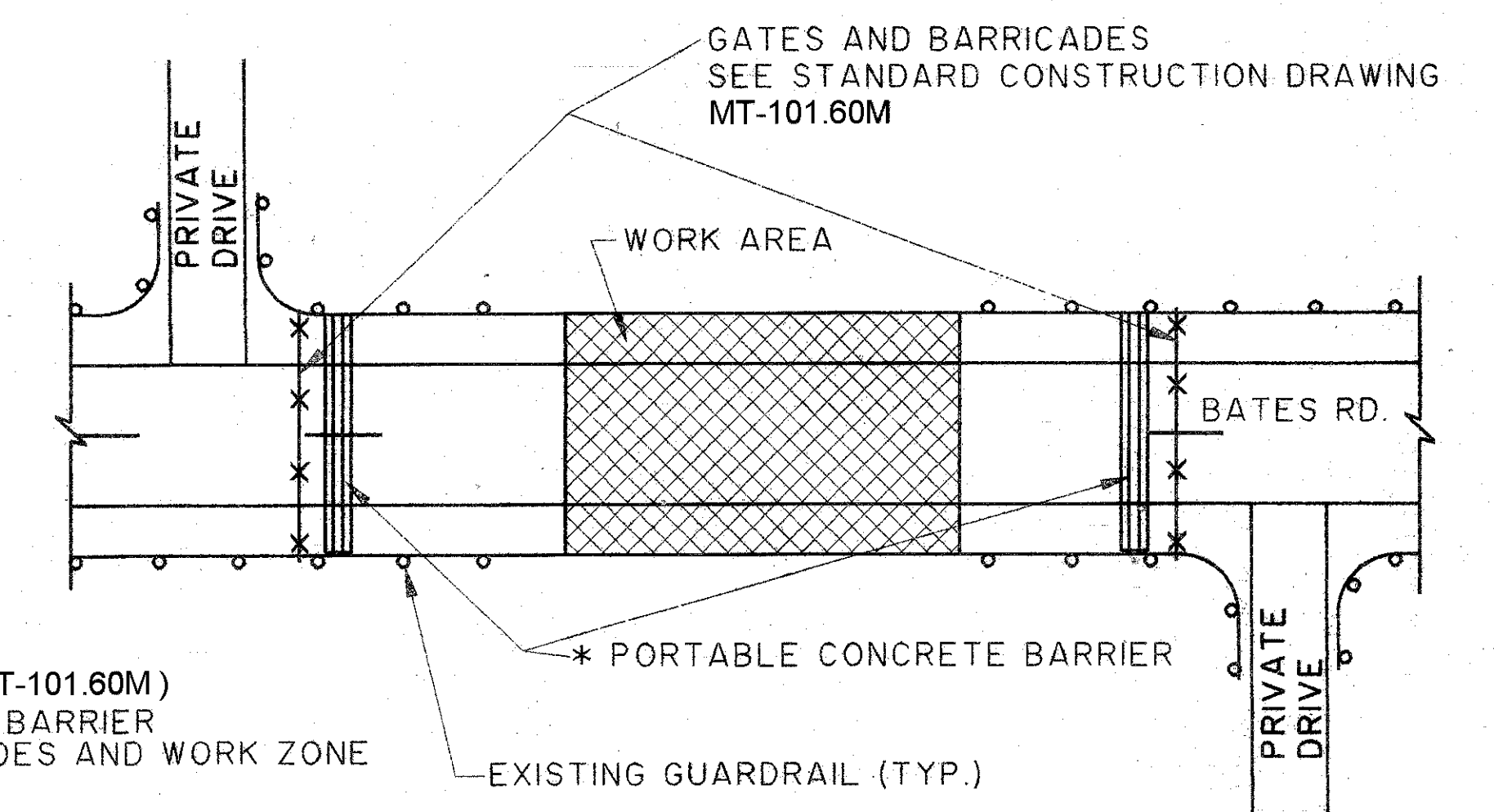
LAKE COUNTY  
LAK-90/17.42/25.15/27.76



BRIDGE WILL BE  
CLOSED   
FOR  DAYS  
INFORMATION 581-2333 EXT. 244  
OC-60A

**NOTICE OF CLOSURE SIGNS**

NOTICE OF CLOSURE SIGNS, AS DETAILED IN THESE PLANS, SHALL BE ERECTED BY THE CONTRACTOR AT LEAST ONE WEEK IN ADVANCE OF THE SCHEDULED ROAD CLOSURE. THE SIGNS SHALL BE ERECTED ON THE RIGHT HAND SIDE OF THE ROAD FACING TRAFFIC. THEY SHALL BE PLACED SO AS NOT TO INTERFERE WITH THE VISIBILITY OF ANY OTHER TRAFFIC CONTROL SIGNS. ON ROADWAYS, THEY SHOULD BE ERECTED AT THE POINT OF CLOSURE.



TYPE III  
GATES AND BARRICADES (MT-101.60M)  
WITH PORTABLE CONCRETE BARRIER  
PLACED BETWEEN BARRICADES AND WORK ZONE  
SEE DETAIL AT RIGHT.

\* PORTABLE CONCRETE BARRIERS ARE TO BE PLACED ACROSS THE SHOULDERS AND PAVEMENT OF THE ROADWAY AT BOTH ENDS OF THE WORK AREA BETWEEN THE GATES AND BARRICADES AND THE WORK AREA.  
THE PLACEMENT OF THE GATES AND BARRICADES AND THE PORTABLE CONCRETE BARRIERS SHALL BE AT THE APPROVAL OF THE ENGINEER.

**LEGEND**

- SIGN ON A TYPE III BARRICADE (PORTABLE)
- EXISTING LIGHT POLE WITH SIGN
- SIGN ON A TYPE III BARRICADE (FIXED)
- SIGN ON A POST SUPPORT
- PORTABLE CONCRETE BARRIER
- TYPE A WARNING LIGHT
- TYPE B WARNING LIGHT
- DETOUR ROUTE

DETOUR PLAN

DETOUR PLAN - BATES RD.

File No. K:\ML\2007\08\SR\STRUCT\01855079  
 Drawn By/Date: BFO / 05-17-04 (14)