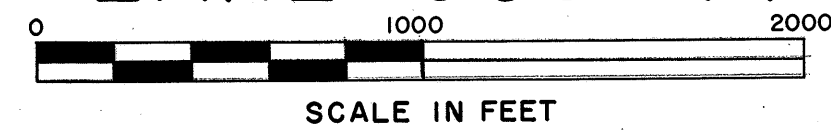


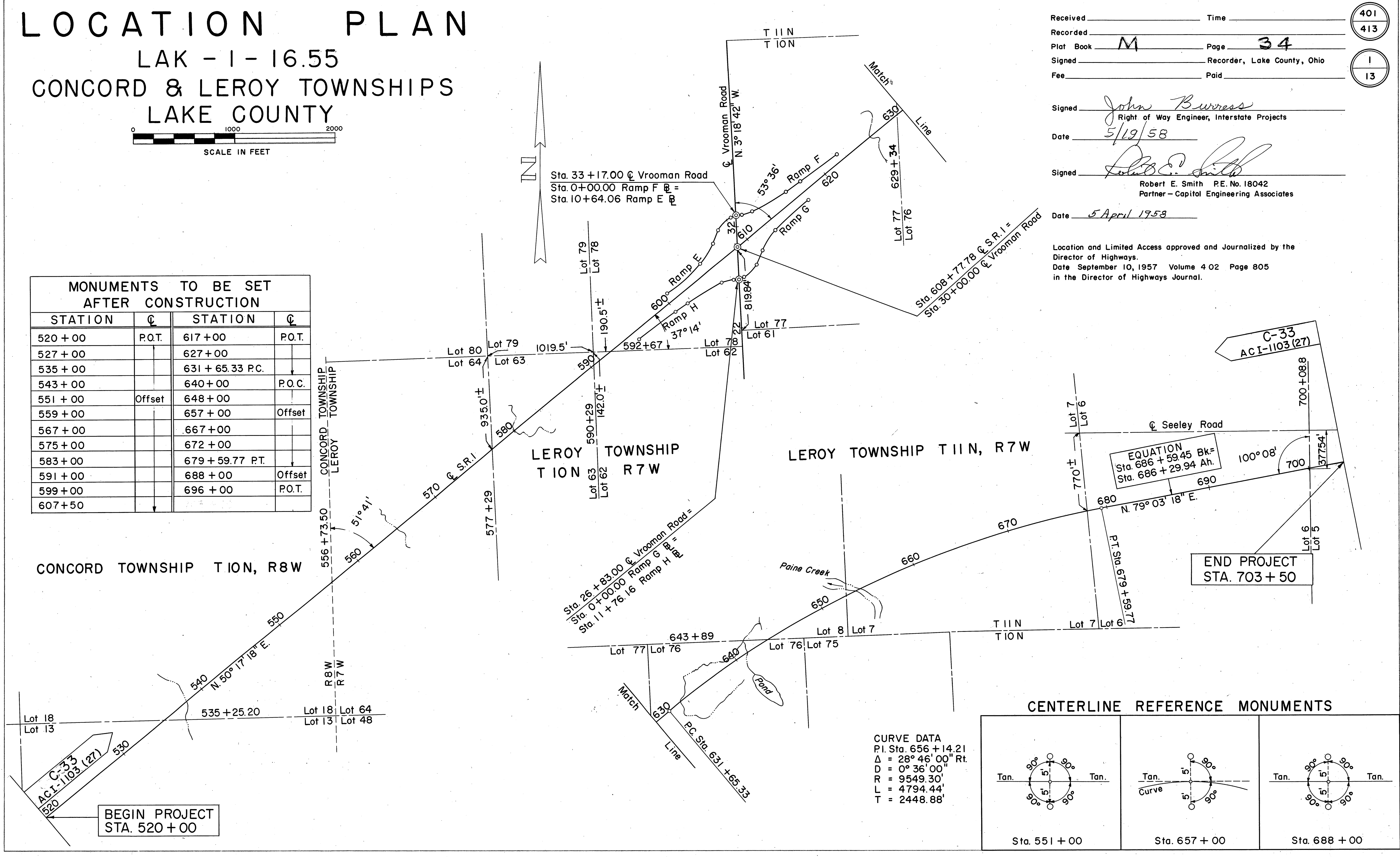
LOCATION PLAN

LAK - 1 - 16.55

CONCORD & LEROY TOWNSHIPS LAKE COUNTY



MONUMENTS TO BE SET AFTER CONSTRUCTION			
STATION	☉	STATION	☉
520 + 00	P.O.T.	617 + 00	P.O.T.
527 + 00		627 + 00	
535 + 00		631 + 65.33 P.C.	
543 + 00		640 + 00	P.O.C.
551 + 00	Offset	648 + 00	
559 + 00		657 + 00	Offset
567 + 00		667 + 00	
575 + 00		672 + 00	
583 + 00		679 + 59.77 P.T.	
591 + 00		688 + 00	Offset
599 + 00		696 + 00	P.O.T.
607 + 50			



Received _____ Time _____ 401
413

Recorded _____

Plat Book M Page 34

Signed _____ Recorder, Lake County, Ohio 1
13

Fee _____ Paid _____

Signed John Burress
Right of Way Engineer, Interstate Projects

Date 5/19/58

Signed Robert E. Smith
Robert E. Smith P.E. No. 18042
Partner - Capital Engineering Associates

Date 5 April 1958

Location and Limited Access approved and Journalized by the Director of Highways.
Date September 10, 1957 Volume 4 02 Page 805
in the Director of Highways Journal.

CURVE DATA
 P.I. Sta. 656 + 14.21
 $\Delta = 28^\circ 46' 00''$ Rt.
 $D = 0^\circ 36' 00''$
 $R = 9549.30'$
 $L = 4794.44'$
 $T = 2448.88'$

