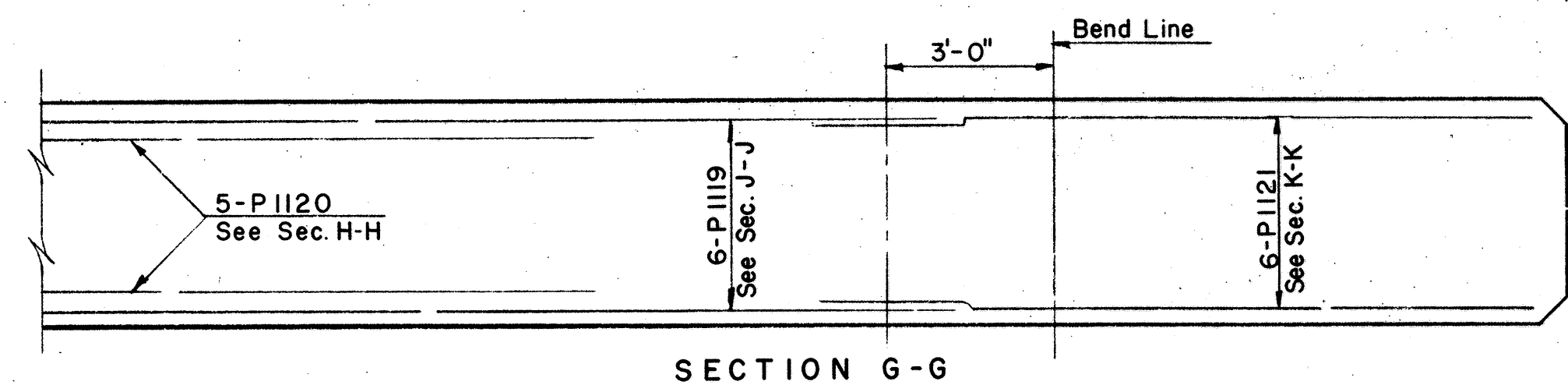
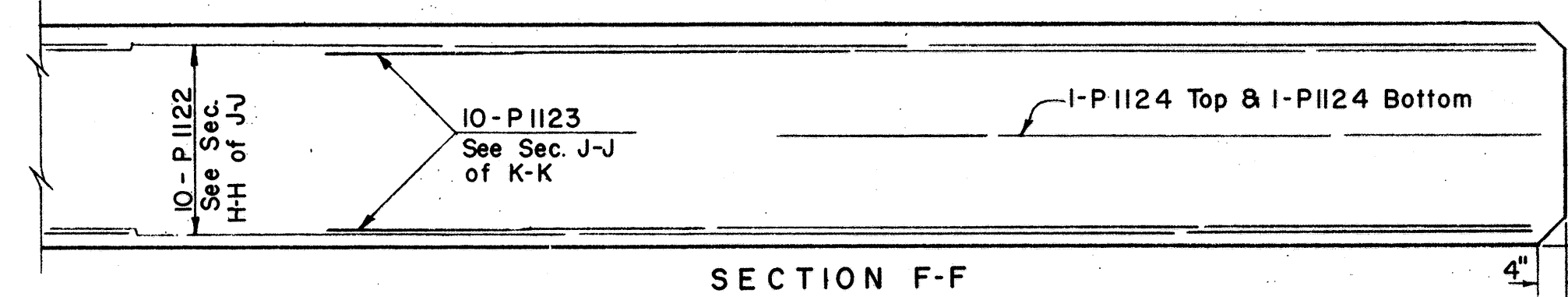
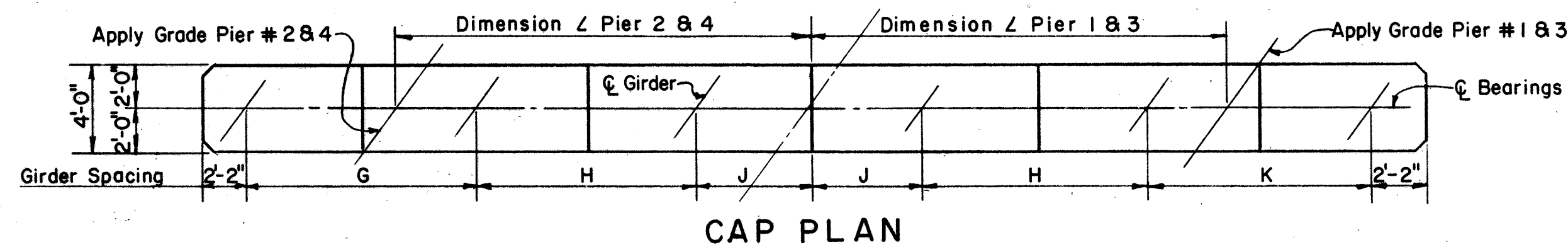


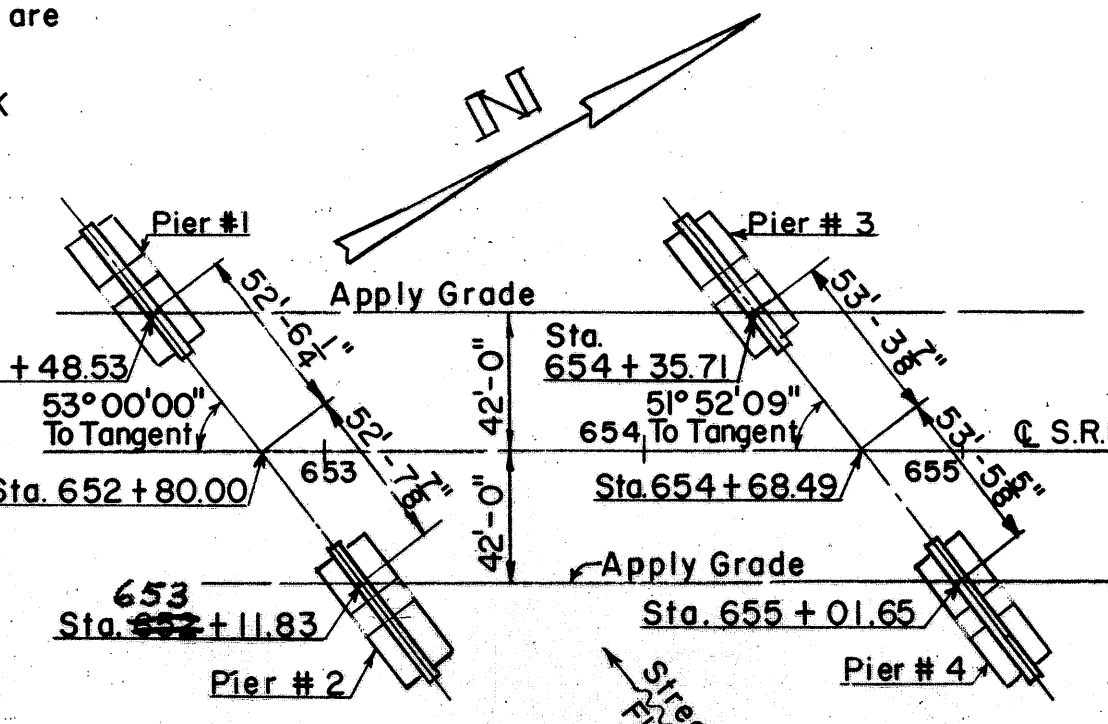
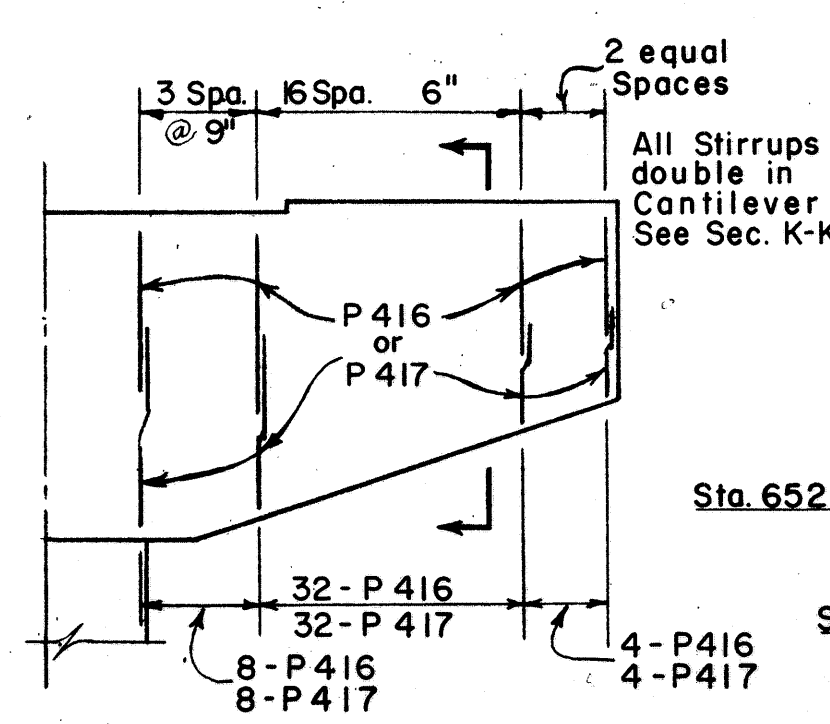
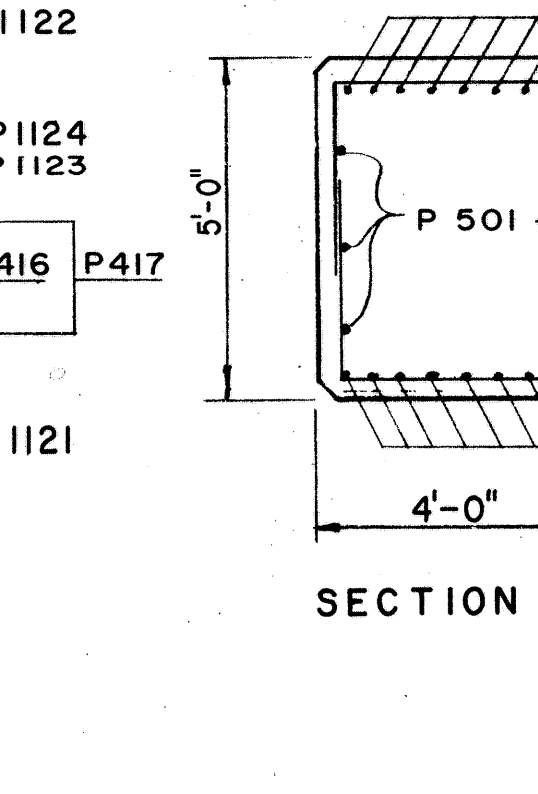
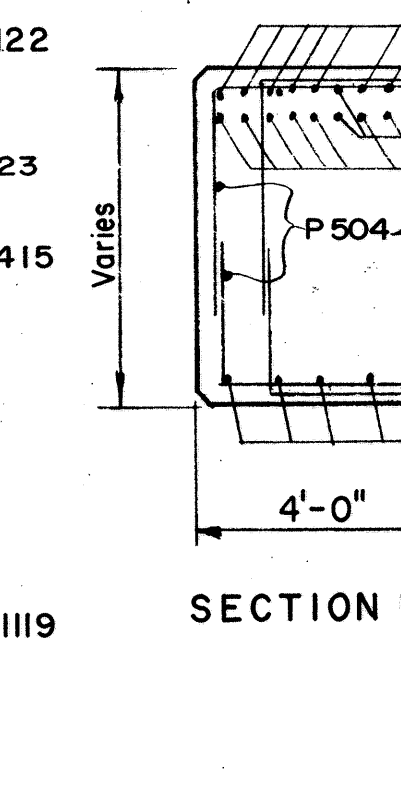
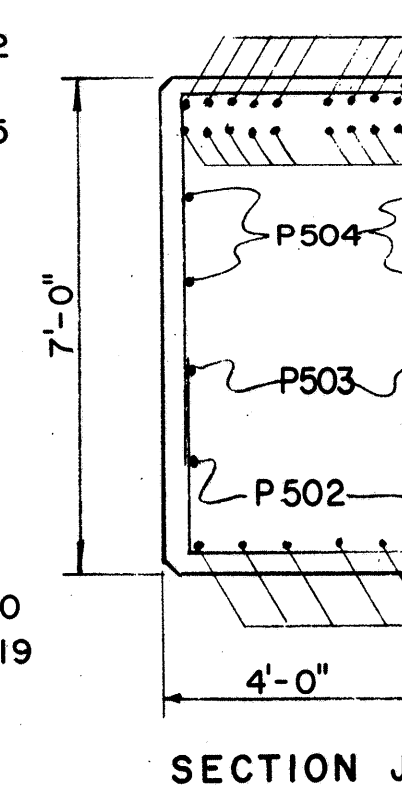
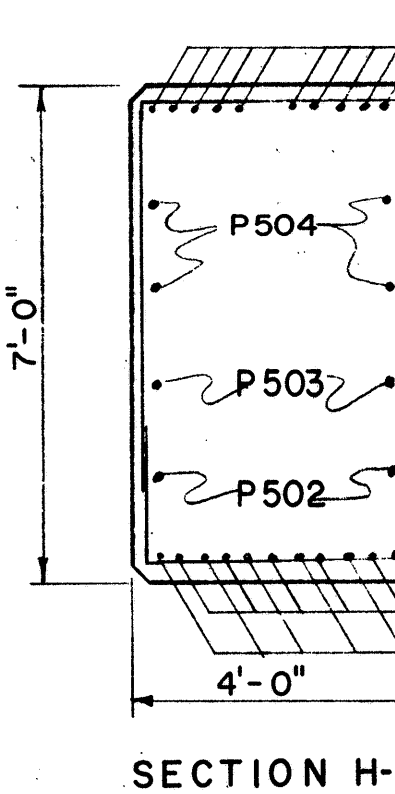
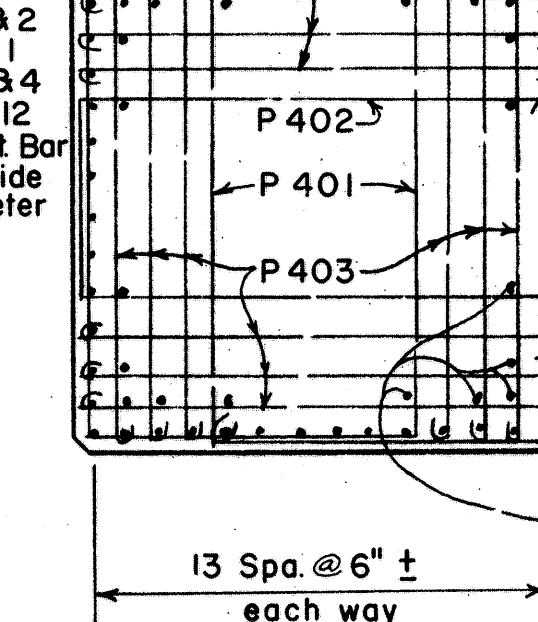
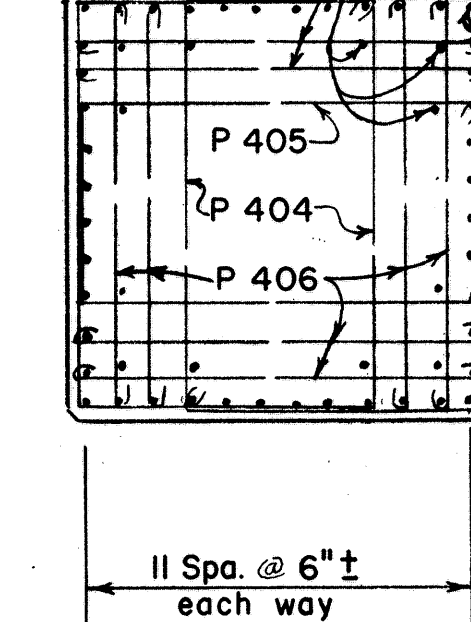
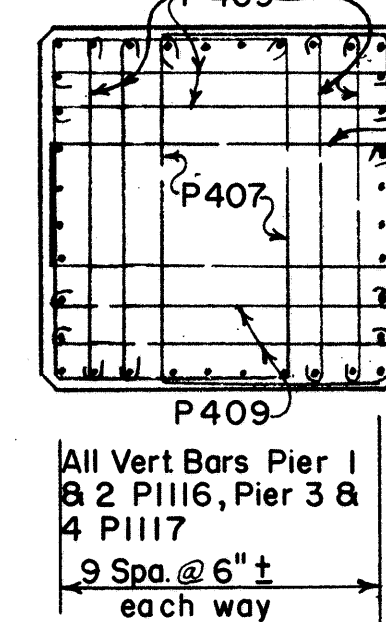
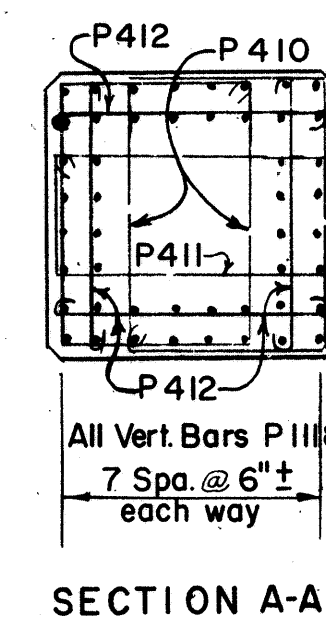
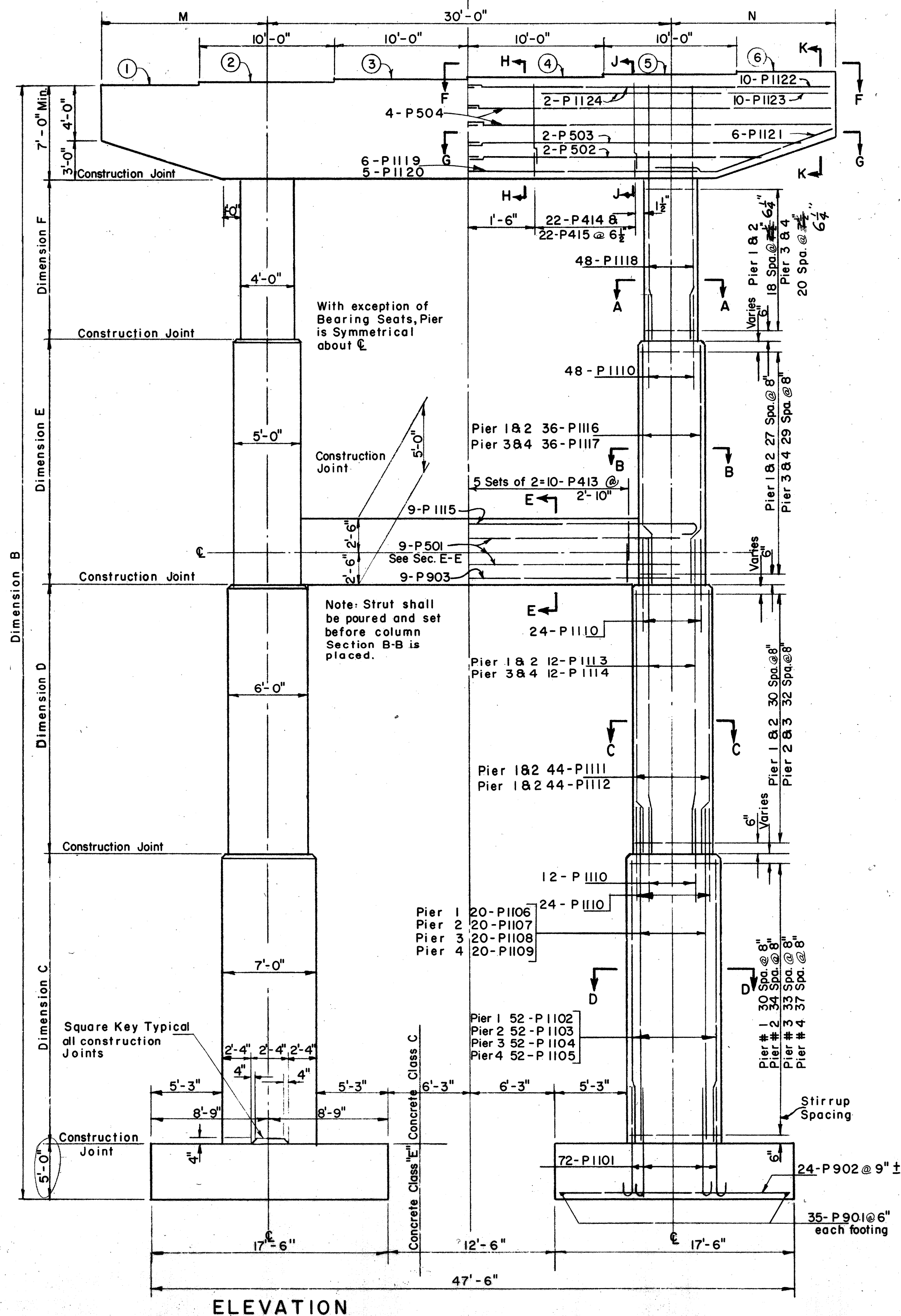
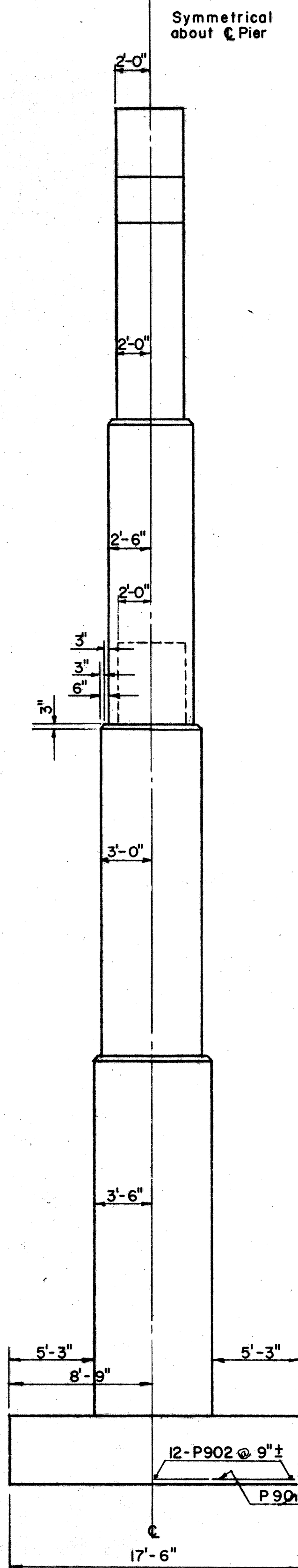
MICROFILMED
APR 6 1969

| | | | |
|-------------------|-------|---------------|------------|
| FED. RD. DIVISION | STATE | PROJECT | |
| 2 | OHIO | ACI-1103 (27) | 394 413 |

LAKE COUNTY
SEC. LAK-1-16.55



| ELEV | Pier 1 | Pier 2 | Pier 3 | Pier 4 |
|------|-------------|------------|-------------|------------|
| 1 | 732.32 | 734.62 | 737.29 | 739.69 |
| 2 | 732.78 | 734.66 | 737.78 | 739.73 |
| 3 | 732.87 | 734.70 | 737.86 | 739.78 |
| 4 | 732.91 | 734.74 | 737.90 | 739.82 |
| 5 | 732.94 | 734.83 | 737.94 | 739.87 |
| 6 | 732.98 | 734.82 | 737.99 | 739.91 |
| DIM. | 80'-3 1/2" | 82'-7 1/2" | 85'-3 1/2" | 87'-8 1/2" |
| B | 20'-4" | 22'-8" | 22'-4" | 24'-9" |
| C | 20'-0" | 20'-0" | 21'-0" | 21'-0" |
| D | 18'-0" | 18'-0" | 19'-0" | 19'-0" |
| E | 12'-0" | 12'-0" | 13'-0" | 13'-0" |
| F | 9'-7 1/2" | 10'-1 1/2" | 10'-2 1/2" | 10'-2 1/2" |
| H | 10'-2 1/2" | 10'-2 1/2" | 10'-2 1/2" | 10'-2 1/2" |
| J | 5'-1 1/2" | 5'-6 1/2" | 5'-1 1/2" | 5'-1 1/2" |
| K | 10'-1 1/2" | 9'-6 1/2" | 10'-2 1/2" | 10'-2 1/2" |
| L | 18'-11 1/2" | 19'-4 1/2" | 18'-11 1/2" | 19'-4 1/2" |
| M | 12'-1 1/2" | 12'-7 1/2" | 12'-9 1/2" | 12'-8 1/2" |
| N | 12'-8 1/2" | 12'-0 1/2" | 12'-9 1/2" | 12'-8 1/2" |



9'-11 1/2"
9'-11 1/2"
10'-11 1/2"

NOTES
Special care shall be taken in placing reinforcing steel in the bridge seats so that it will not interfere with the drilling of anchor bolt holes. See Sheet 399 for Anchor Bolt Plan.
Maximum foundation bearing pressure = 6.3 Tons per Ft.
Chamfer all edges 2" unless shown.
Reinforcing cover = 2" unless shown.
Pier footings shall extend a min. of 2'-6" into shale or to the elevation shown whichever is lower.

SEC. C-33 FED. AID PROJ. NO ACI-1103 (27)

PREPARED BY
CAPITOL ENGINEERING ASSOCIATES, DILLSBURG, PA.
FOR
STATE OF OHIO
DEPARTMENT OF HIGHWAYS

PIERS
BRIDGE NO. LAK-1-1905
S.R.I. OVER PAINE CREEK (NORTH & SOUTH BRIDGE)
LAKE COUNTY
STA. 654 + 75

| | | | | | |
|----------|-------|--------|---------|--------------|-------------------|
| DESIGNED | DRAWN | TRACED | CHECKED | REVISED DATE | REVISED |
| JHT | DRT | | LLD | 9-19-58 | 6-3-58 8-26-58 |