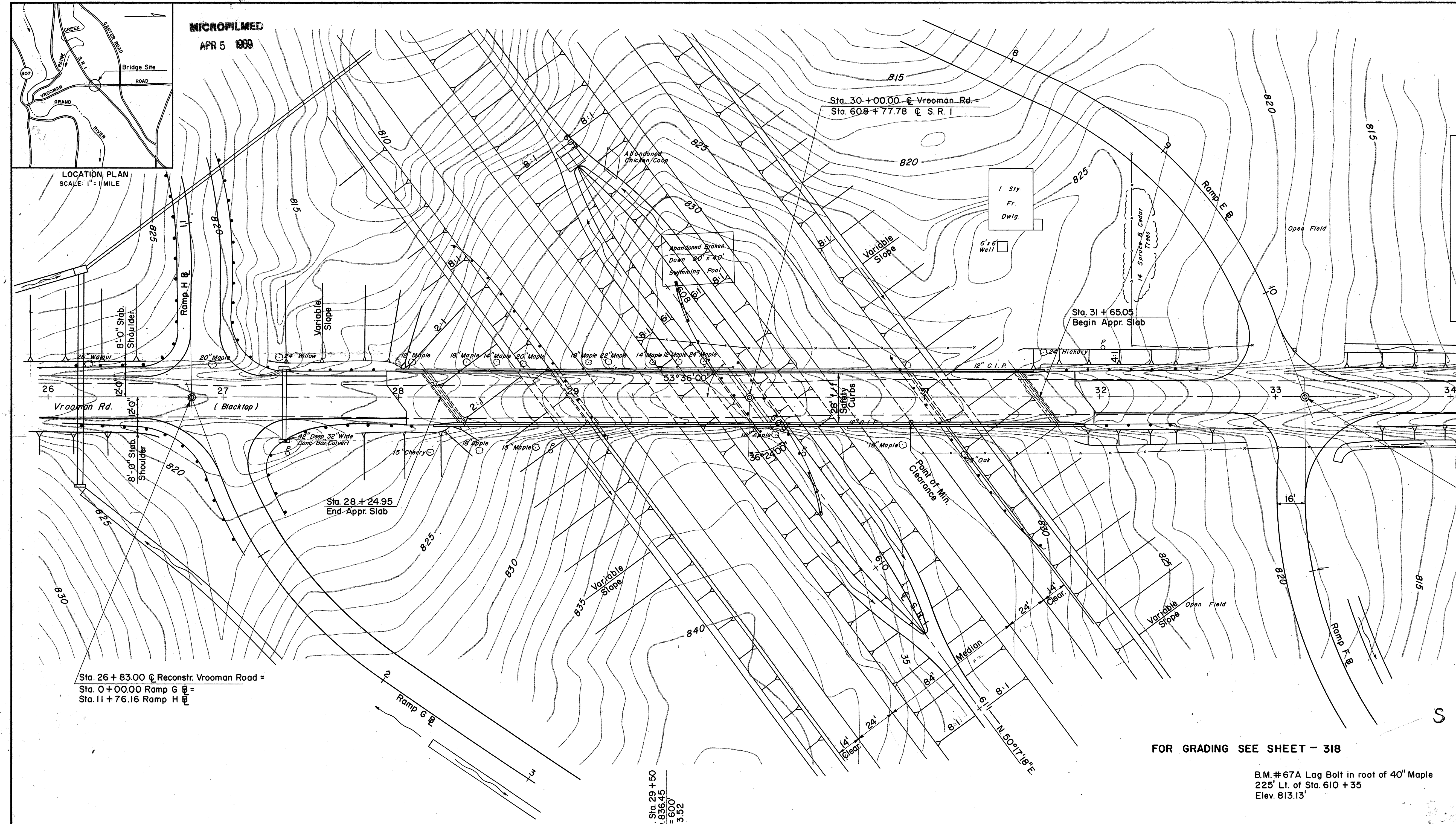
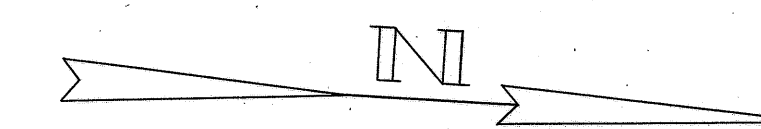


FED. RD. DIVISION	STATE	PROJECT
2	OHIO	ACI-1103(27)

379  
413

LAKE COUNTY  
SEC. LAK-1-16.55



Sta. 26 + 83.00  $\bar{C}$  Reconstr. Vrooman Road =  
Sta. 0 + 00.00 Ramp G  $\bar{B}$  =  
Sta. 11 + 76.16 Ramp H  $\bar{B}$  =

Sta. 28 + 24.95  
End Appr. Slab

Sta. 30 + 00.00  $\bar{C}$  Vrooman Rd. =  
Sta. 608 + 77.78  $\bar{C}$  S. R. 1

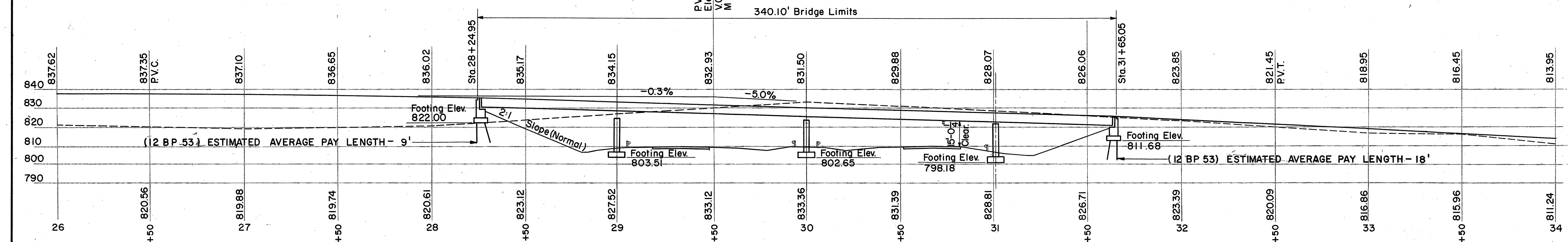
Sta. 31 + 65.05  
Begin Appr. Slab

Sta. 33 + 17.00  $\bar{C}$  Reconstr. Vrooman Road =  
Sta. 0 + 00.00 Ramp F  $\bar{B}$  =  
Sta. 10 + 64.06 Ramp E  $\bar{B}$  =

PROPOSED STRUCTURE	
TYPE:	Continuous Plate Girder with Reinforced Concrete Deck & Substructure.
SPANS:	71'-0", 101'-3", 101'-3", 61'-0"
ROADWAY:	28'-0" f/f of 2'-0" Safety Curbs.
LOAD FREQUENCY:	CF 130
WEARING SURFACE:	$\frac{3}{4}$ " Monolithic Concrete
APPR. SLAB:	25' Long
ALIGNMENT:	Tangent
ADT 920 (1975)	

FOR GRADING SEE SHEET - 318

B.M. #67A Lag Bolt in root of 40' Maple  
225' Lt. of Sta. 610 + 35  
Elev. 813.13'



SEC. C-33 FED. AID PROJ. NO. ACI-1103(27)

PREPARED BY  
CAPITOL ENGINEERING ASSOCIATES, DILLSBURG, PA.  
FOR

STATE OF OHIO  
DEPARTMENT OF HIGHWAYS  
DIVISION OF DESIGN AND CONSTRUCTION  
SUPPLY OF SERVICES

SITE PLAN  
BRIDGE NO. LAK-1-1822  
S.R. 1 UNDER VROOMAN ROAD  
LAKE COUNTY  
STA. 608 + 77.78

SCALE: 1" = 30'

DESIGNED	DRAWN	TRACED	CHECKED	REVISED	DATE	REVISED
HK	BJ		MN			