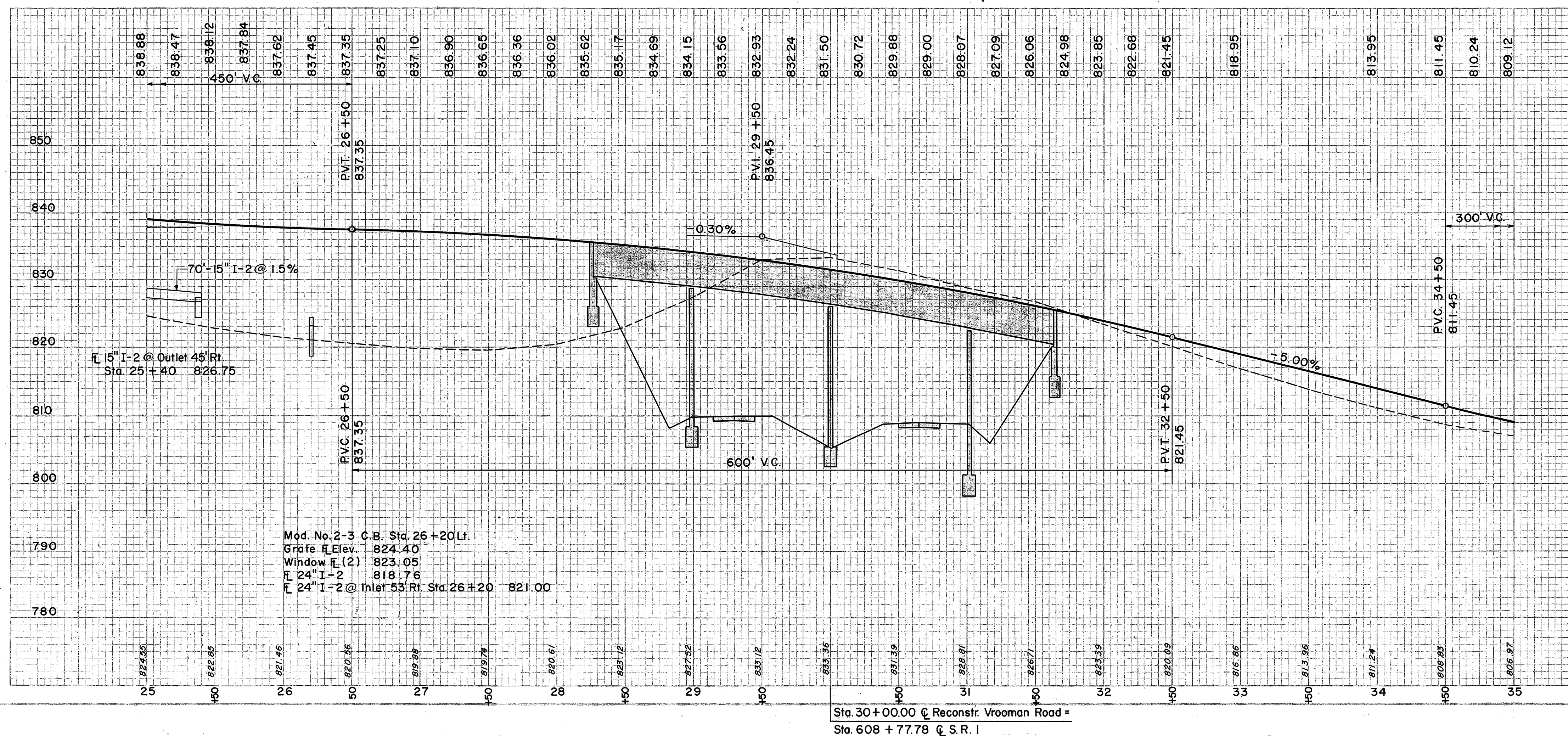
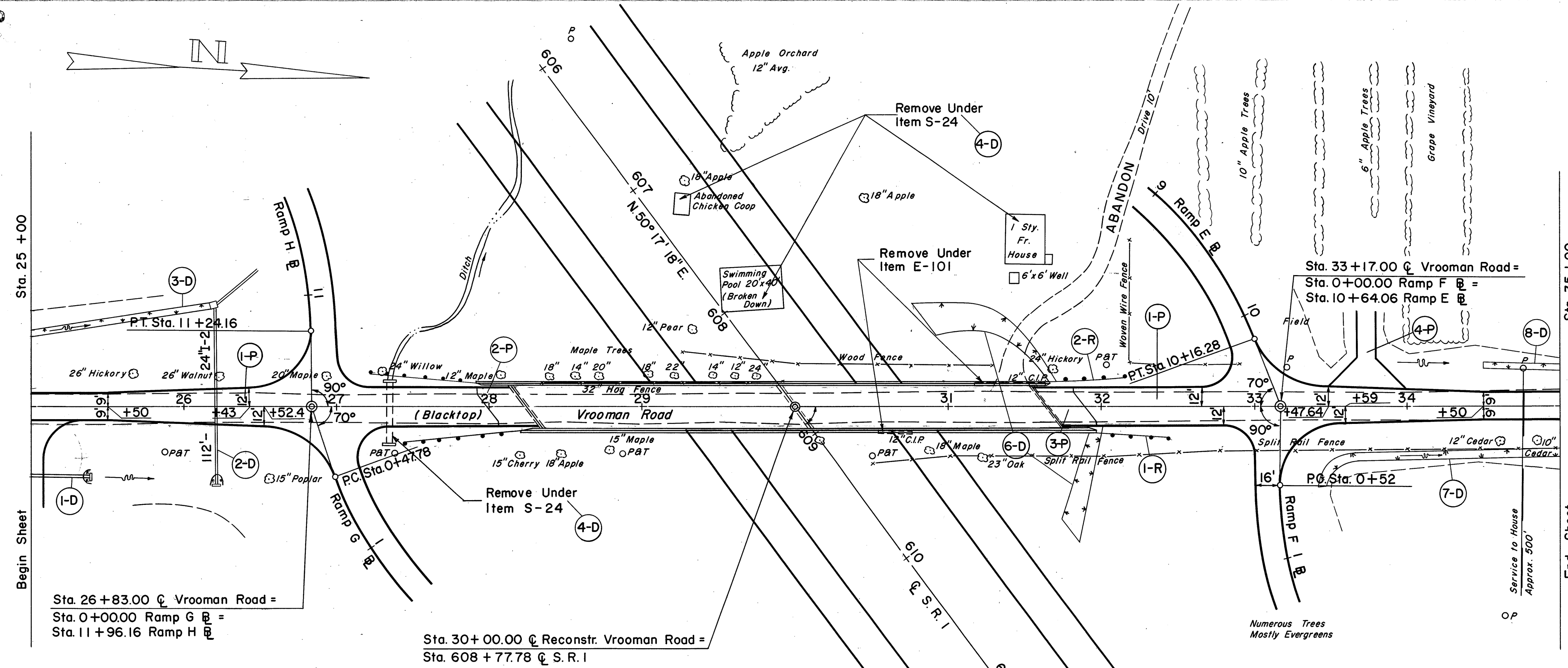


LAKE COUNTY
LAK-1-16.55



① DRAINAGE

REF. NO.	STATION	CLASS. "A" STORM SEWER UNDER PAVT.	I-2 LIN. FT.	I-8 MOD. NO. 2-3 CATCH BASIN	S-1 CONC. FOR STRUCT. CLASS "E" C.Y.	E-2 EXC. FOR STRUCT. C.Y.	L-10 SODDING S.Y.	S-24 REMOVAL EXIST. STRUCT. LUMP S.Y.	L-10 SODDING SPECIAL BERM AND SLOPE PROTECT. S.Y.
I-D	25+00	15"	40	1	3	1			
2-D	26+20	15"	40	1	4	2			
3-D	25+00	15"	40	1	4	2			
4-D	25+00	15"	40	1	4	2			
6-D	31+00	15"	40	1	4	2			
7-D	33+45	15"	40	1	4	2			
8-D	34+50	15"	40	1	4	2			
SUBTOTAL							66	18	214

② ROADWAY

REF. NO.	STATION	SIDE	SODDING LEFT DITCH		SODDING RIGHT DITCH		TOTAL
			DEPTH OF SODDING FT.	WIDTH OF SODDING FT.	DEPTH OF SODDING FT.	WIDTH OF SODDING FT.	
33+45	2	RT.	4.1	4.1	4.1	3.5	170
35+00	2	LT.	4.1	4.1	4.1	3.5	66
SUBTOTAL							67

EXCAVATION	=	2,217 C.Y.
EMBANKMENT	=	16,341 C.Y.
EMBANKMENT + 22%	=	19,936 C.Y.

③ PAVEMENT

REF. NO.	STATION	FROM	TO	CY. GALS. C.Y.	I-18 6" 4" SUBCOMP. BASE SUBGR. S.Y.	I-22 4" SUBCOMP. BASE SUBGR. S.Y.	E-101 4" SUBCOMP. BASE SUBGR. S.Y.
I-P	25+00	25+00	35+00	62.2	23.1	214.6	39.2
2-P	27+99.95	28+24.95	28+24.95	4.6	1.6	105.7	10.7
3-P	31+65.05	31+90.05	31+90.05	4.6	1.6	105.7	10.7
4-P	33+75	33+75	33+75	4.6	1.6	105.7	10.7
TOTALS				166.8	23.1	214.6	39.2

④ ROADWAY

REF. NO.	STATION	SIDE	ROADWAY		TOTAL
			WIDTH FT.	DEPTH FT.	
I-R	31+95	RT.	50	50	100
2-R	31+66	LT.	50	50	100
SUBTOTAL					200