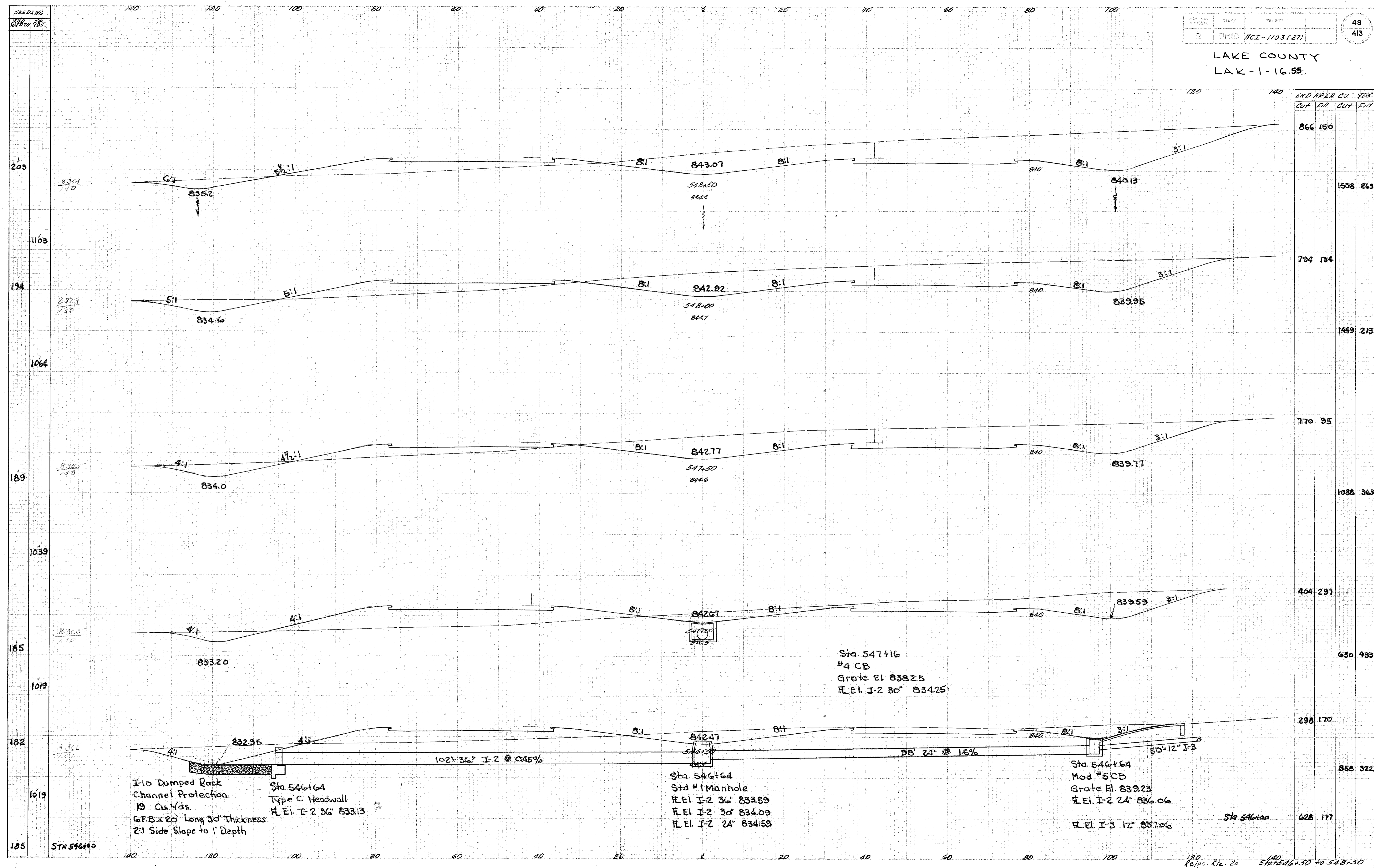


LAKE COUNTY
LAK-1-16.55



I-10 Dumped Rock Channel Protection
19 Cu. Yds.
6' B. x 20' Long 30" Thickness
2:1 Side Slope to 1' Depth

Sta. 546+64
Type C Headwall
H. El. I-2 36" 833.13

Sta. 547+16
Std #1 Manhole
H. El. I-2 36" 833.59
H. El. I-2 30" 834.09
H. El. I-2 24" 834.59

Sta. 547+16
#4 CB
Grate El. 838.25
H. El. I-2 30" 834.25

Sta. 546+64
Mod #5 CB
Grate El. 839.23
H. El. I-2 24" 836.06
H. El. I-3 12" 837.06