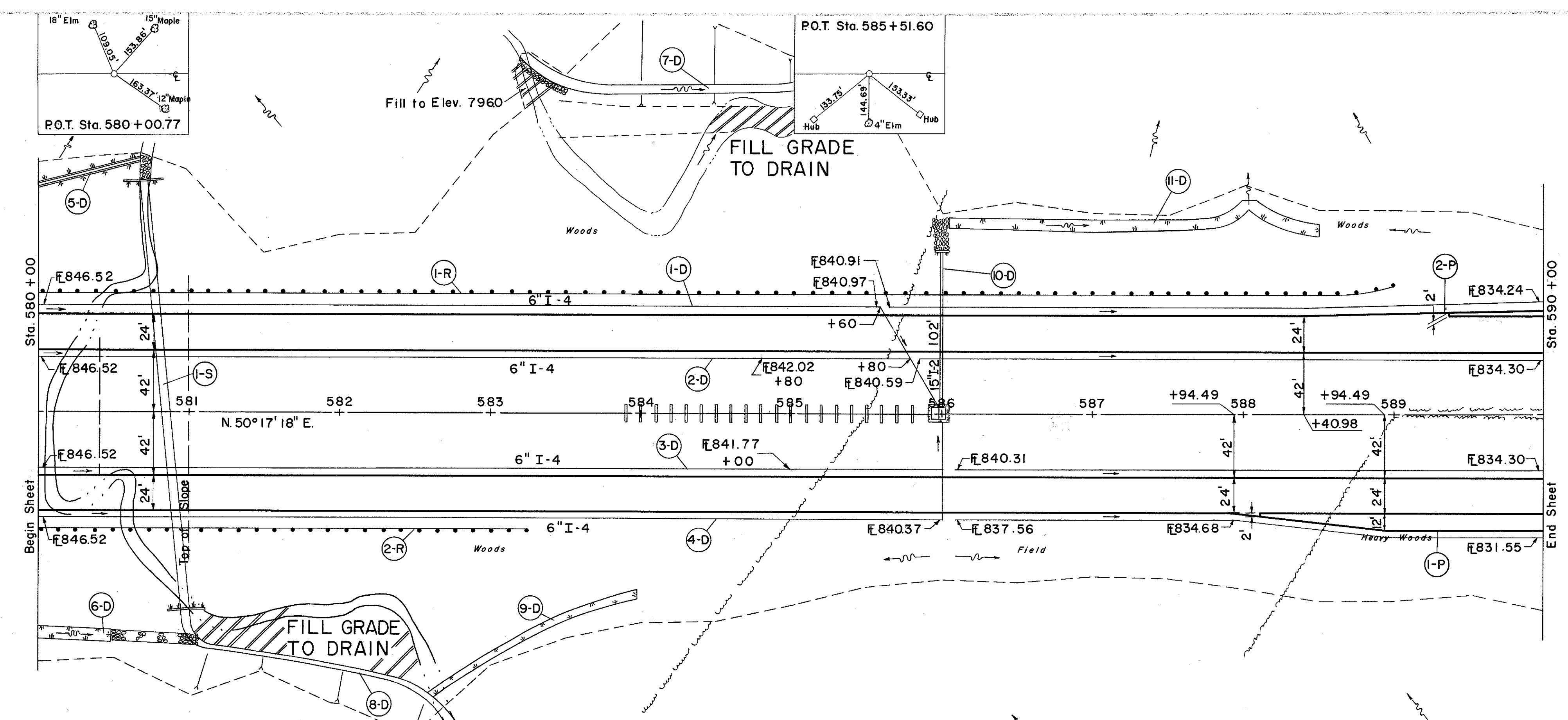
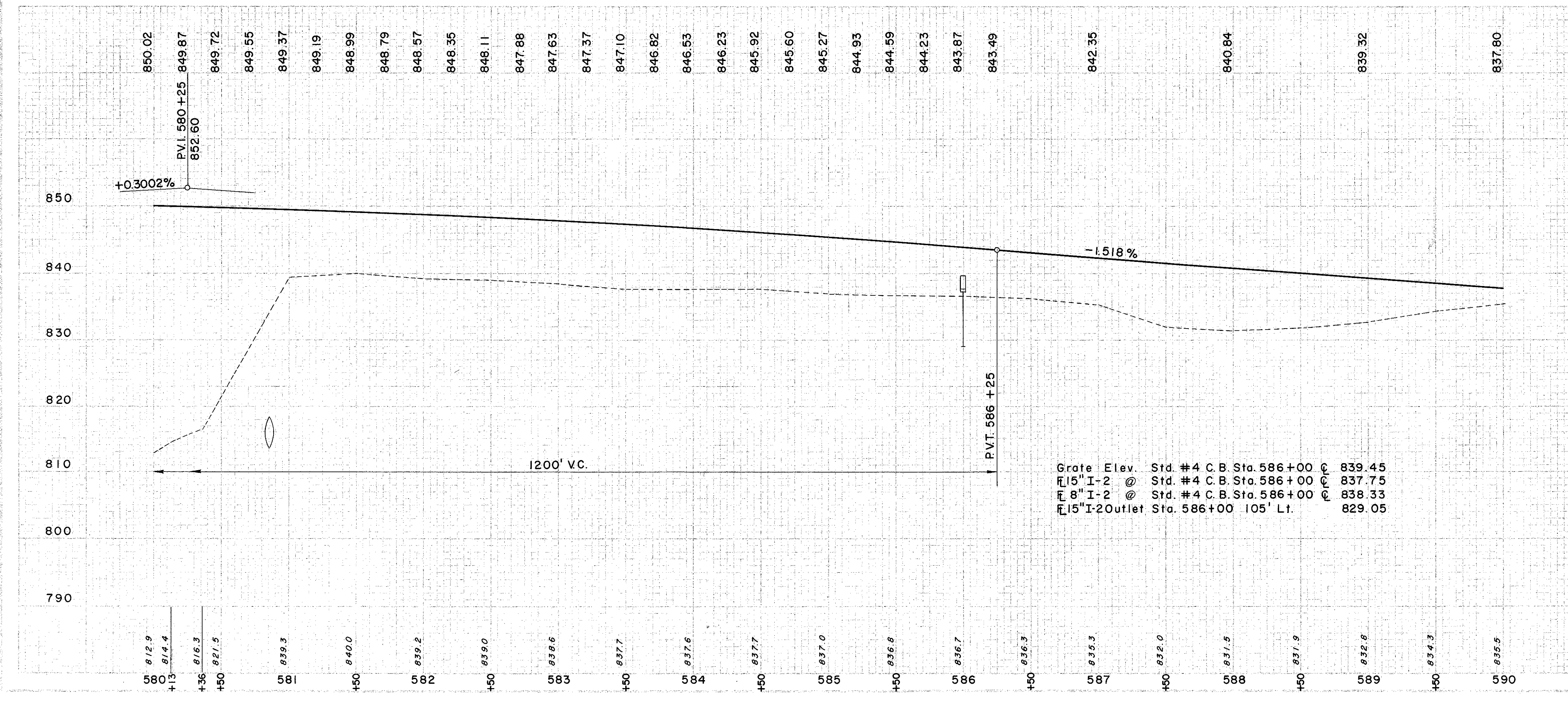


LAKE COUNTY  
LAK-I-16.55



STRUCTURE NO. LAK - I-1770  
FOR DETAILS SEE SHEET  
NO. 370



Grate Elev. Std. #4 C.B. Sta. 586+00 839.45  
 15" I-2 @ Std. #4 C.B. Sta. 586+00 837.75  
 8" I-2 @ Std. #4 C.B. Sta. 586+00 838.33  
 15" I-2 Outlet Sta. 586+00 105' L.T. 829.05

① DRAINAGE

REF. NO.	STATION	TO	FROM	CL "A" STORM SEWER UNDER PAVT. SEC. (INCHES)	I-2	I-4	I-4	I-4	I-5	I-8	S-1	S-4	I-10	I-14	E-2	E-3	L-10	I-4	
1-D	580+00	590+00	71	68	10	996	10	996	6	90° BEND	CONC. STRUCT.	REINF. STEEL	DUMPED ROCK FOR CHANNEL PROTECT.	TYPE I PAVED FOR CHANNEL GUTTER STRUCT.	EXC. FOR STRUCT.	CHANNEL SODDING EXC.	6" PIPE UNDER DRAIN DEEP	398	
2-D	580+00	590+00	10	996	10	996	10	996	6	90° BEND	CONC. STRUCT.	REINF. STEEL	DUMPED ROCK FOR CHANNEL PROTECT.	TYPE I PAVED FOR CHANNEL GUTTER STRUCT.	EXC. FOR STRUCT.	CHANNEL SODDING EXC.	6" PIPE UNDER DRAIN DEEP	398	
3-D	580+00	590+00	10	996	10	996	10	996	6	90° BEND	CONC. STRUCT.	REINF. STEEL	DUMPED ROCK FOR CHANNEL PROTECT.	TYPE I PAVED FOR CHANNEL GUTTER STRUCT.	EXC. FOR STRUCT.	CHANNEL SODDING EXC.	6" PIPE UNDER DRAIN DEEP	398	
4-D	580+00	590+00	10	996	10	996	10	996	6	90° BEND	CONC. STRUCT.	REINF. STEEL	DUMPED ROCK FOR CHANNEL PROTECT.	TYPE I PAVED FOR CHANNEL GUTTER STRUCT.	EXC. FOR STRUCT.	CHANNEL SODDING EXC.	6" PIPE UNDER DRAIN DEEP	398	
5-D	580+00	590+00	10	996	10	996	10	996	6	90° BEND	CONC. STRUCT.	REINF. STEEL	DUMPED ROCK FOR CHANNEL PROTECT.	TYPE I PAVED FOR CHANNEL GUTTER STRUCT.	EXC. FOR STRUCT.	CHANNEL SODDING EXC.	6" PIPE UNDER DRAIN DEEP	398	
6-D	580+00	590+00	10	996	10	996	10	996	6	90° BEND	CONC. STRUCT.	REINF. STEEL	DUMPED ROCK FOR CHANNEL PROTECT.	TYPE I PAVED FOR CHANNEL GUTTER STRUCT.	EXC. FOR STRUCT.	CHANNEL SODDING EXC.	6" PIPE UNDER DRAIN DEEP	398	
7-D	580+00	590+00	10	996	10	996	10	996	6	90° BEND	CONC. STRUCT.	REINF. STEEL	DUMPED ROCK FOR CHANNEL PROTECT.	TYPE I PAVED FOR CHANNEL GUTTER STRUCT.	EXC. FOR STRUCT.	CHANNEL SODDING EXC.	6" PIPE UNDER DRAIN DEEP	398	
8-D	580+00	590+00	10	996	10	996	10	996	6	90° BEND	CONC. STRUCT.	REINF. STEEL	DUMPED ROCK FOR CHANNEL PROTECT.	TYPE I PAVED FOR CHANNEL GUTTER STRUCT.	EXC. FOR STRUCT.	CHANNEL SODDING EXC.	6" PIPE UNDER DRAIN DEEP	398	
9-D	580+00	590+00	10	996	10	996	10	996	6	90° BEND	CONC. STRUCT.	REINF. STEEL	DUMPED ROCK FOR CHANNEL PROTECT.	TYPE I PAVED FOR CHANNEL GUTTER STRUCT.	EXC. FOR STRUCT.	CHANNEL SODDING EXC.	6" PIPE UNDER DRAIN DEEP	398	
10-D	580+00	590+00	10	996	10	996	10	996	6	90° BEND	CONC. STRUCT.	REINF. STEEL	DUMPED ROCK FOR CHANNEL PROTECT.	TYPE I PAVED FOR CHANNEL GUTTER STRUCT.	EXC. FOR STRUCT.	CHANNEL SODDING EXC.	6" PIPE UNDER DRAIN DEEP	398	
11-D	580+00	590+00	10	996	10	996	10	996	6	90° BEND	CONC. STRUCT.	REINF. STEEL	DUMPED ROCK FOR CHANNEL PROTECT.	TYPE I PAVED FOR CHANNEL GUTTER STRUCT.	EXC. FOR STRUCT.	CHANNEL SODDING EXC.	6" PIPE UNDER DRAIN DEEP	398	
TOTAL																			

② PAVEMENT

REF. NO.	STATION	TO	FROM	E-10	E-22
1-P	588+12	590+00	RT.	2048	2048
2-P	588+41	590+00	LT.	283	283
TOTAL				2331	2331

ROADWAY

REF. NO.	STATION	TO	FROM	E-2	E-3	I-10	L-10	S-1	S-4	S-28
1-R	580+00	589+00	LT.	9	0	0	0	0	0	0
2-R	580+00	583+25	RT.	3	2	5	0	0	0	0
TOTAL				12	2	5	0	0	0	0

③ STRUCTURES

REF. NO.	STATION	TO	FROM	E-2	E-3	I-10	L-10	S-1	S-4	S-28
1-S	580+185			80	2349	23	11	44.3	1999	2.88

STATION	SODDING LEFT DITCH		SODDING RIGHT DITCH		S.Y.	
	DEPTH OF SODDING	WIDTH OF SODDING	LENGTH	LENGTH		
586+00	7	4:1	4:1	8	200	156
588+00	2	4:1	4:1	6	50	28
SUB TOTAL					184	
580+00	9	4:1	4:1	9	50	50
580+50	4	4:1	4:1	9	150	75
582+50	4	4:1	4:1	4		
584+00	2	8:1	6:1	5		
SUB TOTAL					125	

Excavation = 1,609 C.Y.  
 Embankment = 96,454 C.Y.  
 Encasement = 22 = 117,674 C.Y.