

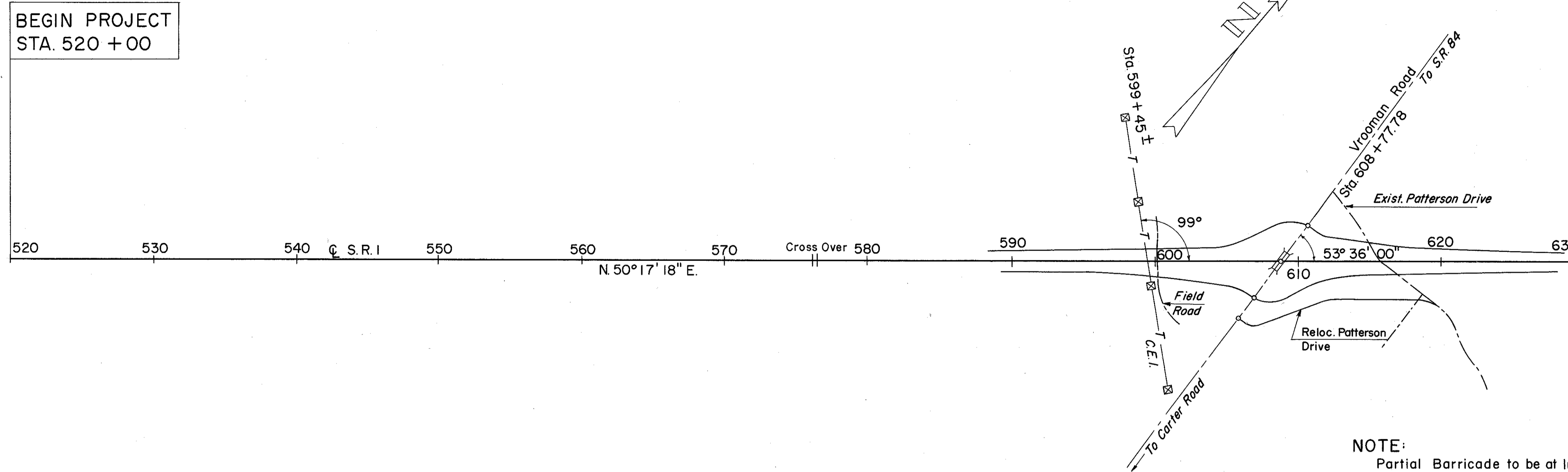
MICROFILMED
APR 5 1988

SCHEMATIC LAYOUT PLAN

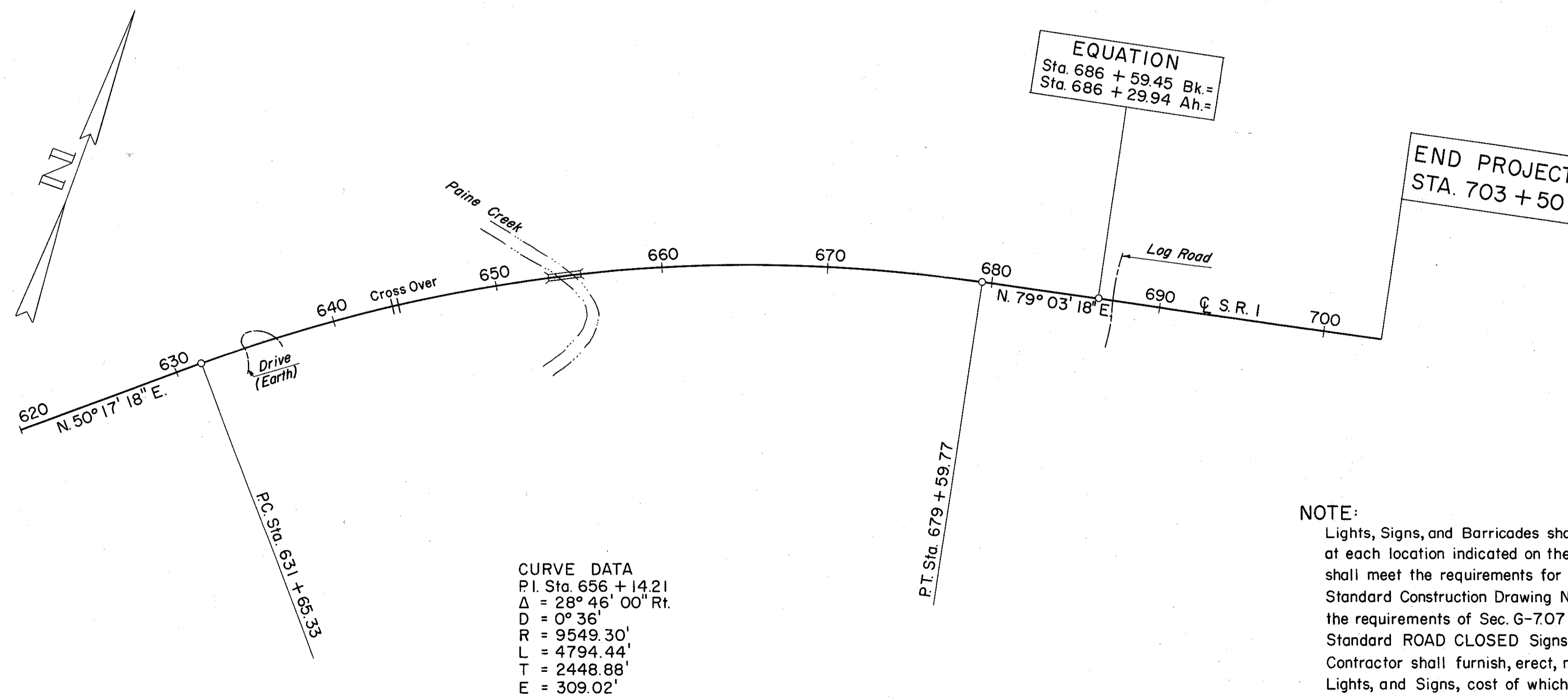
FED. RD. DIVISION	STATE	PROJECT
2	OHIO	ACI-1103 (27)

9
413

LAKE COUNTY
LAK-1-16.55



NOTE:
Partial Barricade to be at Intersection of Vrooman and Carter Road, Intersection of Vrooman and Seeley Road.



CURVE DATA
 P.I. Sta. 656 + 14.21
 $\Delta = 28^\circ 46' 00''$ Rt.
 $D = 0^\circ 36'$
 $R = 9549.30'$
 $L = 4794.44'$
 $T = 2448.88'$
 $E = 309.02'$

NOTE:
 Lights, Signs, and Barricades shall be provided and maintained at each location indicated on the Schematic Plan. Barricades shall meet the requirements for the movable Gate detailed on Standard Construction Drawing No. G-707. Lights shall meet the requirements of Sec. G-707 of the Specifications. Standard ROAD CLOSED Signs shall be 40" x 24" Size. Contractor shall furnish, erect, maintain, and remove Barricades, Lights, and Signs, cost of which shall be included in the lump sum bid for Maintaining Traffic.