

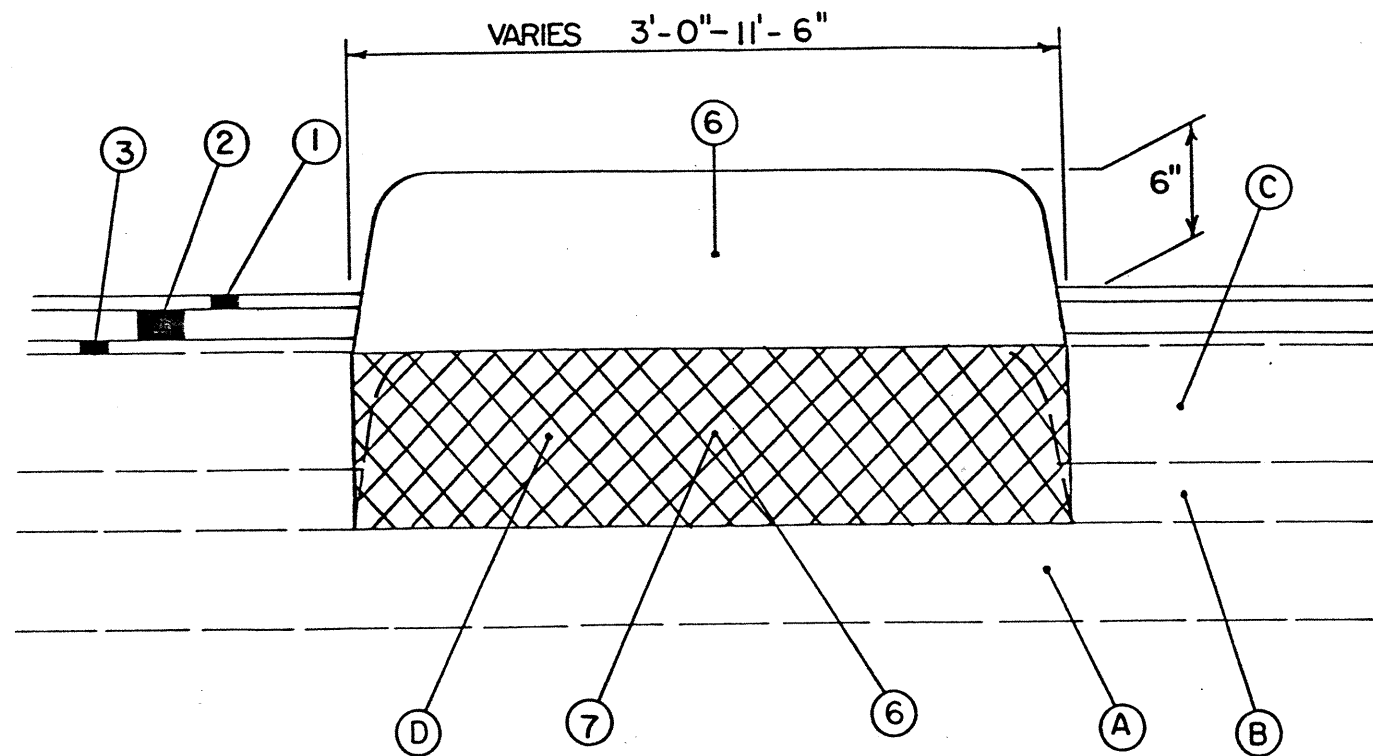
MISCELLANEOUS DETAILS

CONCRETE MEDIAN QUANTITIES (RAMP D)

LOCATION		LENGTH	202	612
FROM	TO	LIN. FT.	CONCRETE MEDIAN PAVEMENT REMOVED S.Y.	CONCRETE MEDIAN, AS PER PLAN S.Y.
0+74	5+87.57	513.6	171	171
5+87.57	7+10	122.4	70.6	70.6
TOTALS			242	242

NOTE - THE COST OF ANY NECESSARY REMOVAL AND REPLACEMENT OF ADJACENT ASPHALT CONCRETE SHALL BE INCLUDED IN THE UNIT PRICE BID FOR ITEM 202 - CONCRETE MEDIAN PAVEMENT REMOVED.

FOR TRAFFIC MAINTENANCE
SEE SHEET NO. 27



- (A) - 5" STABILIZED CRUSHED AGGREGATE
- (B) - 3" BITUMINOUS BASE COURSE
- (C) - 6"± ASPHALT OVERLAY
- (D) - EXISTING CONCRETE MEDIAN PAVEMENT
- XXXX - REMOVAL AREA

- ① - ITEM SPECIAL - 3/4" OPEN GRADED ASPHALT CONCRETE FRICTION COURSE, RUBBERIZED
- ② - ITEM 846 - 1 1/2" ASPHALT CONCRETE SURFACE COURSE, TYPE I, AC-20
- ③ - ITEM 848 - 1/2" MIN. ASPHALT CONCRETE INTERMEDIATE COURSE, TYPE I, AC-20 (3/4" AVG.)
- ⑥ - ITEM 612 - CONCRETE MEDIAN
- ⑦ - ITEM 202 - CONCRETE MEDIAN PAVEMENT REMOVED

A 4' WIDE STRIP OF ITEM 301 SHALL BE CONSTRUCTED UNDER ALL NEW GUARDRAIL

