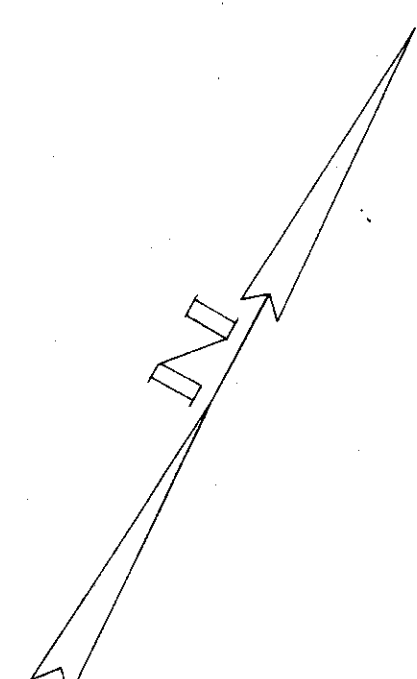
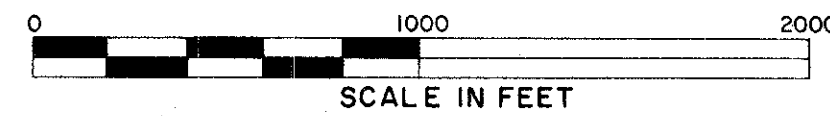


LOCATION PLAN

LAK-1-12.89

CONCORD TOWNSHIP LAKE COUNTY



Received _____ Time _____
 Recorded _____
 Plat Book M Page 52 & 52-1
 Signed _____ Recorder, Lake County, Ohio
 Fee _____ Paid _____

470
488

1
19

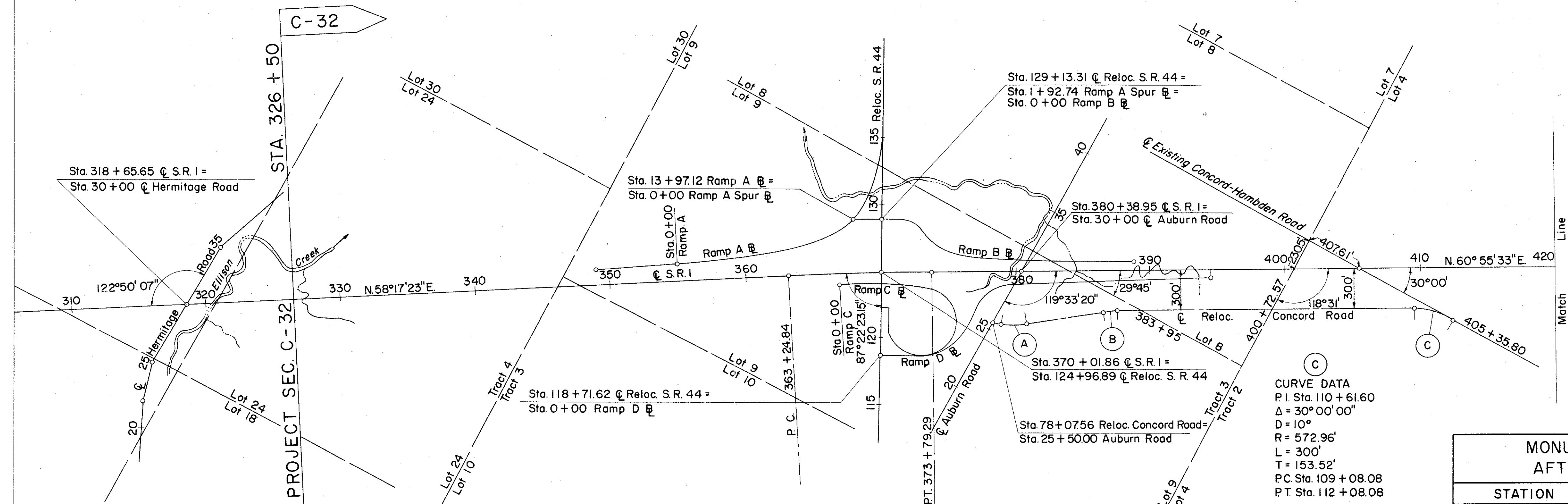
Signed _____
 Right of Way Engineer, Interstate Projects

Date _____

Signed _____
 Robert E. Smith P.E. No. 18042
 Partner - Capitol Engineering Associates

Date July 18, 1958

Location and Limited Access approved and Journalized by the
 Director of Highways.
 Date September 10, 1957 Volume 402 Page 805
 in the Director of Highways Journal.

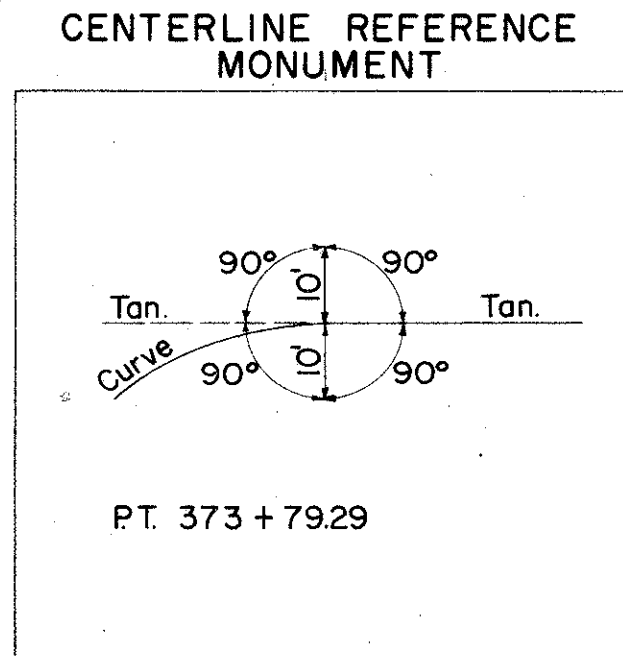


S. R. 1 CURVE DATA
 P.I. Sta. 368 + 52.16
 $\Delta = 2^\circ 38' 10''$ Rt.
 $D = 0^\circ 15' 00''$
 $R = 22,918.32'$
 $L = 1054.45'$
 $T = 527.32'$
 $E = 5.96'$

Curve A CURVE DATA
 P.I. Sta. 79 + 57.56
 $\Delta = 18^\circ 32' 57''$
 $D = 10^\circ$
 $R = 572.96'$
 $L = 185.49'$
 $T = 93.56'$
 P.C. Sta. 78 + 64.00
 P.T. Sta. 80 + 49.49

Curve B CURVE DATA
 P.I. Sta. 87 + 00.18
 $\Delta = 8^\circ 59' 37''$
 $D = 10^\circ$
 $R = 572.96'$
 $L = 89.94'$
 $T = 45.06'$
 P.C. Sta. 86 + 55.12
 P.T. Sta. 87 + 45.06

Curve C CURVE DATA
 P.I. Sta. 110 + 61.60
 $\Delta = 30^\circ 00' 00''$
 $D = 10^\circ$
 $R = 572.96'$
 $L = 300'$
 $T = 153.52'$
 P.C. Sta. 109 + 08.08
 P.T. Sta. 112 + 08.08



MONUMENTS TO BE SET AFTER CONSTRUCTION			
STATION	☒	STATION	☒
331 + 00	P.O.T.	382 + 00	P.O.T.
339 + 00		390 + 00	
347 + 00		398 + 00	
355 + 00		407 + 00	
363 + 24.84 P.C.		416 + 00	
373 + 79.29 P.T.	OFFSET		

C-32

BEGIN PROJECT SEC. C-32

ACI-1103(21)

CONCORD T-10-N TOWNSHIP R-8-W