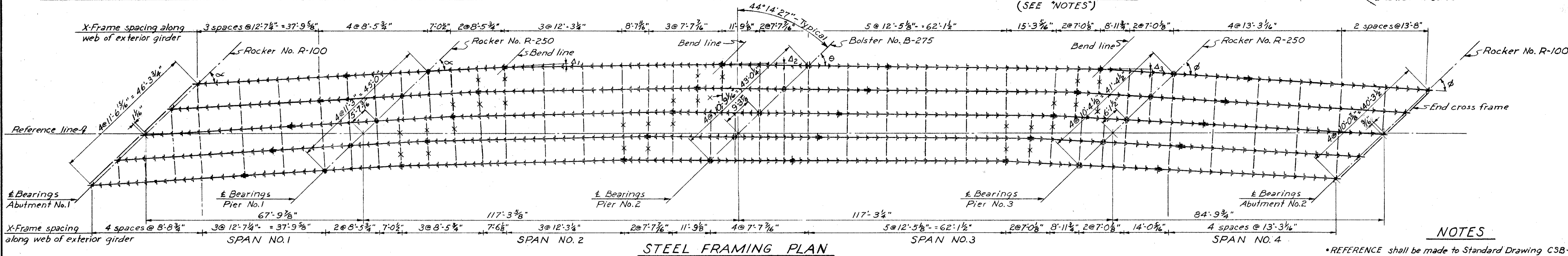
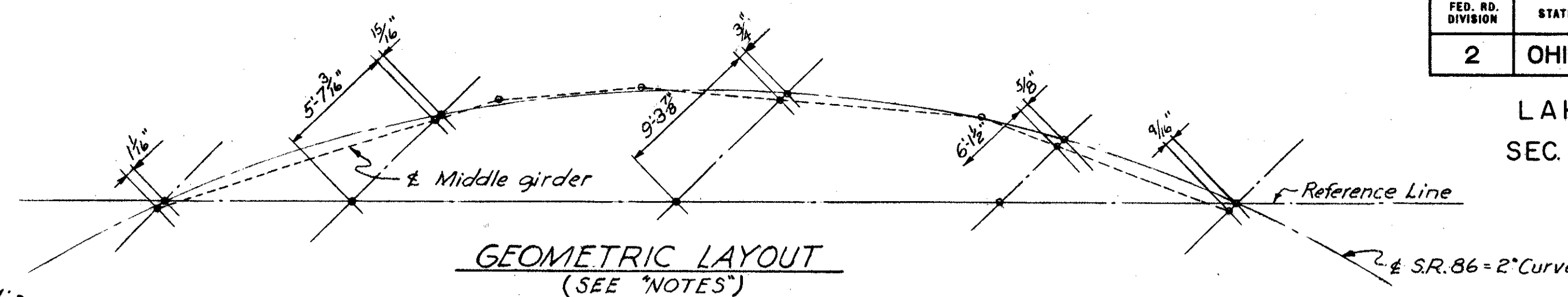


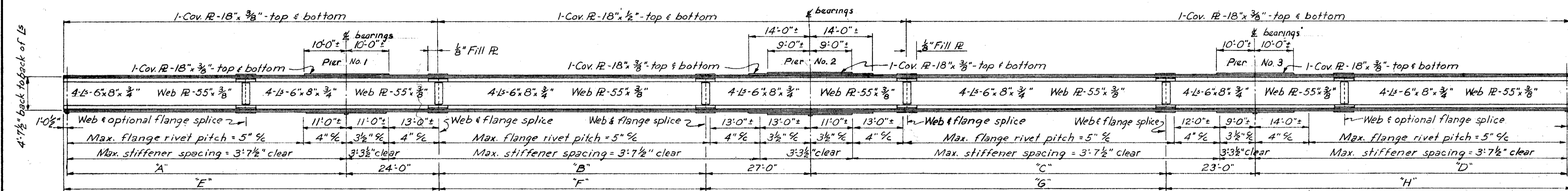
LAKE COUNTY  
SEC. LAK-1-12.89

GIRDER	A	B	C	D	E	F	G	H
G <sub>1</sub>	41'-25' <sup>37</sup> / <sub>8</sub> "	71'-6' <sup>3</sup> / <sub>8</sub> "	1'-49' <sup>35</sup> / <sub>8</sub> "	68'-3' <sup>3</sup> / <sub>8</sub> "	1'-55' <sup>04</sup> / <sub>8</sub> "	45'-10' <sup>16</sup> / <sub>8</sub> "	91'-5' <sup>1</sup> / <sub>8</sub> "	2'-24' <sup>52</sup> / <sub>8</sub> "
G <sub>2</sub>	41'-15' <sup>18</sup> / <sub>8</sub> "	71'-9' <sup>3</sup> / <sub>8</sub> "	1'-50' <sup>18</sup> / <sub>8</sub> "	68'-8' <sup>1</sup> / <sub>8</sub> "	1'-55' <sup>42</sup> / <sub>8</sub> "	45'-01' <sup>18</sup> / <sub>8</sub> "	91'-8' <sup>3</sup> / <sub>8</sub> "	2'-25' <sup>32</sup> / <sub>8</sub> "
G <sub>3</sub>	41'-04' <sup>58</sup> / <sub>8</sub> "	72'-0' <sup>0</sup> / <sub>8</sub> "	1'-51' <sup>01</sup> / <sub>8</sub> "	69'-0' <sup>0</sup> / <sub>8</sub> "	1'-56' <sup>20</sup> / <sub>8</sub> "	44'-52' <sup>15</sup> / <sub>8</sub> "	92'-0' <sup>0</sup> / <sub>8</sub> "	2'-26' <sup>12</sup> / <sub>8</sub> "
G <sub>4</sub>	40'-54' <sup>39</sup> / <sub>8</sub> "	72'-3' <sup>3</sup> / <sub>8</sub> "	1'-51' <sup>44</sup> / <sub>8</sub> "	69'-4' <sup>3</sup> / <sub>8</sub> "	1'-56' <sup>58</sup> / <sub>8</sub> "	44'-43' <sup>21</sup> / <sub>8</sub> "	92'-3' <sup>3</sup> / <sub>8</sub> "	2'-26' <sup>52</sup> / <sub>8</sub> "
G <sub>5</sub>	40'-44' <sup>19</sup> / <sub>8</sub> "	72'-6' <sup>6</sup> / <sub>8</sub> "	1'-52' <sup>27</sup> / <sub>8</sub> "	69'-9' <sup>6</sup> / <sub>8</sub> "	1'-51' <sup>36</sup> / <sub>8</sub> "	44'-34' <sup>22</sup> / <sub>8</sub> "	92'-7' <sup>7</sup> / <sub>8</sub> "	2'-27' <sup>32</sup> / <sub>8</sub> "

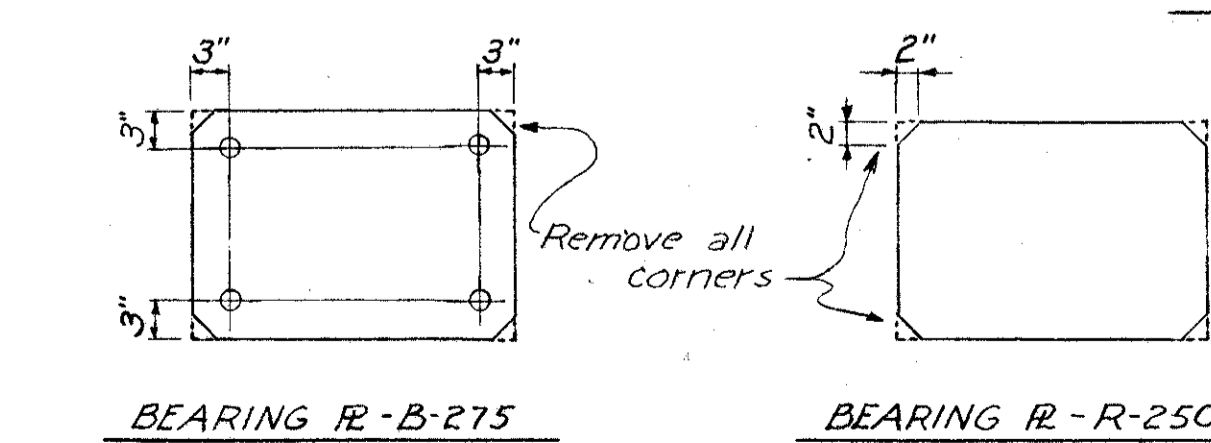
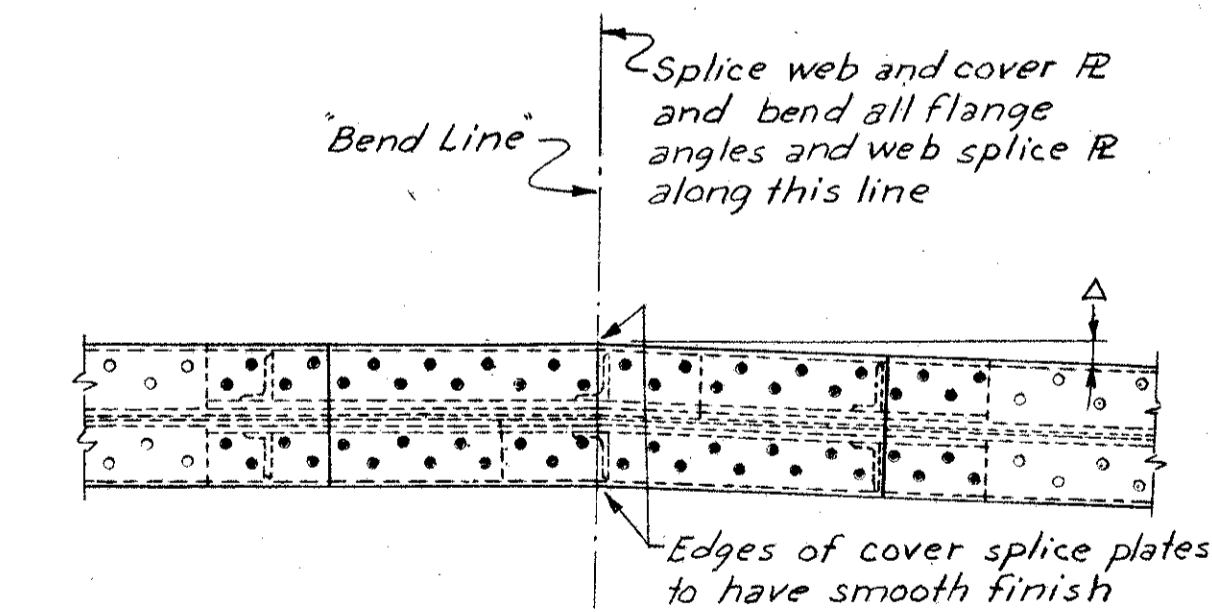
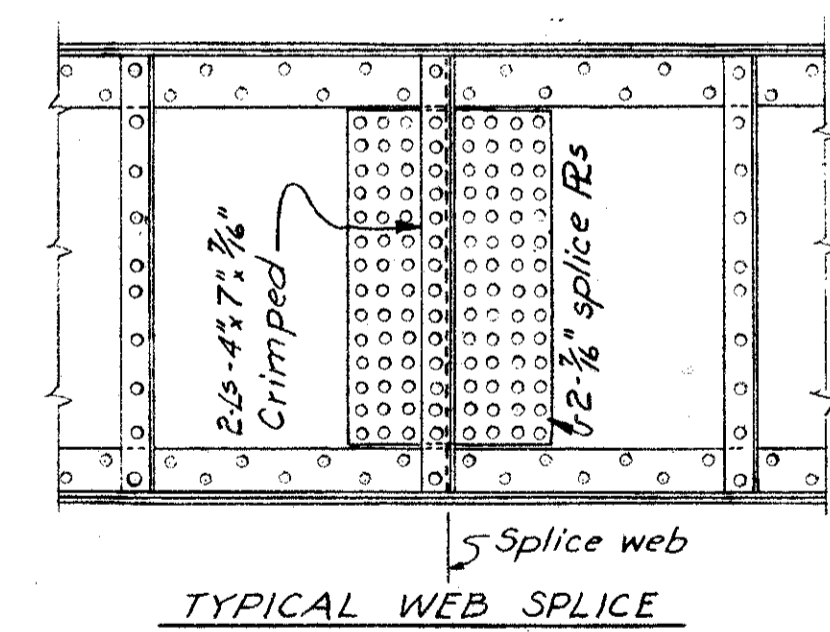
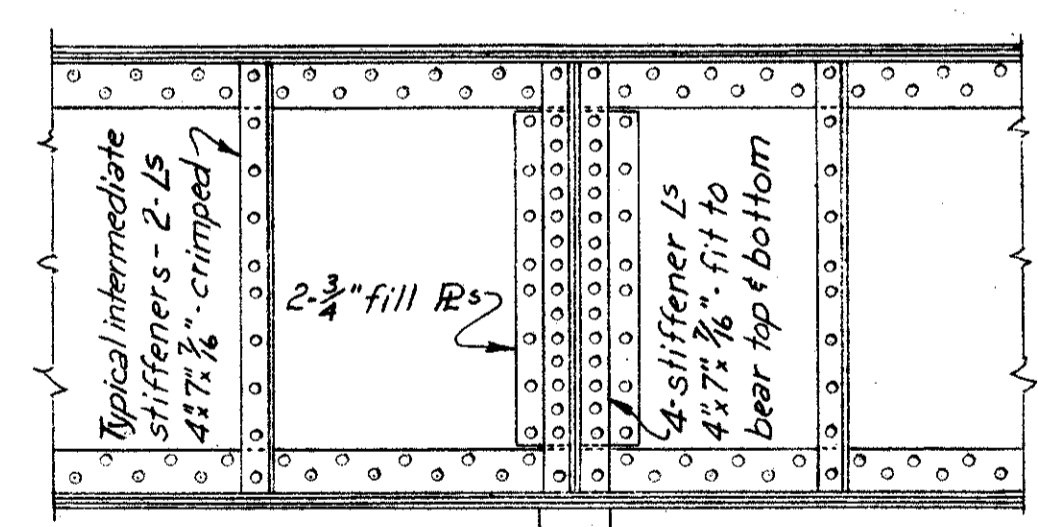
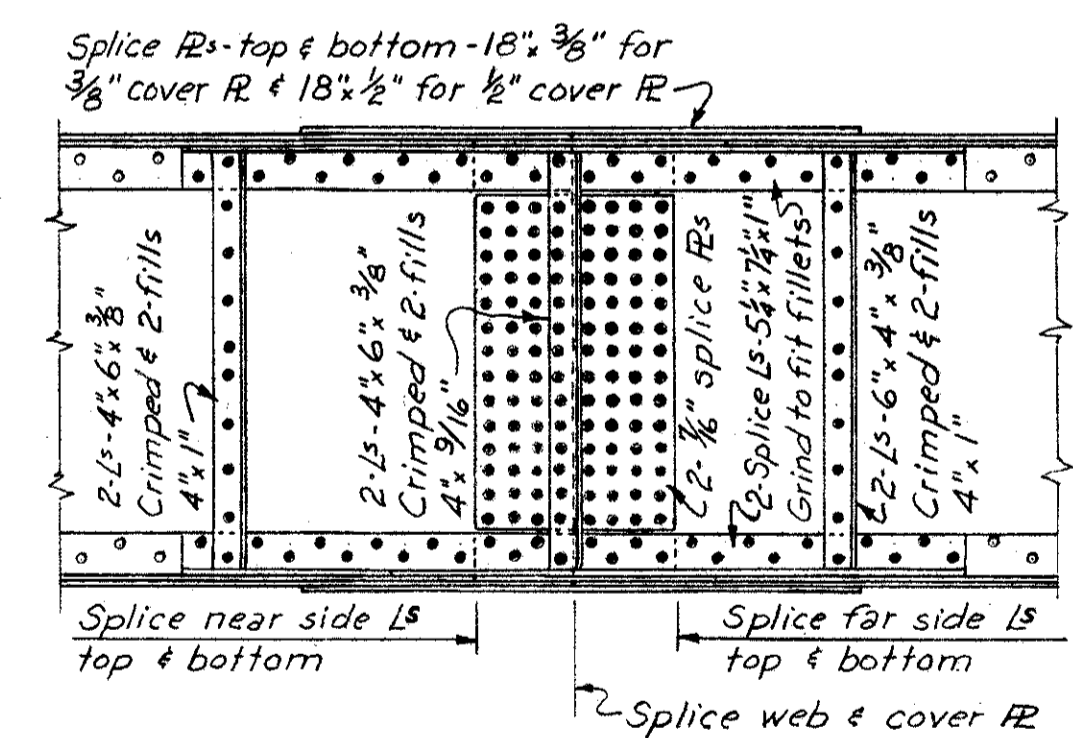
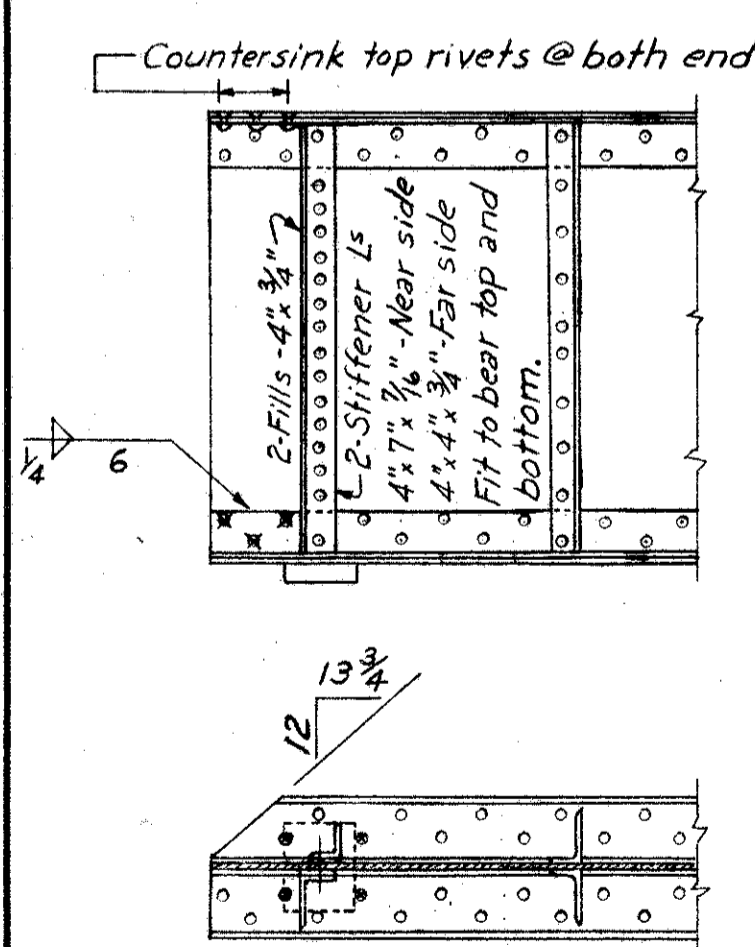


NOTES

- REFERENCE shall be made to Standard Drawing CSB-2-56, sheets 2 & 3 of 6, revised 3-1-58, for details of end dams, gutters, scuppers, pipe drains and curb plates.
- REFERENCE shall be made to Standard Drawing AR-1-57, revised 3-1-58, for aluminum railing type "A" and concrete parapet details.
- REFERENCE shall be made to Standard Drawing RB-1-55, dated 3-1-55, for details of rockers and bolsters.
- WELDING of structural steel shall be Class "A" except as otherwise shown. Welds shown as field welds may, at the option of the Contractor, be made in the shop.
- DECK PLACING PROCEDURE: In placing the deck concrete, construction joints will be permitted, parallel to the transverse reinforcing steel and near the middle of any span. Because of the flow of curing water from the surface of previously-placed deck concrete, the sequence of pours shall be upgrade, starting at both abutments.
- Rivets shall be 3/8" diameter unless otherwise noted.
- Concrete and reinforcing steel above parapet construction joint included with railing for payment.
- All concrete shall be Class "C".
- All stiffeners shall be normal to the girders.
- GEOMETRIC LAYOUT: Girder positions are determined by placing all bearing points of both exterior girders on the curb line and placing bearing points of all interior girders at equal spaces.



NOTE: Minimum flange rivet pitch = 3" & maximum is as shown.



ALTERATIONS TO STANDARD BEARING PLATES  
(See Standard Drawing RB-1-55 For Details Not Shown)

DEFLECTION & CAMBER	SPAN NO. 1	SPAN NO. 2	SPAN NO. 3	SPAN NO. 4
Deflection due to weight of steel	0"	1/4"	3/8"	1/2"
Deflection due to remaining dead load	1/8"	3/4"	1/2"	3/8"
Convexity required for vertical curve	1 1/4"	2 3/4"	2 3/8"	1 1/2"
Sum of convexity and deflection	1 1/8"	3 1/8"	3 3/8"	1 1/2"
Required camber	1 1/8"	3 3/8"	3 3/8"	1 1/2"

SEC. C-32 FED. AID PROJ. NO. ACI-1103 (21)

PREPARED BY  
CAPITOL ENGINEERING ASSOCIATES, DILLSBURG, PA.  
FOR

STATE OF OHIO  
DEPARTMENT OF HIGHWAYS

STEEL FRAMING  
BRIDGE NO. LAK-1-1644  
SR 1 UNDER S.R. 86  
LAKE COUNTY

STA. 513 + 35.58

DESIGNED	DRAWN	TRACED	CHECKED	REVISED DATE	REVISED
2/27	3/11				