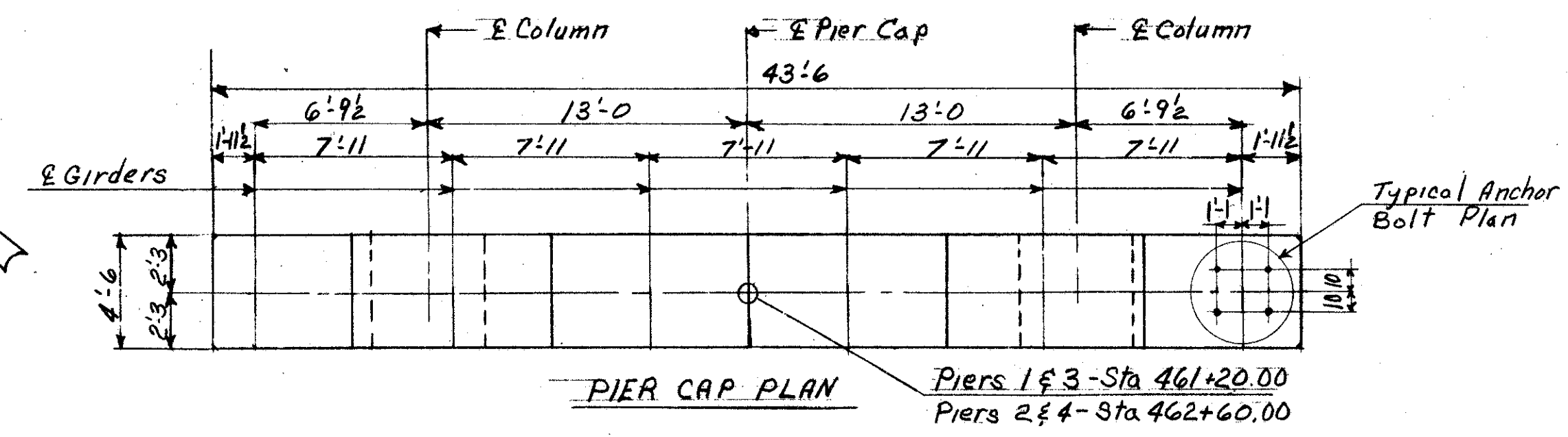


W-3

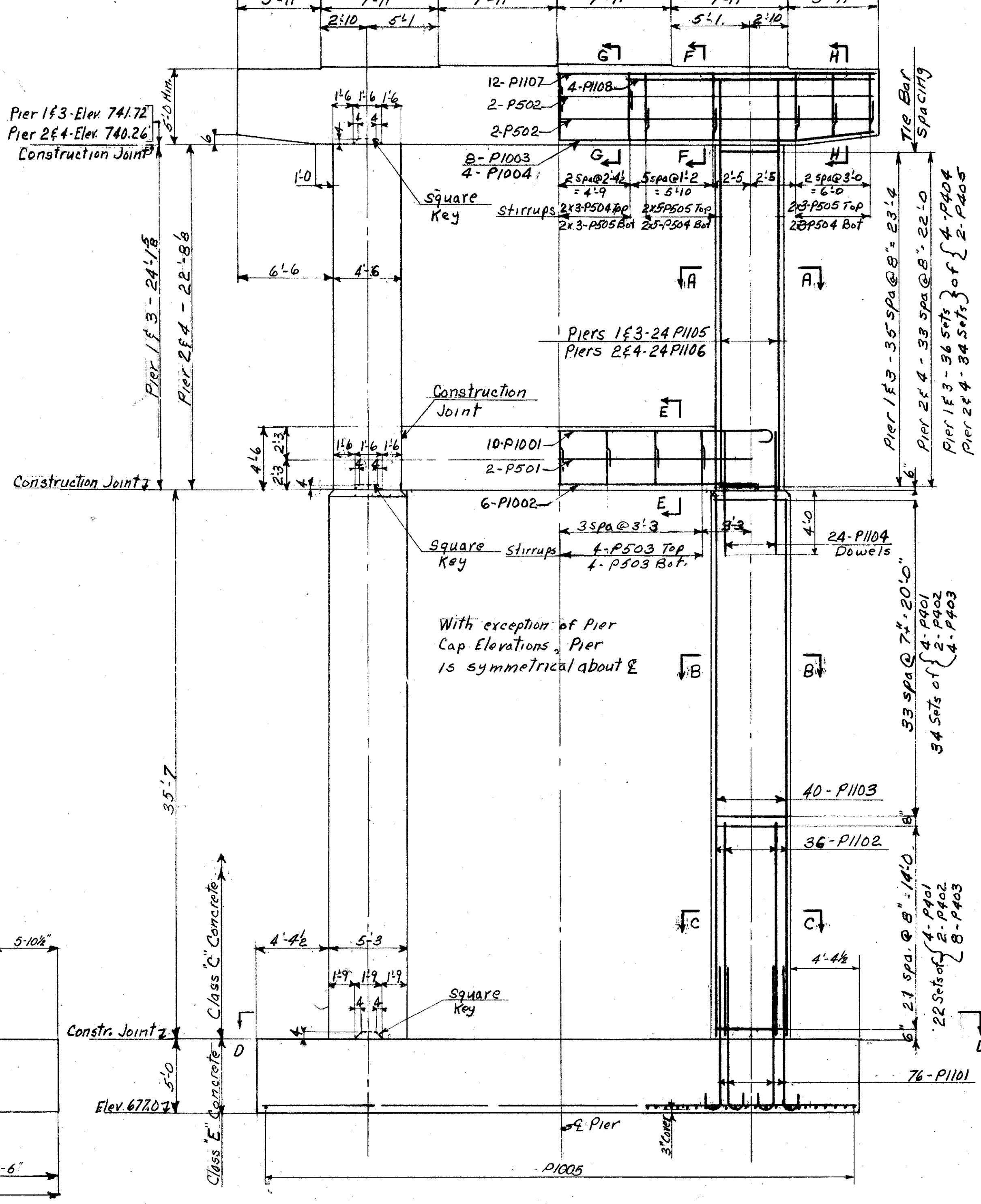
MICROFILMED
DEC 11 1987

FED. RD. DIVISION	STATE	PROJECT	458 488
2	OHIO	ACI-1103(21)	

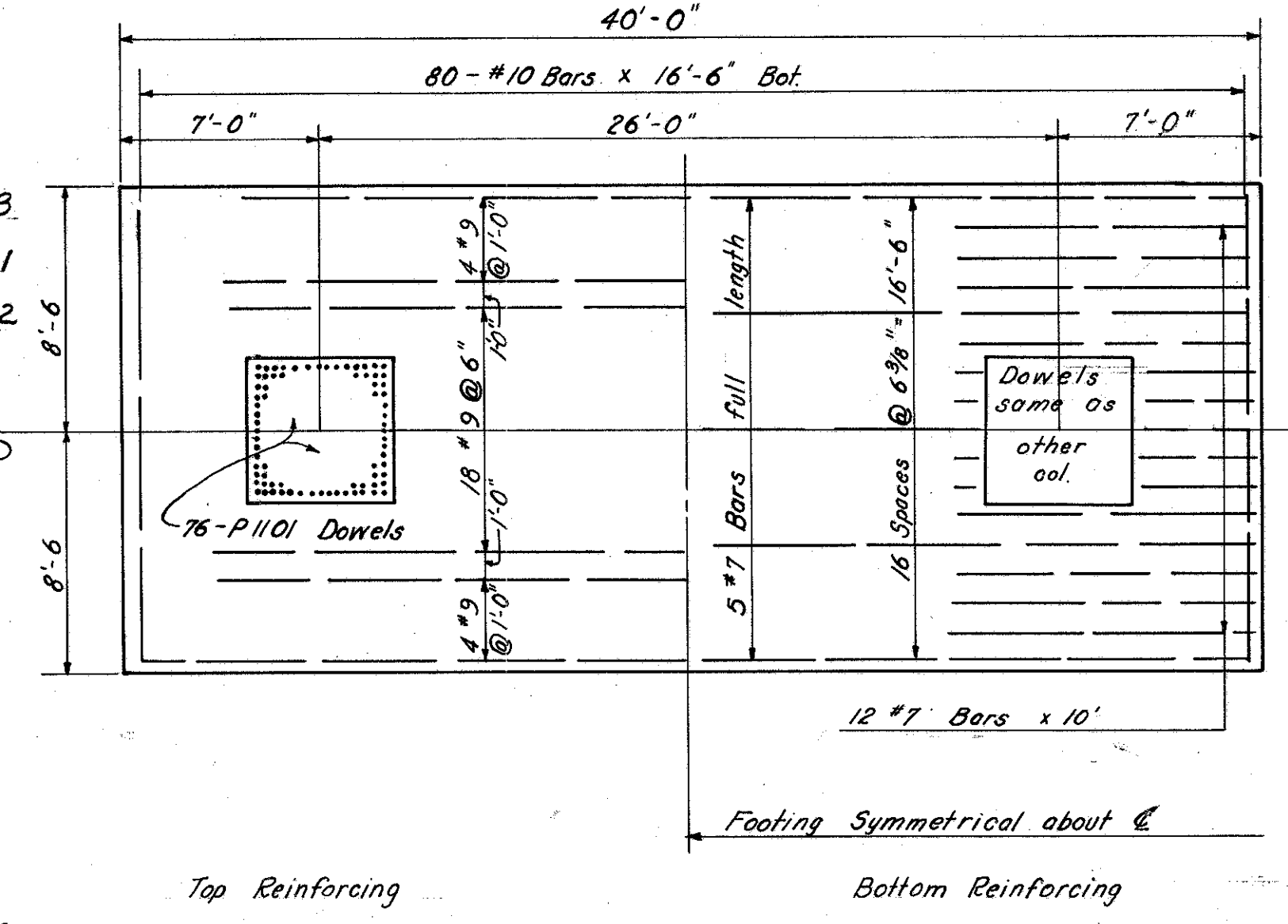
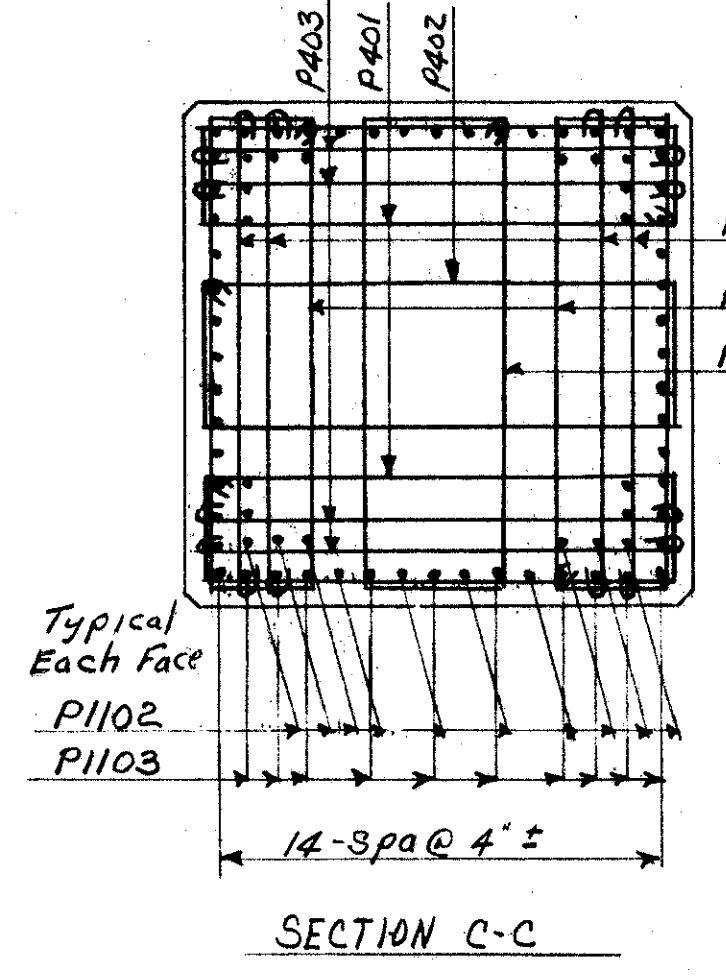
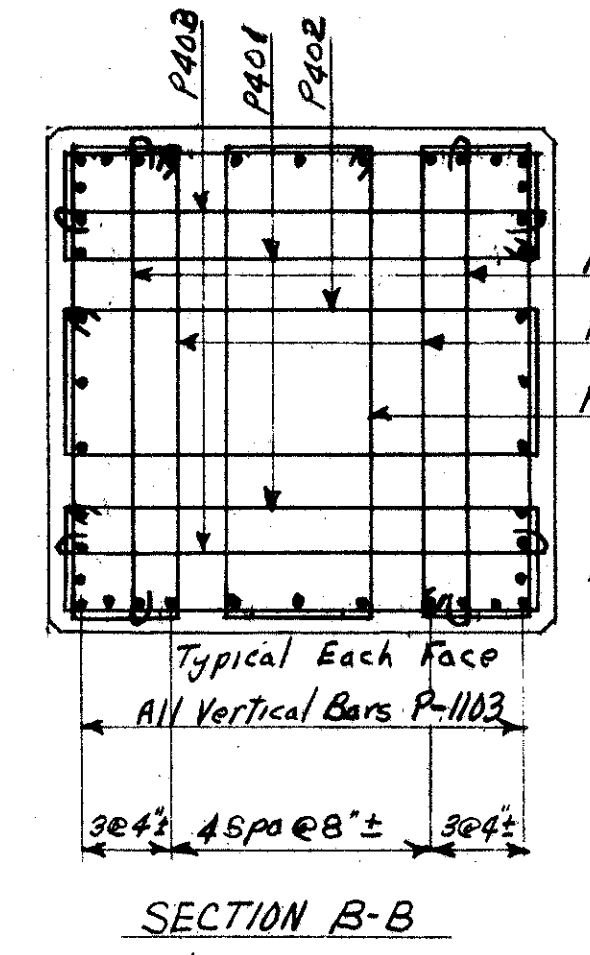
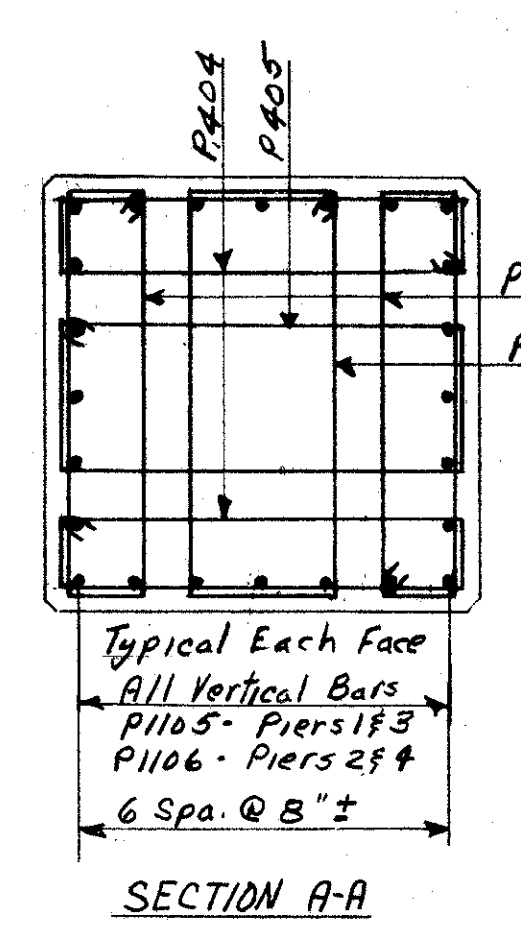
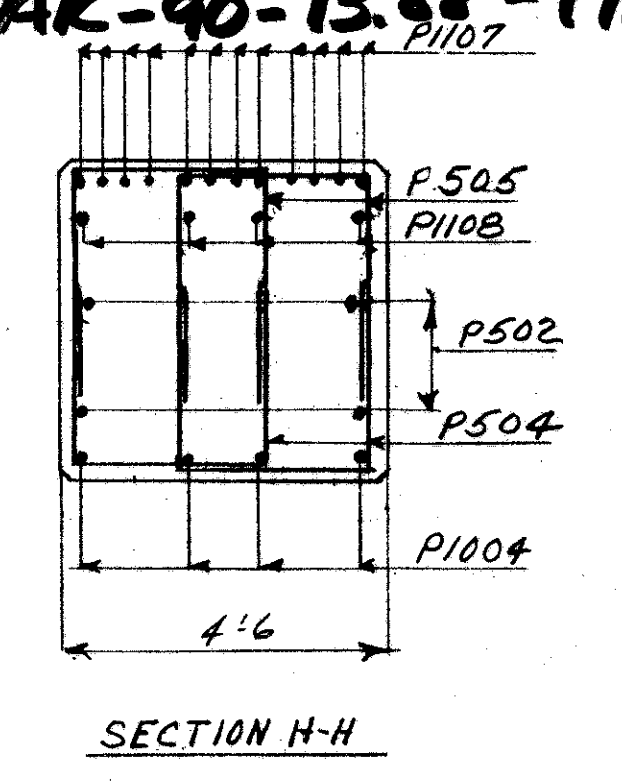
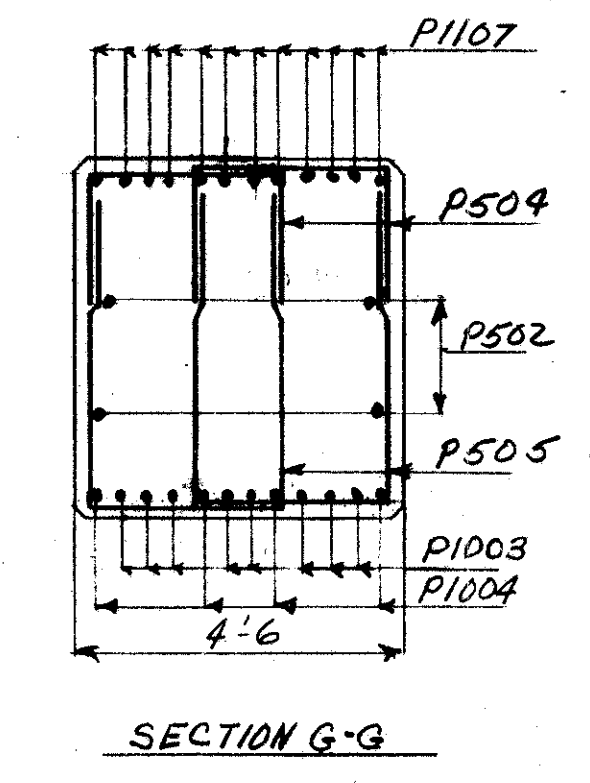
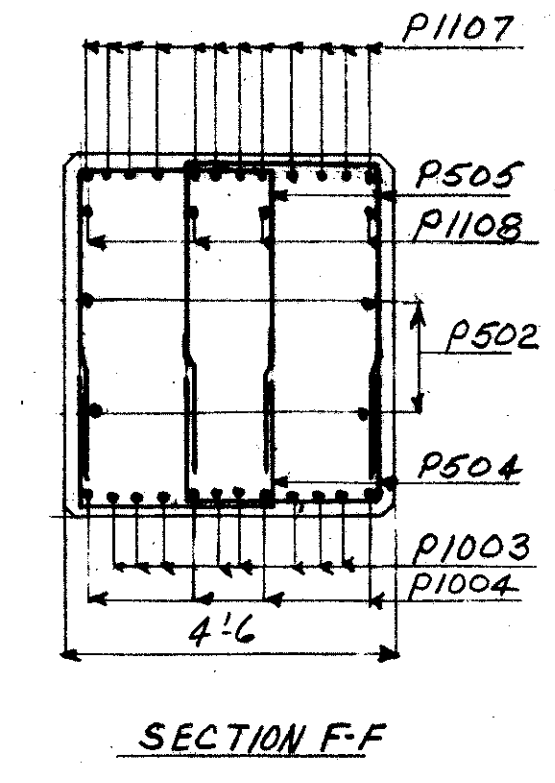
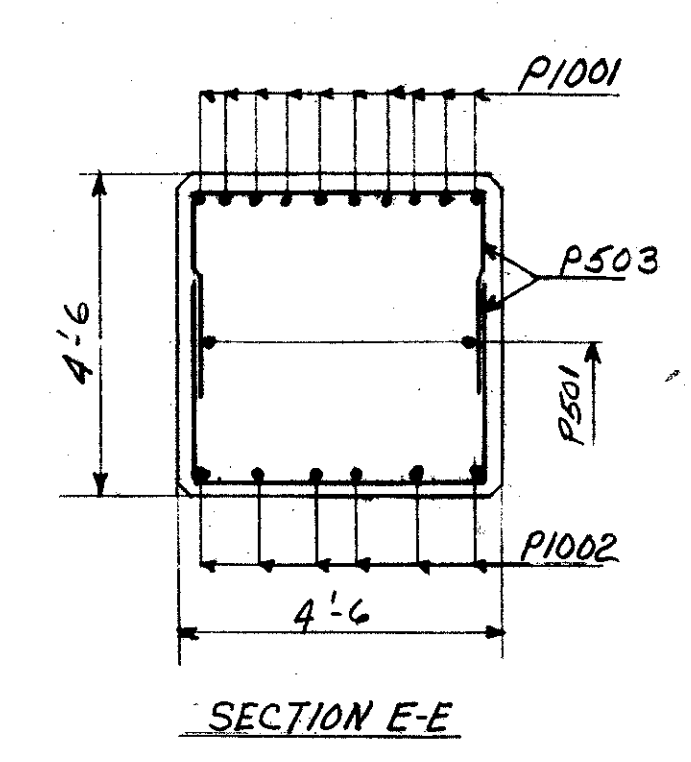
LAKE COUNTY
LAK-1-12.89
LAK-90-13.88-17.54



Pier Cap Elev. - Pier #1	746.72	746.85	746.97	747.06	746.94	746.81
Pier Cap Elev. - Pier #2	745.26	745.39	745.51	745.60	745.48	745.35
Pier Cap Elev. - Pier #3	746.81	746.94	747.06	746.97	746.85	746.72
Pier Cap Elev. - Pier #4	745.35	745.48	745.60	745.51	745.39	745.26



Typical Anchor Bolt Plan



NOTES
Special care shall be taken in placing reinforcing steel in the Pier Cap so that it will not interfere with the drilling of anchor bolt holes.
Chamfer all edges 2" unless shown otherwise.
Reinforcing cover = 2" unless shown otherwise.
Maximum foundation bearing pressure = 4.3 Ton/ft²
Ave. foundation pressure 2.6 tons/ft²
Footings shall extend a minimum of 2'-6" into shale or to elevation shown, whichever is lower.

SEC. 32 FED. AID PROJECT ACI-1103 (21)

PREPARED BY
CAPITOL ENGINEERING ASSOCIATES, DILLSBURG, PA.
FOR

STATE OF OHIO
DEPARTMENT OF HIGHWAYS

PIERS
BRIDGE NO. LAK-1-1542
S.R.1 OVER BIG CREEK
LAKE COUNTY STA. 461+90.00

DESIGNED	DRAWN	TRACED	CHECKED	REVISED	DATE	REVISED
JHT	JHT					