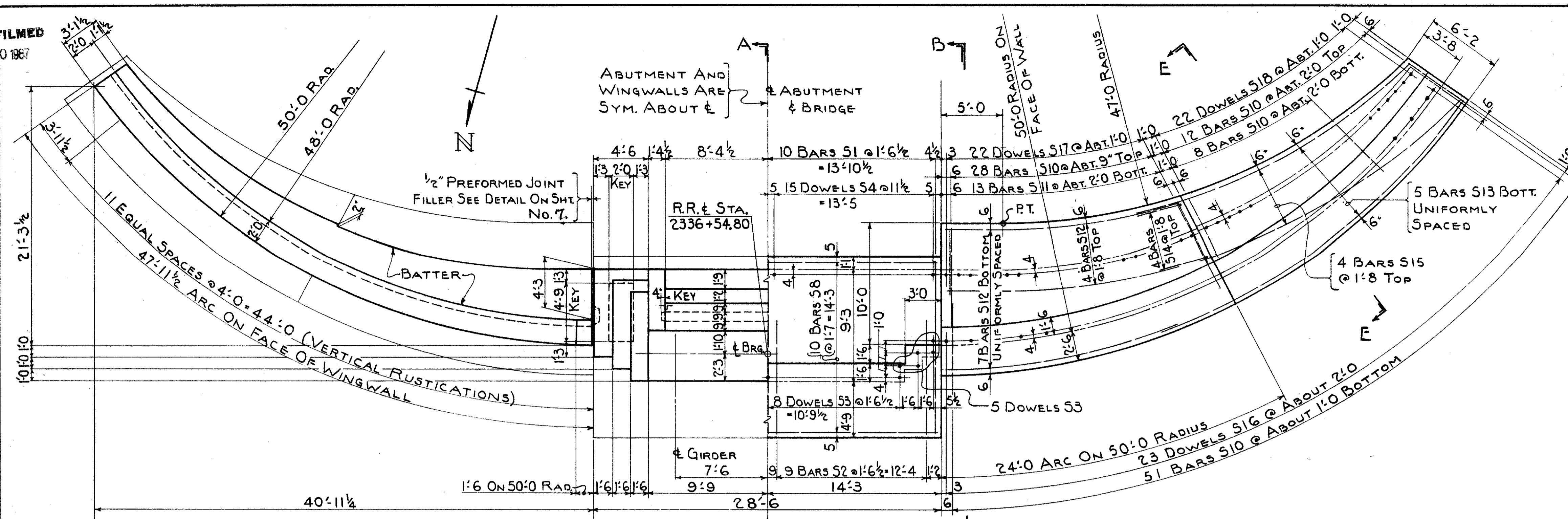


MICROFILMED  
DEC 10 1967

FED. RD. DIVISION	STATE	PROJECT	450
2	OHIO	ACI-1103(21)	488

LAKE COUNTY  
SEC. LAK-1-12.89



PLAN AT TOP OF ABUTMENT AND WING WALL  
SCALE 3/16" = 1'-0"

PLAN AT TOP OF FOOTING  
SCALE 3/16" = 1'-0"

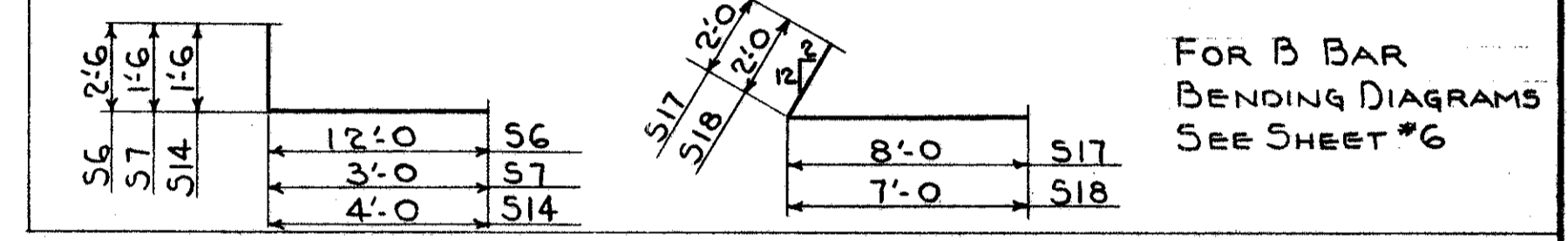
BILL OF REINFORCING BARS - SUBSTRUCTURE

MARK	NO.	SIZE	LENGTH	REMARKS	WEIGHT
S1	19	#10	14'-6"	STR.	
S2	18	#10	9'-6"		
S3	25	#6	4'-0"		
S4	30	#6	8'-0"		
S5	25	#17-0		STR.	
S6	24	#14-6		BENT	
S7	48	#4-6		BENT	
S8	10	#28-0		STR.	
S9	8	#15-0			
S10	198	#5-6			
S11	26	#8-0			
S12	22	#19-0			
S13	10	#31-6		STR.	
S14	8	#5-6		BENT	
S15	8	#26-0		STR.	
S16	46	#3-6		STR.	
S17	44	#10-0		BENT	
S18	44	#9-0		BENT	
S19	28	#23-6		STR.	
S20	4	#20-0			
S21	4	#16-0			
S22	4	#12-6			
S23	4	#9-0			
S24	4	#5-0			
S25	4	#2-6			
S26	4	#21-0			
S27	4	#15-6			
S28	4	#10-6			
S29	4	#5-6			
S30	2	#5-9			
S31	4	#6-3		STR.	

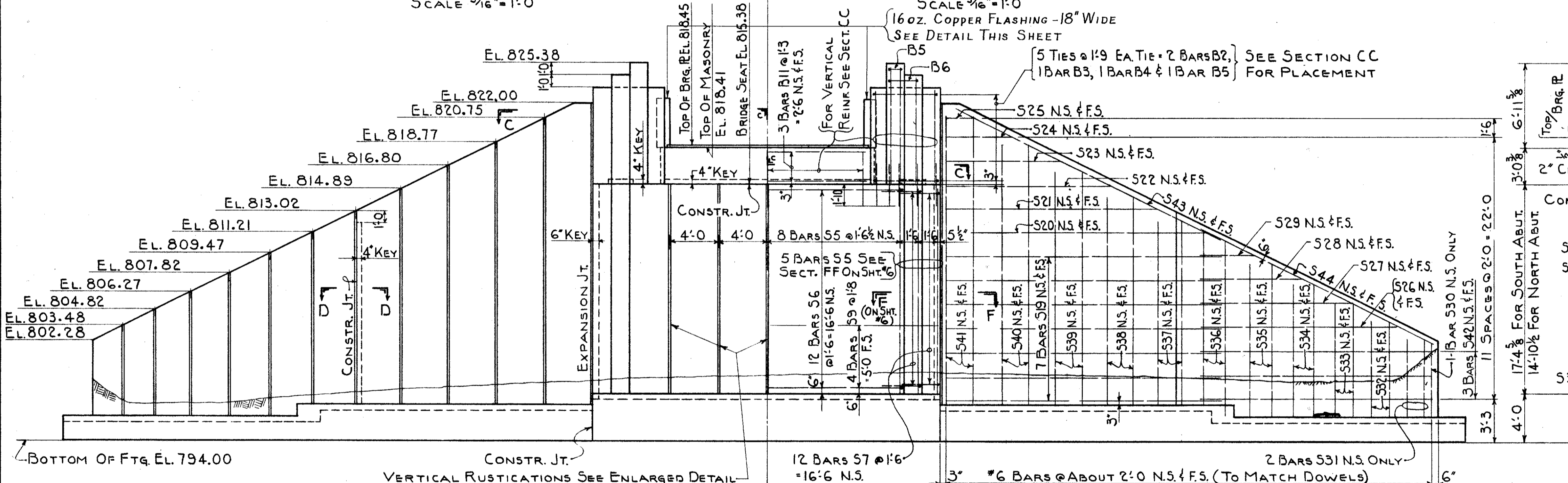
BILL OF REINFORCING BARS - SUBSTRUCTURE

MARK	NO.	SIZE	LENGTH	REMARKS	WEIGHT
B8	8	#6	9'-9"	STR.	
B9	4	#4	8'-9"		
B10	22	#4-7			
B11	6	#6	16'-3"		
B12	8	#6	7'-0"	STR.	
D1	48	#6	2'-0"	STR.	
B1	30	#6	3'-8"	STR.	
B2	20	#6	12'-8"	BENT	
B3	10	#6	10'-7 1/2"		
B4	10	#6	5'-4"		
B5	12	#6	9'-1 1/2"		
B6	2	#6	11'-5 1/2"	BENT	
B7	10	#6	7'-9"	STR.	

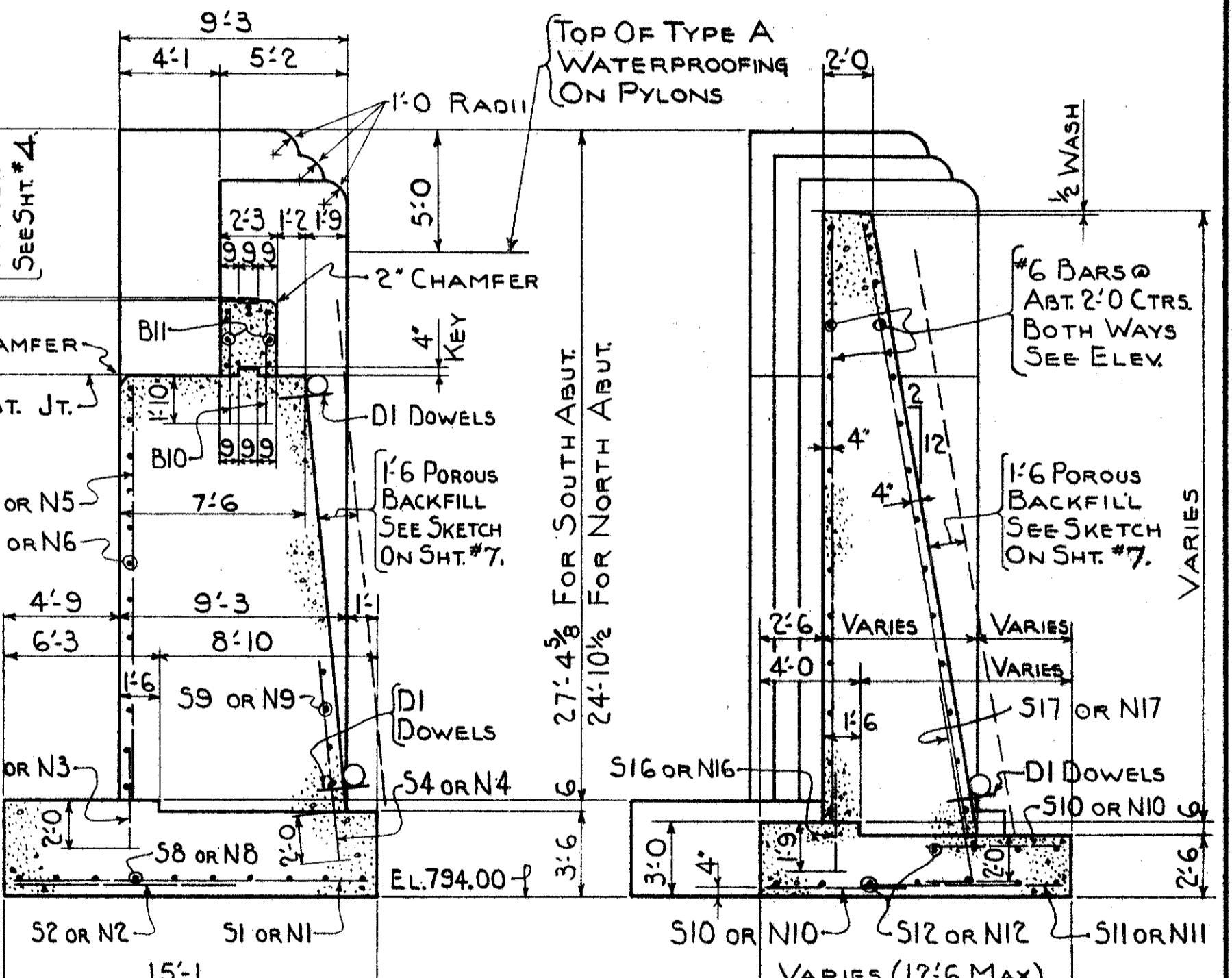
TOTAL REINFORCEMENT 13,685



FOR B BAR BENDING DIAGRAMS  
SEE SHEET #6

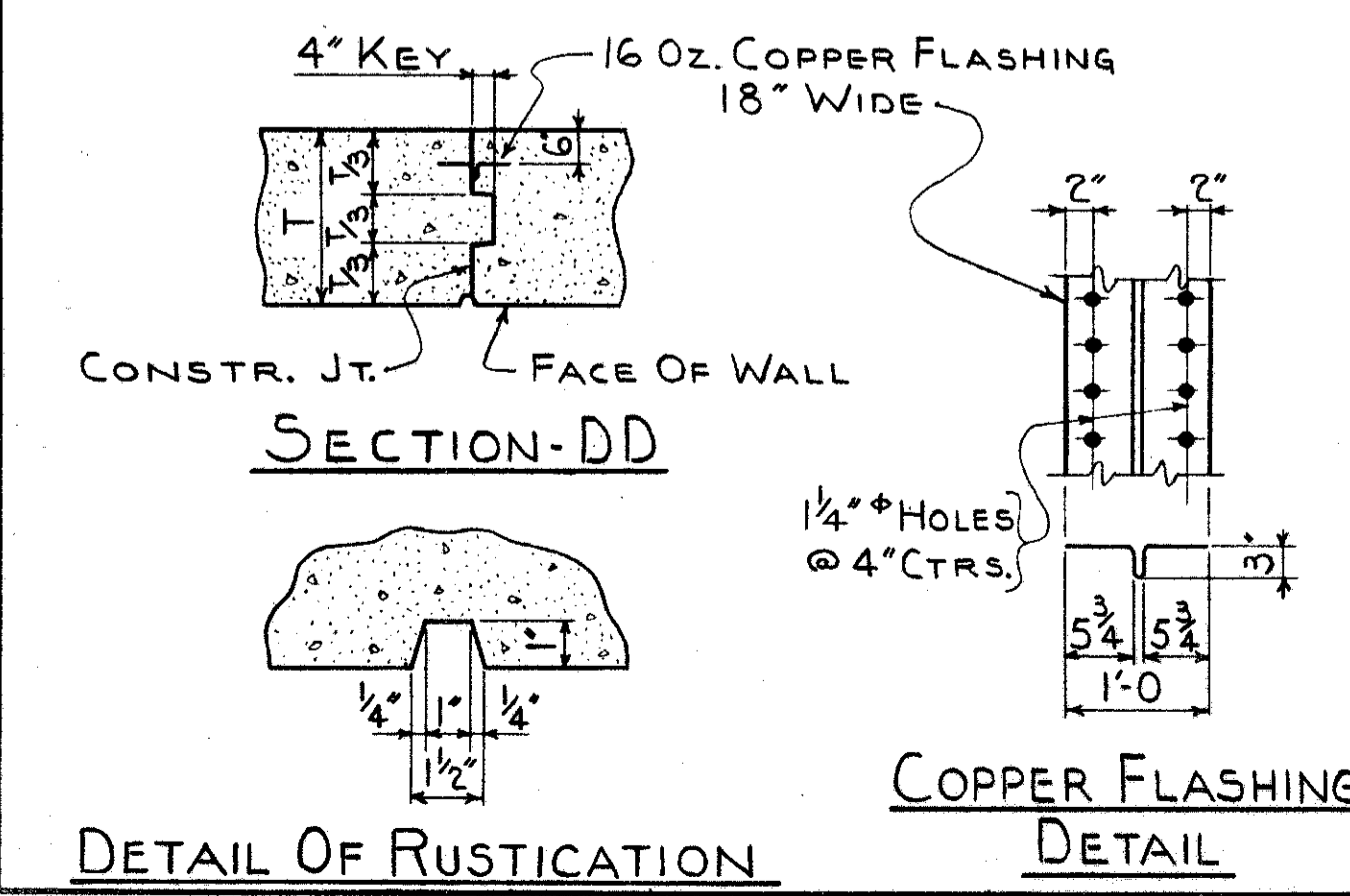


ELEVATION

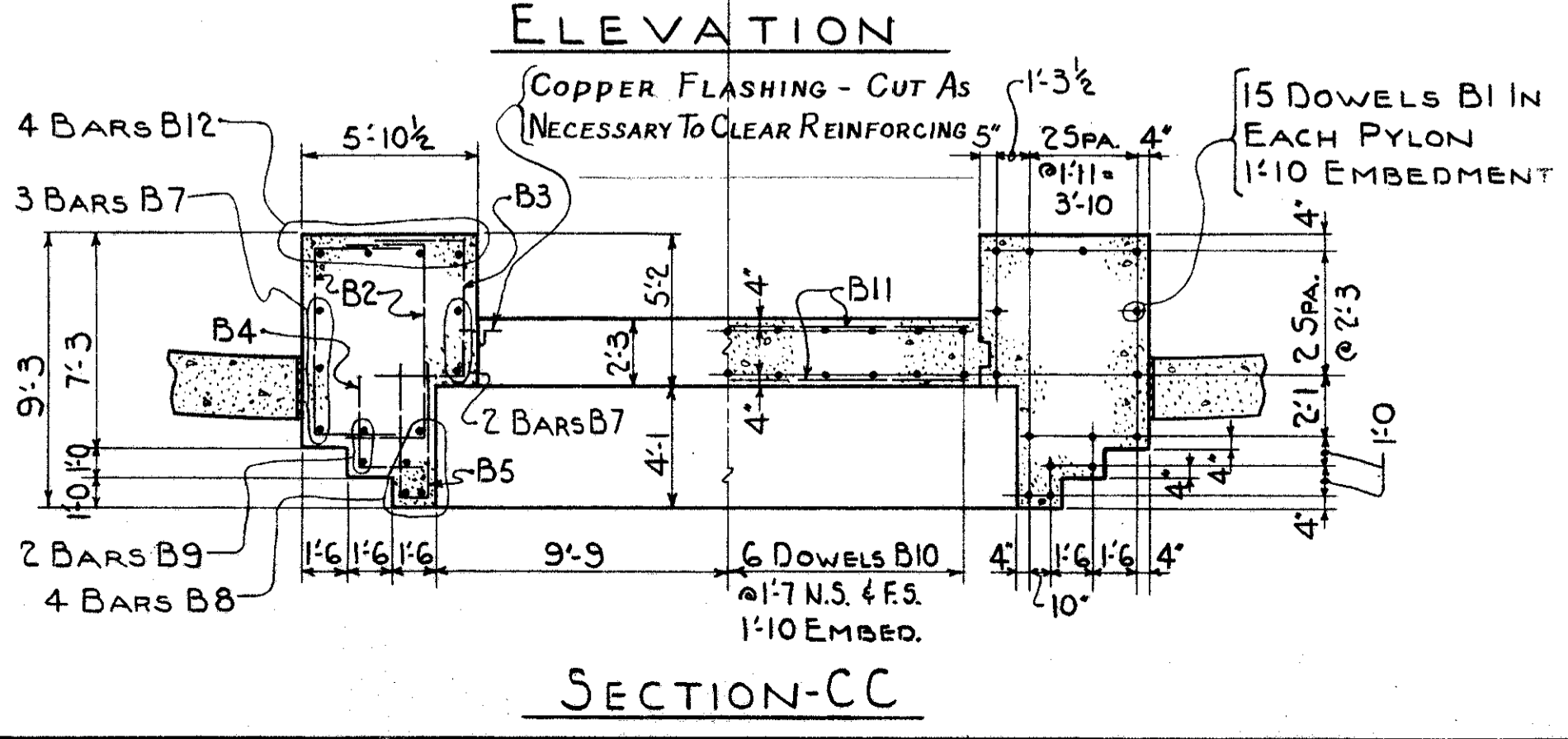


SECTION-AA

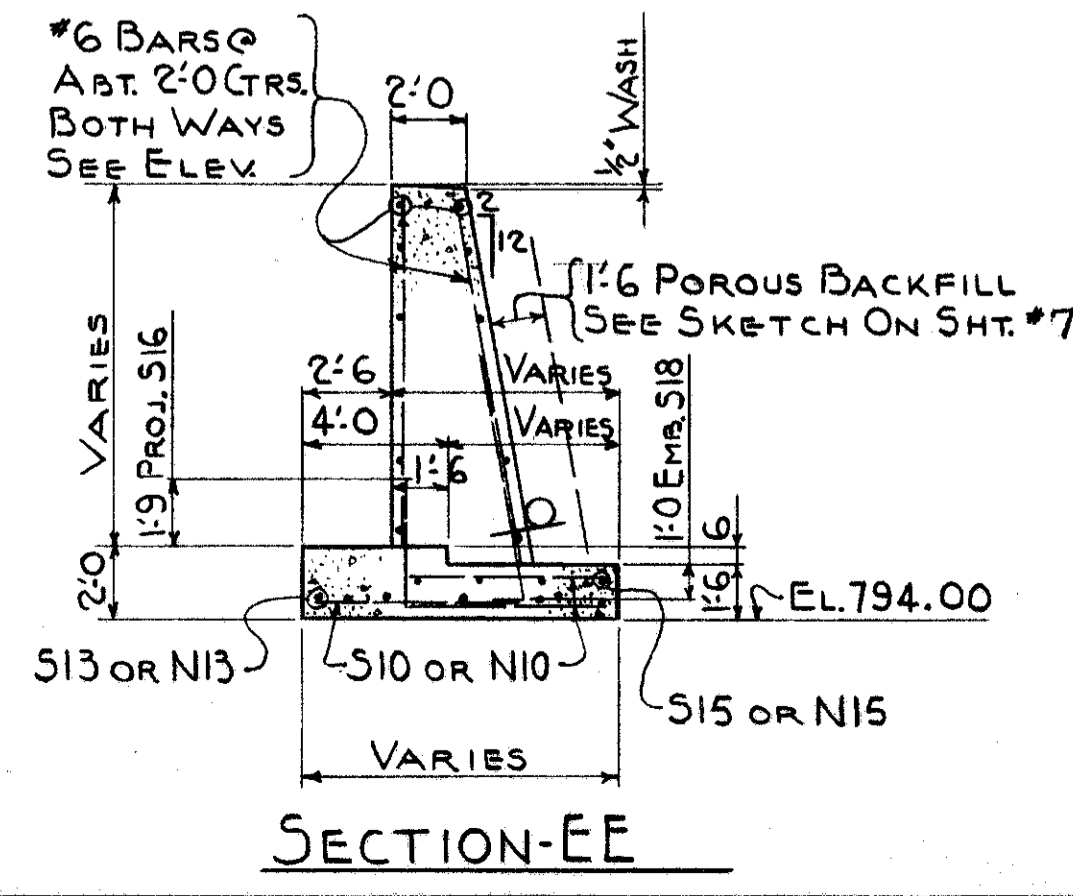
SECTION-BB



DETAIL OF RUSTICATION  
COPPER FLASHING DETAIL



SECTION-CC



SECTION-EE

MAX. SOIL PRESSURE ABUTMENT 4.4 TONS/SQ.FT.  
MAX. SOIL PRESSURE WINGWALLS 3.5 TONS/SQ.FT.

NOTE:  
FOR GENERAL PLAN, GENERAL NOTES  
AND QUANTITIES, SEE DRAWING NO. 2.

WORK THIS DRAWING WITH DRAWING #7.  
CONCRETE IN FOOTINGS CLASS "E".  
CONCRETE ABOVE FOOTINGS  
CLASS "C".  
ALL JOINTS SHALL BE FLASHED  
WITH COPPER FLASHING

SEC. C-32 FED. AID PROJ. NO. ACI-1103(21)

PREPARED BY  
CAPITOL ENGINEERING ASSOCIATES, DILLSBURG, PA.  
FOR

STATE OF OHIO  
DEPARTMENT OF HIGHWAYS

BRIDGE NO. LAK-1-1501  
S.R.I. UNDER B&O RAILROAD  
LAKE COUNTY  
SEC. LAK-1-II.59 STA. 438+18.95  
SOUTH ABUTMENT

DESIGNED	DRAWN	TRACED	CHECKED	REVISED DATE	REVIEWED
FHL	RMP	LHD	FAMUSO		