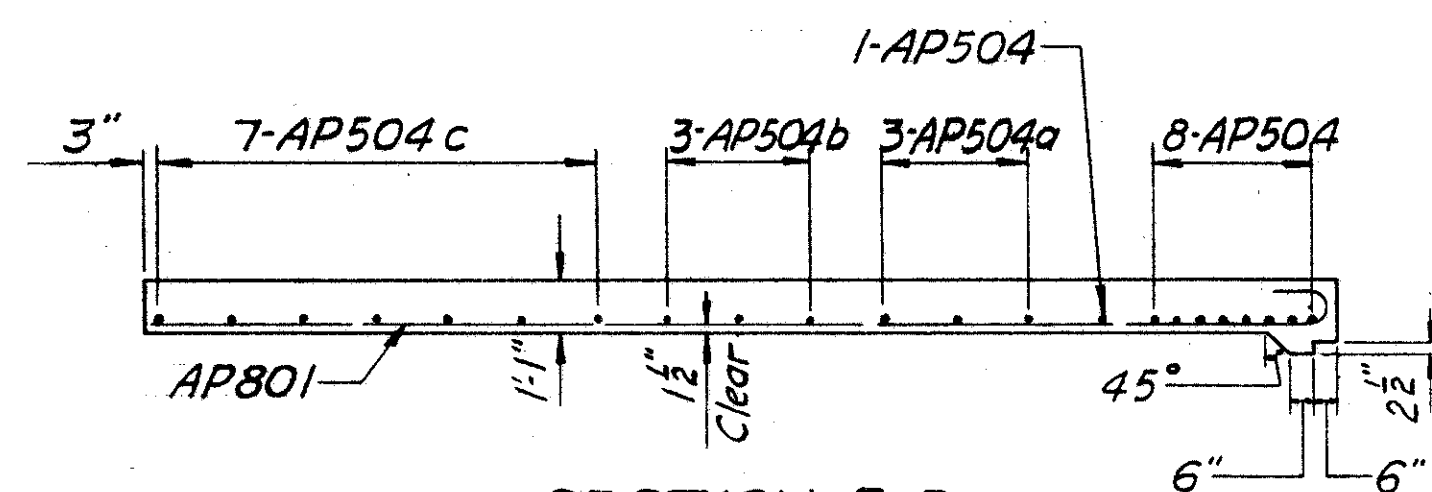
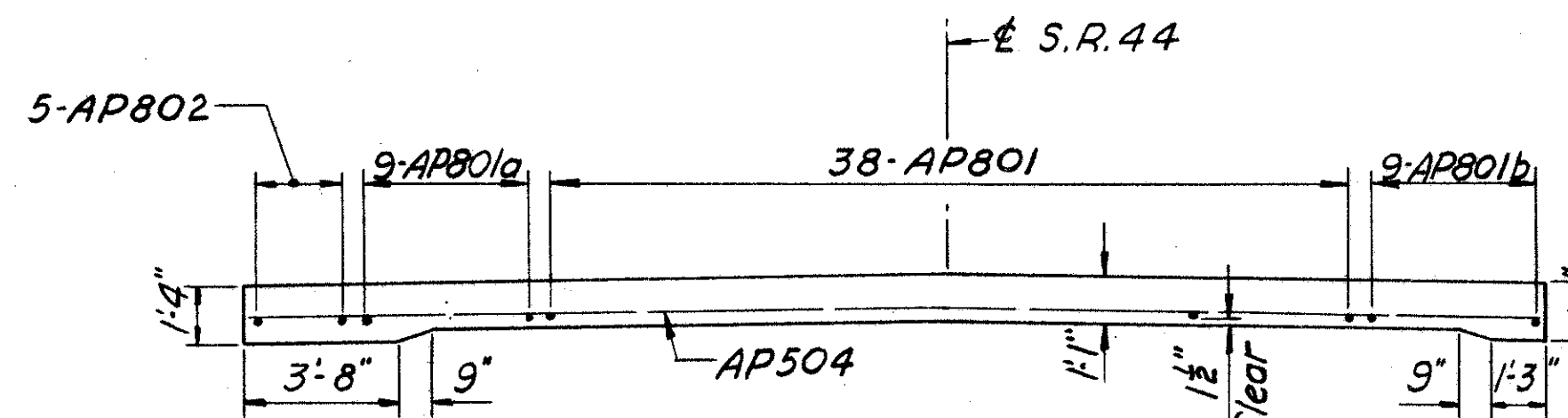


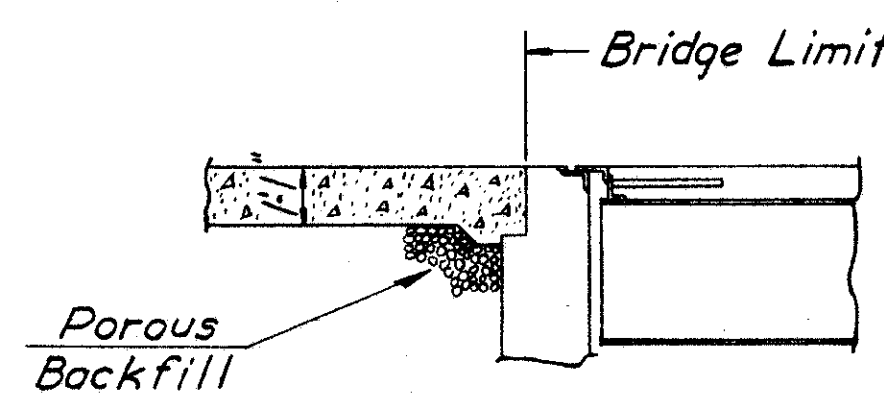
PLAN OF APPROACH SLAB



SECTION B-B



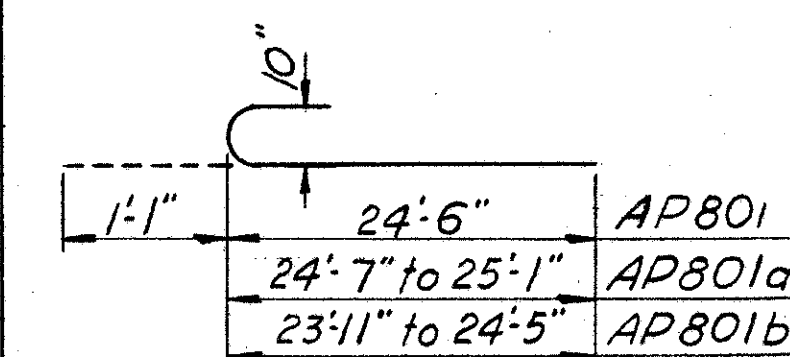
SECTION A-A



TYPICAL SECTION OF SLAB AT BRIDGE

BAR LIST FOR TWO APPROACH SLABS

MARK	No	SIZE	LENGTH	TYPE	REMARKS
AP801	76	8	25'-7"	Bent	
AP801a	18	8	25'-8" to 26'-2"	Bent	6 ea. Vary by 3"
AP801b	18	8	25'-0" to 25'-6"	Bent	6 ea. Vary by 3"
AP802	10	8	10'-6" to 16'-8"	Str.	2 @ 10'-6", 2 @ 11'-4", 2 @ 12'-10", 2 @ 14'-9", 2 @ 16'-8"
AP802a	10	8	8'-8" to 16'-0"	Str.	2 @ 8'-8", 2 @ 10'-0", 2 @ 11'-6", 2 @ 13'-6", 2 @ 16'-0"
AP504	18	5	27'-9"	Str.	
AP504a	6	5	28'-0" to 29'-0"	Str.	2 each Vary by 6"
AP504b	6	5	29'-11" to 31'-9"	Str.	2 each Vary by 11"
AP504c	14	5	32'-6"	Str.	



NOTES:

- Approach Slabs shall be Class "C" Concrete.
- Reinforcing steel and Premolded Expansion Joint Filler are included in Reinforced Concrete Approach Slab Item I-7 and is not paid for separately.

SEC. C-32 FED. AID PROJ. NO. ACI-1103 (21)

PREPARED BY
CAPITOL ENGINEERING ASSOCIATES, DILLSBURG, PA.
FOR

STATE OF OHIO
DEPARTMENT OF HIGHWAYS

APPROACH SLAB
BRIDGE NO. LAK-I-1493
S.R. 1 UNDER EXIST. S.R. 44
LAKE COUNTY

STA. 434 + 55.38

DESIGNED	DRAWN	TRACED	CHECKED	REVISED DATE	REVISED
C	C		f		