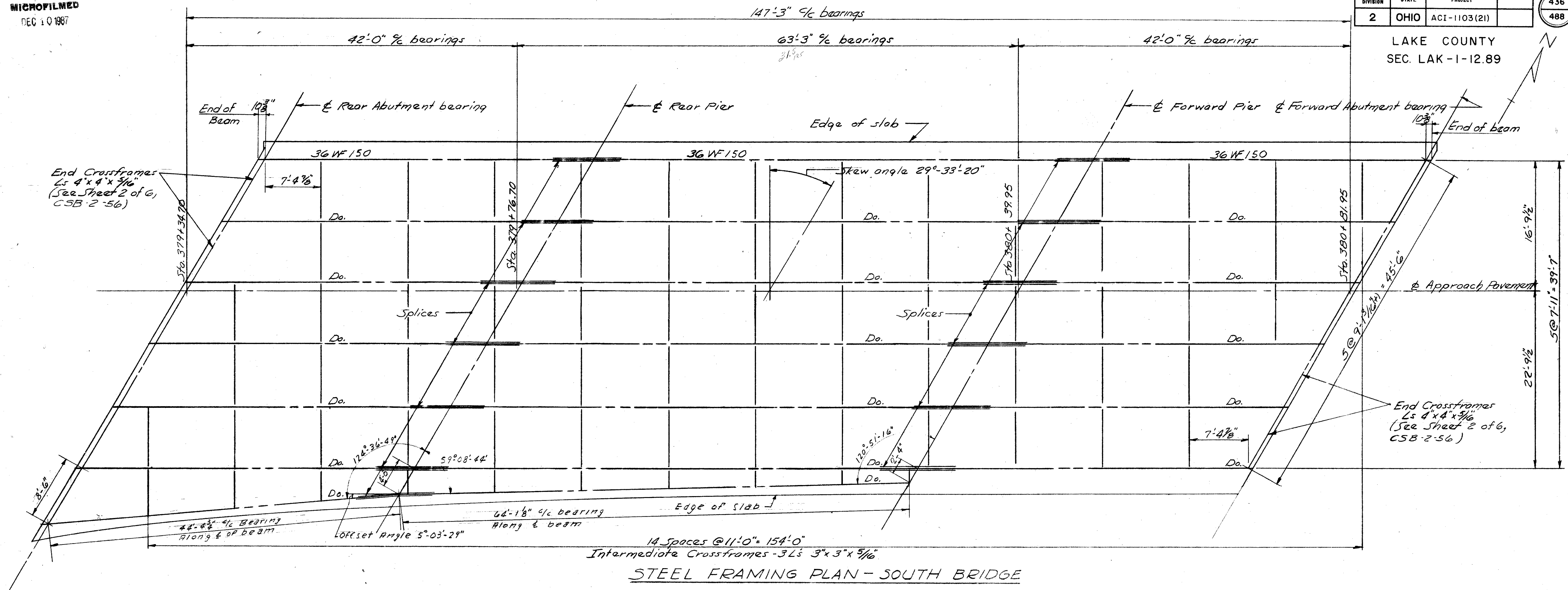


MICROFILMED
DEC 10 1987

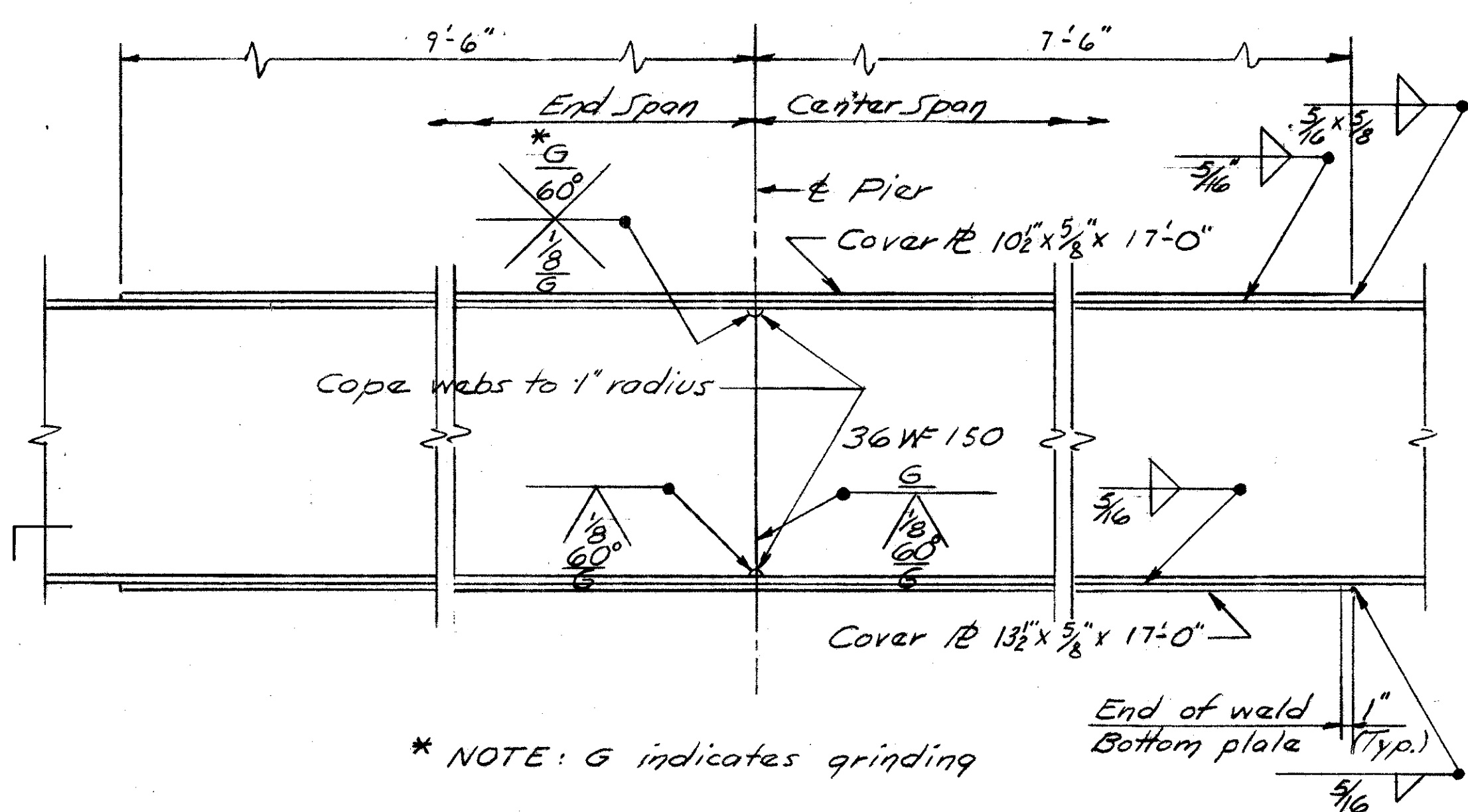
FED. RD. DIVISION	STATE	PROJECT	
2	OHIO	ACI-1103(21)	

436
488

LAKE COUNTY
SEC. LAK-1-12.89

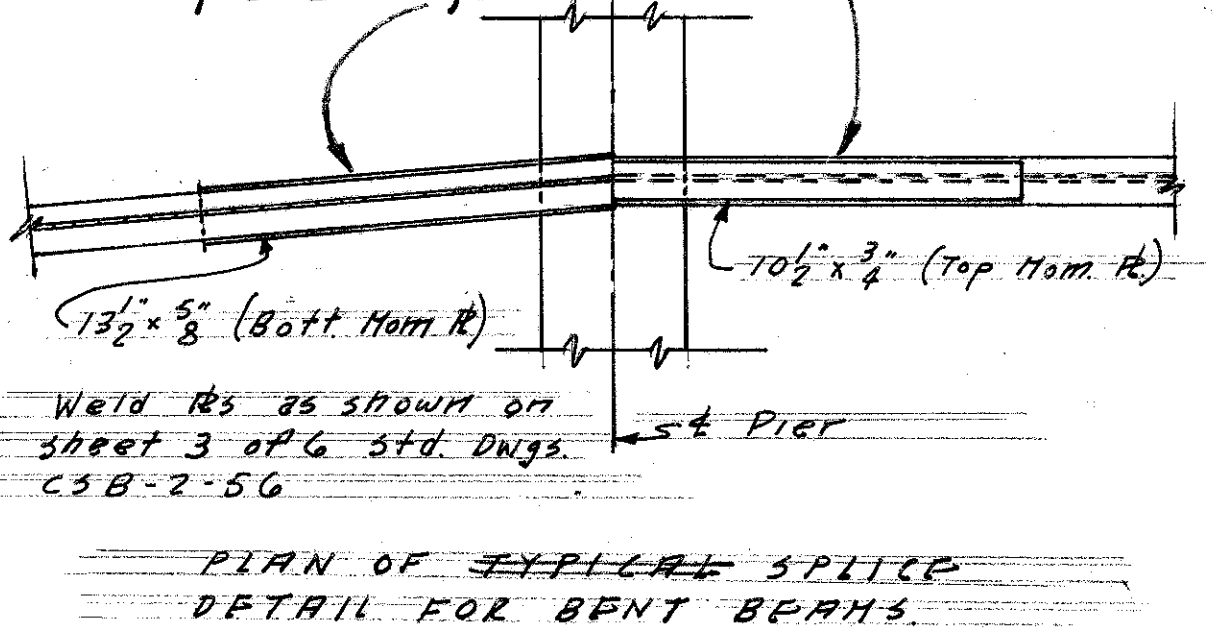


STEEL FRAMING PLAN - SOUTH BRIDGE



**BEAM SPLICE DETAILS
PART GIRDER ELEVATION - SOUTH BRIDGE**

These Moment Plates to be cut from one larger plate at rear piers for South Bridge & Ramp D Bridge.



DETAIL AT END OF BEAMS

BEAM SPLICE WELDING PROCEDURE

1. Raise the abutment ends of beams 9/16"
2. Butt-weld the beam flanges and web, using the following sequence: make one pass on each flange, then one on the web; repeat until welds are completed.
3. Weld the bottom and top moment plates.
4. Lower the beam ends to final position.

NOTE
See CSB-2-56, Sheet 3 of 6 for detail of bearing devices.

Revised 12-23-58

SEC. C-32 FED. AID PROJ. NO. ACI-1103(21)

PREPARED BY
CAPITOL ENGINEERING ASSOCIATES, DILLSBURG, PA.
FOR

STATE OF OHIO
DEPARTMENT OF HIGHWAYS

STEEL FRAMING
BRIDGE NO. LAK-1-1389
S.R.I. OVER AUBURN ROAD (SOUTH BRIDGE)
LAKE COUNTY

STA. 380 + 38.95

DESIGNED	DRAWN	TRACED	CHECKED	REVISED DATE	REVISED
SMcK	SMcK		JMM	12-23-58	