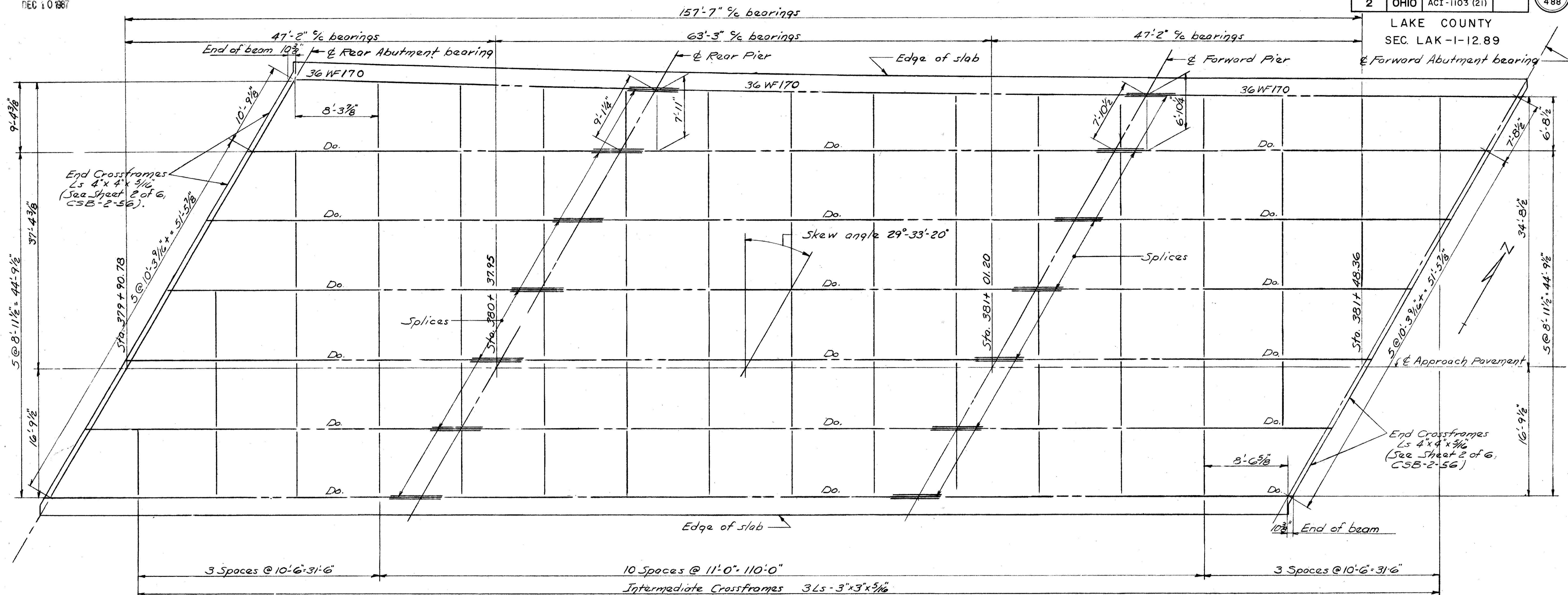
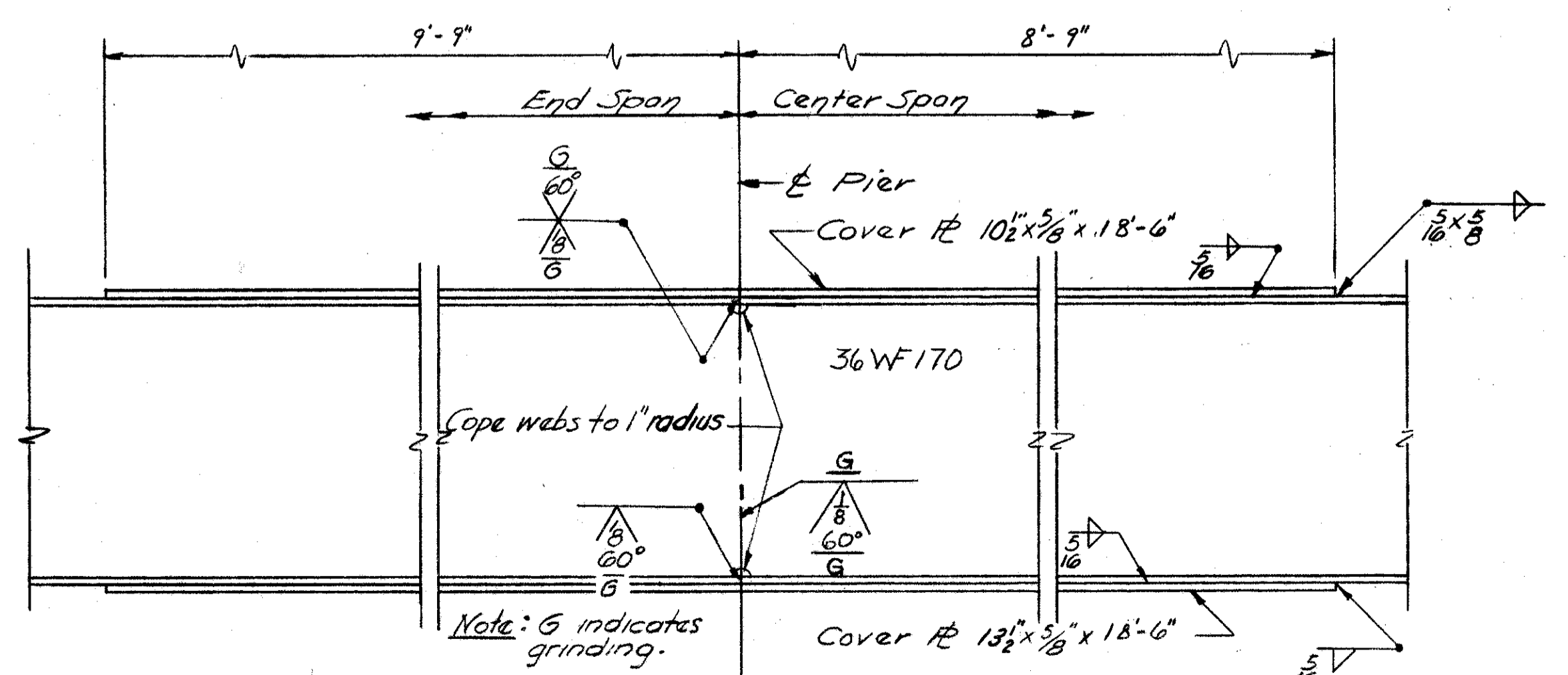


LAKE COUNTY
SEC. LAK-1-12.89



STEEL FRAMING PLAN - NORTH BRIDGE



PART BEAM ELEVATION - NORTH BRIDGE

BEAM SPLICE WELDING PROCEDURE

1. Raise the abutment ends of beams 1/2".
2. Butt-weld the beam flanges and web using the following sequence: make one pass on each flange, then one on the web; repeat until welds are completed.
3. Weld the bottom and top moment plates.
4. Lower the beam ends to final position.

NOTE:
See CSB-2-56, Sheet 3 of 6, for detail of bearing devices.

FOR PLAN OF SPLICE DETAIL
SEE SHEET NO. 436

SEC. C-32 FED. AID PROJ. NO. ACI-1103(21)

PREPARED BY
CAPITOL ENGINEERING ASSOCIATES, DILLSBURG, PA.
FOR

STATE OF OHIO
DEPARTMENT OF HIGHWAYS

STEEL FRAMING
BRIDGE NO. LAK-1-1389
S.R. OVER AUBURN ROAD (NORTH BRIDGE)
LAKE COUNTY
STA. 380 + 38.95

DESIGNED	DRAWN	TRACED	CHECKED	REVISED	DATE	REVISED
SMcK	SMcK		JMM			