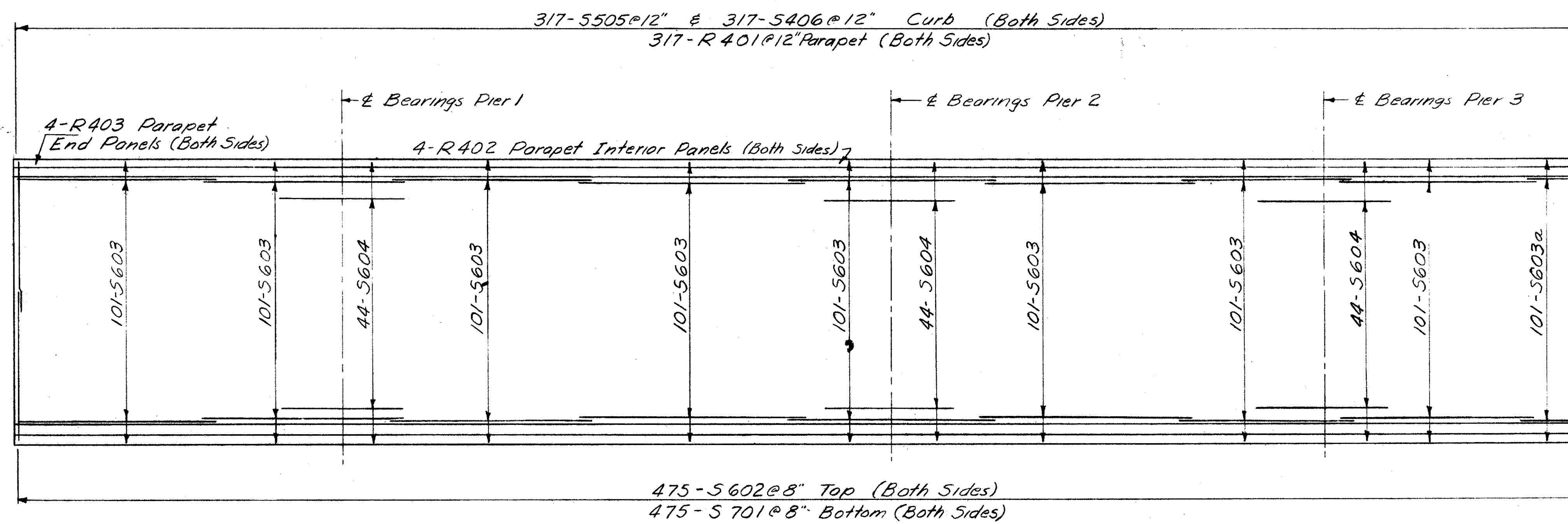


MICROFILMED
DEC 10 1987

FED. RD. DIVISION	STATE	PROJECT	
2	OHIO	ACI-1103 (21)	

417
488

LAKE COUNTY
SEC. LAK-1-12.89



DECK REINFORCEMENT PLAN-EAST BRIDGE

DECK PLACING PROCEDURE:
In placing the deck concrete, construction joints will be permitted, parallel to the transverse reinforcing steel and near the middle of any span. Because of the flow of curing water from the surface of previously-placed concrete, the sequence of pours shall be upgrade, starting at the lowest end (or ends) on an inclined grade or vertical curve (or at an intermediate low point for a sagged vertical curve.)

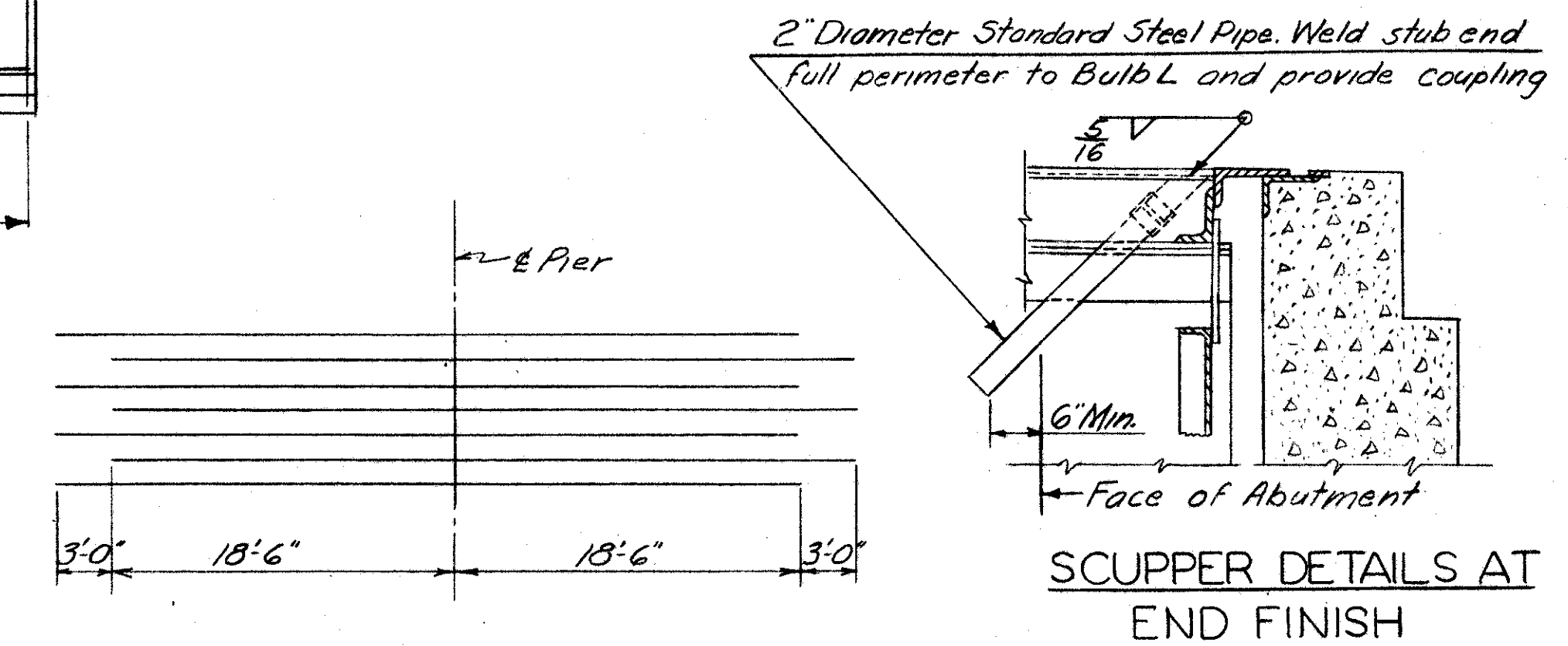
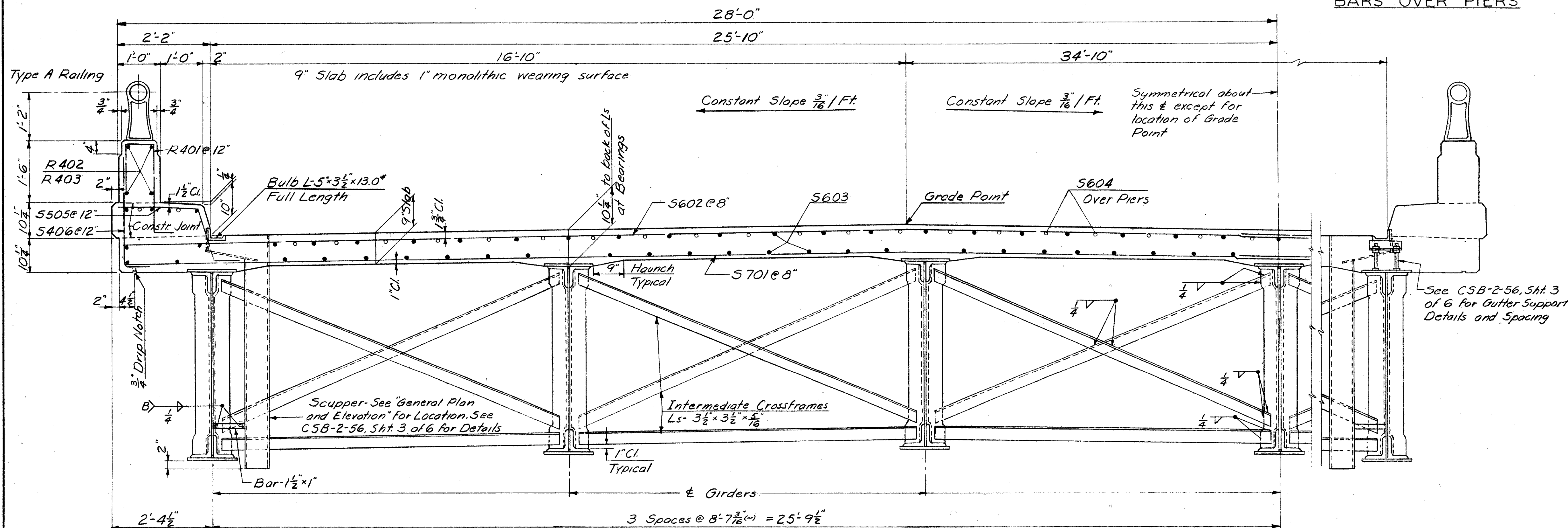


DIAGRAM SHOWING STAGGER OF S-604 BARS OVER PIERS



TYPICAL HALF SECTION-EAST BRIDGE

NOTE:
Fillers Shall be Placed in All Crossframes as Required

SEC. C-32 FED. AID PROJ. NO. ACI-1103 (21)

PREPARED BY
CAPITOL ENGINEERING ASSOCIATES, DILLSBURG, PA.
FOR

STATE OF OHIO
DEPARTMENT OF HIGHWAYS

DECK PLAN
BRIDGE NO. LAK-1-1370
S.R.1 UNDER RELOC S.R. 44 (EAST BRIDGE)
LAKE COUNTY

STA. 370+01.86

DESIGNED	DRAWN	TRACED	CHECKED	REVISED DATE	REVISED
PCW	PCW		JRO		