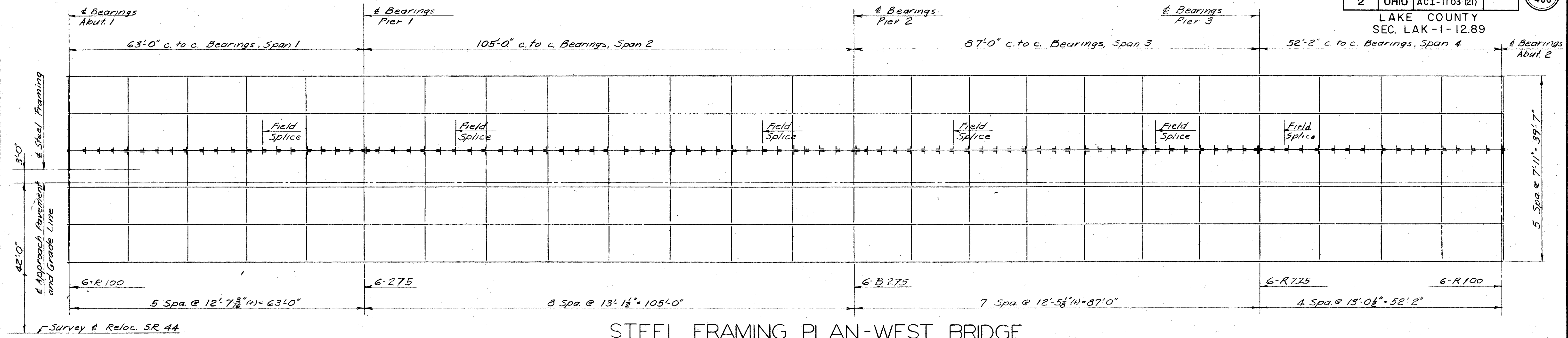


MICROFILMED  
DEC 10 1987

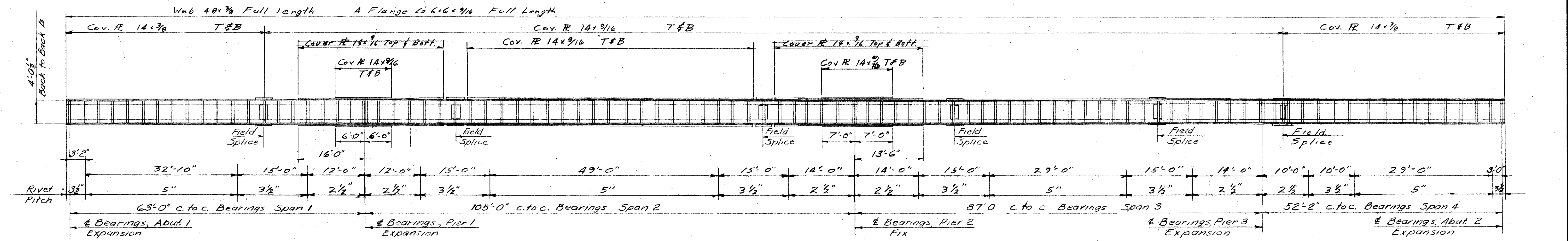
FED. RD. DIVISION	STATE	PROJECT	
2	OHIO	ACI-1103 (21)	

LAKE COUNTY  
SEC. LAK-1-12.89

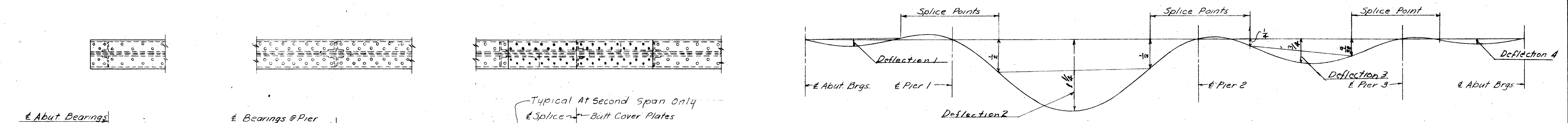
416  
488



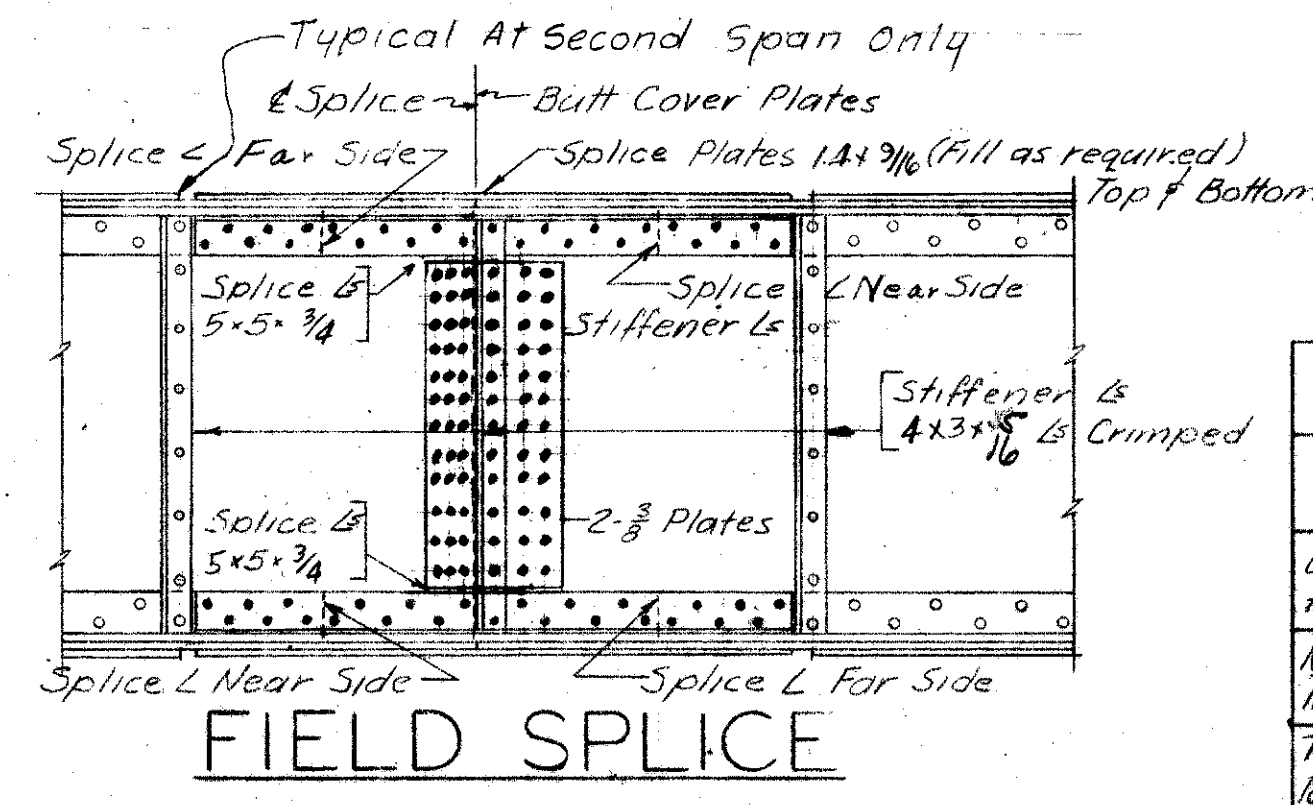
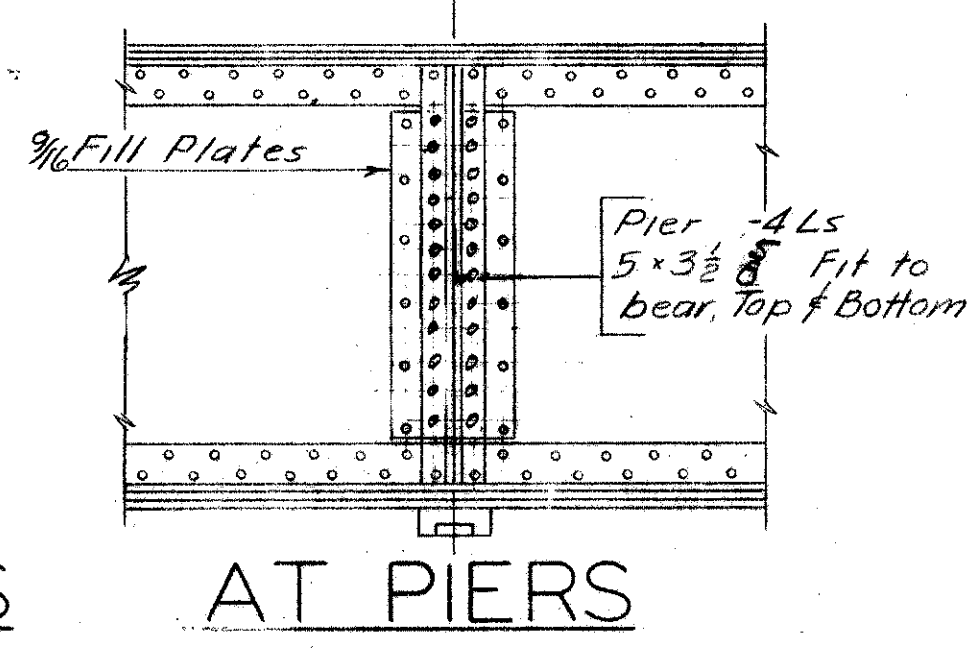
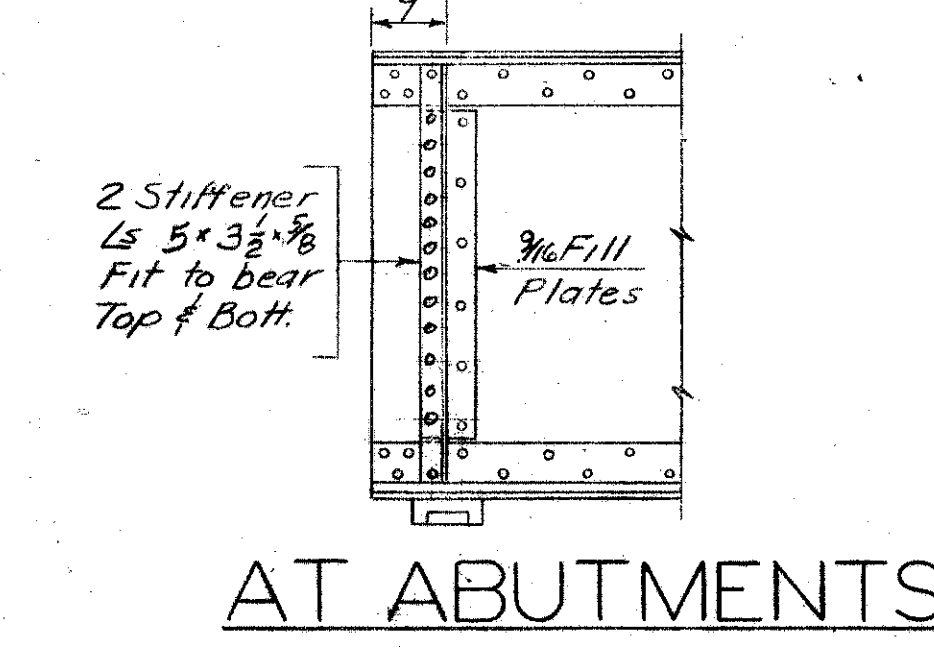
STEEL FRAMING PLAN-WEST BRIDGE



GIRDER ELEVATION-WEST BRIDGE



DEFLECTION DIAGRAM



	Curb Girders				Interior Girders			
	1	2	3	4	1	2	3	4
Deflection due to steel weight	—	3/8	1/2	—	—	3/8	1/2	—
Remaining dead load deflection	—	3/8	1/2	—	—	3/8	1/2	—
Total dead load deflection	—	1 1/4	3/4	—	—	1 1/4	3/4	—

NOTES:  
Abutments and Piers, Bearing Stiffeners are L5x3 1/2 x 3/8 on Fill Plates  
All intermediate stiffeners are L4x3x3/8 crimped except as noted.  
All dimensions are horizontal.  
All rivets 3/4".  
All intermediate crossframes L3x3 1/2 x 3/8.  
All end crossframes L4x4 1/2.  
All stiffeners shall be normal to Girder.

SEC. C-32 FED. AID PROJ. NO. ACI-1103 (21)

PREPARED BY  
CAPITOL ENGINEERING ASSOCIATES, DILLSBURG, PA.  
FOR

STATE OF OHIO  
DEPARTMENT OF HIGHWAYS

STEEL FRAMING  
BRIDGE NO. LAK-1-1370  
S.R. 1 UNDER RELOC. S.R. 44 (WEST BRIDGE)  
LAKE COUNTY  
SEC. LAK-1-11.59 STA. 370+01.86

DESIGNED	DRAWN	TRACED	CHECKED	REVISED	DATE	REVISED
J. Morgan	J. Morgan		J.R.O.			