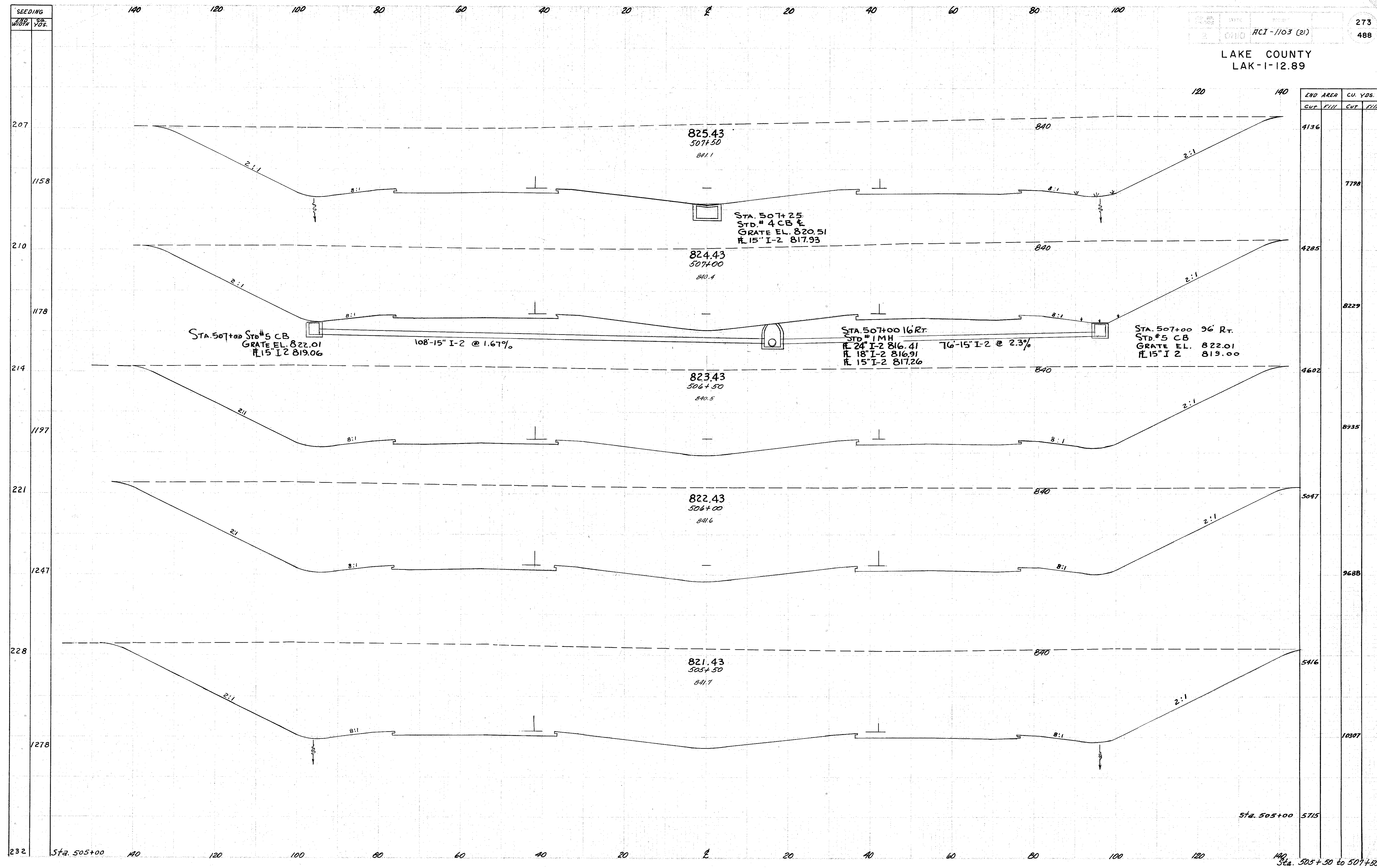


LAKE COUNTY  
LAK-1-12.89



END AREA		CU. YDS.	
Cut	Fill	Cut	Fill
4136			7798
4285			8229
4602			8935
5097			9688
5416			10307
	5715		

SEEDING  
END WIDTH YDS.  
232

140 120 100 80 60 40 20 0 20 40 60 80 100 120 140

207  
1158

210  
1178

214  
1197

221  
1247

228  
1278

Sta. 505+00 140 120 100 80 60 40 20 0 20 40 60 80 100 120 140

Sta. 505+00 to 507+50

STA. 507+00 STD #5 CB  
GRATE EL. 822.01  
#15" I-2 819.06

108'-15" I-2 @ 1.67%

STA. 507+00 16' RT.  
STD #1 MH  
#24" I-2 816.41  
#18" I-2 816.91  
#15" I-2 817.26

76'-15" I-2 @ 2.3%

STA. 507+00 36' RT.  
STD #5 CB  
GRATE EL. 822.01  
#15" I-2 819.00

825.43  
507+50  
841.1

824.43  
507+00  
840.4

823.43  
506+50  
840.5

822.43  
506+00  
841.6

821.43  
505+50  
841.7

Sta. 505+00 5715