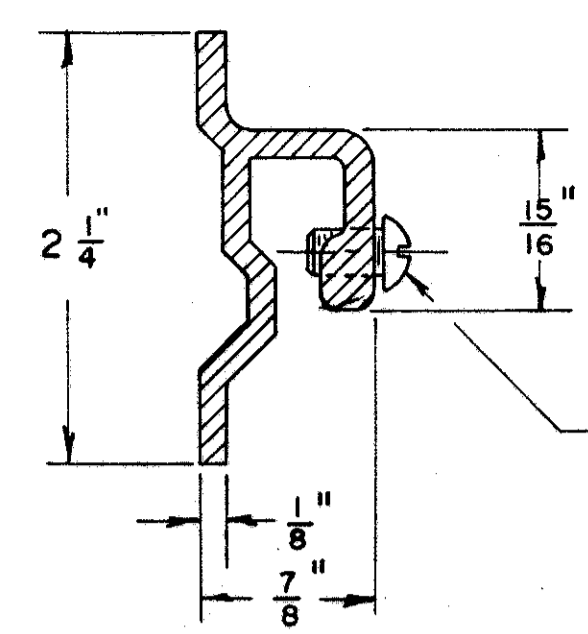


LAKE COUNTY
ASHTABULA COUNTY
LAK-1-12.89
ATB-1-0.00

NOTES

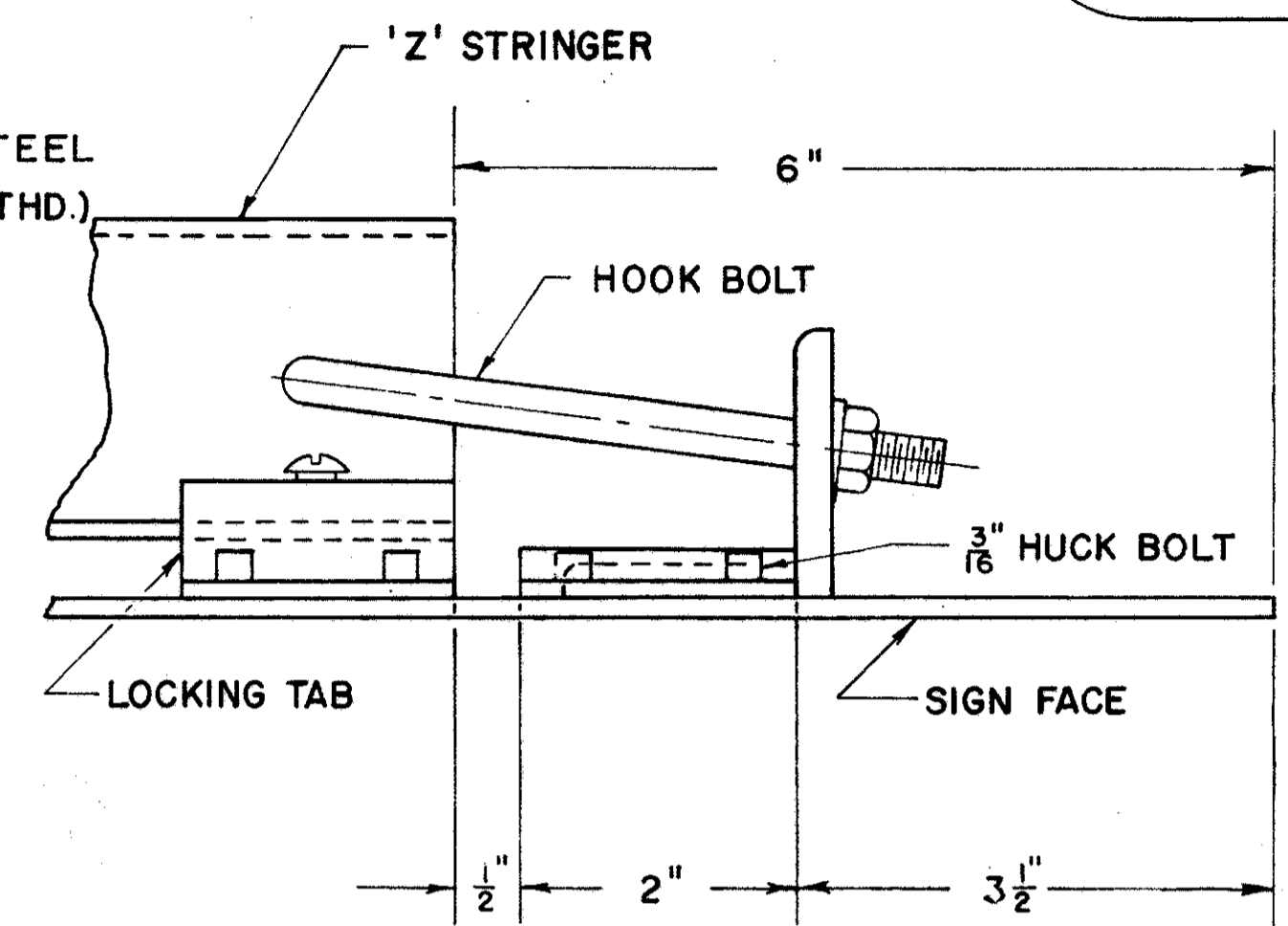
GENERAL:
THE ALUMINUM VERTICAL SHEET PANELS SHALL BE ASSEMBLED INTO ONE UNIT BEFORE ERECTING ON VERTICAL SUPPORT.

FABRICATION:
THE LOCKING TABS, POST CLAMPS, STIFFENERS, AND TAPERED ALUMINUM POLES MAY BE ALUMINUM CONFORMING TO A.S.T.M. B235, ALLOY GS10A-T6 (6063-T6).

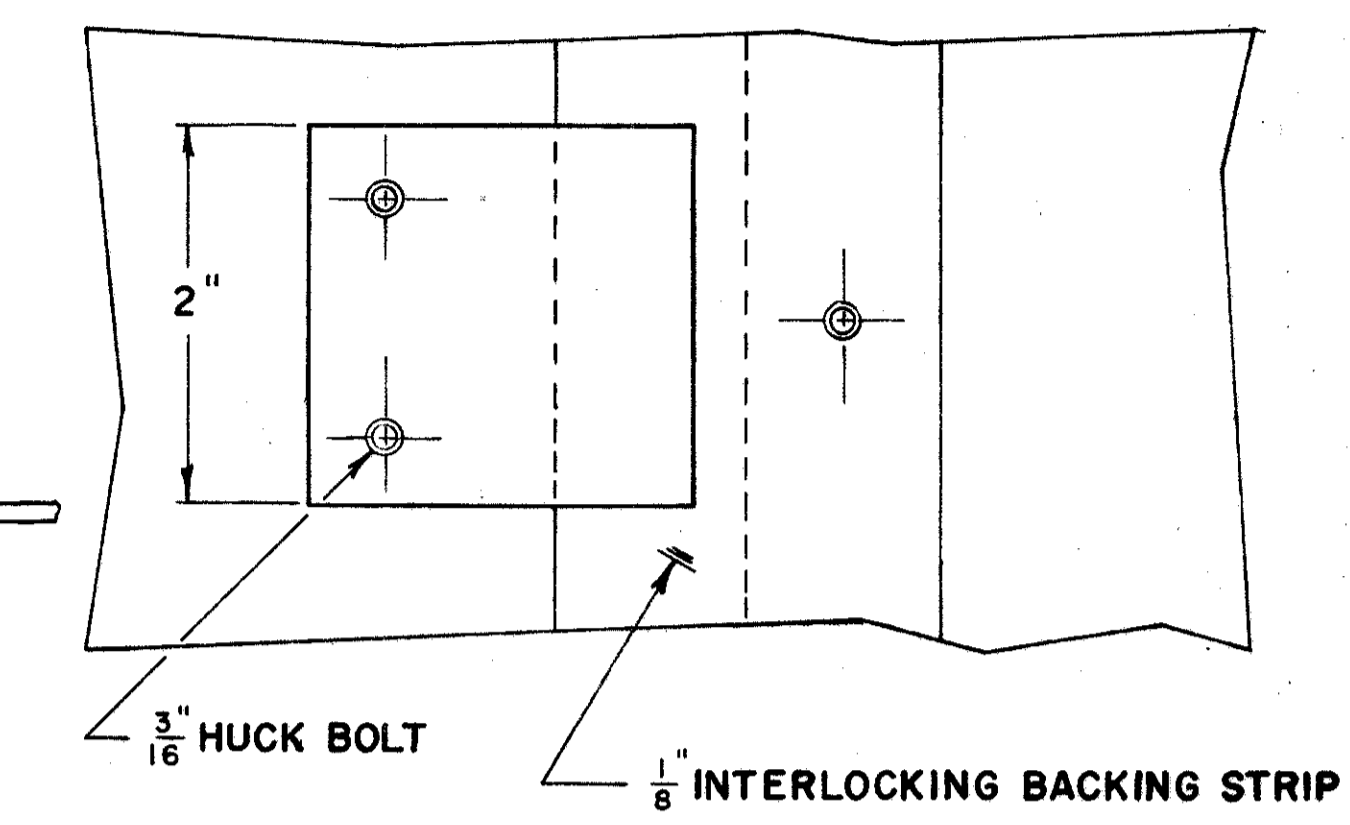
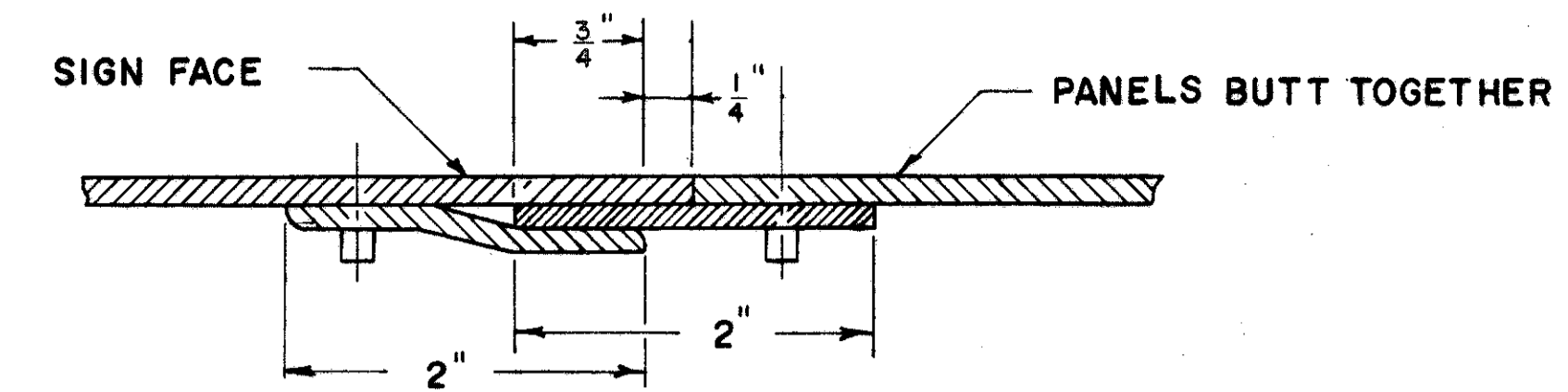
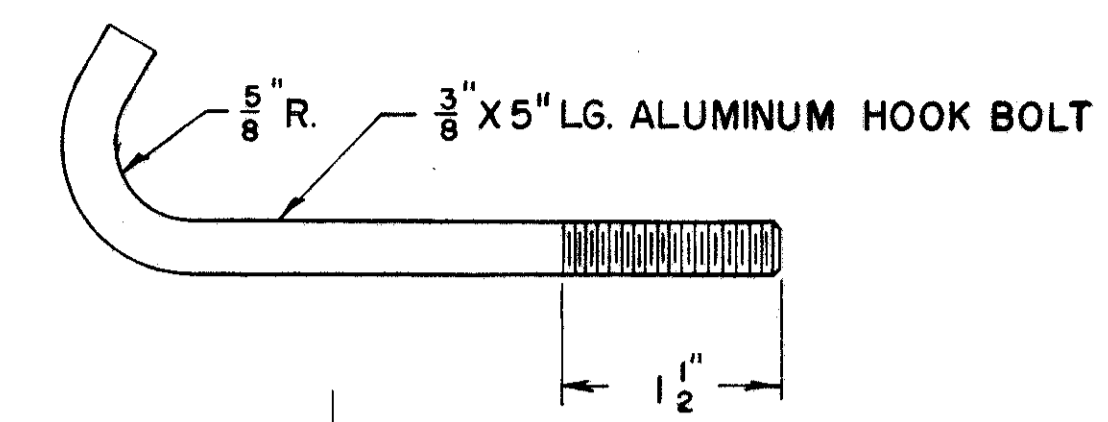


**DETAIL "B"
LOCKING TAB**

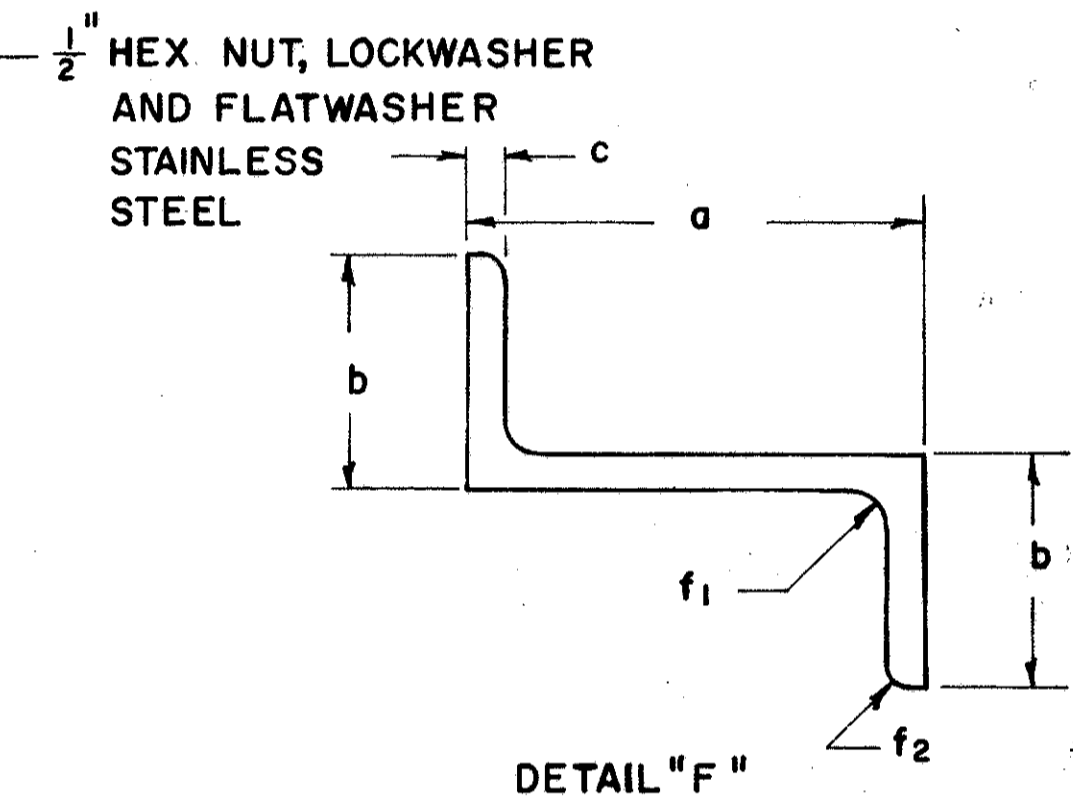
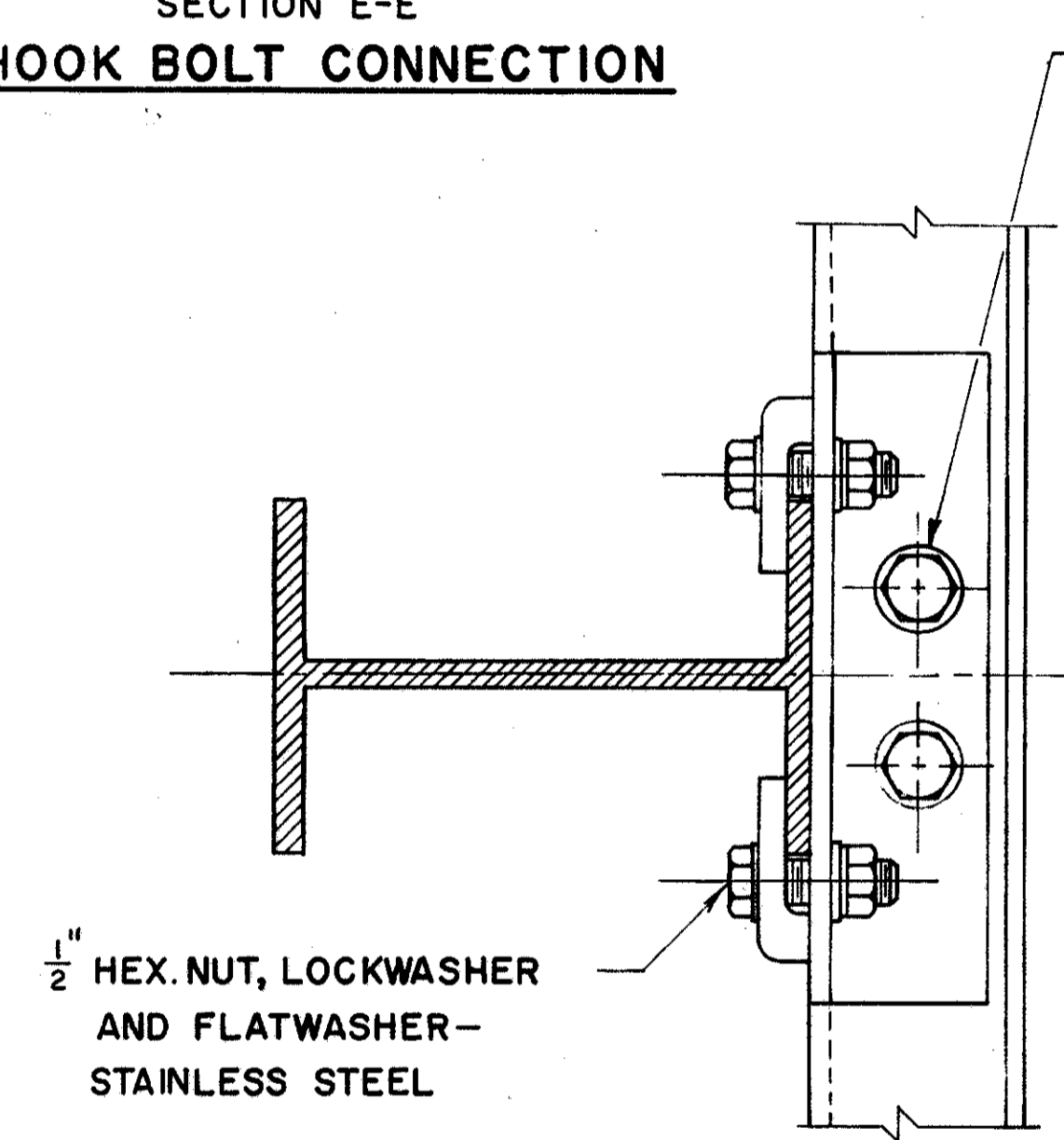
1/4" X 3/8" LG. STAINLESS STEEL SCREW (ROLLED THD.)



**SECTION E-E
HOOK BOLT CONNECTION**



DETAIL "C"

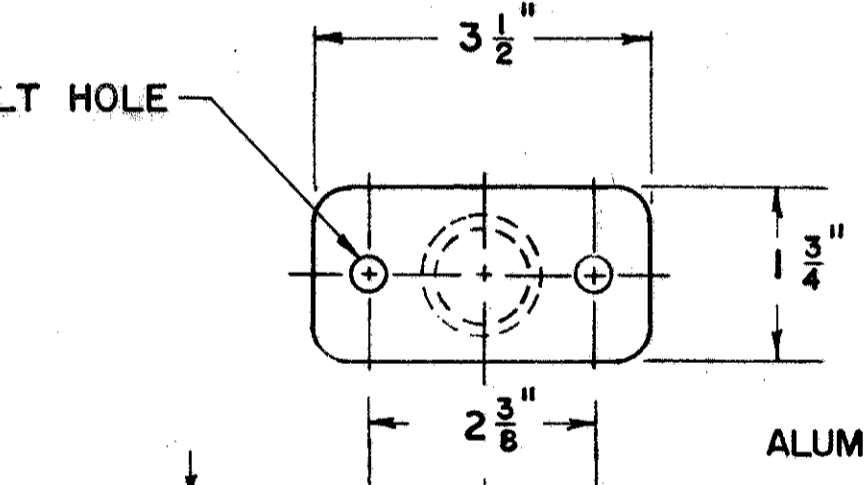
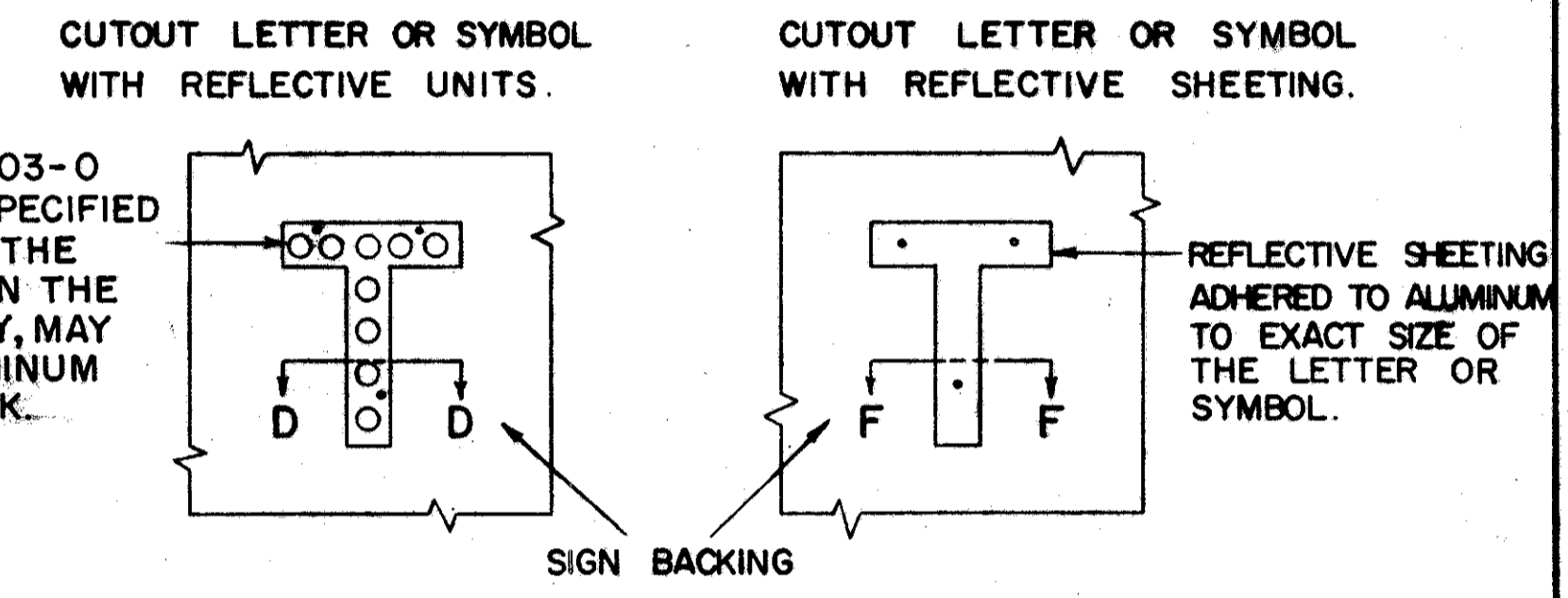


**DETAIL "F"
HORIZONTAL STRINGER**

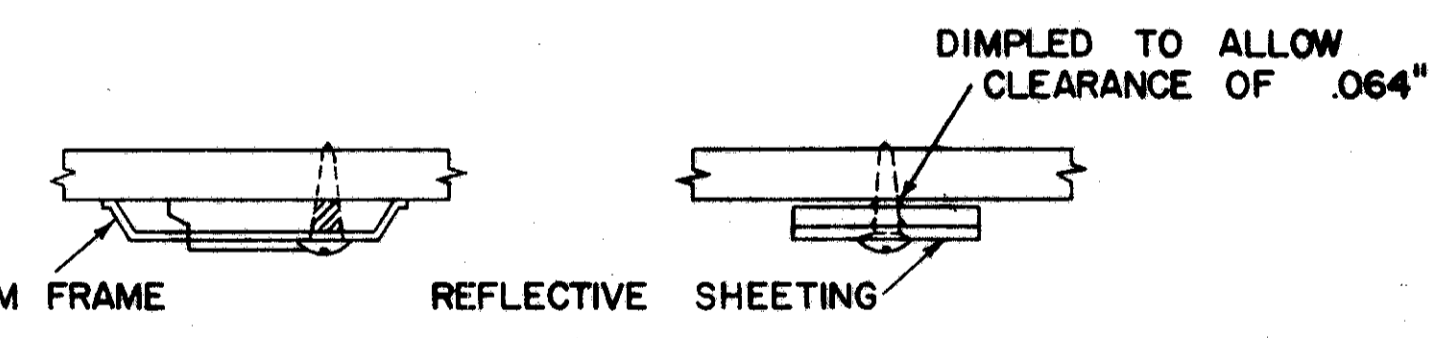
TYPE	a	b	c	f ₁	f ₂	wf.	SECTION MODULUS
A	2 3/8"	1 1/4"	3/16"	3/16"	1/8"	1.1 lb.	.584 in. ³
B	2 1/2"	1 3/8"	1/4"	1/4"	3/16"	1.4 lb.	.833 in. ³
C	3"	1 3/4"	1/4"	1/4"	3/16"	1.78 lb.	1.34 in. ³

IN LIEU OF THE 3003-O ALUMINUM FRAME SPECIFIED IN SUPP. SPEC. I-128, THE REFLECTIVE UNITS IN THE SIGN OUTLINES, ONLY, MAY HAVE 6061-T6 ALUMINUM FRAMES 0.032" THICK.

DEMOUNTABLE LETTERS & SYMBOLS



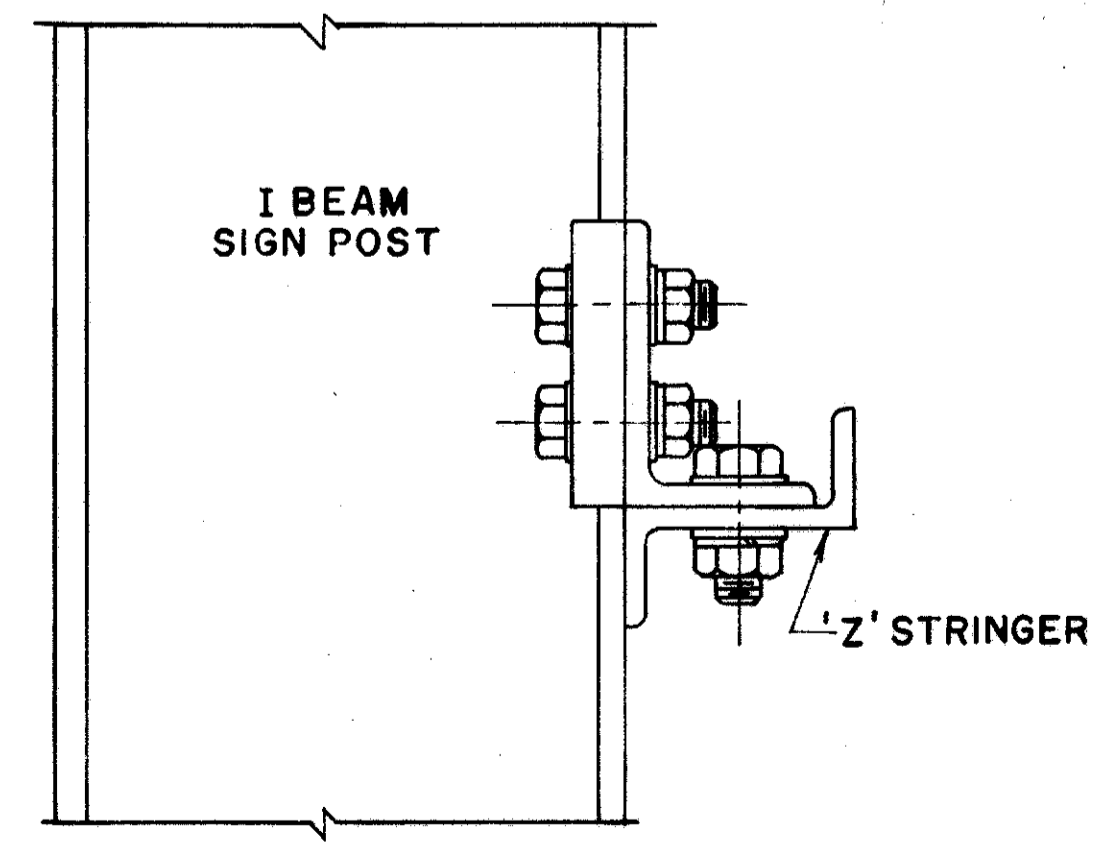
**DETAIL "D"
VERTICAL STRINGER**



**SECTION D-D SECTION F-F
NOT TO SCALE**

FASTENERS SHALL BE PLACED ON THE STROKE CENTER LINES OF EACH LETTER OR SYMBOL AT A MAXIMUM SPACING OF EIGHT INCHES. CARE SHALL BE TAKEN TO INSURE THAT ALL SEGMENTS OF EACH LETTER OR SYMBOL ARE SECURELY AFFIXED TO THE BACKING. LETTERS CONTAINING REFLECTIVE UNITS SHALL BE FASTENED AT POINTS DETERMINED BY THE MANUFACTURER.

DEMOUNTABLE MARKERS OR SHIELDS SHALL BE SECURELY AFFIXED TO THE BACKING UTILIZING THE BOLT HOLES AS LOCATED ON THE DESIGN DRAWING OR USING FASTENERS AS INDICATED ABOVE. WHEN BOLTS ARE USED, THE .064" CLEARANCE BETWEEN THE MARKER AND BACKING WILL BE MAINTAINED.



**DETAIL "A"
POST CLAMP DETAIL**