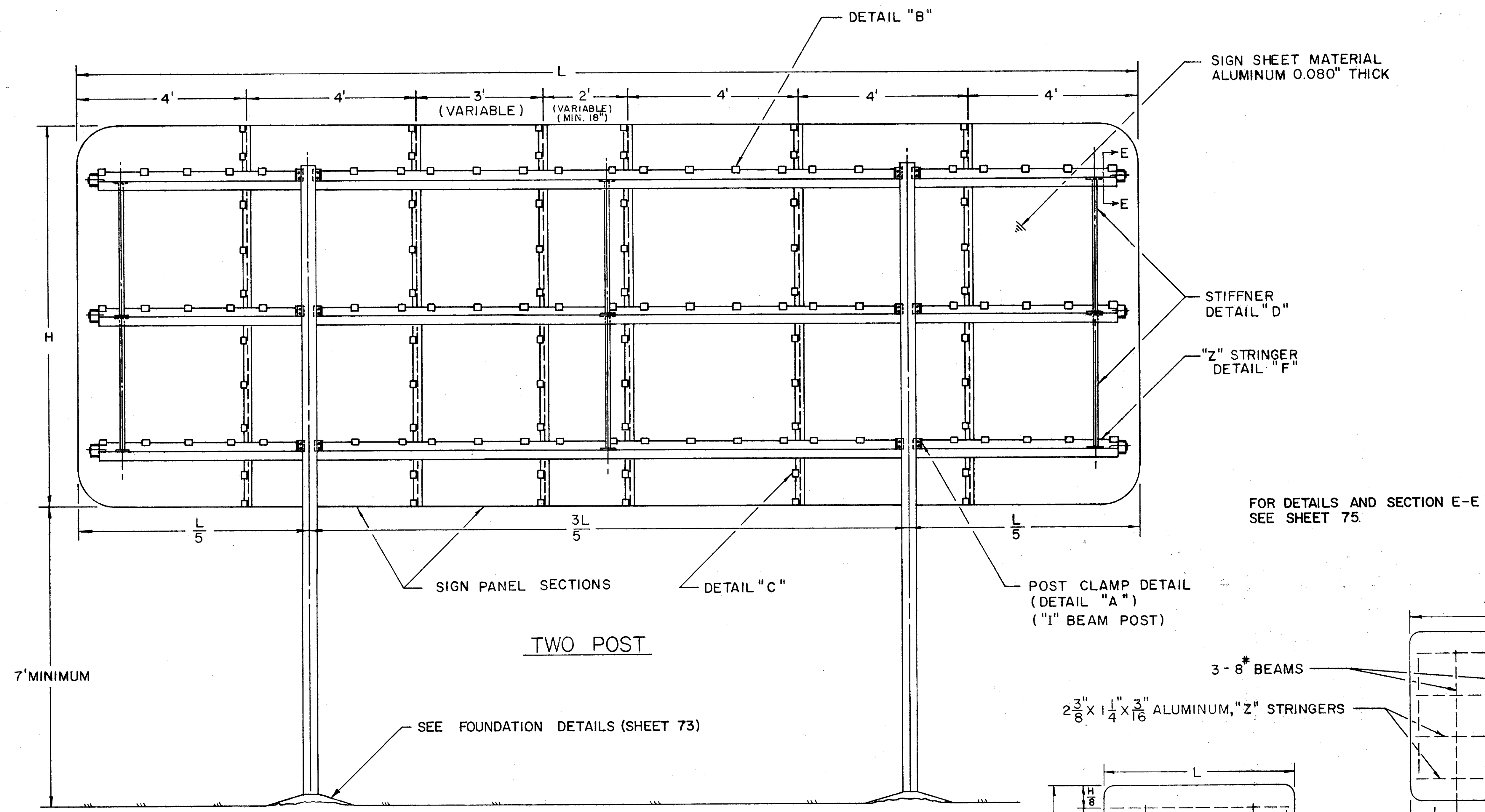


**NOTES**

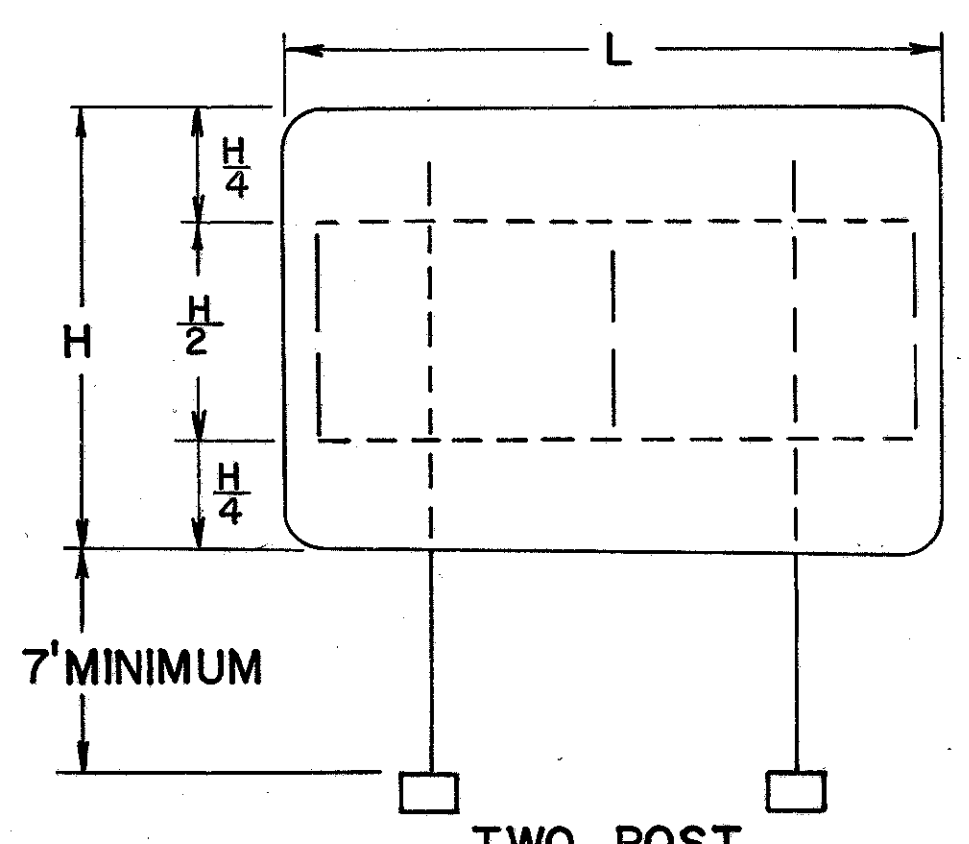
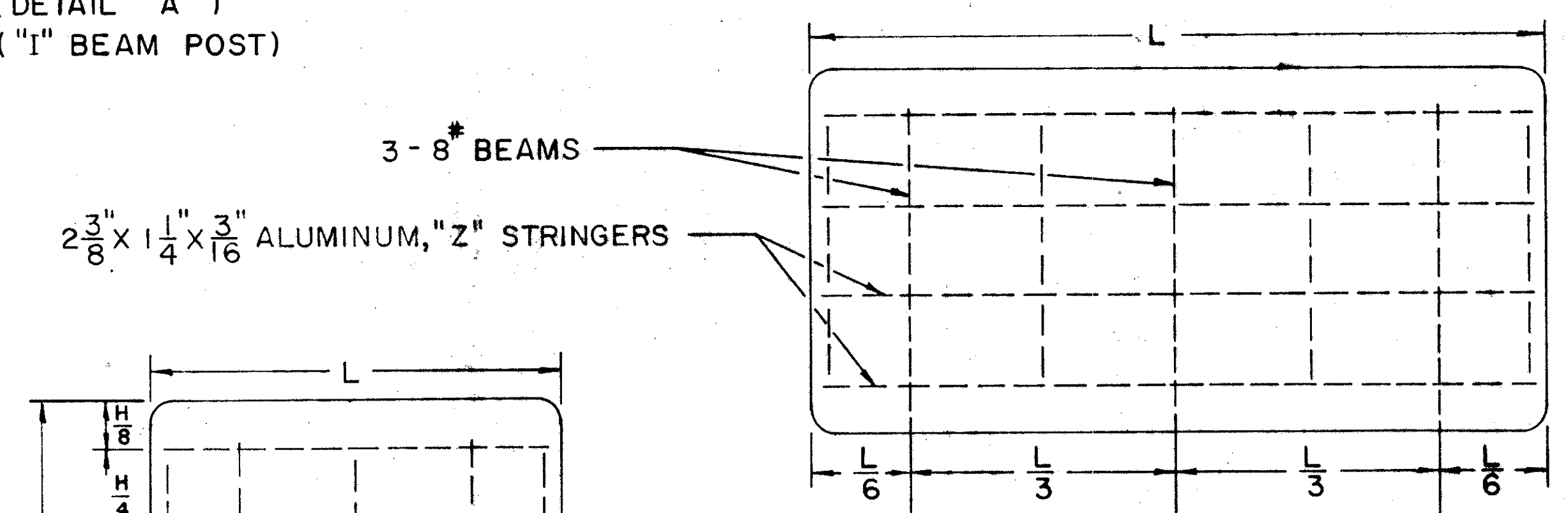
**GENERAL:**  
SECTIONAL SHEET SIGNS MAY BE ERECTED ON EITHER GALVANIZED STRUCTURAL STEEL SHAPES OR ON TAPERED ALUMINUM POLES AS SPECIFIED IN THE PLANS.

**FABRICATION:**  
THE VERTICAL SIGN PANEL SECTIONS SHALL BE FOUR FEET WIDE, EXCEPT THAT NO MORE THAN TWO SECTIONS FOR ANY SIGN SHALL BE CUT TO LESS THAN FOUR FEET TO OBTAIN THE REQUIRED SIGN LENGTH.

**ERECTION:**  
NO FIELD WELDING SHALL BE PERMITTED. BOLT HOLES MAY BE DRILLED IN THE FIELD, WHERE NECESSARY.



FOR DETAILS AND SECTION E-E SEE SHEET 75.

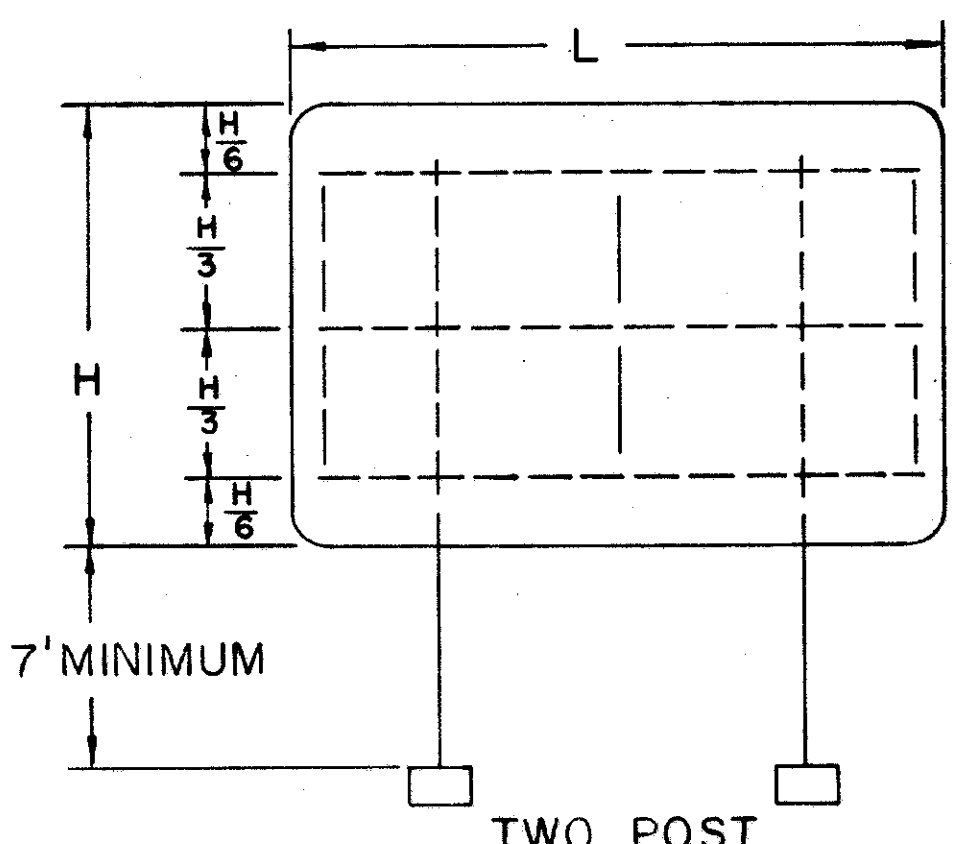


**TWO POST**  
2 STRINGERS (REQUIRED FOR VALUES OF "H" FROM 3' TO 5'-6")

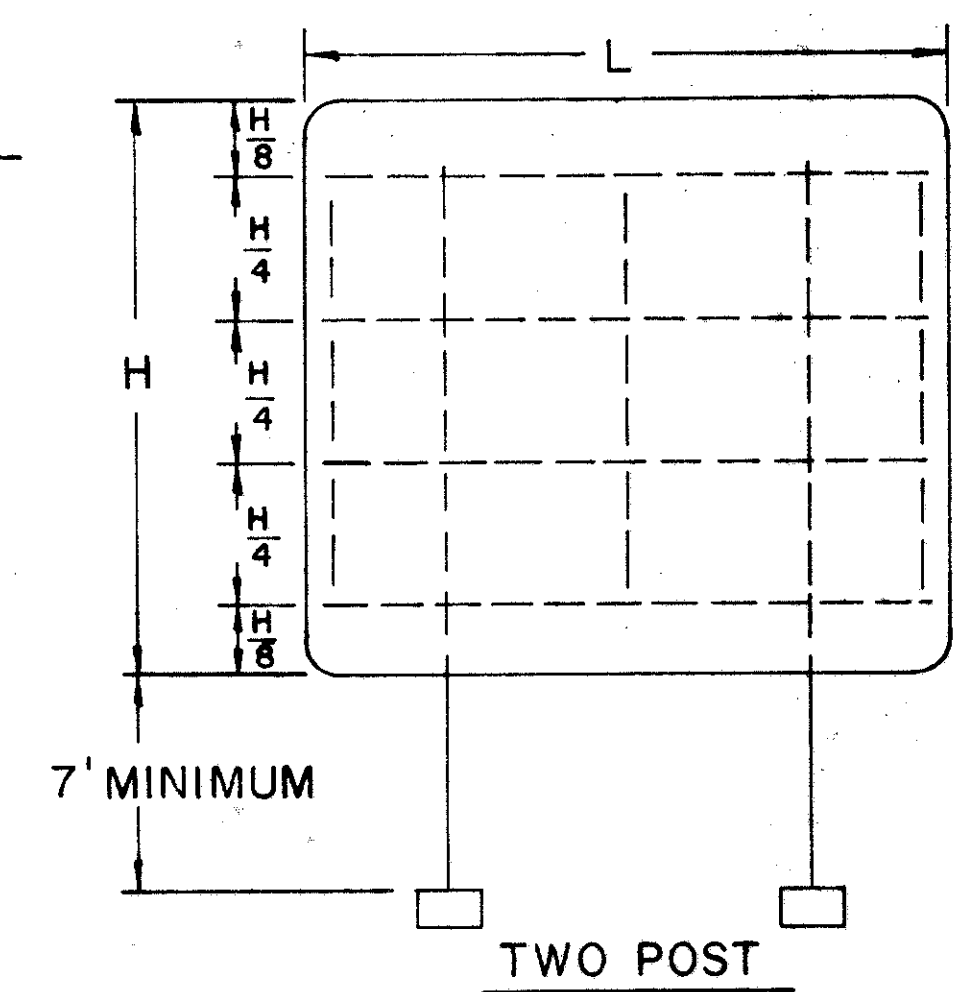
MAX SIGN LENGTH	* STRINGER SIZE												
	2 STRINGERS SIGN HEIGHT		3 STRINGERS SIGN HEIGHT			4 STRINGERS SIGN HEIGHT							
22'	3'	4'	5'	6'	7'	8'	9'	10'	11'	12'			
23'	TYPE "A"		TYPE "B"			TYPE "B"							
24'	TYPE "B"		TYPE "B"			TYPE "B"							
25'	TYPE "C"		TYPE "C"			TYPE "C"							

\*USE TYPE A STRINGERS WHEN 3 VERTICAL SUPPORTS ARE USED

**TWO POST**



**TWO POST**  
3 STRINGERS (REQUIRED FOR VALUES OF "H" FROM 6' TO 8'-6")



**TWO POST**  
4 STRINGERS (REQUIRED FOR VALUES OF "H" FROM 9' TO 12')



**THREE POST**

**(300 SQ. FT. SIGN AREA)**  
**SECTIONAL SHEET SIGN**