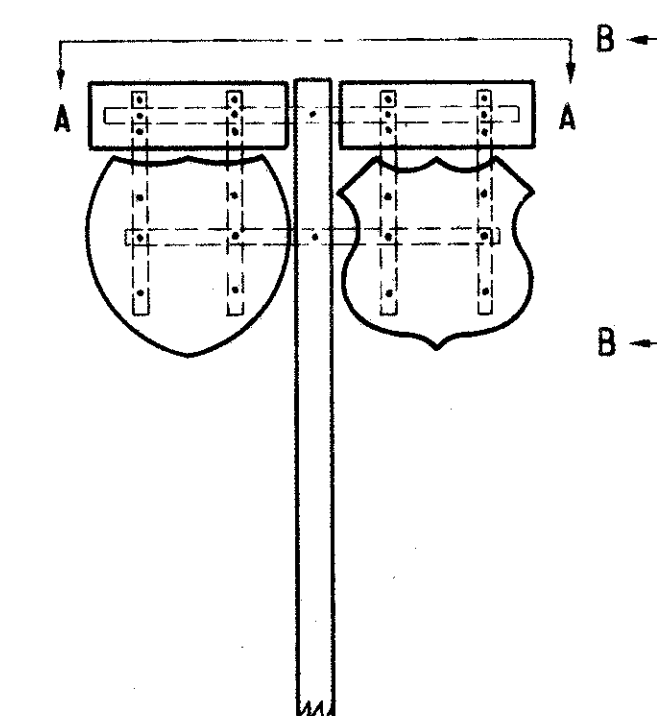
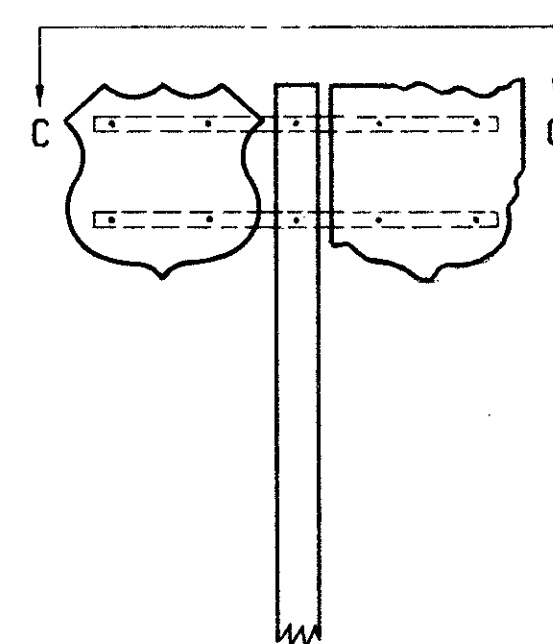


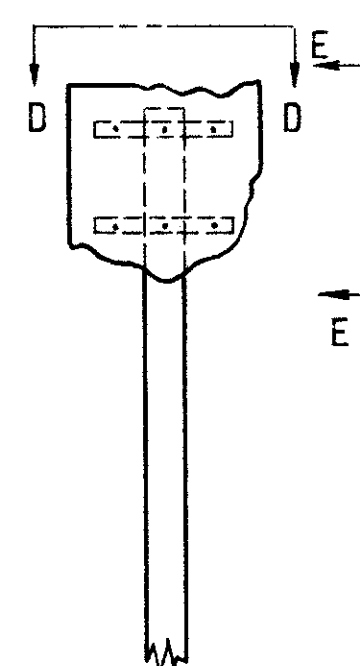
TYPICAL ERECTION OF SHEET SIGNS SUPPORTED ON ONE BEAM



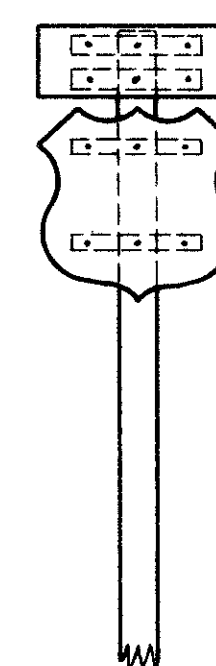
TWO MARKER ASSEMBLIES



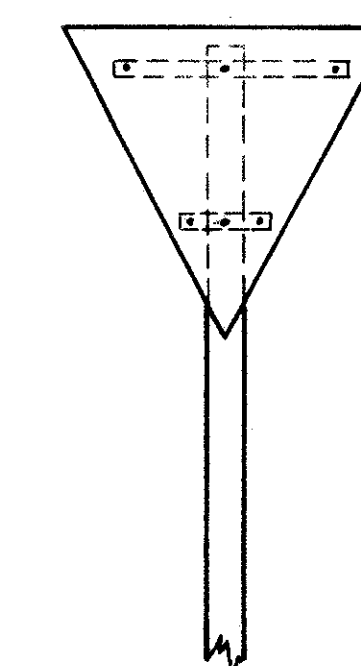
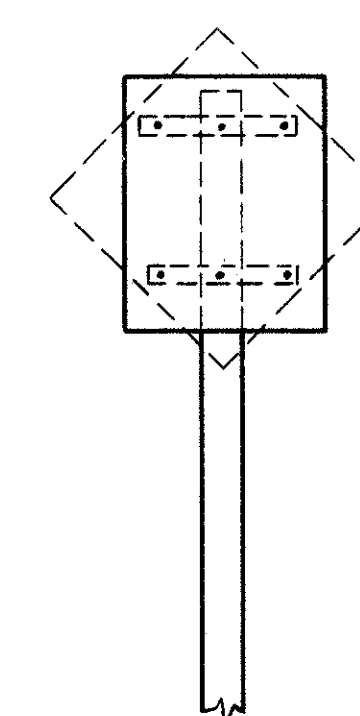
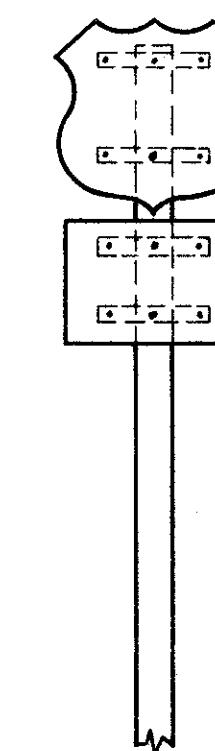
TWO MARKERS



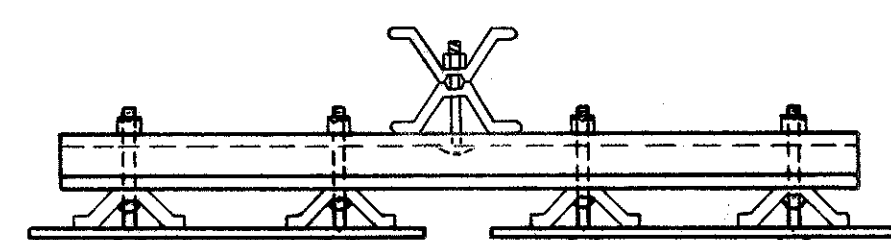
ONE MARKER



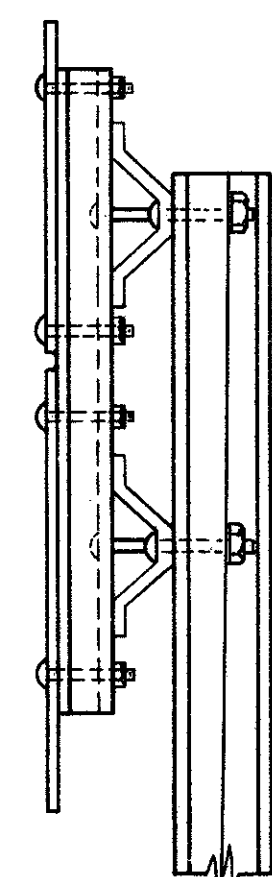
SINGLE MARKER ASSEMBLIES



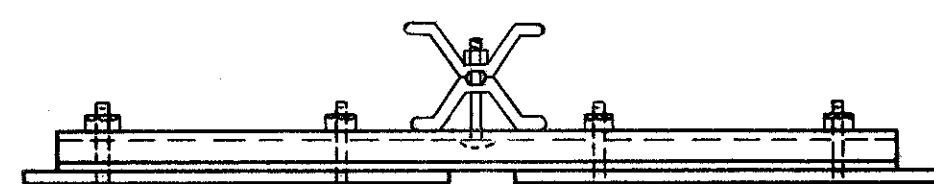
ALL REGULATORY & WARNING SIGNS



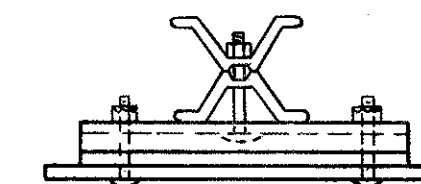
SECTION A-A



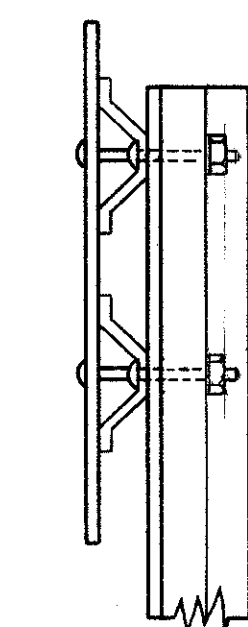
SECTION B-B



SECTION C-C



SECTION D-D

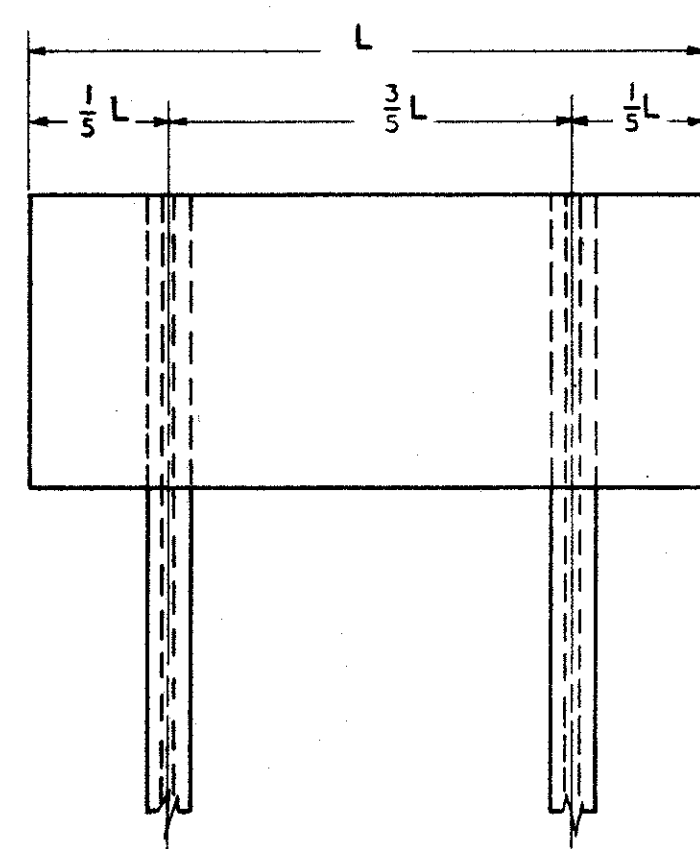


SECTION E-E

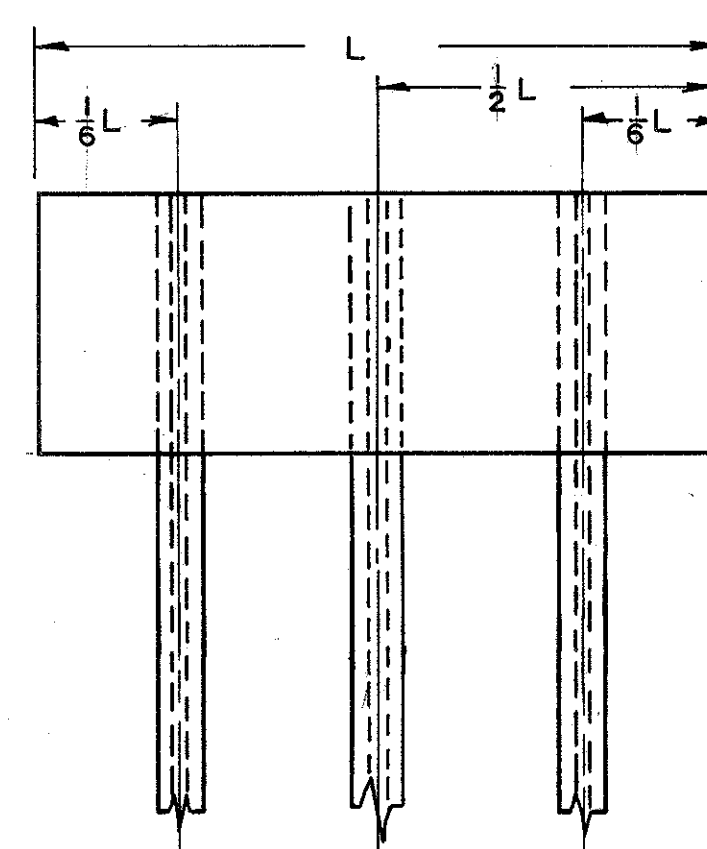
NOTES:

1. ALL ROUTE MARKERS ARE 48" X 48" OR 36" X 36".
2. ALL SUPPORTS SHALL BE BEAM, AND BACK BRACING SHALL BE STEEL DRIVE POST. FOR DRIVE POST DETAILS SEE SUPPLEMENTAL SPECIFICATION M107.18.
3. SIZES OF BEAMS AND DRIVE POSTS ARE INDICATED IN THE ALIGNMENT SHEET QUANTITIES.
4. TOP OF VERTICAL SUPPORTS AND BRACING SHALL NEVER BE ABOVE TOP EDGE OF UPPERMOST SIGN PLATE.
5. HORIZONTAL BACK BRACING WILL ALWAYS BE MOUNTED ON THE FRONT FLANGE OF THE BEAM SUPPORT.
6. THE SIGN MOUNTING SHALL BE HORIZONTALLY CENTERED ON THE SINGLE VERTICAL BEAM.
7. VERTICAL AND HORIZONTAL CLEARANCE BETWEEN SIGNS IN ONE SIGN ASSEMBLY SHALL BE A MAXIMUM OF 2" EXCEPT FOR SECTIONAL SHEET SIGNS.
8. NUTS AND BOLTS SHALL BE ALUMINUM. ALUMINUM WASHERS SHALL BE USED ON THE SIGN FACE ONLY. ALL HARDWARE SHALL CONFORM TO THE SPECIFICATIONS.
9. BOLT HOLE INFORMATION FOR SIGNS IS INDICATED ON SIGN DESIGN SHEETS.

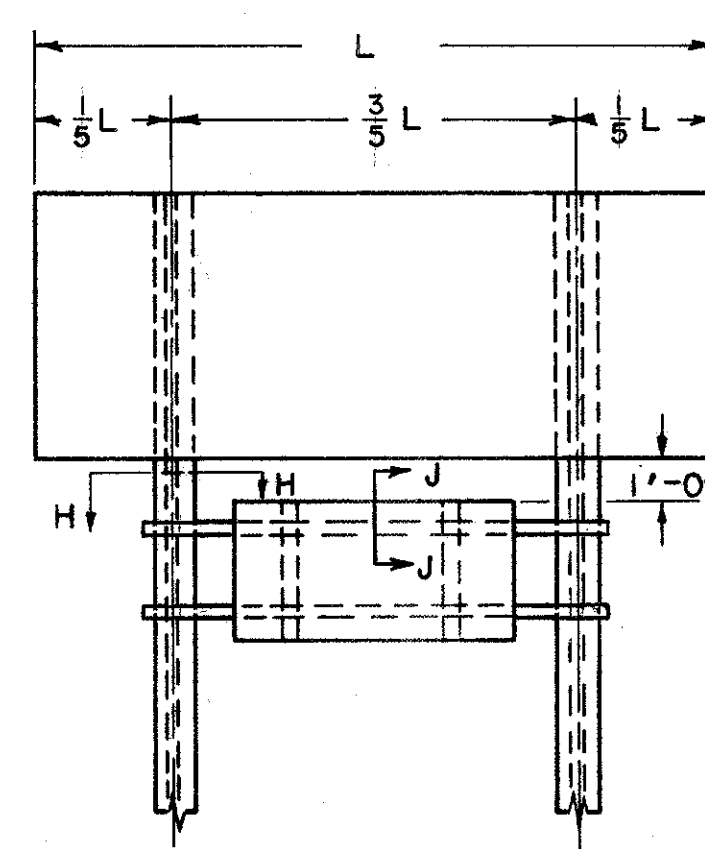
TYPICAL ERECTION OF ALUMINUM SECTIONAL SHEET SIGNS SUPPORTED ON TWO AND THREE BEAMS



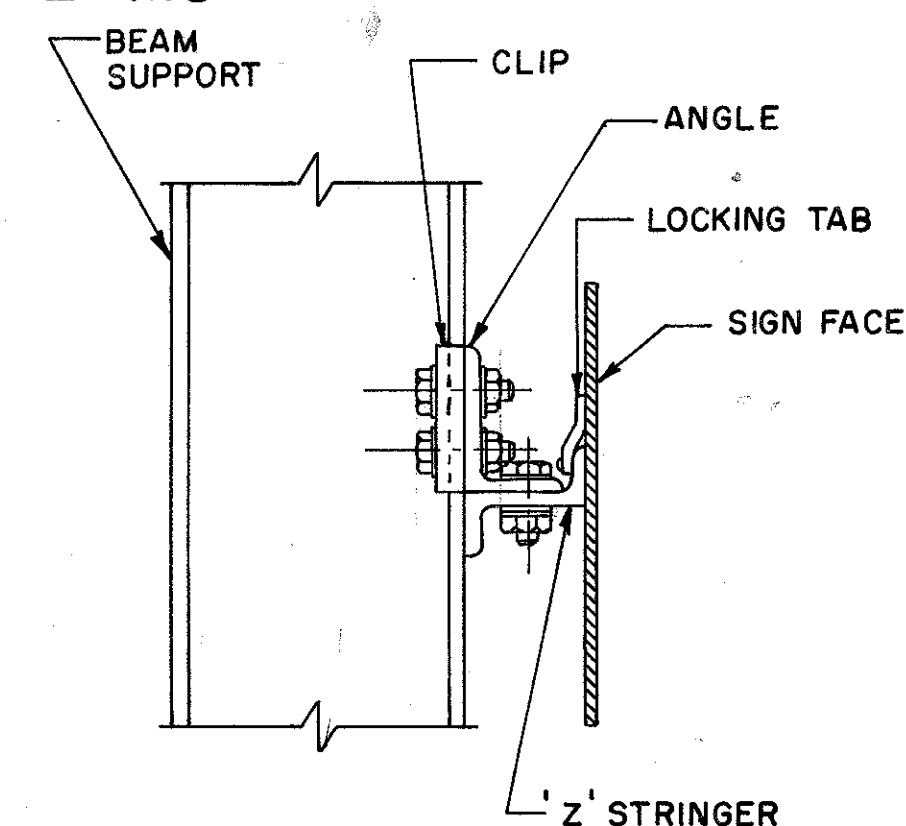
TWO BEAM SUPPORTS



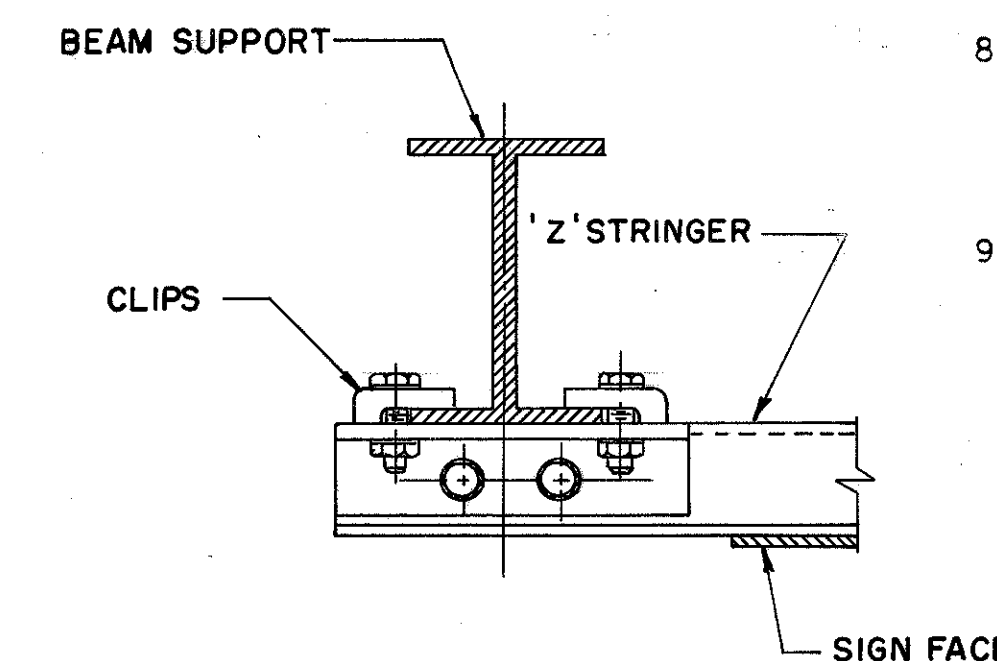
THREE BEAM SUPPORTS



WHEN SECONDARY SIGN SPANS SUPPORTS  
ERECTION IS SIMILAR TO MAJOR SIGN



SECTION J-J



SECTION H-H

FOR ERECTION DETAILS SEE SHEET 74 & 75