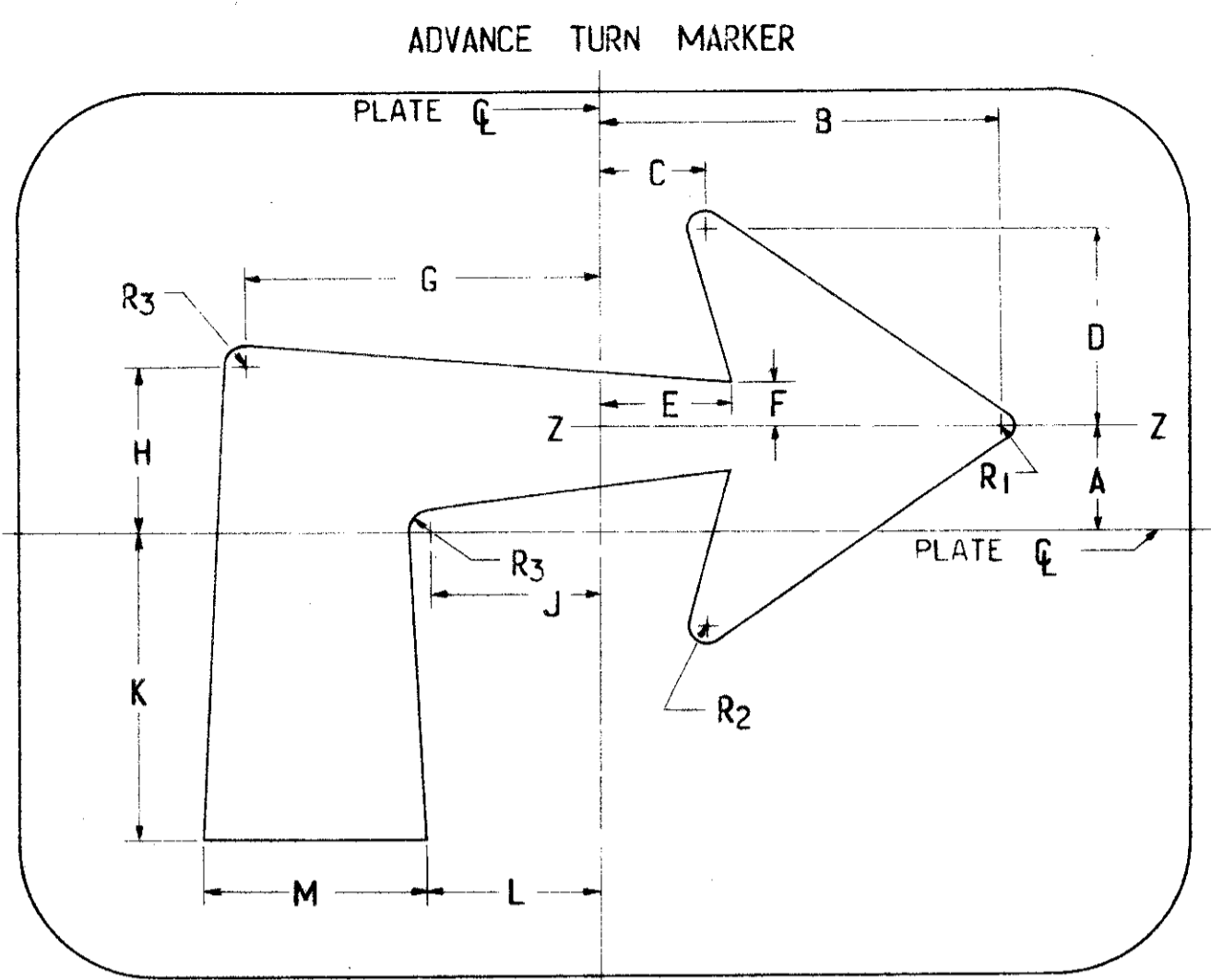
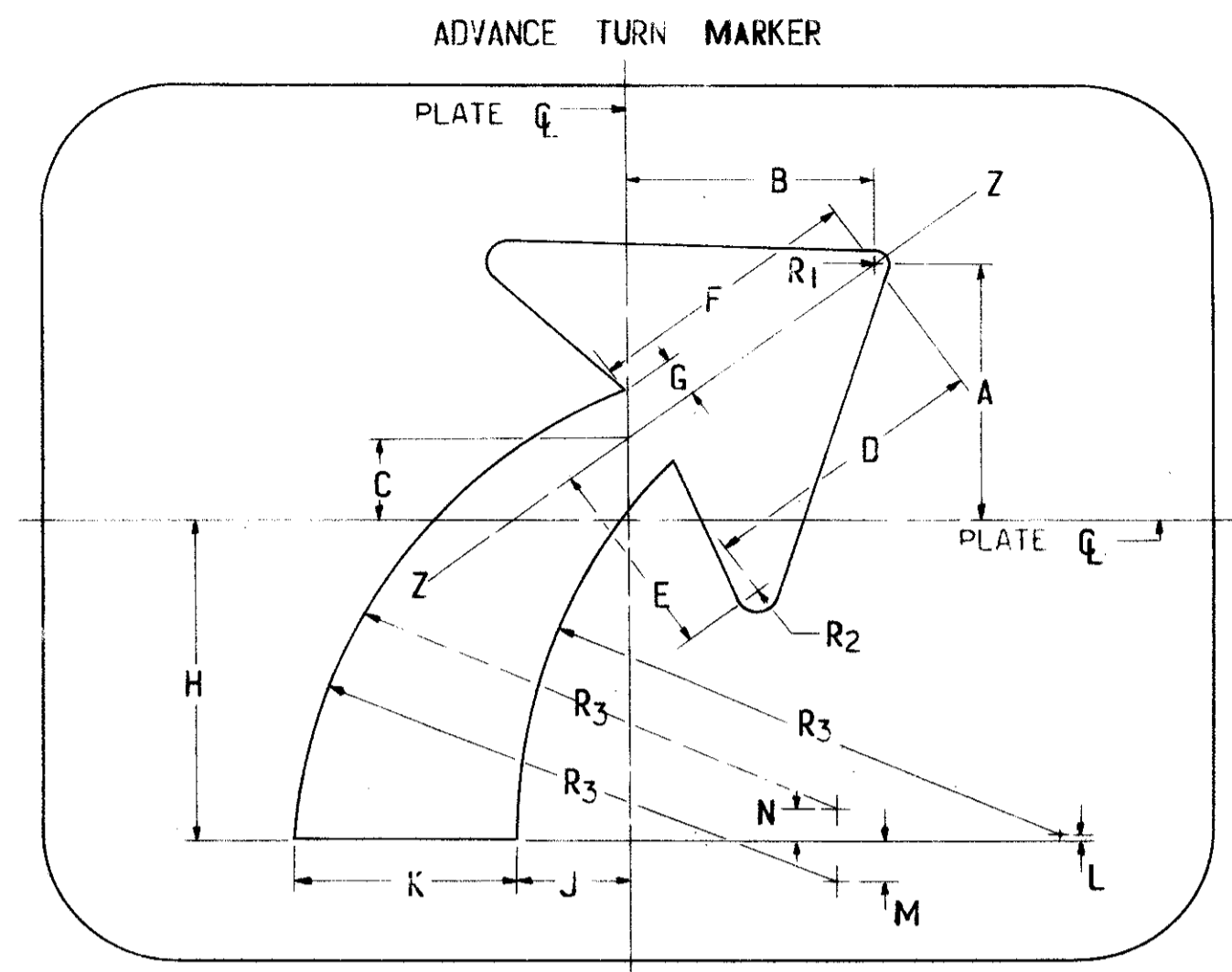


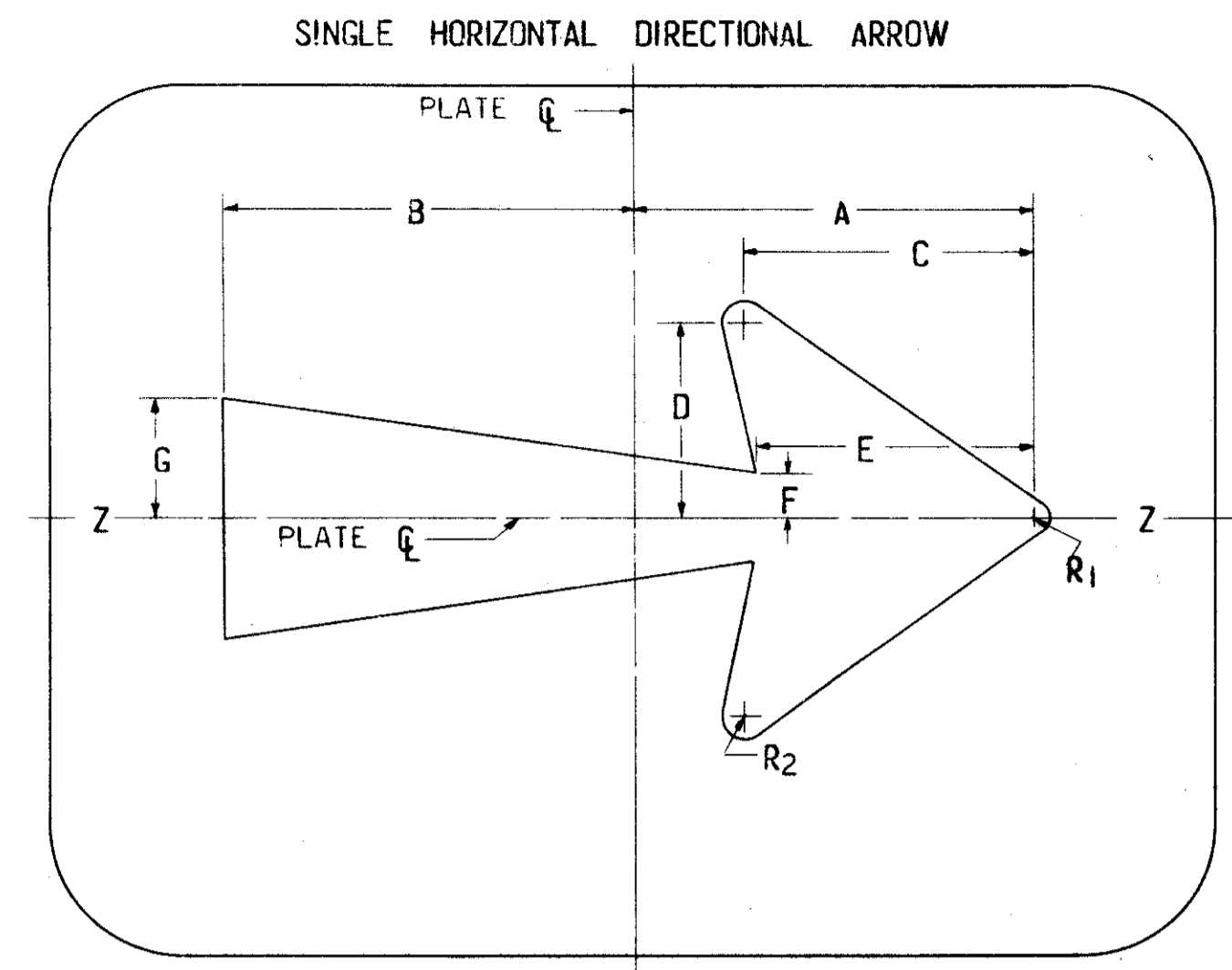
LAKE COUNTY  
ASHTABULA COUNTY  
LAK.-1-12.89  
ATB.-1-0.00



M-19 RIGHT 90°  
\*M-21 LEFT 90°



M-20 RIGHT 115°  
\*M-22 LEFT 115°

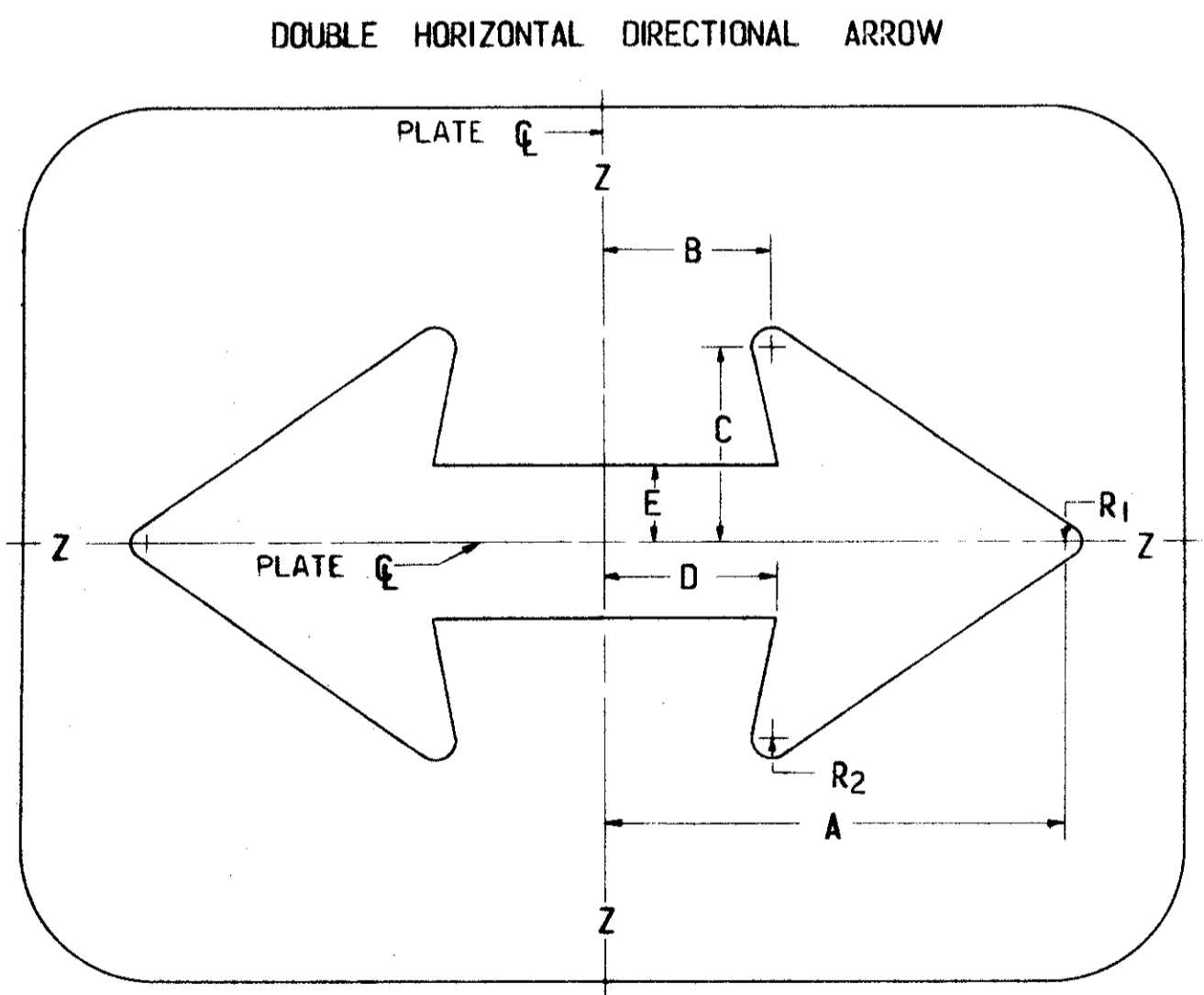


M-24 RIGHT OR LEFT

CODE NUMBER	ARROW DIMENSIONS														
	A	B	C	D	E	F	G	H	J	K	L	M	R <sub>1</sub>	R <sub>2</sub>	R <sub>3</sub>
M-19-13	1 3/16	4 7/16	1 5/32	2 1/4	1 5/16	1/2	3 15/16	1 7/8	1 29/32	3 7/16	1 15/16	2 1/2	5 3/32	7 3/32	1/4
M-21-13	1 3/4	6 23/32	1 3/4	3 15/32	2 3/32	3/4	5 7/8	2 13/16	2 27/32	5 1/8	2 29/32	3 3/4	1/4	2 1/64	3/8
M-19-20	2 7/32	10 49/64	2 3/4	5 17/32	3 3/8	1 1/4	9 13/32	4 31/64	4 9/16	8 1/4	4 5/8	6	3/8	17 17/32	19 1/32
M-21-20	2 7/32	10 49/64	2 3/4	5 17/32	3 3/8	1 1/4	9 13/32	4 31/64	4 9/16	8 1/4	4 5/8	6	3/8	17 17/32	19 1/32

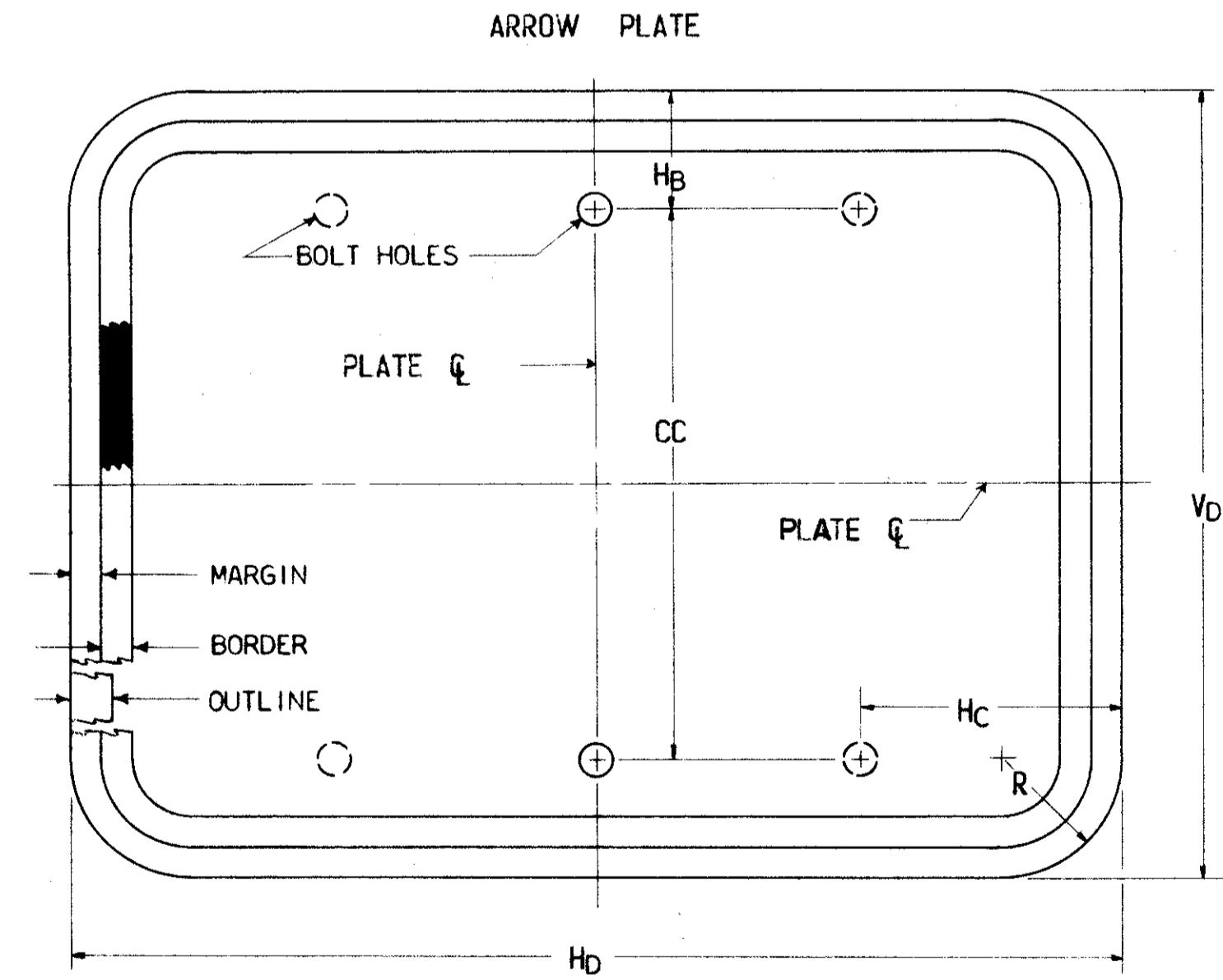
CODE NUMBER	ARROW DIMENSIONS															
	A	B	C	D	E	F	G	H	J	K	L	M	N	R <sub>1</sub>	R <sub>2</sub>	R <sub>3</sub>
M-20-13	2 15/16	2 3/4	1 5/16	3 1/4	2 1/4	3 3/8	1 1/2	3 5/8	1 1/4	2 1/2	1 1/16	7 1/16	—	5 3/32	1/4	6 1/32
M-22-13	2 15/16	2 3/4	1 5/16	3 1/4	2 1/4	3 3/8	1 1/2	3 5/8	1 1/4	2 1/2	1 1/16	7 1/16	—	5 3/32	1/4	6 1/32
M-20-20	4 13/16	4 5/32	1 25/32	5	3 7/16	4 5/8	3 1/4	5 7/16	1 7/8	3 3/4	1 1/2	3 1/16	—	1/4	11 11/32	9
M-22-20	4 13/16	4 5/32	1 25/32	5	3 7/16	4 5/8	3 1/4	5 7/16	1 7/8	3 3/4	1 1/2	3 1/16	—	1/4	11 11/32	9
M-20-30	8 3/16	6 21/32	3 7/16	8	5 9/16	7 3/8	1 3/32	8 3/4	3 3/32	6	1 5/16	—	3/8	3/8	17 17/32	14 3/8
M-22-30	8 3/16	6 21/32	3 7/16	8	5 9/16	7 3/8	1 3/32	8 3/4	3 3/32	6	1 5/16	—	3/8	3/8	17 17/32	14 3/8

CODE NUMBER	ARROW DIMENSIONS								
	A	B	C	D	E	F	R <sub>1</sub>	R <sub>2</sub>	
M-24-13	4 15/32	4 9/16	3 1/4	2 1/4	3 5/32	1/2	1 3/8	5 3/32	1/4
M-24-20	6 13/16	6 7/8	4 3/32	3 15/32	4 9/16	3/4	2 1/16	1/4	2 1/64
M-24-30	11 1/16	11	8 1/16	5 17/32	7 7/16	1 7/32	3 19/64	3/8	17 1/32



M-25

CODE NUMBER	ARROW DIMENSIONS						
	A	B	C	D	E	R <sub>1</sub>	R <sub>2</sub>
M-25-13	5 1/8	1 7/8	2 1/4	1 15/16	3/4	3 1/16	1/4
M-25-20	7 7/8	2 7/8	3 7/16	3 1/4	1 1/8	1/4	11 11/32
M-25-30	11 11/16	3 5/8	5 17/32	4 1/4	1 13/16	3/8	19 1/32



CODE NUMBER	ROUTE MARKER SIZE	ARROW PLATE DIMENSIONS				BOLT HOLES				
		MARGIN	BORDER	H <sub>D</sub>	V <sub>D</sub>	R	DIA.	H <sub>B</sub>	CC	H <sub>C</sub>
M-(**)-13	16"	3/8	3/8	13	10	1 1/2	3/8	1 1/2	7	—
M-(**)-20	24"	3/8	3/8	20	15	1 1/2	3/8	1 1/2	12	—
M-(**)-30	36"	1/2	1/2	30	24	1 1/2	3/8	1 1/2	21	6

\*\* VARIES WITH TYPE ARROW ON PLATE.

NOTES:  
THE ARROW PLATES ARE MOUNTED BELOW THE APPROPRIATE ROUTE MARKER FORMING A MARKING ASSEMBLY.  
THE 13" X 10" AND 20" X 15" PLATES WILL BE FABRICATED WITH TWO BOLT HOLES ON THE VERTICAL CENTER LINE AND THE 30" X 24" PLATE WILL BE FABRICATED WITH FOUR CORNER BOLT HOLES.  
\* ROTATE GIVEN DESIGN 180° ABOUT VERTICAL PLATE CENTER LINE.  
ARROWS ARE SYMMETRICAL ABOUT ARROW AXIS (Z-Z).  
ALL DIMENSIONS ARE IN INCHES.  
ARROW PLATES MOUNTED BELOW INTERSTATE ROUTE MARKERS WILL HAVE A WHITE LEGEND AND OUTLINE ON A BLUE BACKGROUND AND A CODE NUMBER PRECEDED BY THE LETTER I.  
USE FOLLOWING TABLE WHEN "I" PRECEDES ANY OF THE ABOVE CODE NUMBERS.

CODE	ROUTE MARKER SIZE	OUTLINE
IM(**)-13	16"	1/2
IM(**)-20	24"	3/4
IM(**)-30	36"	1