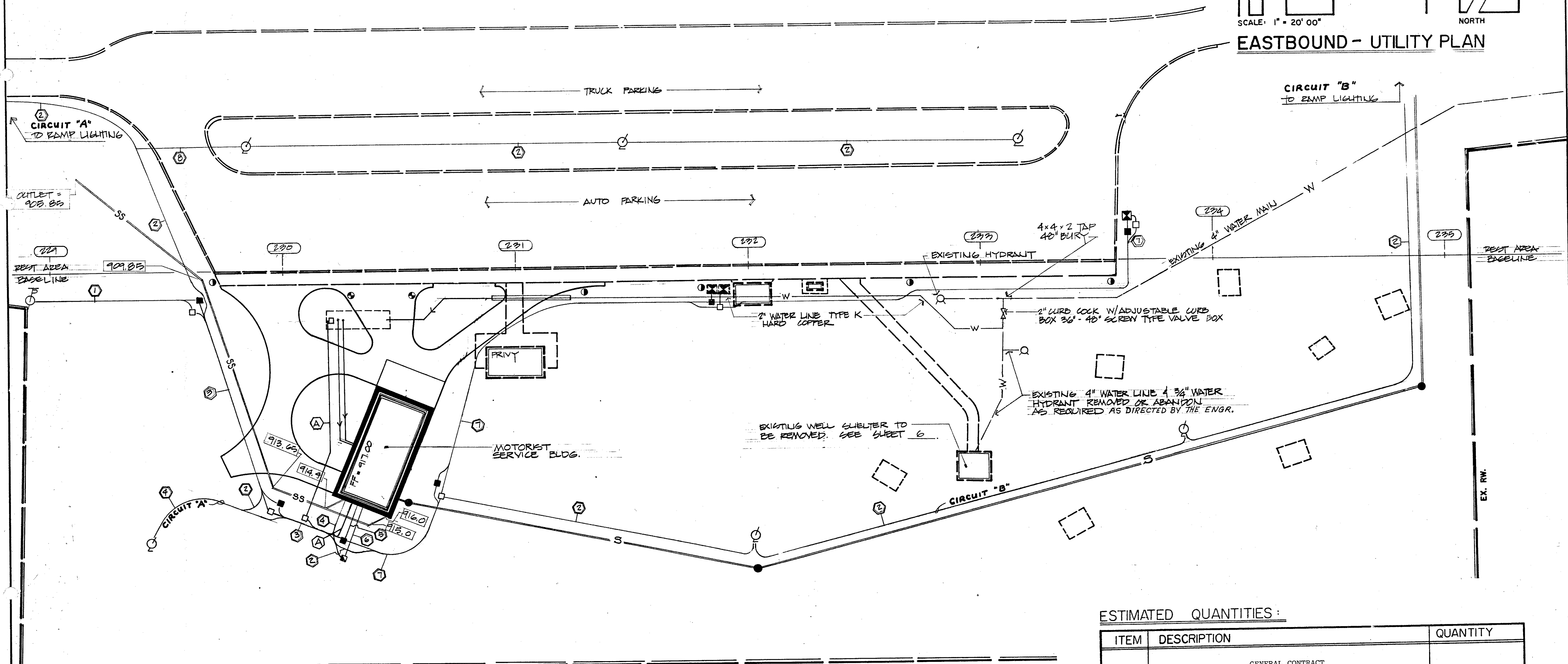


EASTBOUND - UTILITY PLAN



- LEGEND:**
- WASTE RECEPTACLE (SET ON SIDEWALK)
 - SS SANITARY SEWER
 - SS STORM SEWER
 - W EXISTING 4" WATER LINE
 - W NEW 2" WATER LINE
 - W ELECTRIC & TELEPHONE LINES (AS KEYPED)
 - TRANSFORMER PAD
 - MANHOLE
 - ELECTRICAL FULL BOX
 - TELEPHONE FULL BOX
 - X WATER LINE VALVE
 - HYDRANT
 - LIGHT POLE
 - TERMINATION POLE
 - TELEPHONE BOOTH (AS DIRECTED BY ENGR.)
 - WASTE RECEPTACLE W/GARD

- KEY:**
- ① 1-1" CONDUIT - RESERVOIR CONTROLS
 - ① 1-4" CONDUIT - POWER SERVICE
 - ① 1-3" CONDUIT - TELEPHONE SERVICE
 - ② 1-1 1/2" DUCT CABLE - LIGHTING
 - ③ 1-4" CONDUIT - POWER SERVICE
 - ③ 1-3" CONDUIT - TELEPHONE SERVICE
 - ③ 1-1 1/2" DUCT CABLE - AREA LIGHTING
 - ④ 2-1 1/2" DUCT CABLE - LIGHTING
 - ⑤ 1-3" CONDUIT - TELEPHONE SERVICE
 - ⑥ 1-4" CONDUIT - POWER SERVICE
 - ⑦ 1-1 1/2" CONDUIT - TELEPHONE SERVICE
 - ⑦ 1-1 1/2" DUCT CABLE - AREA LIGHTING
 - ⑧ 1-3" CONDUIT

NOTES:

- FOR ELECTRICAL & TELEPHONE SERVICE QUANTITIES SEE SHEETS GASIES.
- AFTER INSTALLATION ALL CONDUITS FOR TELEPHONE & ELECTRICAL SERVICE SHALL BE CLEANED AND HAVE A NO. 10 FULL WIRE LEFT IN PLACE FOR USE BY UTILITY CO.
- CUT EXISTING 4" WATER LINE & INSTALL 2" CURB COCK. FURNISH FITTINGS AS REQUIRED. USE EXISTING WATER PIPE & CUT TO PROVIDE A PIPE JOINT AT OR NEAR SUPPLY SIDE OF NEW CURB COCK. FURNISH ALL W&P PER FITTINGS.
- FOR RAMP LIGHTING SEE SHEET IT.

ESTIMATED QUANTITIES:

ITEM	DESCRIPTION	QUANTITY
GENERAL CONTRACT		
603 SPECIAL SPECIAL	6" CONDUIT, TYPE F (ROOF DRAIN OUTLET) WASTE RECEPTACLE SLEEVE WASTE RECEPTACLE SLAB WATER RESERVOIR ASSEMBLY (EXCEPT ELECT. & PLUMBING)	330 L.F. 7 EACH 5 EACH 1 EACH
ELECTRICAL CONTRACT		
SPECIAL SPECIAL	MOTORIST SERVICE BLDG. & STORAGE UNIT (ELECTRICAL WORK ONLY) WATER RESERVOIR ASSEMBLY (ELECTRICAL ONLY)	1 EACH 1 EACH
HEATING & VENTILATING CONTRACT		
SPECIAL	MOTORIST SERVICE BLDG. & STORAGE UNIT (HEATING & VENTILATING WORK ONLY)	1 EACH
PLUMBING CONTRACT		
SPECIAL SPECIAL	MOTORIST SERVICE BLDG. & STORAGE UNIT (PLUMBING WORK ONLY) COLD WATER SERVICE FOR MOTORIST SERVICE BLDG. & STORAGE UNIT	1 EACH 1 EACH