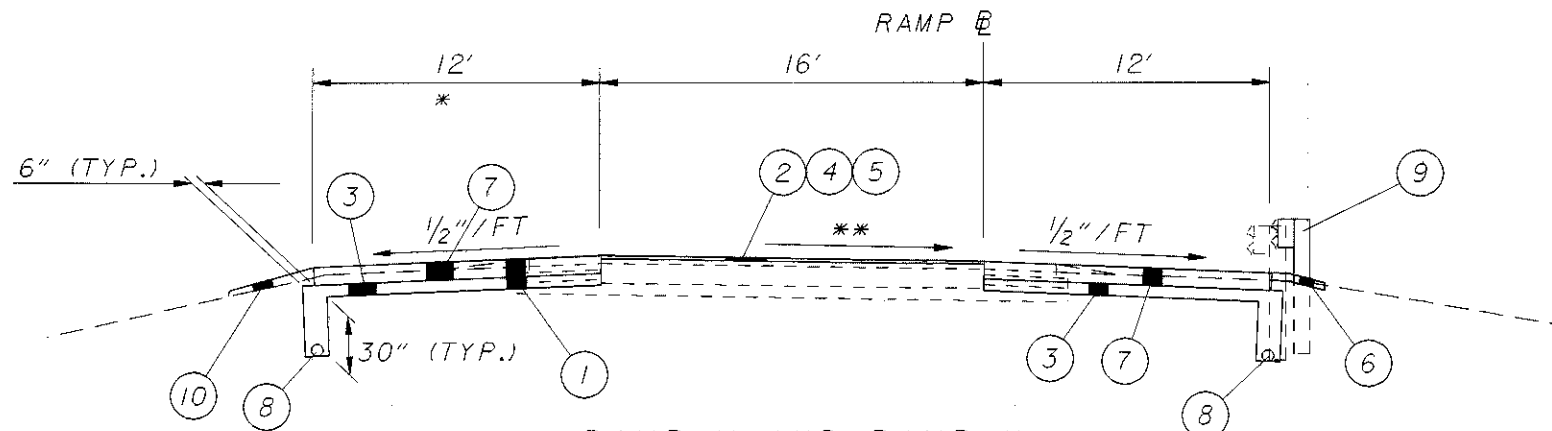


EXISTING PAVEMENT TYPICAL
 BOTH REST AREAS

EXISTING LEGEND

- (A) 6" SUBBASE
- (B) 5" CRUSHED AGGREGATE
- (C) 10" REINFORCED CONCRETE
- (D) 3¾" ASPHALT OVERLAY
- (E) ±6½" (MAX. THICKNESS) ASPHALT
- (F) 6" PIPE UNDERDRAIN
- (G) GUARDRAIL

** - MATCH EXISTING PAVEMENT CROSS SLOPE.
 * - SEE RAMP N SHOULDER DETAIL THIS SHEET.

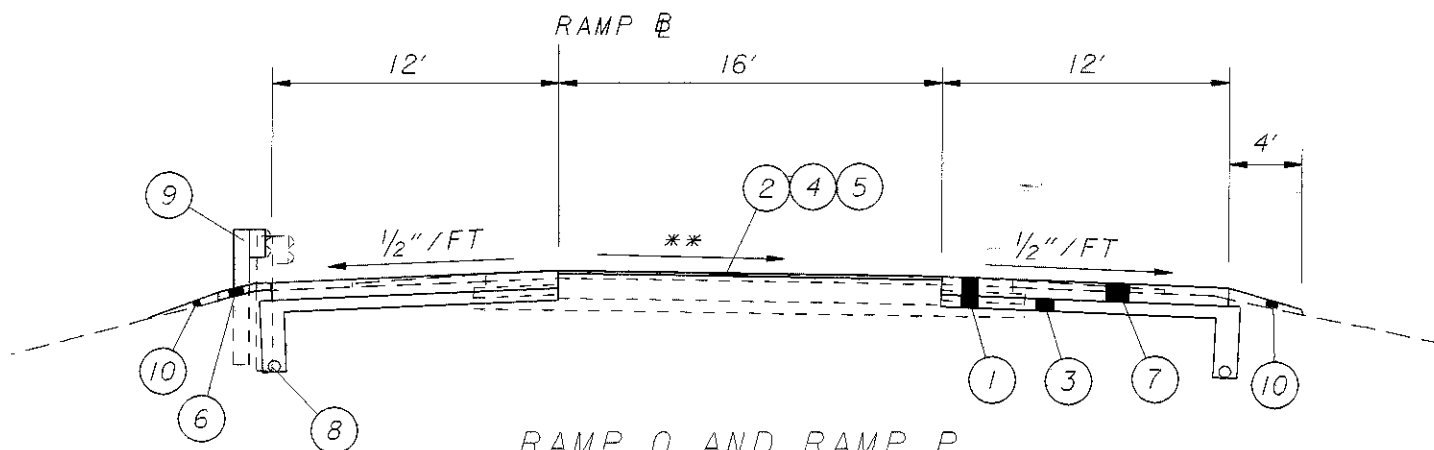


RAMP M AND RAMP N
 EASTBOUND REST AREA

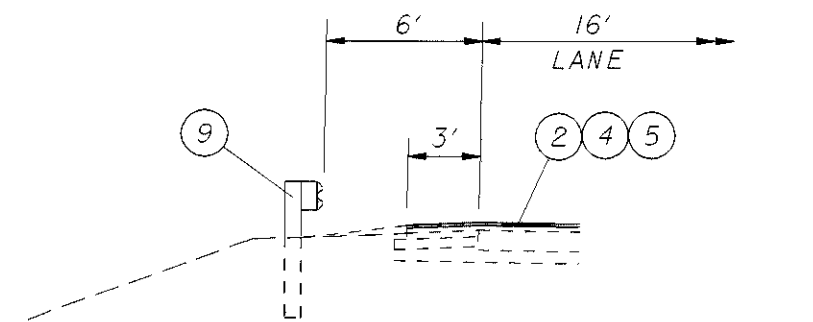
PROPOSED LEGEND

- (1) 203-EXCAVATION
- (2) 254-PAVEMENT PLANING, BITUMINOUS (1½")
- (3) 304-AGGREGATE BASE, 6"
- (4) 407-TACK COAT (0.10 GAL/SY)
- (5) 448-1½" ASPHALT CONCRETE SURFACE COURSE, TYPE 1, PG64-28
- (6) 448-3" ASPHALT CONCRETE INTERMEDIATE COURSE, TYPE 1, PG64-22 (UNDER GUARDRAIL)
- (7) 451-9" REINFORCED CONCRETE PAVEMENT
- (8) 605-6" SHALLOW PIPE UNDERDRAIN
- (9) 606-GUARDRAIL, TYPE 5
- (10) 617-COMPACTED AGGREGATE, TYPE A

SEE PLAN SHEETS FOR LIMITS OF SHOULDER WORK.



RAMP O AND RAMP P
 WESTBOUND REST AREA



RAMP N LEFT SHOULDER DETAIL
 EASTBOUND REST AREA