

Lake County  
T. 10 N.

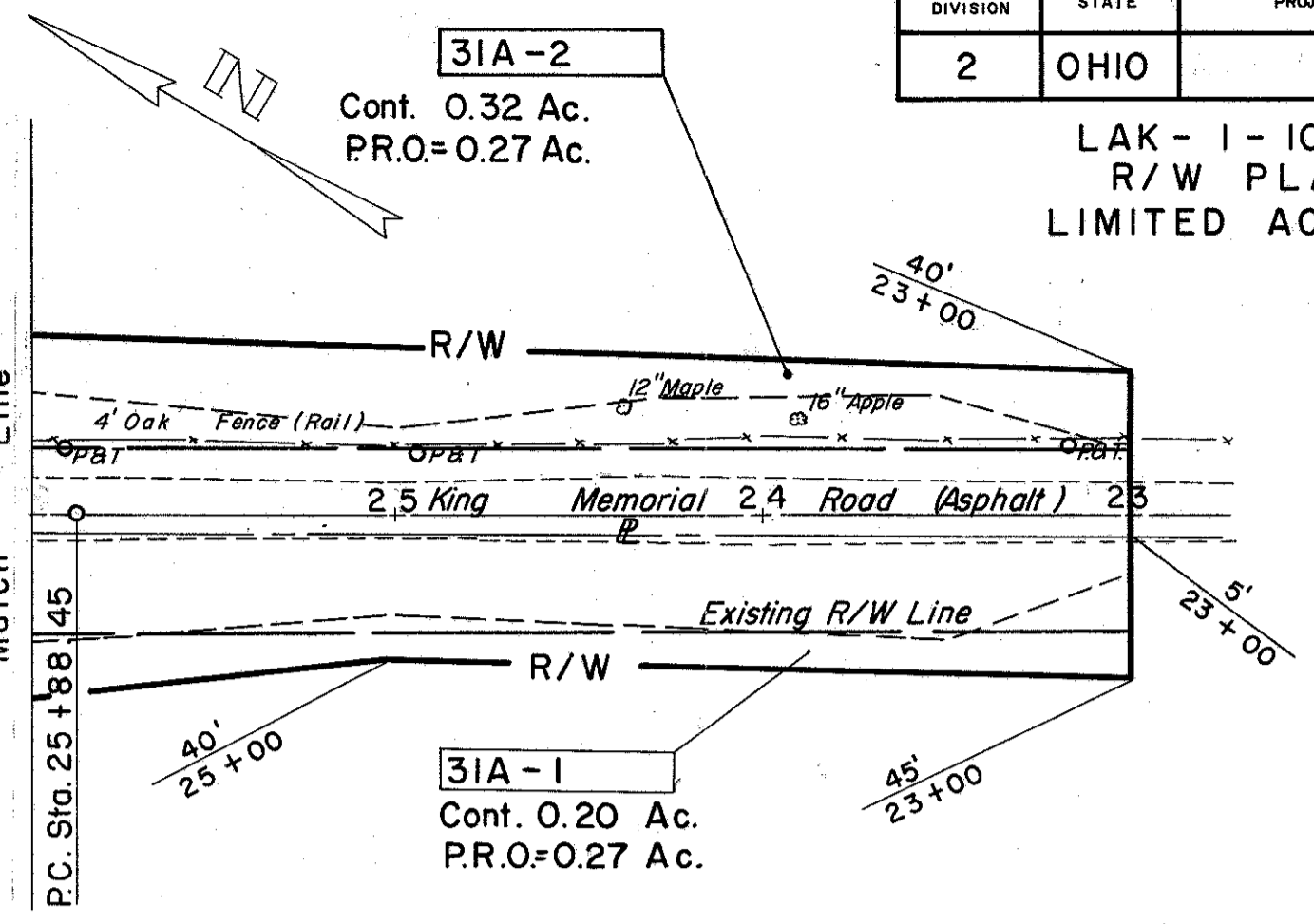
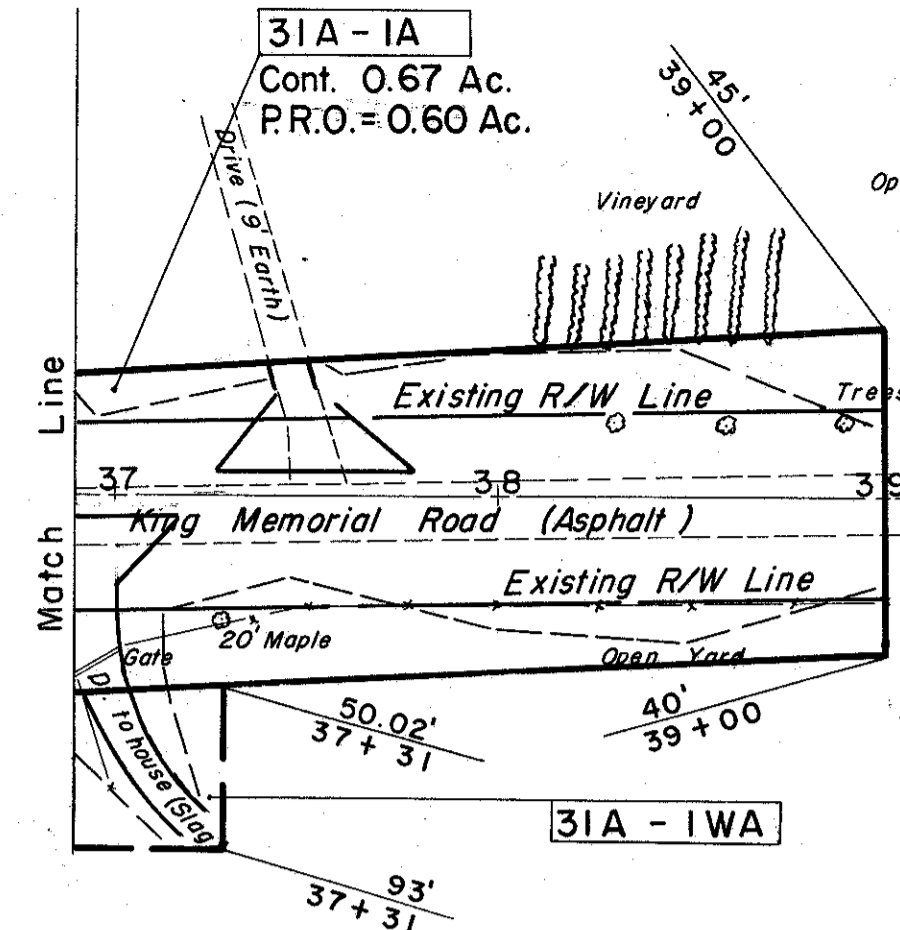
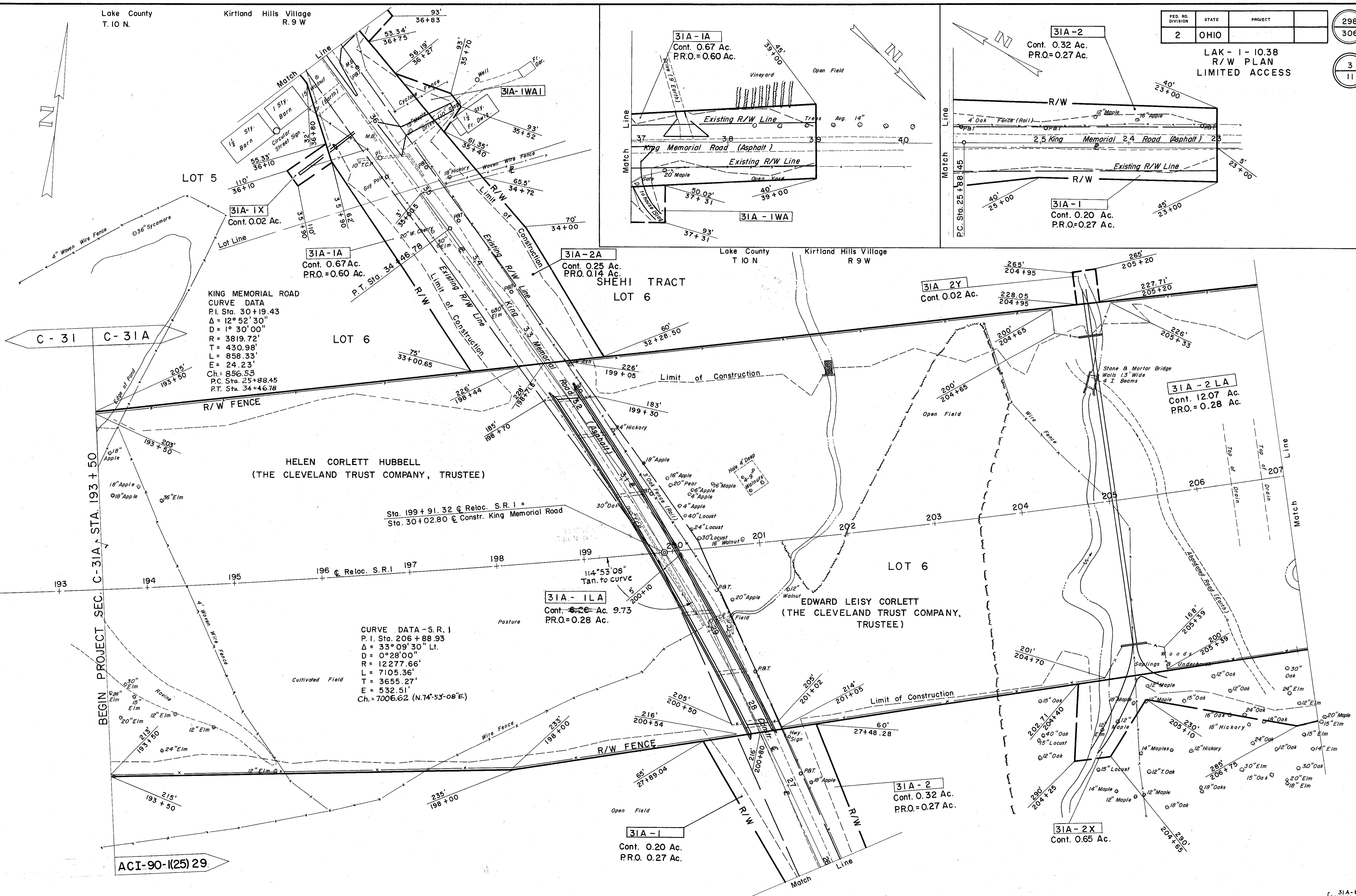
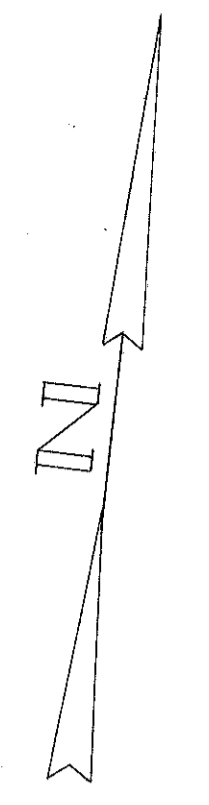
Kirtland Hills Village  
R. 9 W

FED. RD. DIVISION	STATE	PROJECT
2	OHIO	LAK - I - 10.38

298  
306

R/W PLAN  
LIMITED ACCESS

3  
11



ACI-90-1(25) 29

2,815 L.F. TYPE "D" FENCE

Revised 3-20-1962  
Revised 11-11-1959

R/W PLAN STA. 193 + 50 TO STA. 207 + 00