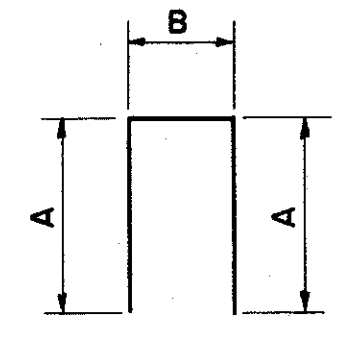
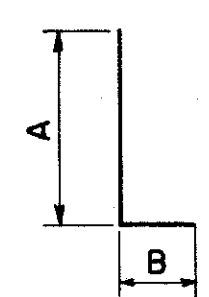


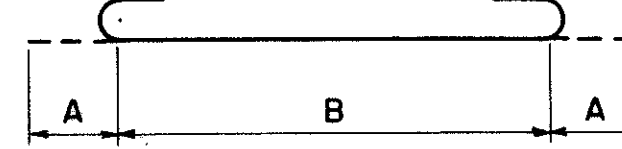
TYPE #4



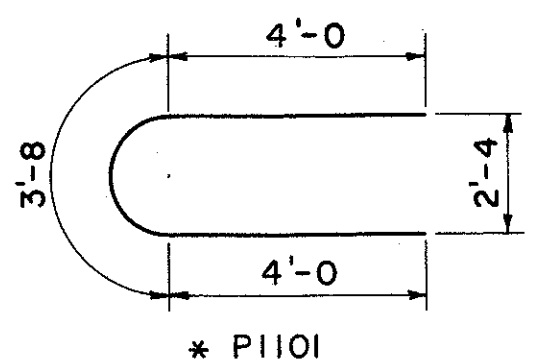
TYPE #1



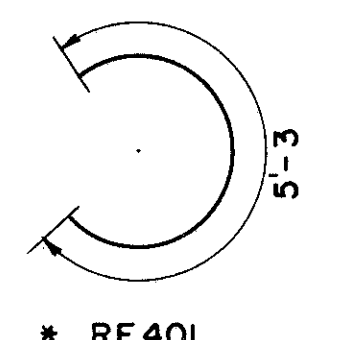
TYPE #2



TYPE #3



* P1101



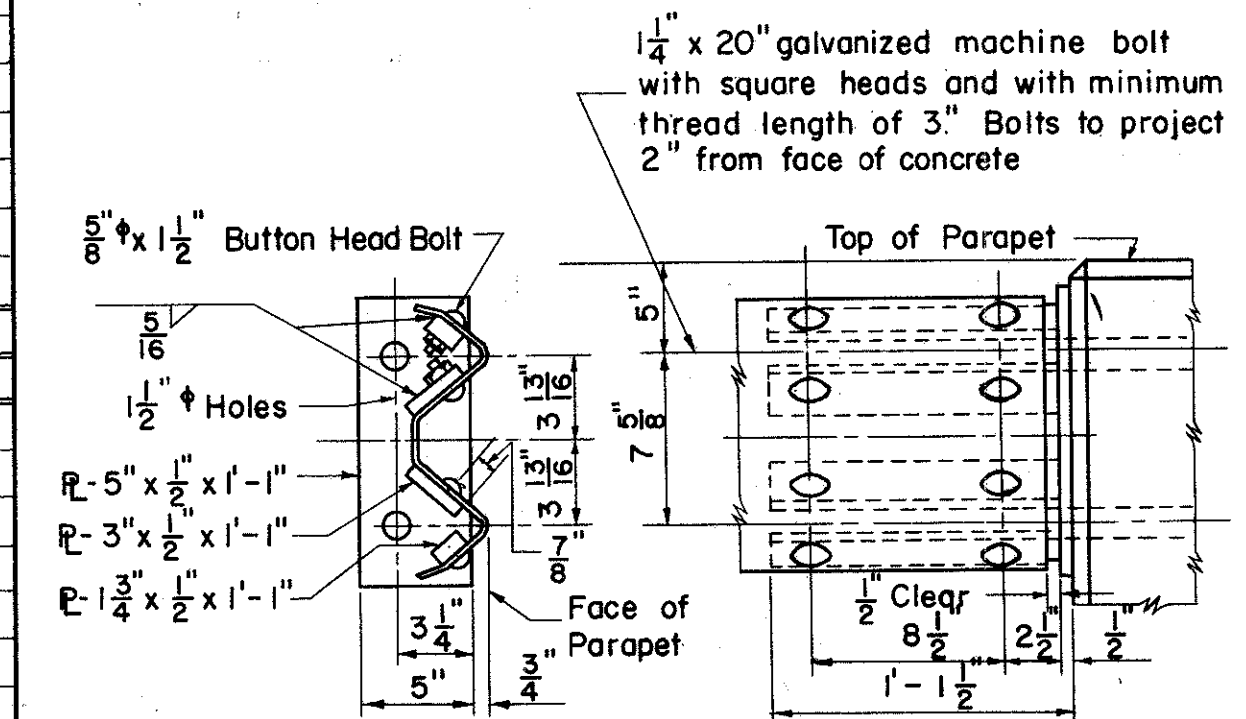
* RE401

REINFORCING STEEL LIST

ABUTMENTS										SUPERSTRUCTURE										PIERS										REPLACEMENT BARS							
MARK	ABUT. N.B.	ABUT. S.B.	LENGTH	WEIGHT		TYPE	A	B	VARIES BY	No. of Ea.	MARK	No.	LENGTH	WEIGHT	TYPE	A	B	VARIES BY	No. of Ea.	MARK	PIER #1	PIER #2	PIER #3	PIER #4	LENGTH	WEIGHT		TYPE	A	B	VARIES BY	No. of Ea.	MARK	No.	LENGTH	WEIGHT	TYPE
				N.B.	S.B.						NORTH BRIDGE		SOUTH BRIDGE											N.B.		S.B.							REPLACEMENT BARS				
F 601	26		10'-3"	400		Str.					TOTAL 68,207																										
F 602	54		12'-2"	987		2	10'-3"	2'-2"			TOTAL 80,066																										
F 603	26		3'-0"	117		Str.					TOTAL 27,474										33,184 (Includes Spirals)																
F 604	14	14	9'-9"	205	205	Str.					TOTAL 15,480										16,196																
F 605		80	9'-1"		1091	2	8'-9"	4"			TOTAL 8,066																										
F 606		36	6'-11"		374	1	2'-4"	2'-7"			TOTAL 1,583																										
F 607		40	5'-5"		326	1	2'-4"	1'-1"			TOTAL 1,410																										
F 608	14	14	17'-0"	358	358	Str.					TOTAL 49																										
F 609	132		11'-7"	2296		2	7'-6"	4'-3"			TOTAL 24,777																										
F 610	16	16	35'-11"	863	863	Str.					TOTAL 1,583																										
F 611	16	16	34'-0"	817	817	Str.					TOTAL 1,410																										
F 612	68		7'-6"	766		Str.					TOTAL 36																										
F 613	70		5'-5"	570		Str.					TOTAL 24,777																										
F 614		96	6'-5"		926	1	2'-10"	1'-1"			TOTAL 48																										
F 615		200	6'-4"		1902	2	6'-0"	4"			TOTAL 46																										
F 616		88	9'-4"		1233	1	3'-7"	2'-6"			TOTAL 8																										
W 401	64	64	5'-10"	249	249	1	2'-9"	6"			TOTAL 418																										
W 402	28	28	5'-1" to 2'-5"	60	60	1	1'-5" to 8"	1'-3"	3"	8	TOTAL 48																										
W 403	16	16	4'-5"	47	47	1	1'-8"	1'-3"			TOTAL 46																										
W 501	24	24	3'-6"	88	88	Str.					TOTAL 46																										
W 502	8	8	4'-0"	34	34	Str.					TOTAL 46																										
W 503	16	16	2'-8"	45	45	Str.					TOTAL 46																										
W 504	68	68	4'-3"	307	307	Str.					TOTAL 46																										
W 505	14	14	19'-9"	289	289	Str.					TOTAL 46																										
W 506	8	8	2'-8"	181	181	Str.					TOTAL 46																										
W 507	20	20	15'-6"	324	324	Str.					TOTAL 46																										
W 508	14	14	11'-6"	168	168	Str.					TOTAL 46																										
W 509	8	8	14'-0"	117	117	Str.					TOTAL 46																										
W 510	20	20	8'-0"	167	167	Str.					TOTAL 46																										
A 501	30	30	33'-8"	1054	1054	Str.					TOTAL 46																										
A 502	30	30	32'-1"	1004	1004	Str.					TOTAL 46																										
A 503	132	132	5'-2"	713	713	1	1'-0"	3'-5"			TOTAL 46																										
A 601	128	128	13'-7"	2611	2611	4					TOTAL 46																										
A 901	20	16	10'-6"	643	643	3	1'-3"	8'-0"			TOTAL 46																										
TOTAL				15,480	16,196											TOTAL 27,474										33,184 (Includes Spirals)											

NOTES:

All dimensions are out to out of the bar.
 Bar Size is indicated in the bar mark. The first digit where three digits are used, and the first two where four are used, indicate the bar size number. For example, A700 is a No. 7 size bar & A1014 is a No. 10 size.
 The length shown in the bar list for the spiral bars is the distance from the top of the footing to the bottom of the cap.
 The number of turns shown is the length divided by the pitch, plus 3 turns (total number of closed coils) expressed as the nearest whole number.
 Spiral bars shall not have deformations but shall in other respects conform to Item S-4.
 1/2 closed coils shall be provided at the ends of each spiral unit.
 Four steel channel, tee or angle spacers, weighing approximately 0.68 lbs. per lin. ft., shall be provided for each spiral unit. They shall be equally spaced along the periphery of the coil. The number of pounds of spacers, based on 0.68 lbs. per lin. ft., will be paid for as reinforcing steel and is included in the tabulated quantity of spiral bars.
 Replacement Bars: If reinforcing bars are fabricated from stock which has previously been tested and approved by the Ohio Testing Laboratory, test samples as provided in Sec. S-4.02 need not be furnished and replacement bars will not be required.



NOTE:
Guard Rail End Connection Assembly shall be galvanized after welding.

GUARD RAIL DETAIL
Included with Item S-14 for payment

N.B. denotes North Bridge
S.B. denotes South Bridge

SEC. C-31A

PREPARED BY
CAPITOL ENGINEERING ASSOCIATES, DILLSBURG, PA.
FOR
STATE OF OHIO
DEPARTMENT OF HIGHWAYS
DIVISION OF DESIGN AND CONSTRUCTION
BUREAU OF BRIDGES
REINFORCING BAR SCHEDULE
BRIDGE NO. LAK-1-12 71 N 4 S.
S.R.I. OVER HERMITAGE ROAD
LAKE COUNTY
STA. 318 + 65.65

DESIGNED	DRAWN	TRACED	CHECKED	REVISED	DATE	REVISED
----------	-------	--------	---------	---------	------	---------