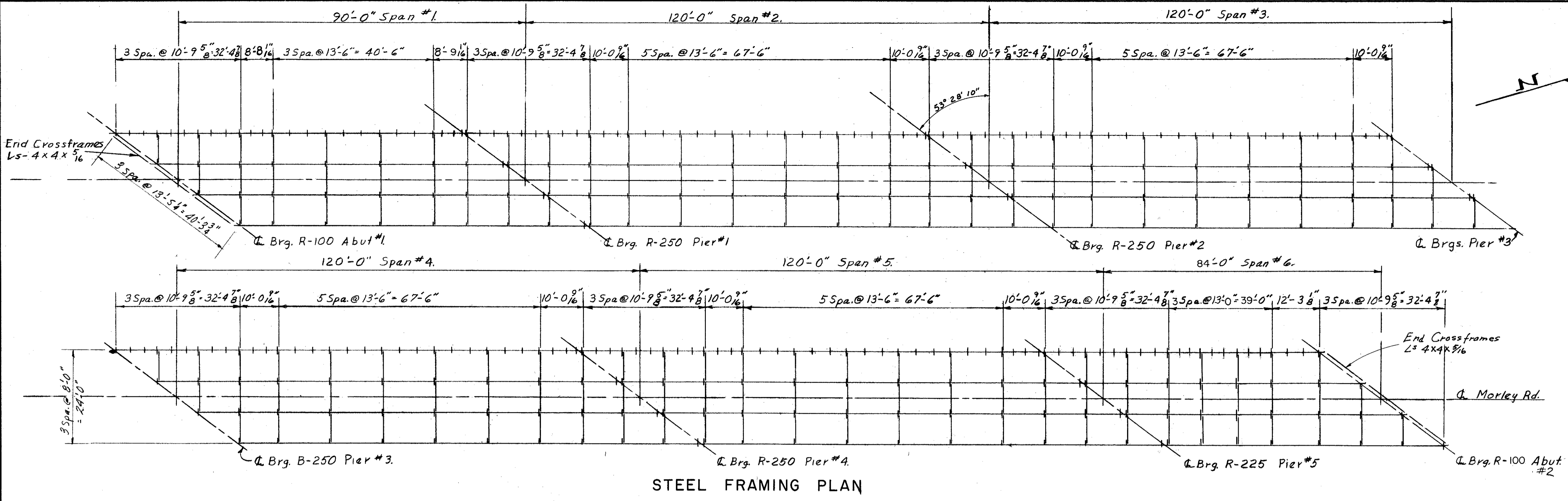


LAKE COUNTY  
 SEC. LAK-1-10.38



REFERENCE shall be made to Standard Drawing CSB-2-56, Sheets 2, 3 of 6, revised 2-2-59 for Details of End Dams, Gutters, Pipe Drains, Scuppers, Curb Plates and End Crossframes.

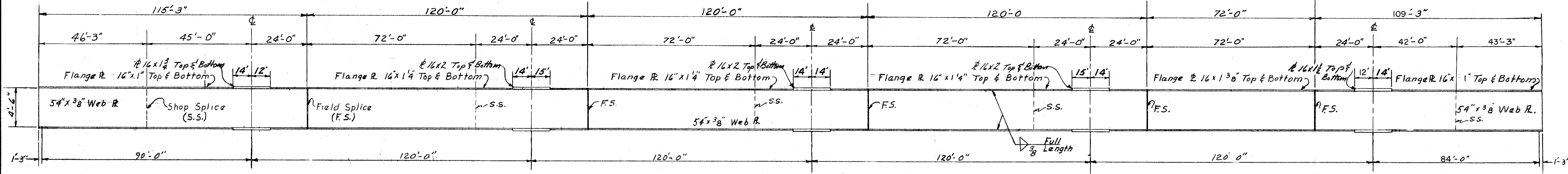
REFERENCE shall be made to Standard Drawing RB-1-55 revised 2-2-59 for Details of Rockers and Bolsters.

REFERENCE shall be made to Standard Drawing AR-1-57 revised 2-2-59 for Details of Aluminum Railing Type A and Concrete Parapet Details.

PAINTING: After erection and after the shop coat has been cleaned and, where necessary, repainted in accordance with Sec. 8.04, an additional coat of the same paint as used in the shop shall be applied over the outside face of the outside steel girders and all sides of the bottom flange.

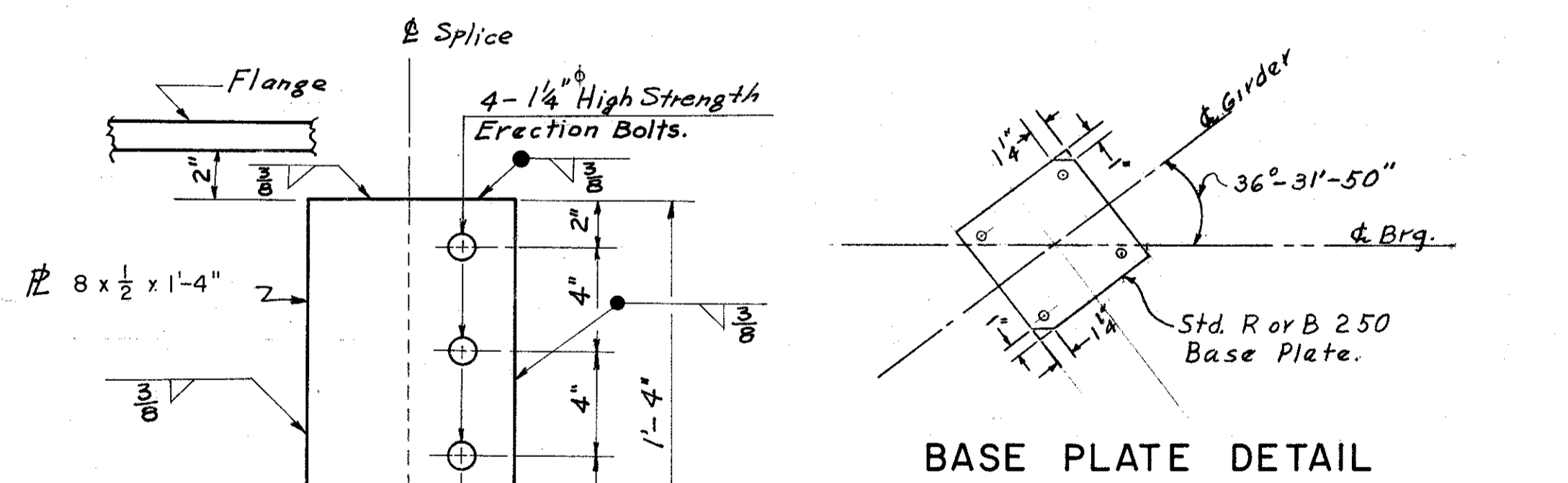
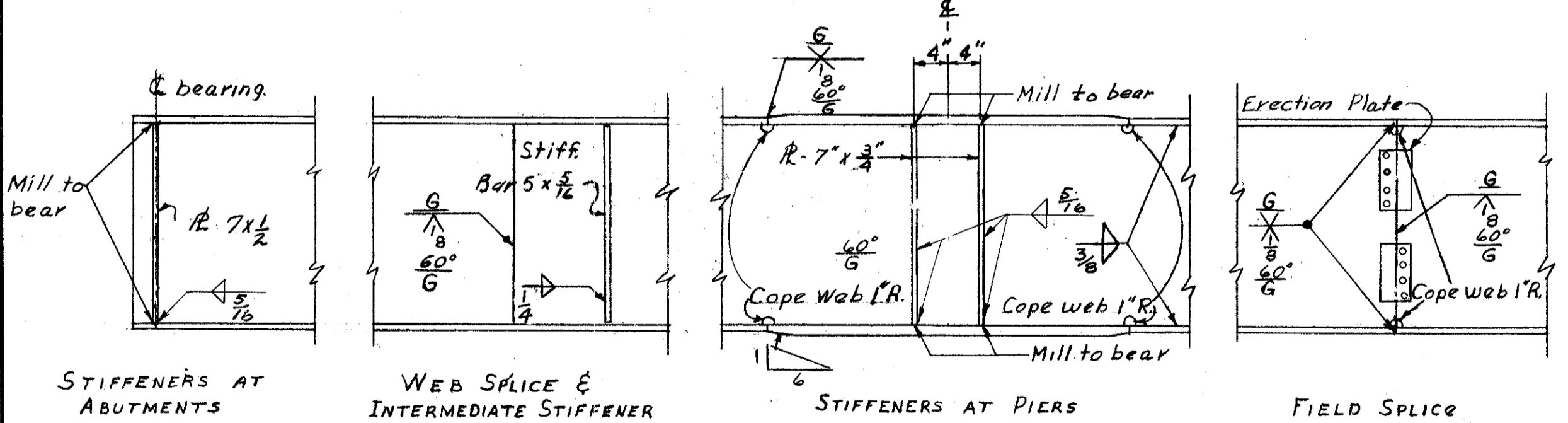
SHOP DRAWINGS for the girders shall include an overall layout with dimensions showing the relative unloaded vertical position of each girder or girder segment with respect to the others in the same girder line and with respect to a full length base or work line taking into account (camber and) the profile of the highway.

SHOP ASSEMBLY: At least three adjacent girder segments shall be assembled in the shop in their correct unloaded positions as shown on the shop drawing layout required in the above note so that the faced joints for welding the segments together may be checked for proper fit-up.



GIRDER ELEVATION

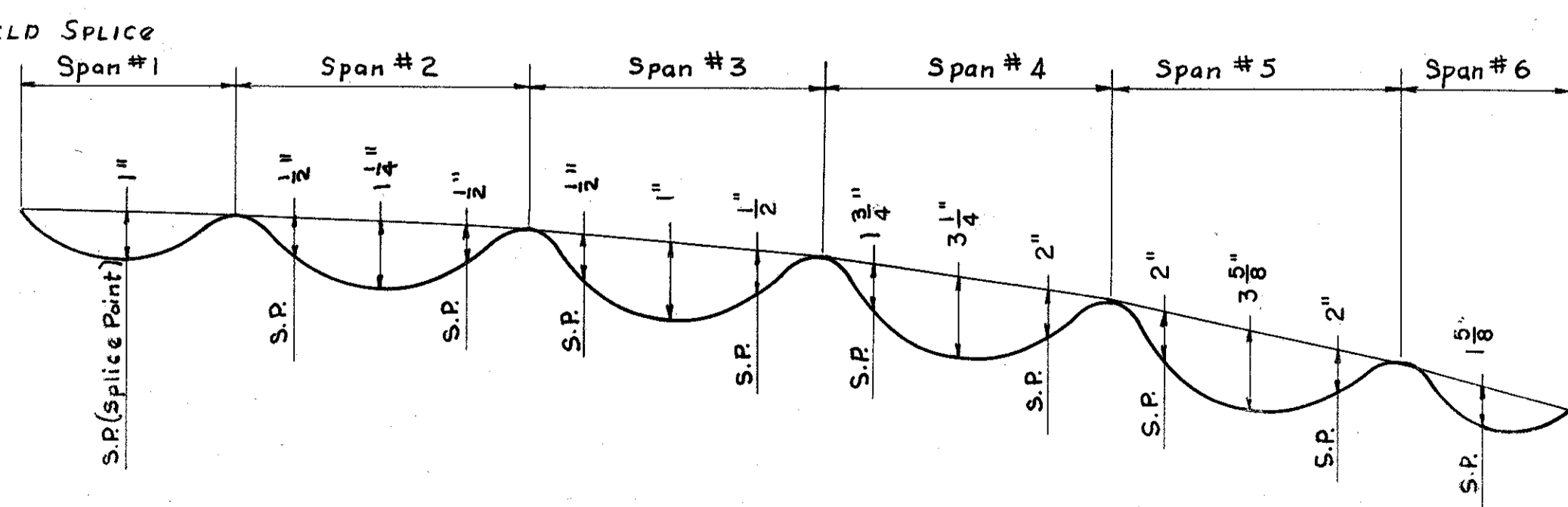
NOTE: V-Groove Butt welds to be finished smooth and flush with the base material on all surfaces.  
 Clip all Stiffeners to clear Flange-Web Welds as required.  
 Stiffeners to be on both faces of all girders.



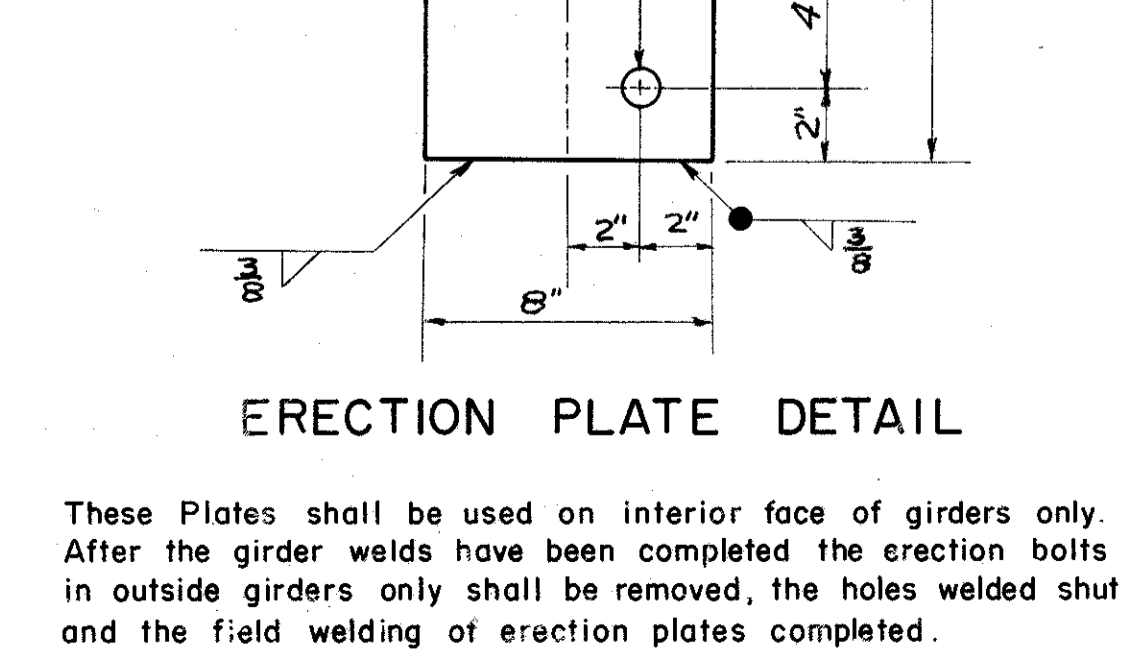
BASE PLATE DETAIL

DEFLECTION & CAMBER

	SPAN NO. 1	SPAN NO. 2	SPAN NO. 3	SPAN NO. 4	SPAN NO. 5	SPAN NO. 6
Deflection due to weight of steel	3/16"	3/8"	1/4"	1/4"	3/8"	1/8"
Deflection due to remaining dead load	9/16"	7/8"	3/4"	3/4"	3/4"	1/4"
Convexity required for vertical curve	0"	0"	0"	2/4"	2 1/2"	1 1/4"
Sum of deflection and convexity	3/4"	1 1/4"	1"	3 1/4"	3 5/8"	1 5/8"
Required camber	1"	1 1/4"	1"	3 1/4"	3 5/8"	1 5/8"



CAMBER DIAGRAM



ERECTION PLATE DETAIL

SEC. C-31A

PREPARED BY  
 CAPITOL ENGINEERING ASSOCIATES, DILLSBURG, PA.  
 FOR

STATE OF OHIO  
 DEPARTMENT OF HIGHWAYS  
 DIVISION OF DESIGN AND CONSTRUCTION  
 BUREAU OF BRIDGES

STEEL FRAMING PLAN  
 BRIDGE NO. LAK-1-1199  
 S.R.1 UNDER MORLEY ROAD  
 LAKE COUNTY

STA. 280 + 75.45

DESIGNED	DRAWN	TRACED	CHECKED	REVISED	DATE	REVISED
J.M.	J.T.A.		B.E.T.		8-1-59	3-1-60