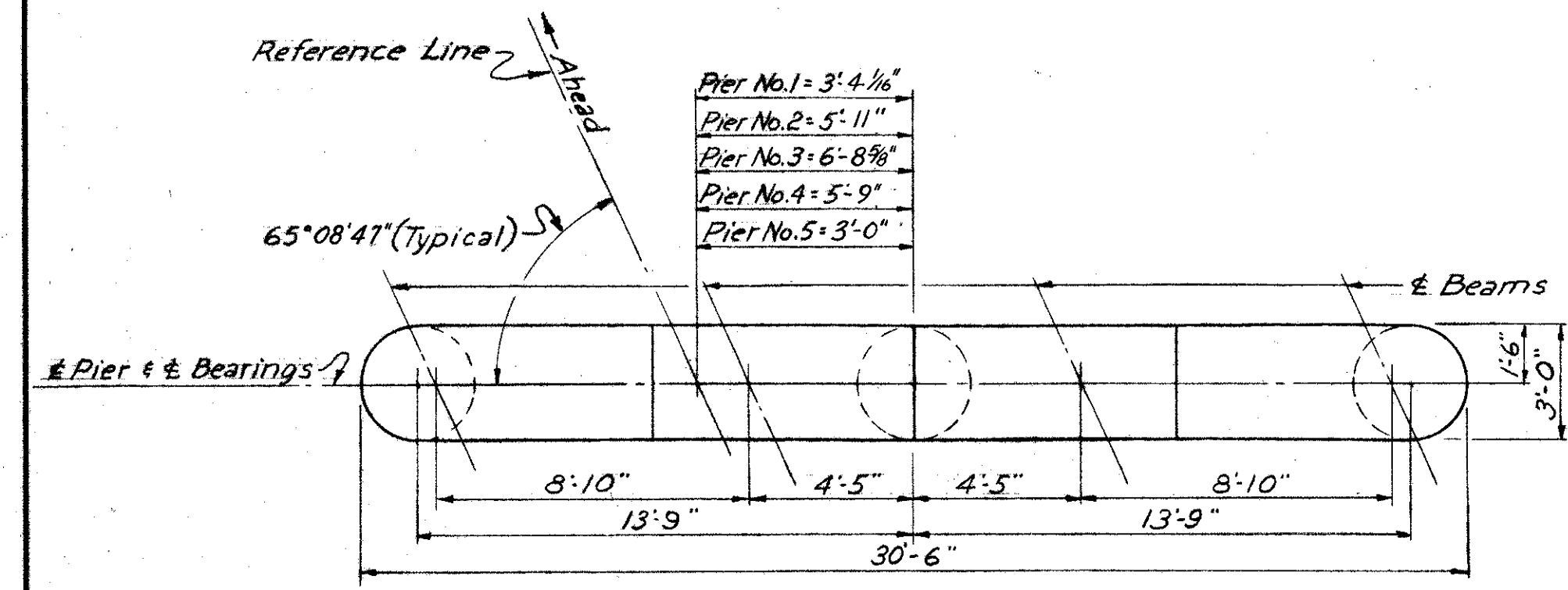


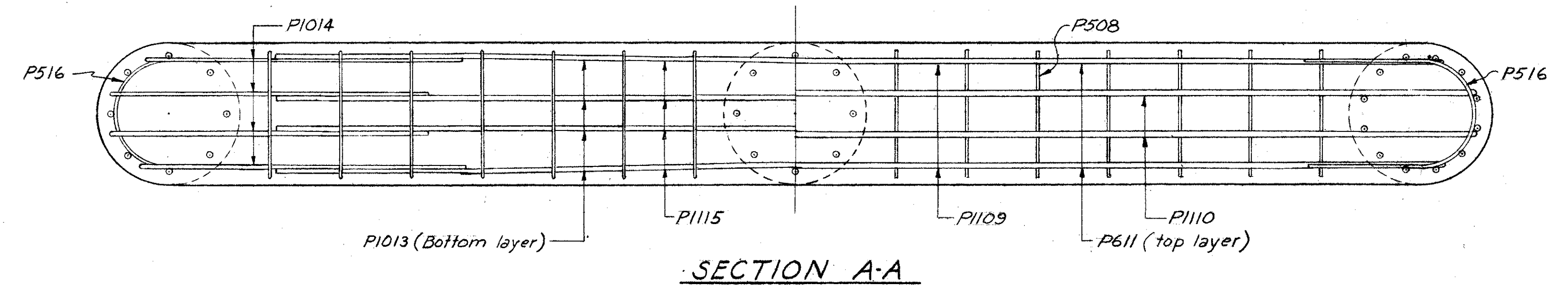
LAKE COUNTY
SEC. LAK-1-10.38

NOTES

- FOOTINGS shall extend a minimum of 3" into solid shale or to the elevation shown, whichever is lower.
- FOUNDATION BEARING PRESSURE: Pier footings are designed for a maximum bearing pressure of 5 tons per square foot.
- Special care shall be taken in placing reinforcing steel in the bridge seat so that it will not interfere with the drilling of anchor bolt holes.

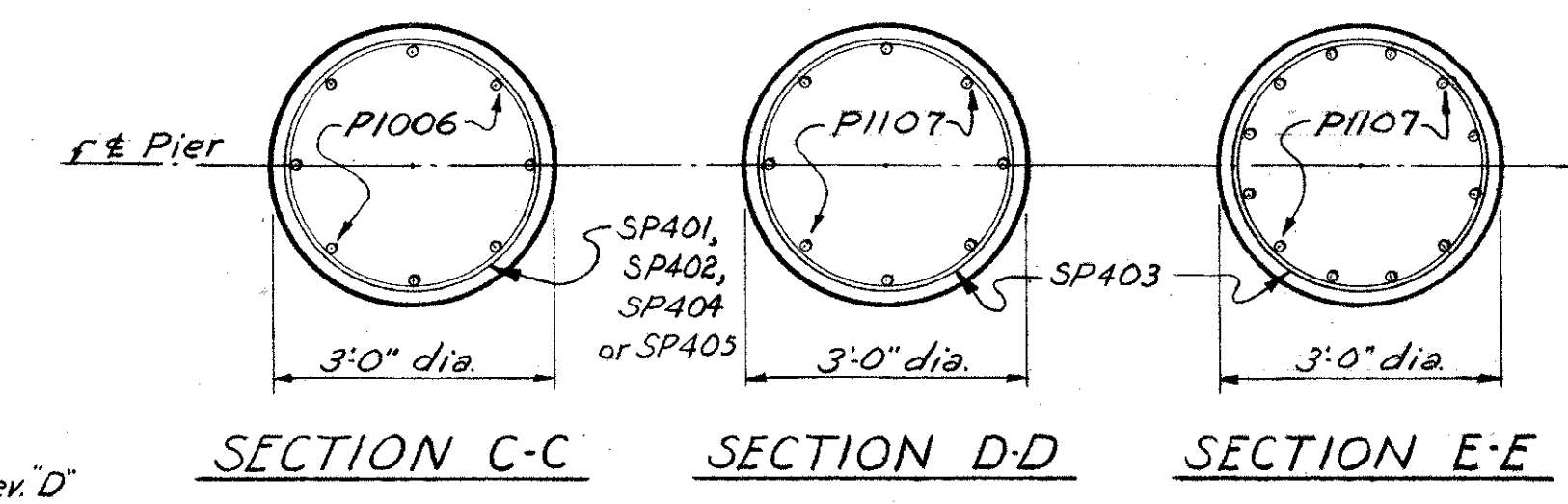


TYPICAL PIER CAP PLAN

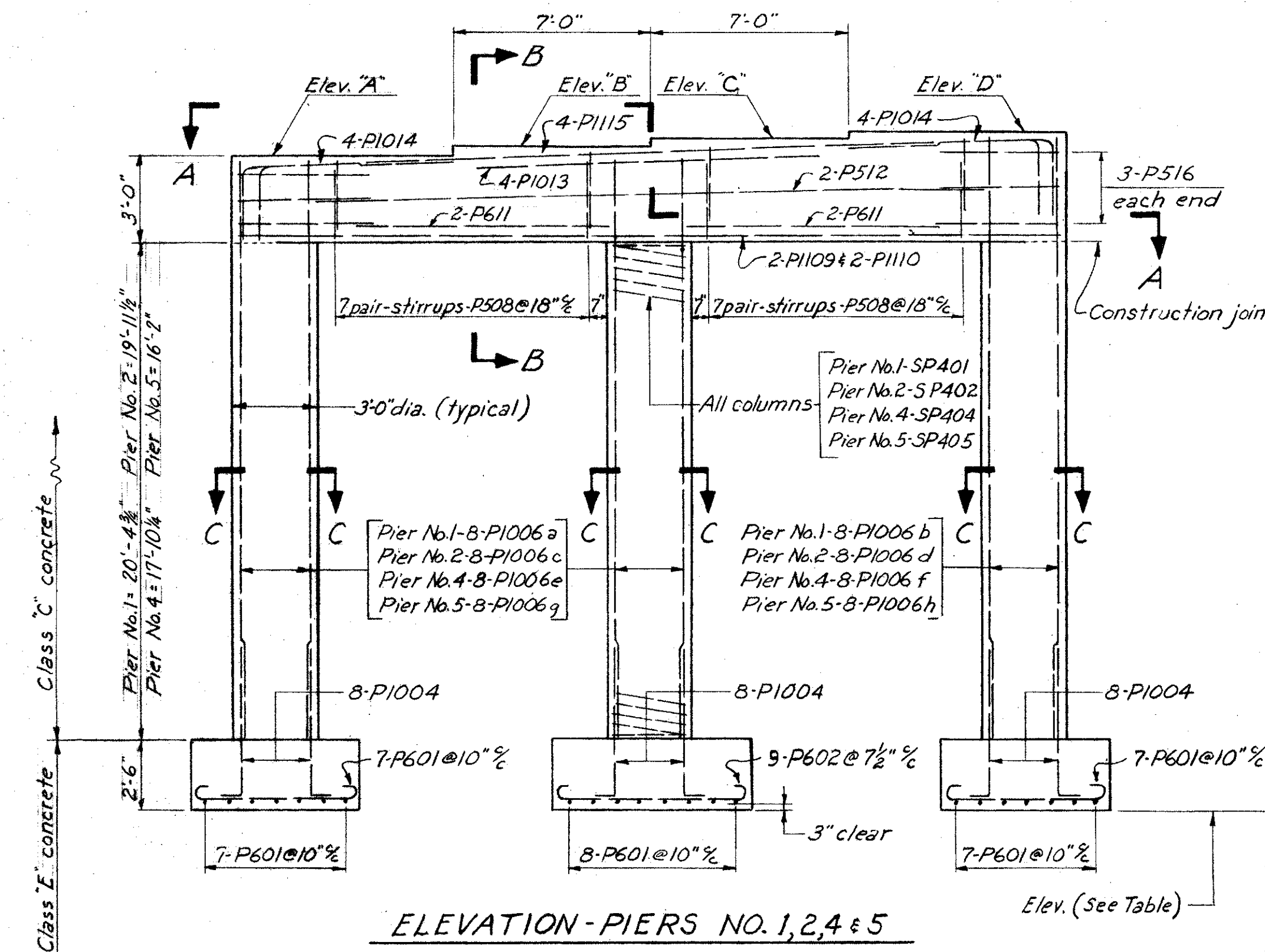


SECTION A-A

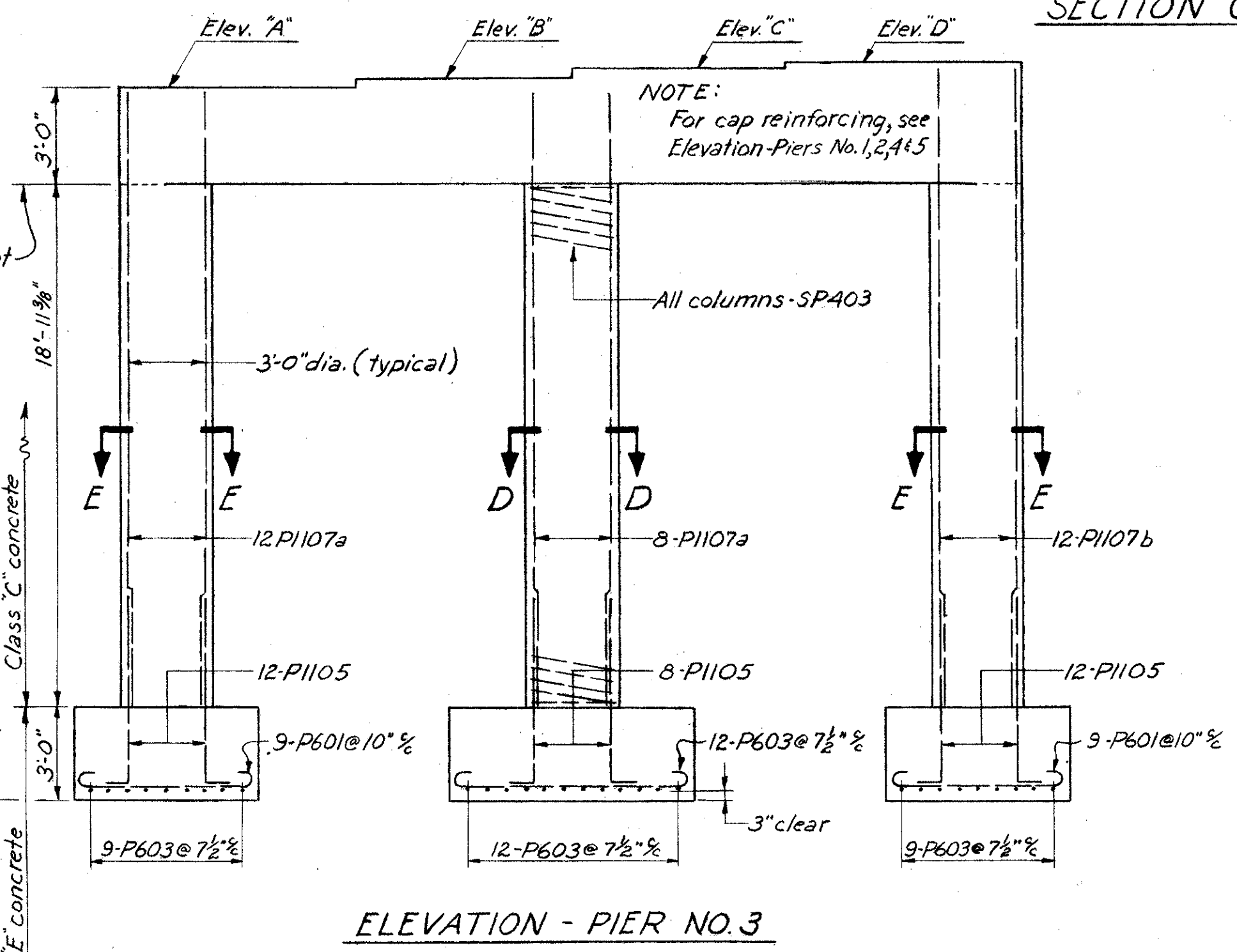
	A	B	C	D	Footing
Pier No. 1	861.90	862.13	862.35	862.57	836.00
Pier No. 2	860.96	861.22	861.47	861.72	835.50
Pier No. 3	859.45	859.73	860.02	860.30	834.50
Pier No. 4	857.35	857.66	857.98	858.30	834.00
Pier No. 5	854.67	855.02	855.37	855.72	833.00



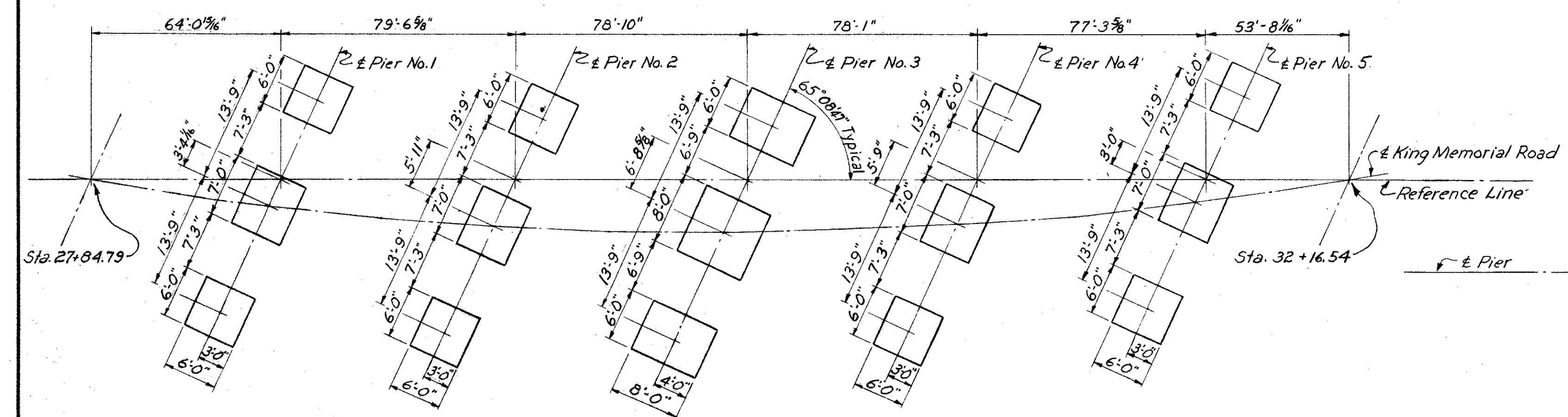
SECTION C-C SECTION D-D SECTION E-E



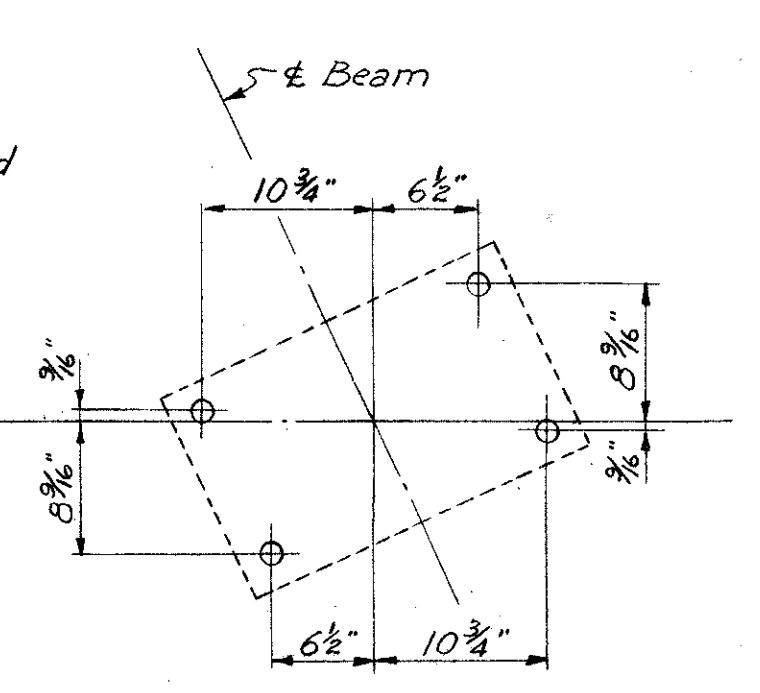
ELEVATION - PIERS NO. 1, 2, 4 & 5



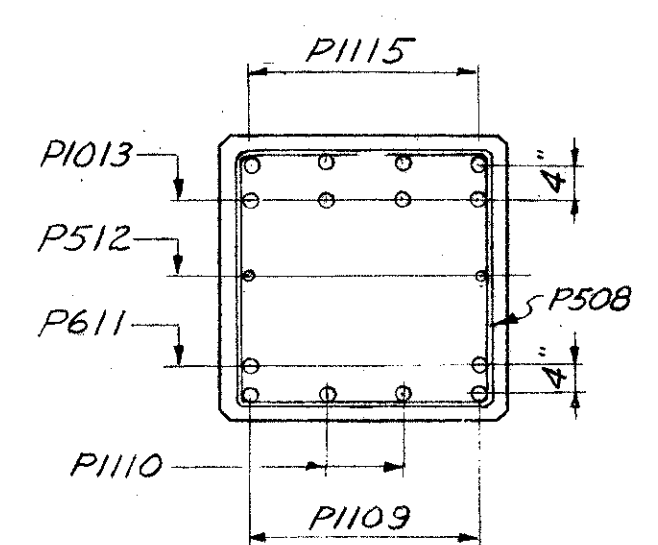
ELEVATION - PIER NO. 3



PIER FOOTING LAYOUT PLAN



ANCHOR BOLT LAYOUT PIER NO. 3



SECTION B-B

SEC. C-31A

PREPARED BY
CAPITOL ENGINEERING ASSOCIATES, DILLSBURG, PA.
FOR

STATE OF OHIO
DEPARTMENT OF HIGHWAYS
DIVISION OF DESIGN AND CONSTRUCTION
BUREAU OF BRIDGES

PIERS
BRIDGE NO. LAK-1-1050
S.R.1 UNDER KING MEMORIAL ROAD
LAKE COUNTY
STA. 199+91.32

DESIGNED	DRAWN	TRACED	CHECKED	REVISED DATE	REVISED
zjm	zjm		RLL		3-1-60