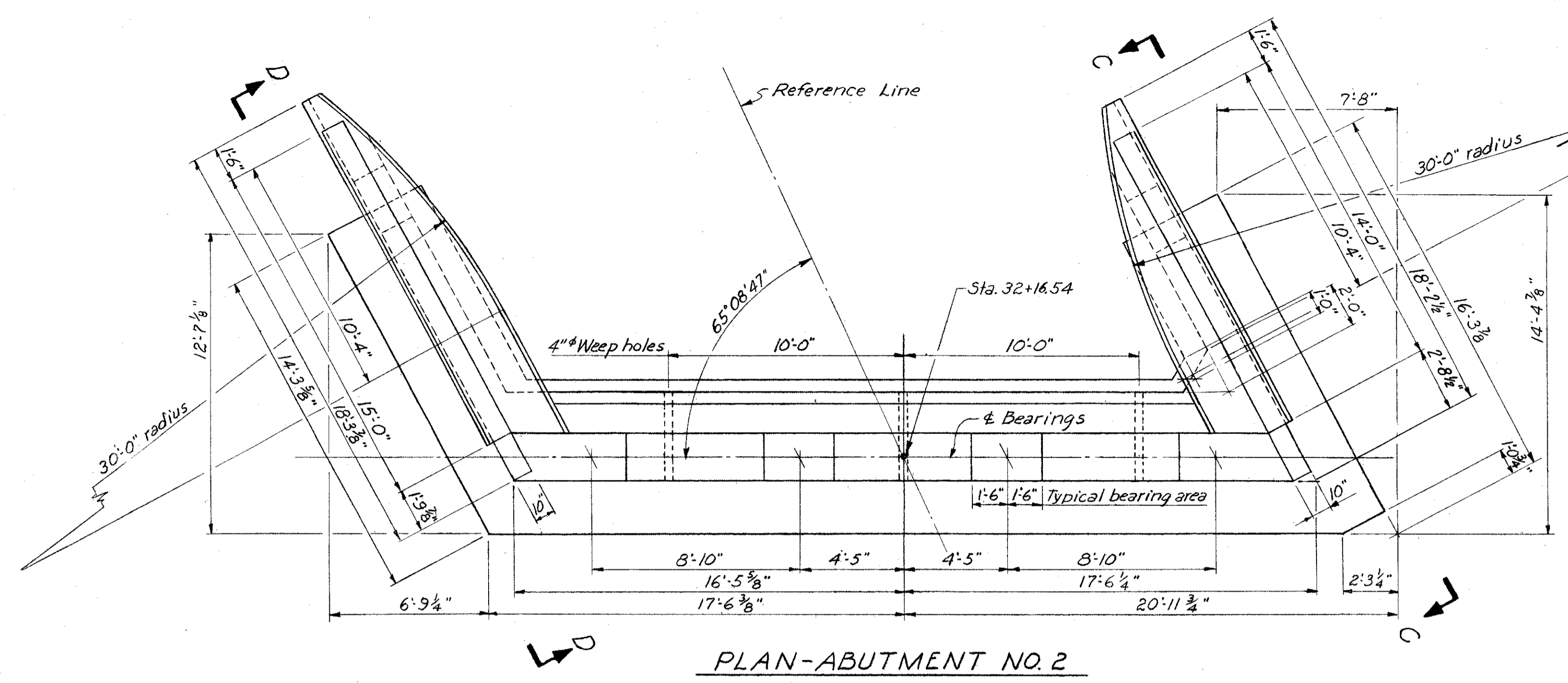
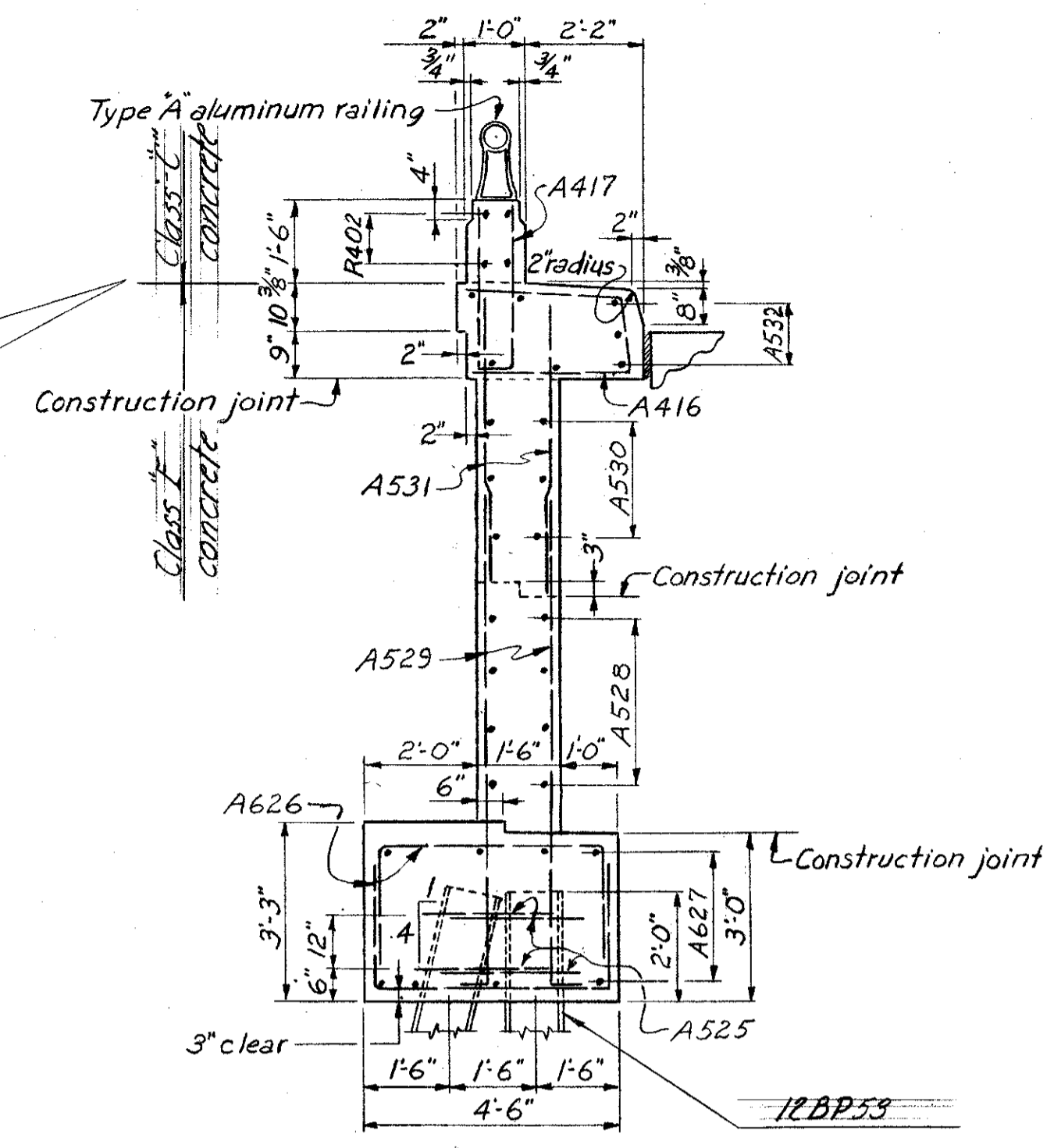


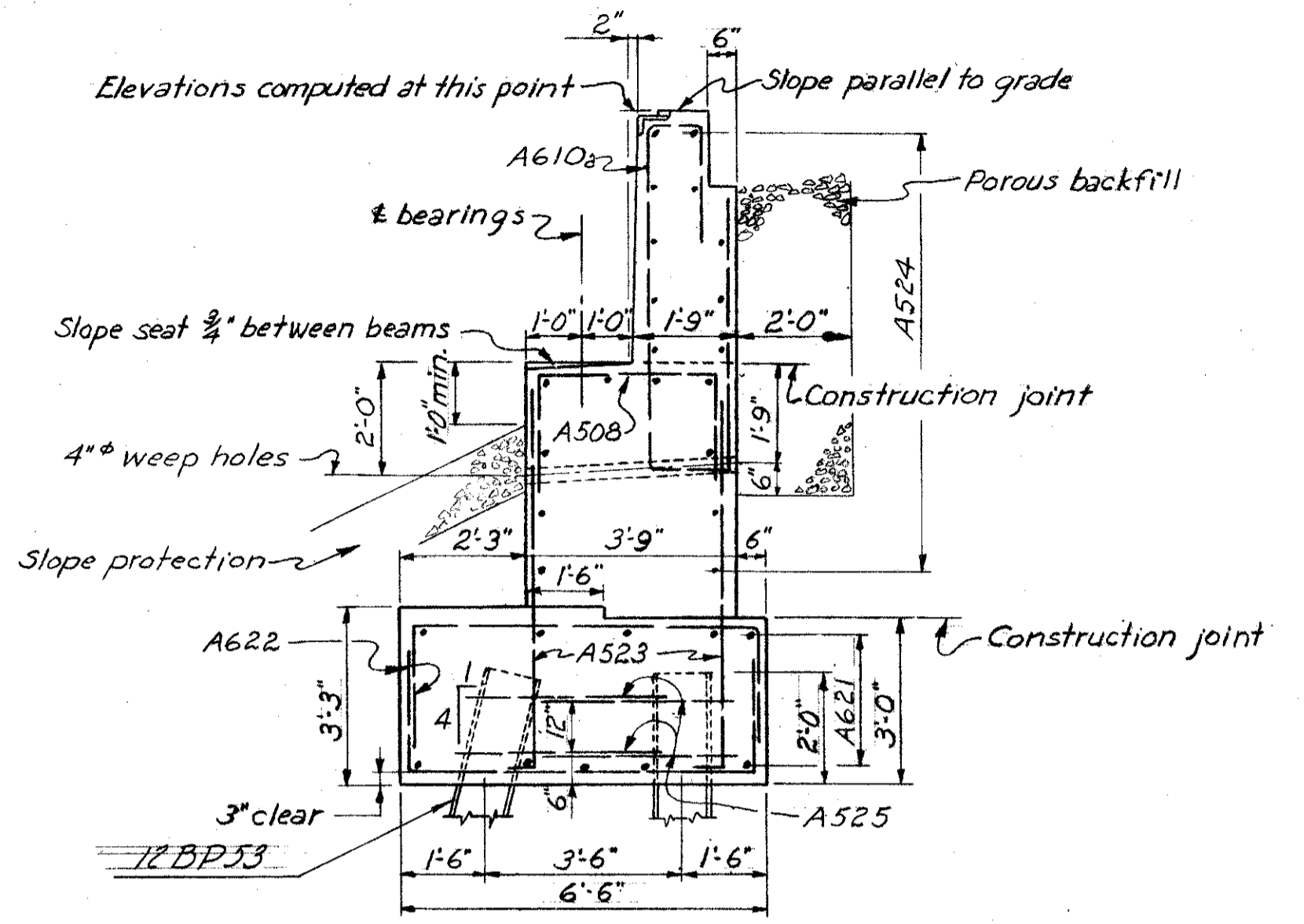
LAKE COUNTY
SEC. LAK-1-10.38



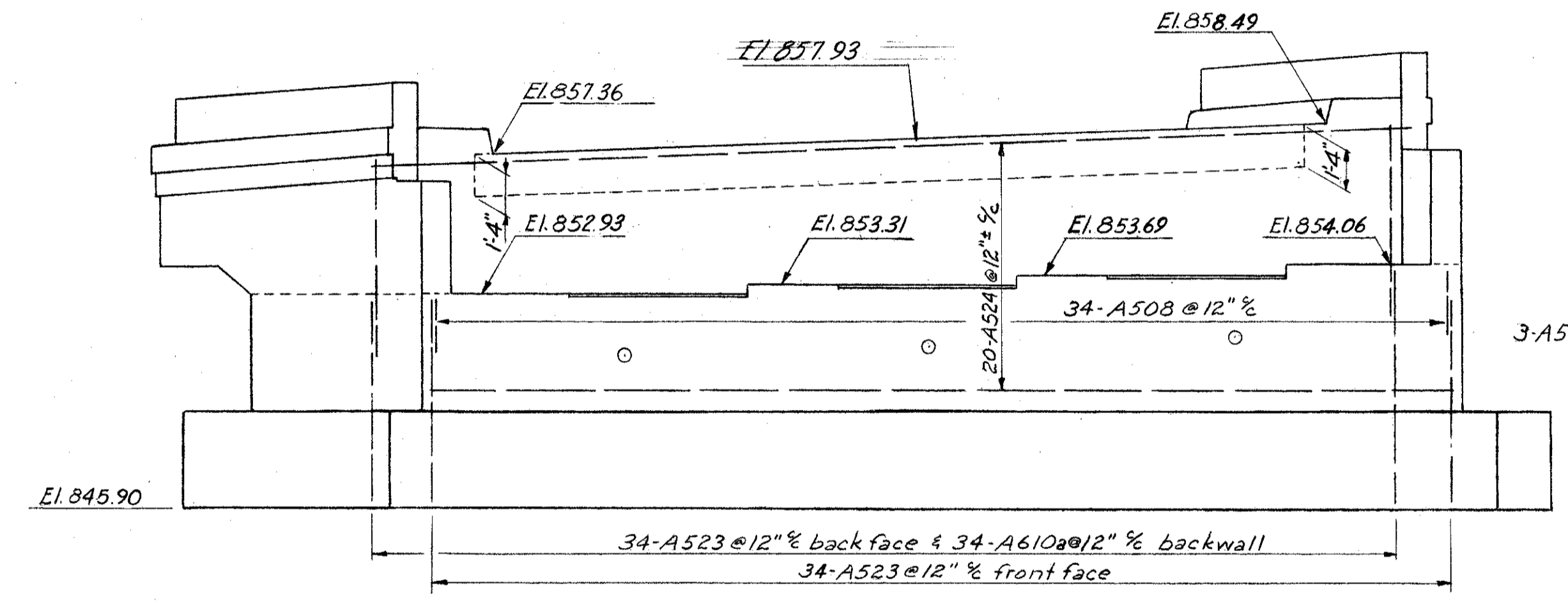
PLAN-ABUTMENT NO. 2



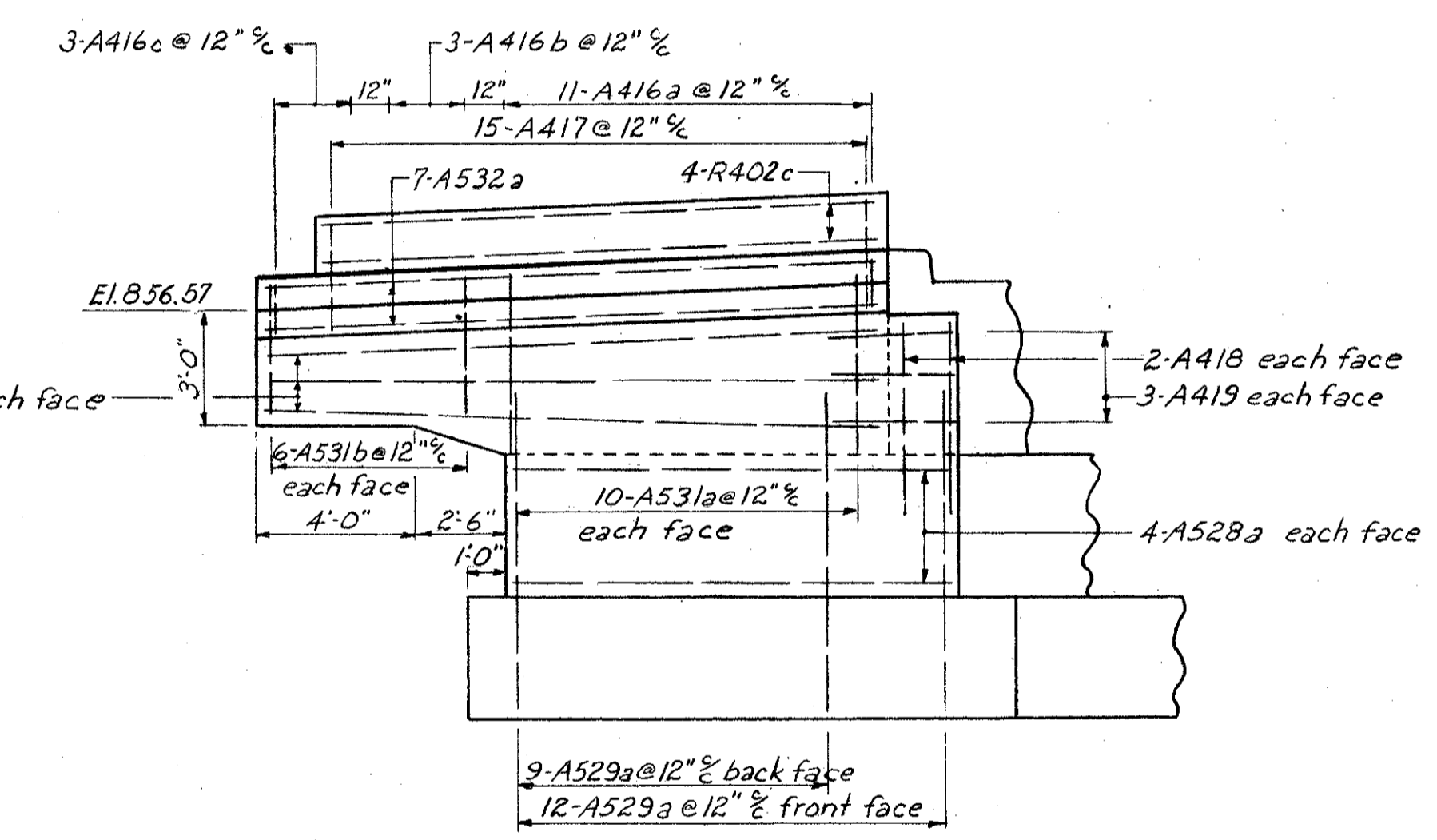
TYPICAL WING SECTION



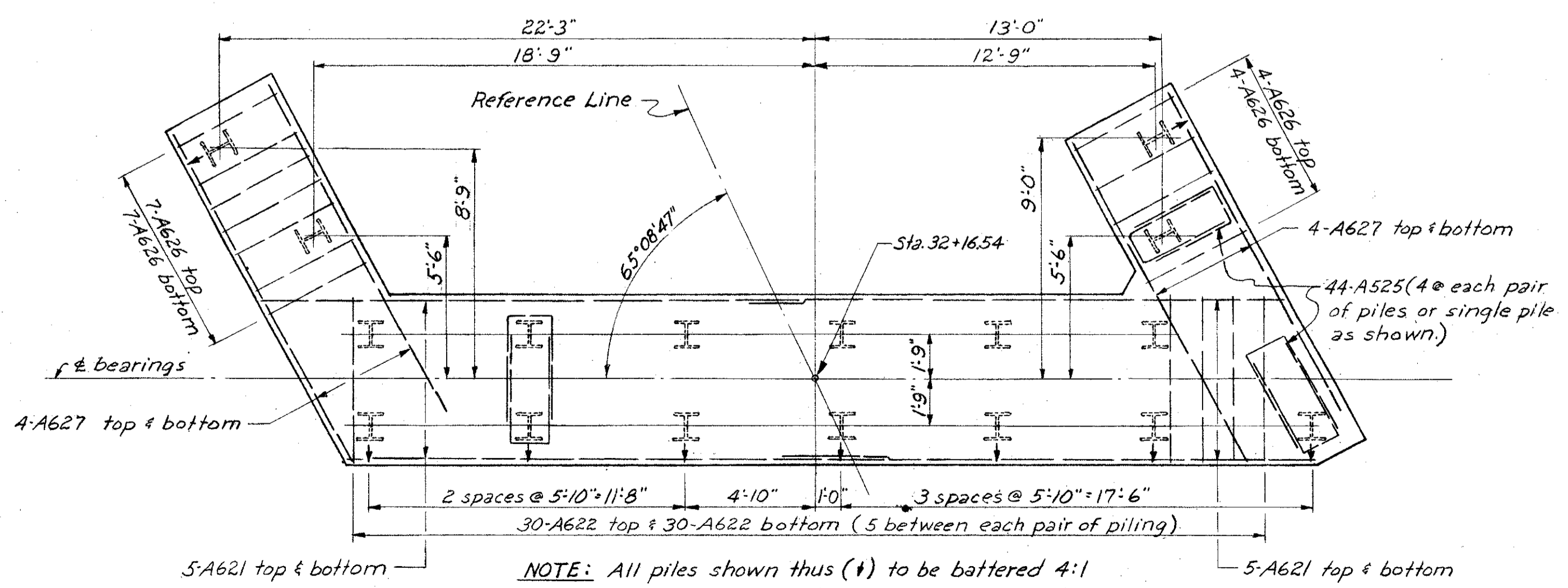
TYPICAL ABUTMENT SECTION



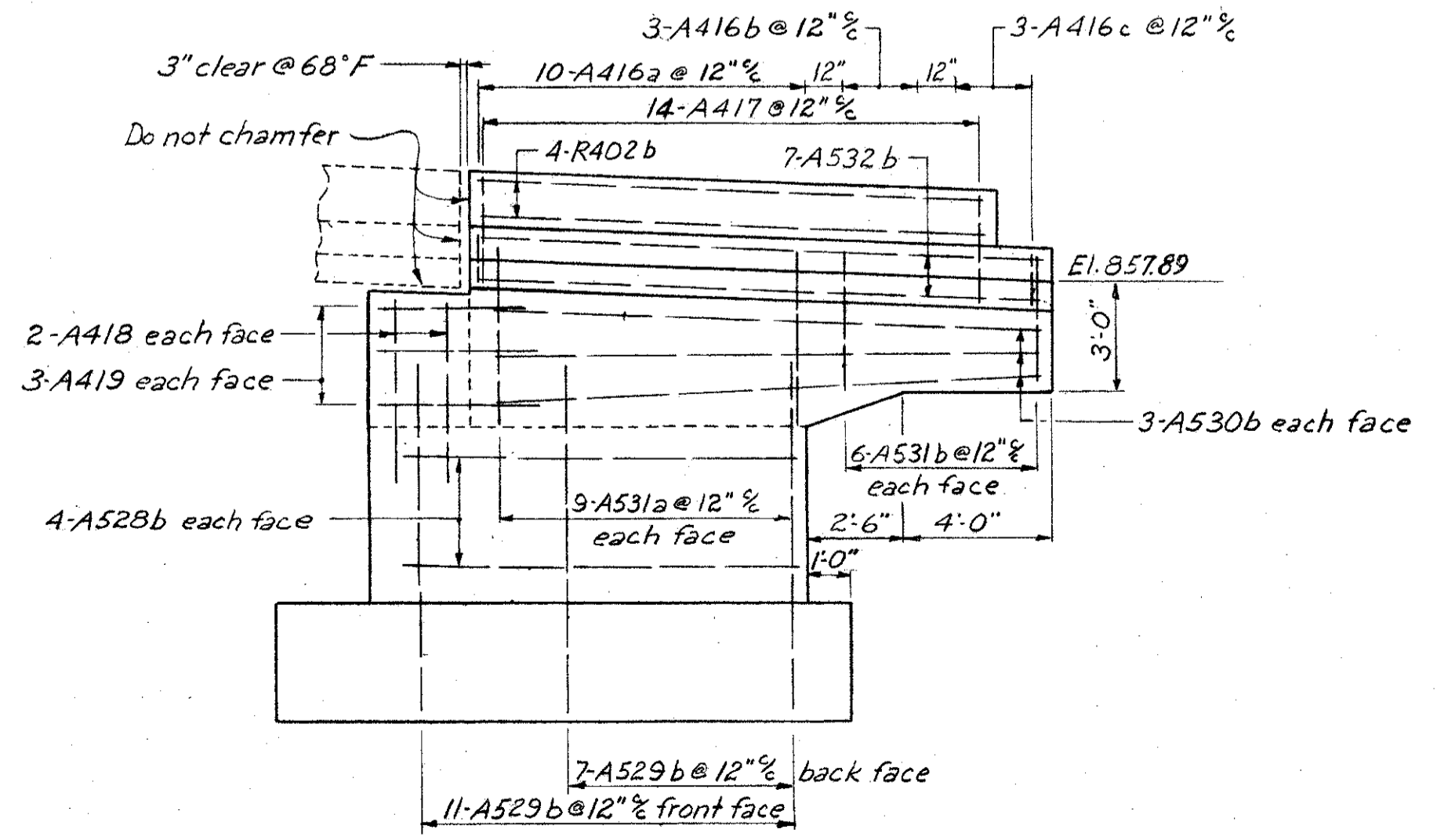
ELEVATION-ABUTMENT NO. 2



ELEVATION D-D



PILE LAYOUT & FOOTING REINFORCING



ELEVATION C-C

NOTES

• PILES shall be driven to firm contact with shale. If the length of penetration is approximately equal to the depth to shale according to the bridge foundation investigation report, the firm contact shall be considered as attained when the capacity according to the formula in Sec. 5-18.05 is not less than the following value for a pile hammer of the indicated energy rating:
 43 tons per pile using a 7000 ft. lb. hammer
 36 tons per pile using a 11000 ft. lb. hammer
 34 tons per pile using a 15,000 ft. lb. hammer
 If the energy rating of the hammer is between the ratings shown above, the required formula capacity shall be determined by interpolation. The design load is 25 tons per pile.
 • ADDITIONAL NOTES: For additional notes, see Abutment No. 1

SEC. C-31A

PREPARED BY
CAPITOL ENGINEERING ASSOCIATES, DILLSBURG, PA.
FOR

STATE OF OHIO
DEPARTMENT OF HIGHWAYS
DIVISION OF DESIGN AND CONSTRUCTION
BUREAU OF BRIDGES

ABUTMENT NO. 2
BRIDGE NO. LAK-1-1050
S.R. 1 UNDER KING MEMORIAL ROAD
LAKE COUNTY
STA. 199 + 91.32

DESIGNED	DRAWN	TRACED	CHECKED	REVISED DATE	REVISED
JFN	JFN		RJK		3-1-60