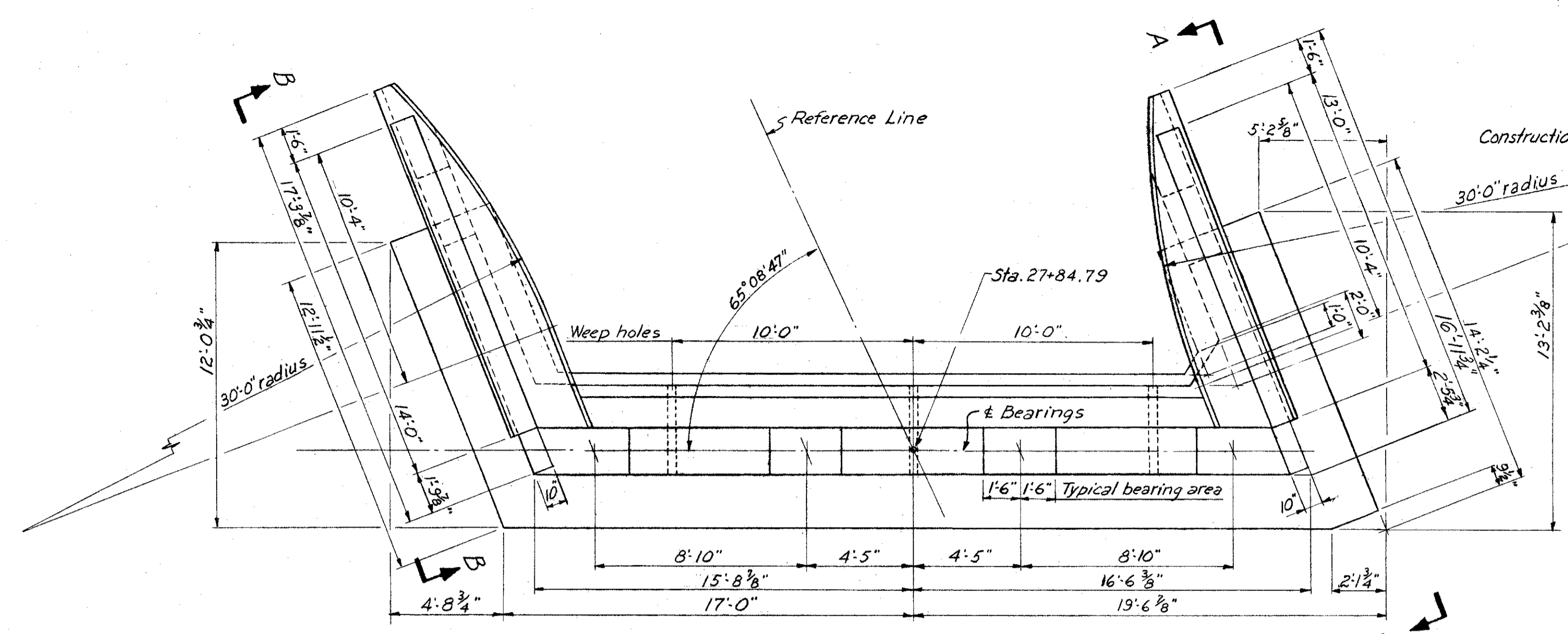


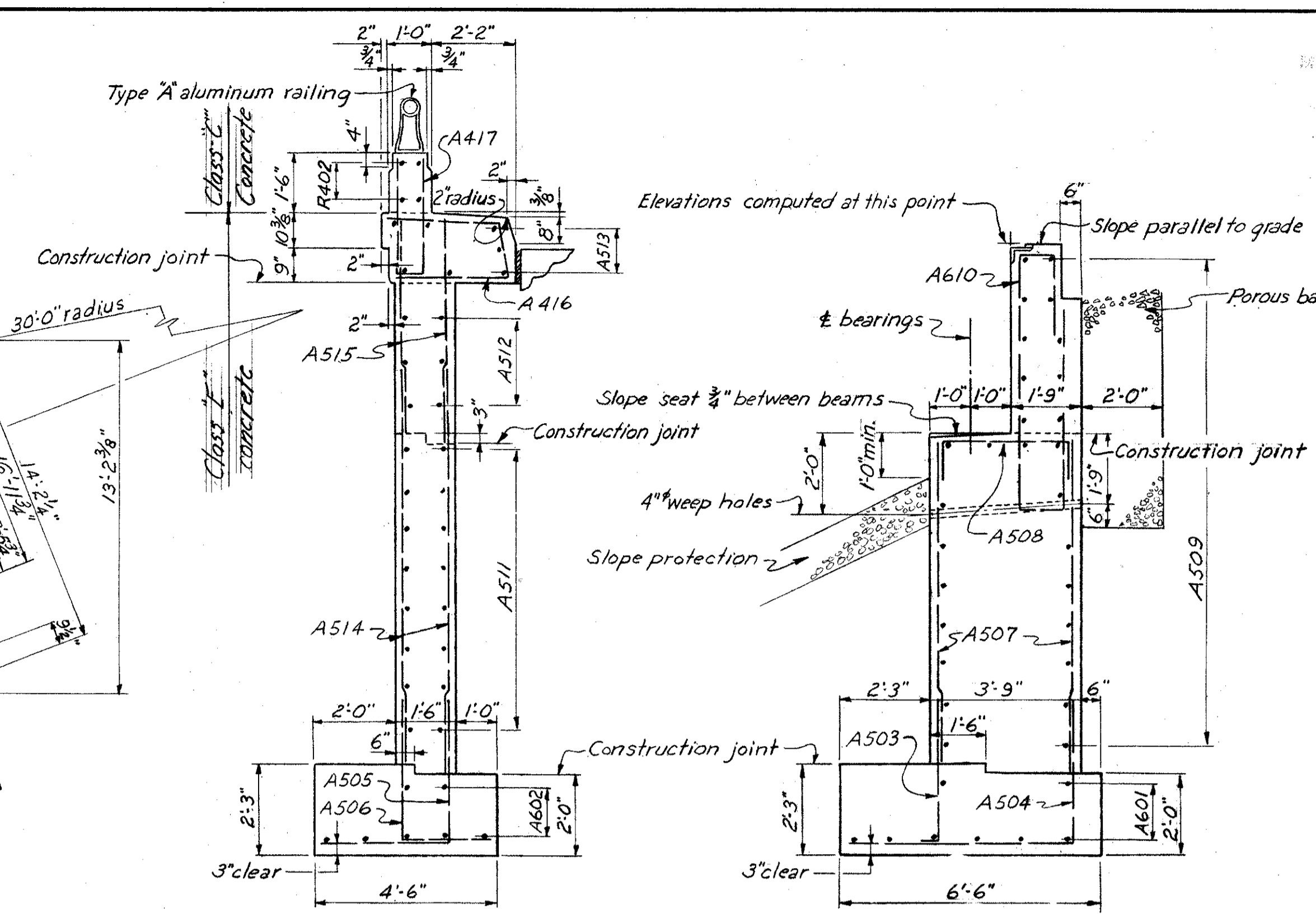
LAKE COUNTY
SEC. LAK-1-10.38

NOTES

- POROUS BACKFILL, 2 feet thick, full length of the abutment shall extend up to the underside of the approach slab and outward to the wings. Excavation therefore, in excess of that required for the abutment shall be considered as included in the bid price per cu. yd. for porous backfill.
- FOUNDATION BEARING PRESSURE: Abutment No. 1 footings are designed for a maximum bearing pressure of 2.3 tons per square foot.
- All abutment concrete shall be Class 'E'.
- EXCAVATION AND BACKFILL: Excavation quantity includes the removal of fill material between the surface of the proposed embankment and the bottom of footings.
- FOOTINGS shall extend a minimum of 3" into shale or to the elevation shown, whichever is lower.

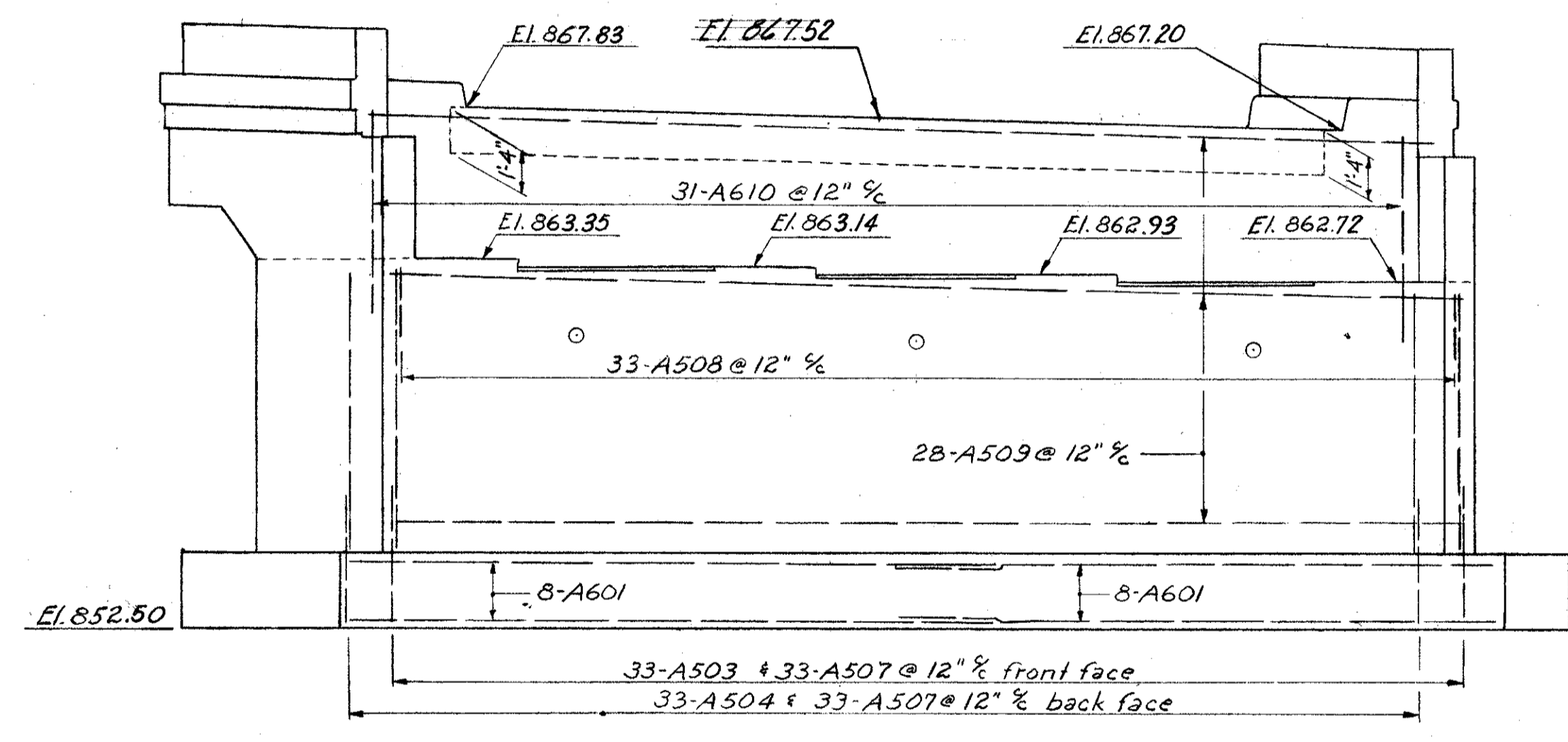


PLAN - ABUTMENT NO. 1

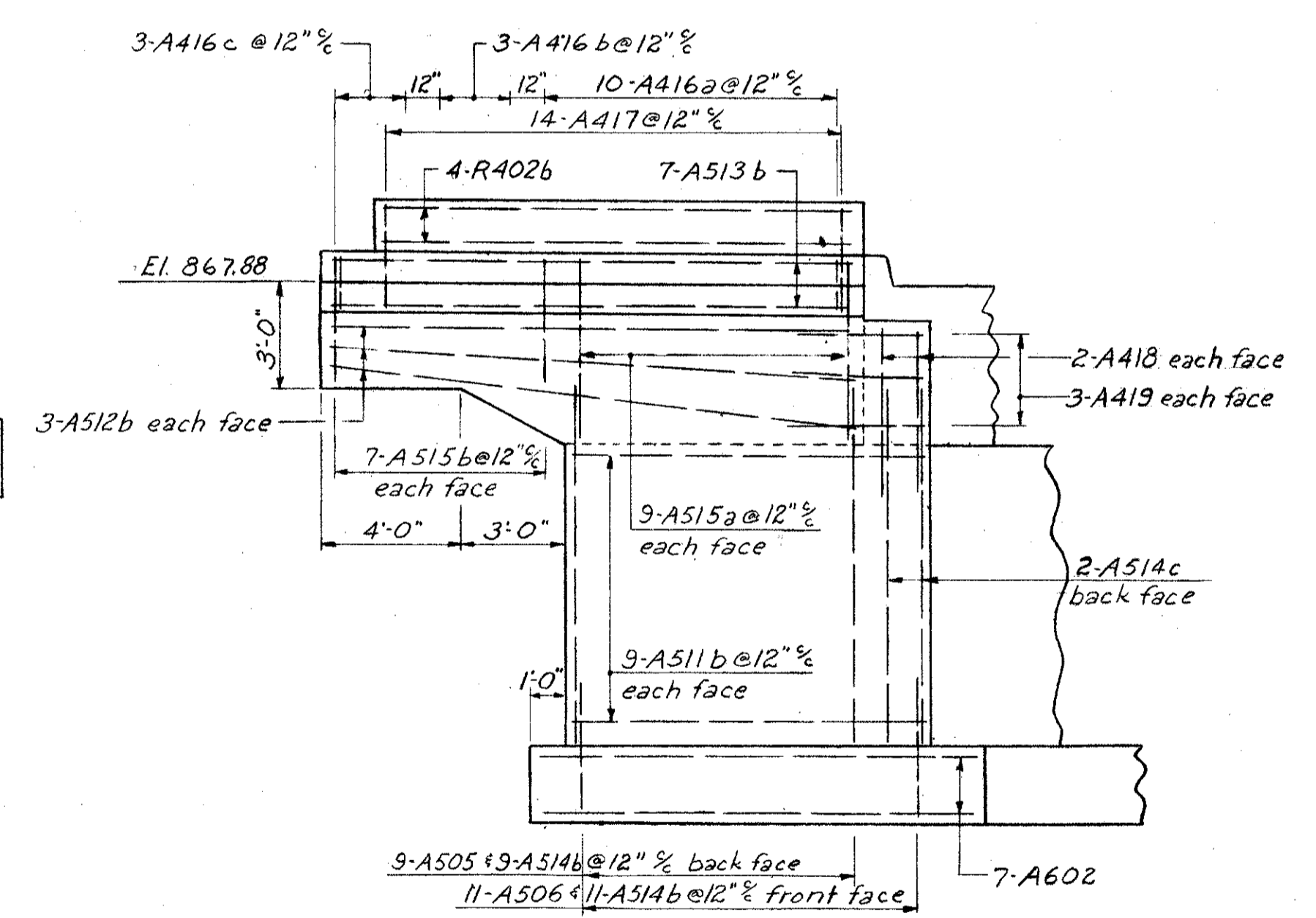


TYPICAL WING SECTION

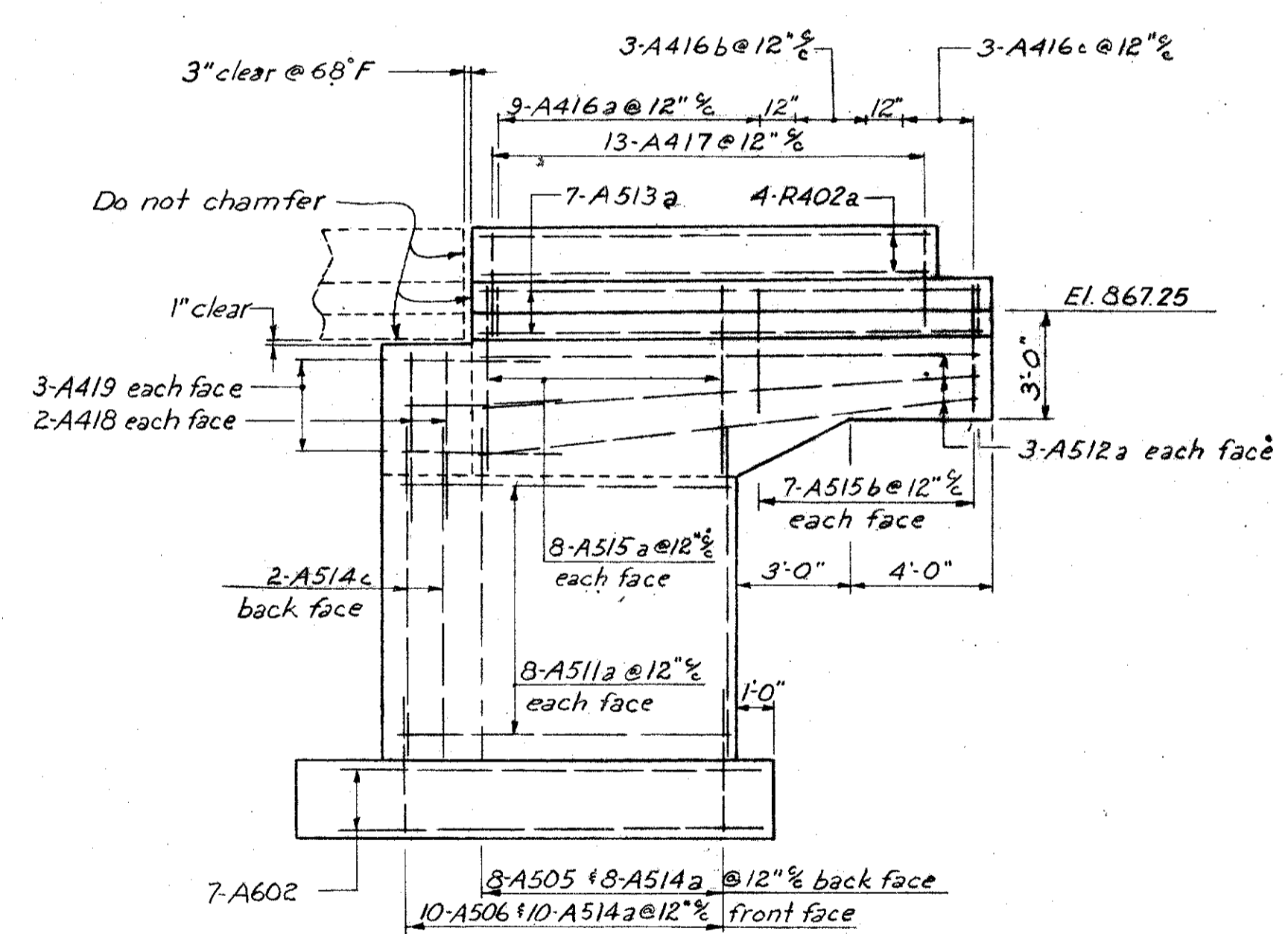
TYPICAL ABUTMENT SECTION



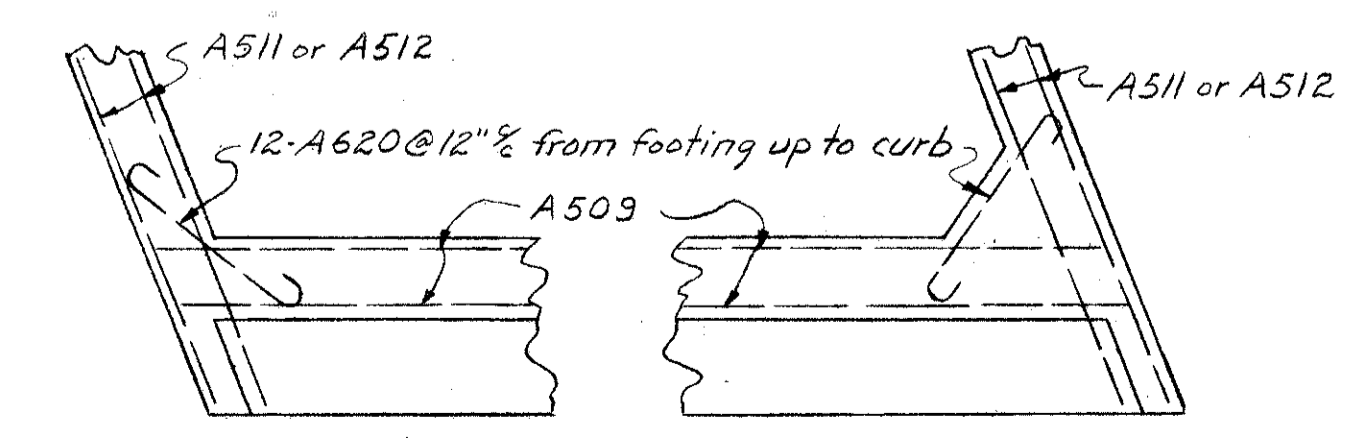
ELEVATION - ABUTMENT NO. 1



ELEVATION B-B



ELEVATION A-A



PART PLAN
SHOWING CORNER REINFORCING

SEC. C-31A

PREPARED BY
CAPITOL ENGINEERING ASSOCIATES, DILLSBURG, PA.
FOR

STATE OF OHIO
DEPARTMENT OF HIGHWAYS
DIVISION OF DESIGN AND CONSTRUCTION
BUREAU OF BRIDGES

ABUTMENT NO. 1
BRIDGE NO. LAK-1-1050
S.R. 1 UNDER KING MEMORIAL ROAD
LAKE COUNTY

STA. 199 + 91.32

DESIGNED	DRAWN	TRACED	CHECKED	REVISED DATE	REVISED
zfn	zfn		zfk		3-1-60