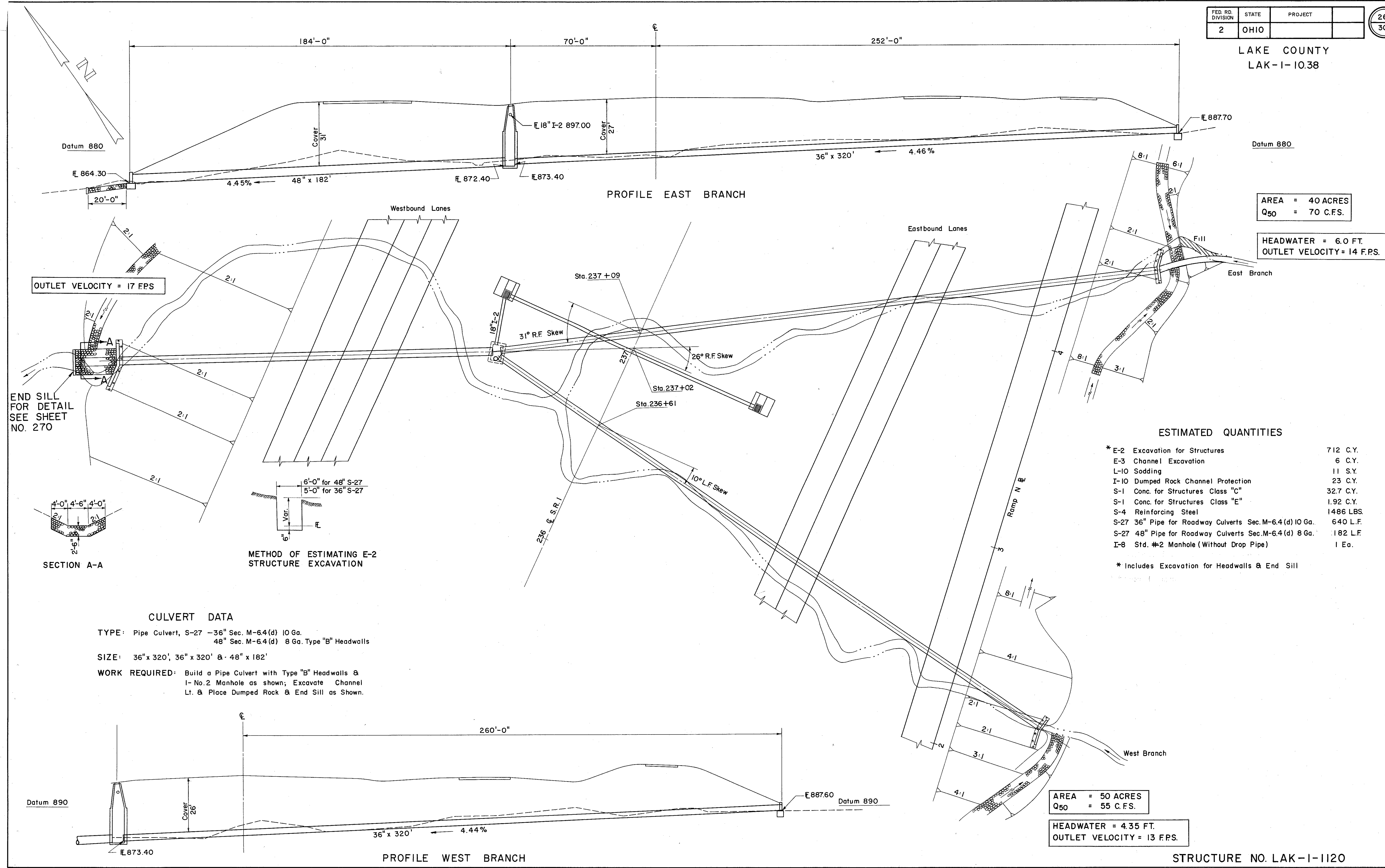


b-1

FED. RD. DIVISION	STATE	PROJECT
2	OHIO	

261
306

LAKE COUNTY
LAK-1-10.38

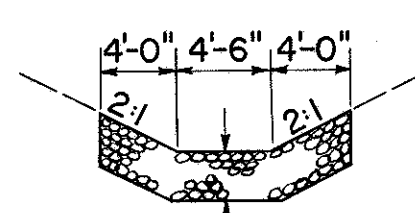


AREA = 40 ACRES
Q₅₀ = 70 C.F.S.

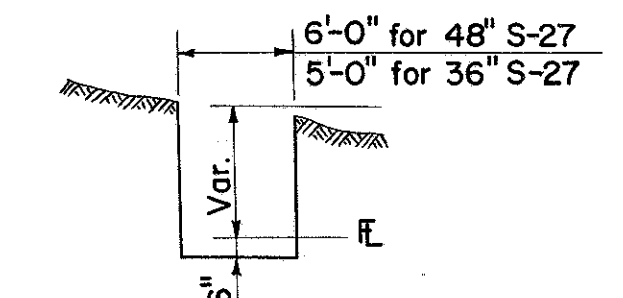
HEADWATER = 6.0 FT.
OUTLET VELOCITY = 14 F.P.S.

OUTLET VELOCITY = 17 FPS

END SILL
FOR DETAIL
SEE SHEET
NO. 270



SECTION A-A



METHOD OF ESTIMATING E-2
STRUCTURE EXCAVATION

ESTIMATED QUANTITIES

* E-2 Excavation for Structures	712 C.Y.
E-3 Channel Excavation	6 C.Y.
L-10 Sodding	11 S.Y.
I-10 Dumped Rock Channel Protection	23 C.Y.
S-1 Conc. for Structures Class "C"	32.7 C.Y.
S-1 Conc. for Structures Class "E"	1.92 C.Y.
S-4 Reinforcing Steel	1486 LBS.
S-27 36" Pipe for Roadway Culverts Sec.M-6.4(d) 10 Ga.	640 L.F.
S-27 48" Pipe for Roadway Culverts Sec.M-6.4(d) 8 Ga.	182 L.F.
I-8 Std. #2 Manhole (Without Drop Pipe)	1 Ea.

* Includes Excavation for Headwalls & End Sill

CULVERT DATA

TYPE: Pipe Culvert, S-27 -36" Sec. M-6.4(d) 10 Ga.
48" Sec. M-6.4(d) 8 Ga. Type "B" Headwalls

SIZE: 36" x 320', 36" x 320' & 48" x 182'

WORK REQUIRED: Build a Pipe Culvert with Type "B" Headwalls & I-No.2 Manhole as shown; Excavate Channel Lt. & Place Dumped Rock & End Sill as Shown.

AREA = 50 ACRES
Q₅₀ = 55 C.F.S.

HEADWATER = 4.35 FT.
OUTLET VELOCITY = 13 F.P.S.

STRUCTURE NO. LAK-1-1120
PIPE CULVERT STA. 237 + 00±