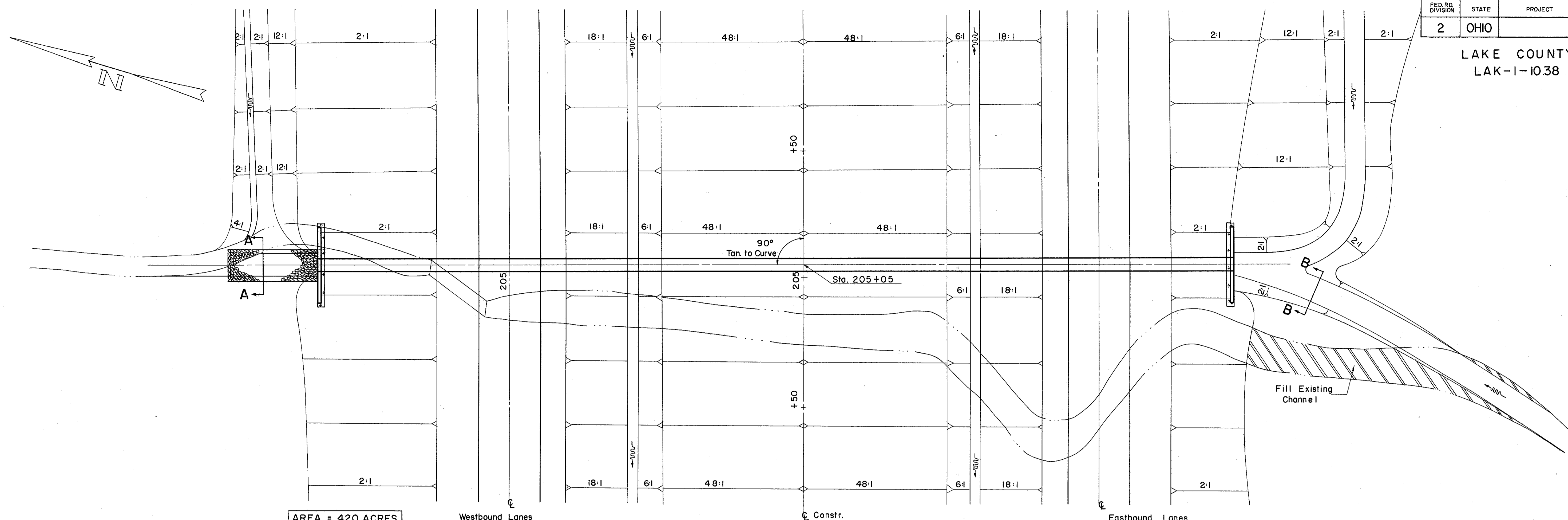
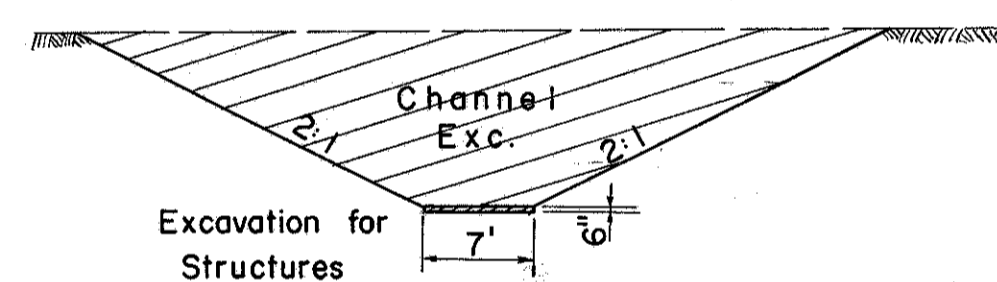


LAKE COUNTY
LAK-1-10.38

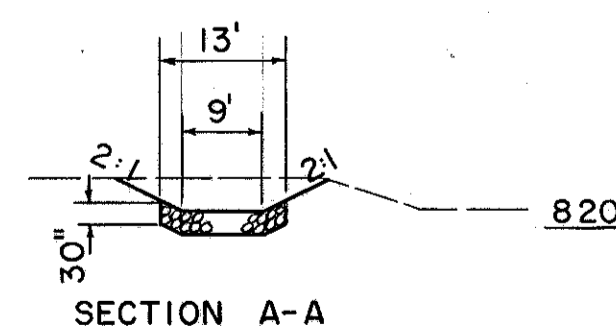
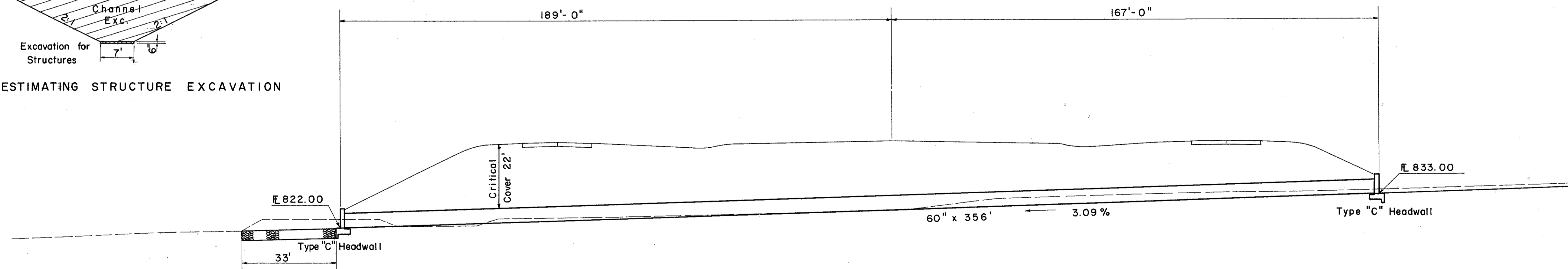


AREA = 420 ACRES
Q₅₀ = 190 C.F.S.

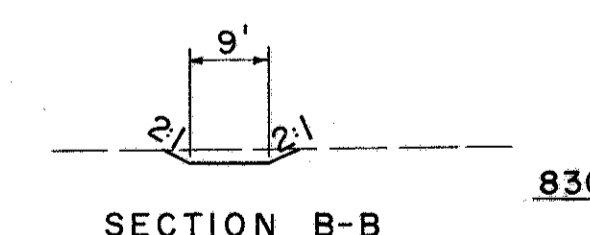
HEADWATER = 7.1 FT
OUTLET VELOCITY = 14.5 F.P.S.



METHOD OF ESTIMATING STRUCTURE EXCAVATION



SECTION A-A



SECTION B-B

CULVERT DATA

SIZE: 60" x 356'
WORK REQ'D.: Build a Pipe Culvert with Std. Type "C" Headwalls. Exc. Channel & Sod Lt. & Rt. Place Dumped Rock Lt. as shown.

ESTIMATED QUANTITIES

E-2	Excavation For Structures	100 C.Y. *
E-3	Channel Excavation	210 C.Y.
L-10	Sodding	12 S.Y.
S-1	Concrete for Structures Class "C"	44 C.Y.
S-4	Reinforcing Steel	1954 Lbs.
S-28	Sec. Cor. Met. Structure, Sec. M-6.4 (g) 10-10 Ga.	356 L.F.
I-10	Dumped Rock Channel Protection	40 C.Y.

*Includes Headwall Excavation

STRUCTURE NO. LAK-1-1060

PIPE CULVERT STA. 205+05