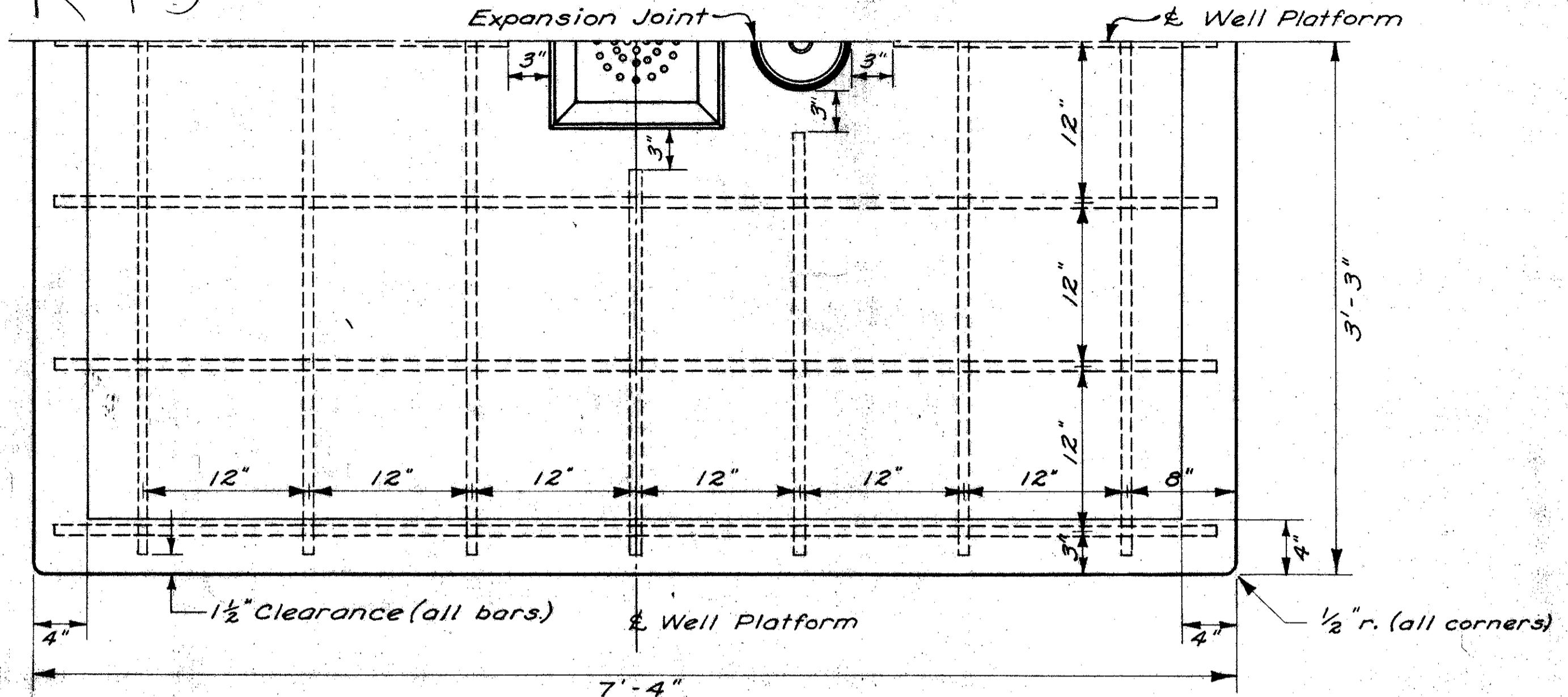


K 13

FED. RD. DIVISION	STATE	PROJECT
2	OHIO	

257-A  
506

LAKE COUNTY  
LAK - 1-10.38



**PLATFORM**  
HALF-PLAN VIEW

**BILL OF MATERIALS\***

- 1 Hand Drinking Fountain Type Pump (Including pump cylinder.)
- 1 Cu. Yd. Class "C" Concrete Aggregate (shall conform to I-22 Grading "C" or "D")
- 1 12"x12"x6" Cast Iron Drain

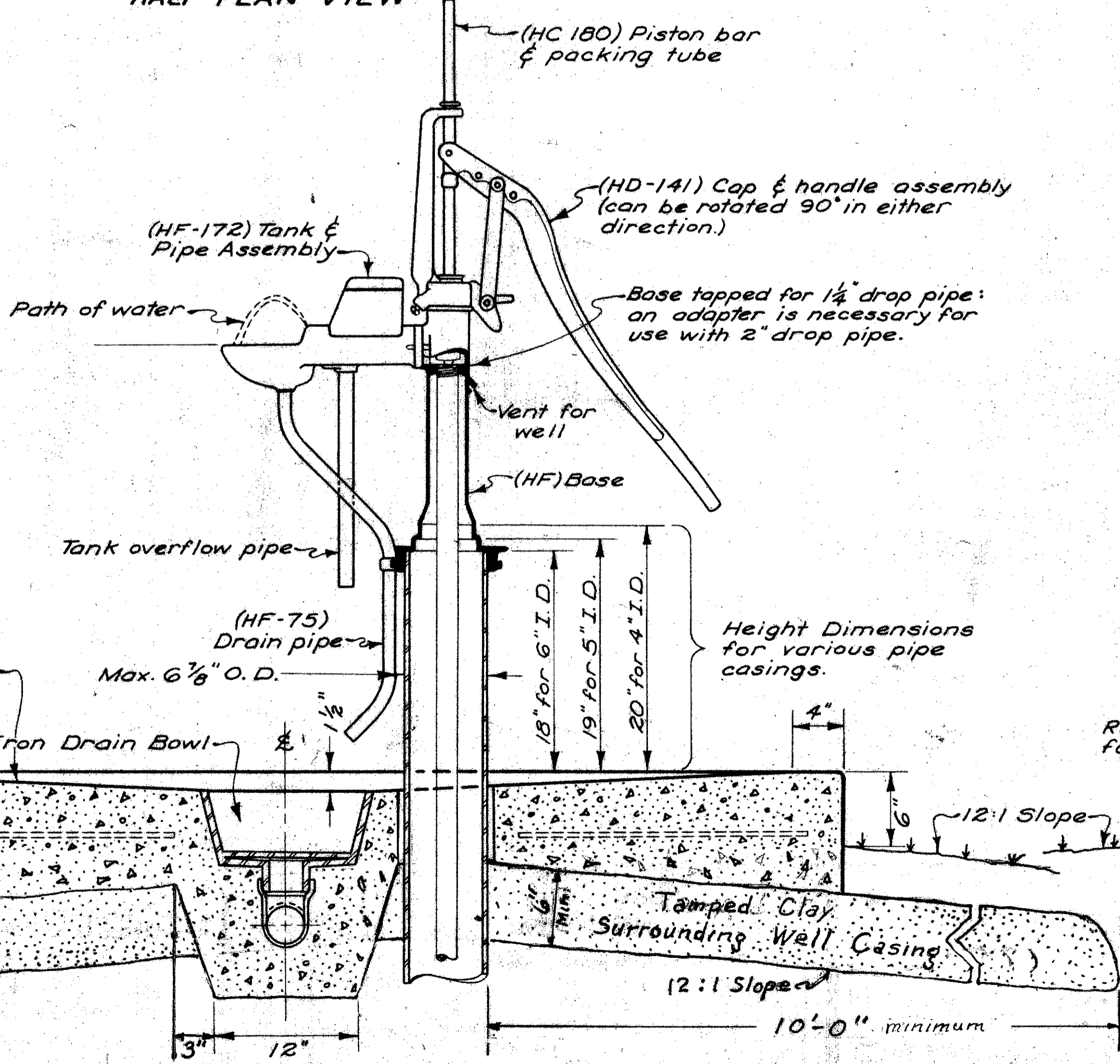
3/4" φ REINFORCING STEEL	
QUANTITY	LENGTH
1	2'-0"
1	2'-9"
2	2'-4"
2	2'-7"
5	6'-3"
6	7'-1"

\* Payment included in Unit Price Bid for "Item Special Well Shelter."

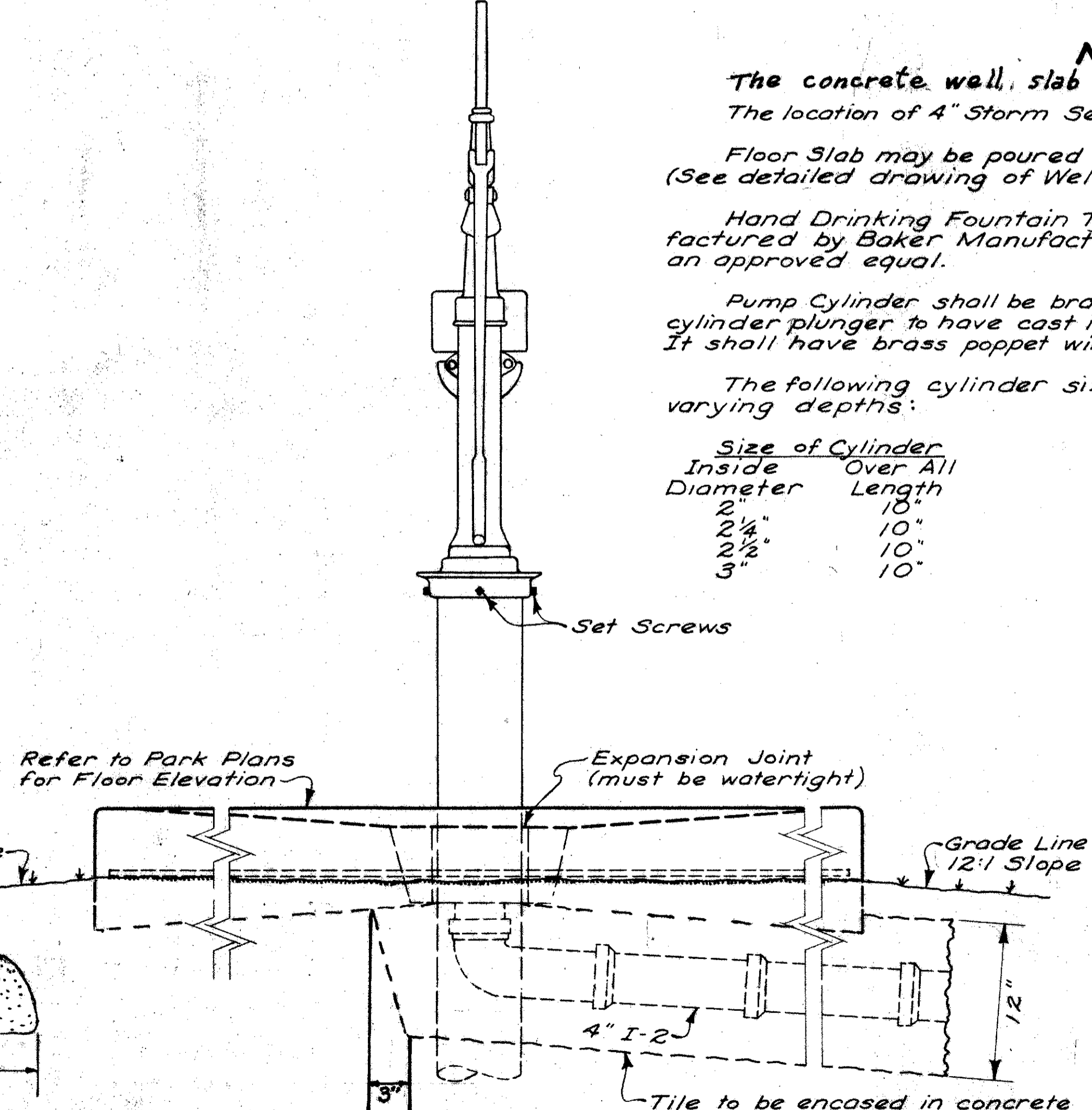
**NOTES**

- The concrete well slab shall have a minimum thickness of 6 inches.
- The location of 4" Storm Sewer shall be furnished on Rest Area plan.
- Floor Slab may be poured integral with the Well Shelter Footer. (See detailed drawing of Well Shelter.)
- Hand Drinking Fountain Type Pump shall be Model 1-HF as manufactured by Baker Manufacturing Company, Evansville, Wisconsin, or an approved equal.
- Pump Cylinder shall be brass body cylinder or brass lined. The cylinder plunger to have cast iron cage, brass follower and valve seat. It shall have brass poppet wing valve with rubber facing and steel stem.
- The following cylinder sizes are recommended for wells of varying depths:

Size of Cylinder		Maximum Depth of Setting Recommended for Size of Cylinder
Inside Diameter	Over All Length	
2"	18"	200'
2 1/4"	10"	175'
2 1/2"	10"	150'
3"	10"	75'



**PUMP & PLATFORM**  
SIDE ELEVATION



**PUMP & PLATFORM**  
REAR ELEVATION

